

Project MOVER E-bikeshare

Village of Croton-on-Hudson, New York



Shared Mobility Inc.

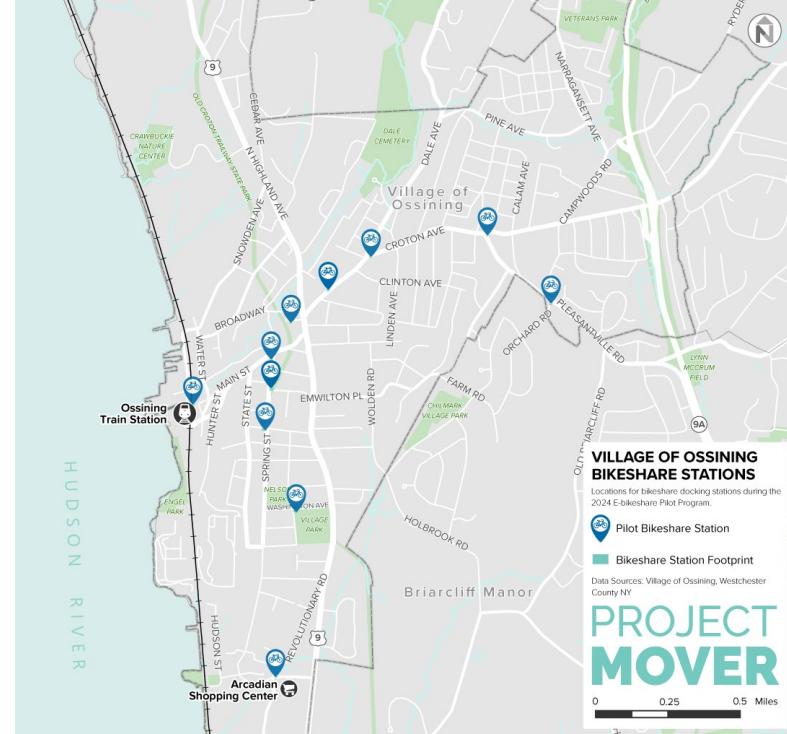
Agenda

- Overview of Ossining Pilot
- Overview of Proposed Locations
- Q&A



Ossining E-bikeshare Pilot

- Launched August 26, ended December 9
- 50 e-bikes
- 11 station locations
- Operational hub in Ossining
- Pilot pricing was pay-as-you go
 - \$1 to unlock and \$0.12 per minute of use



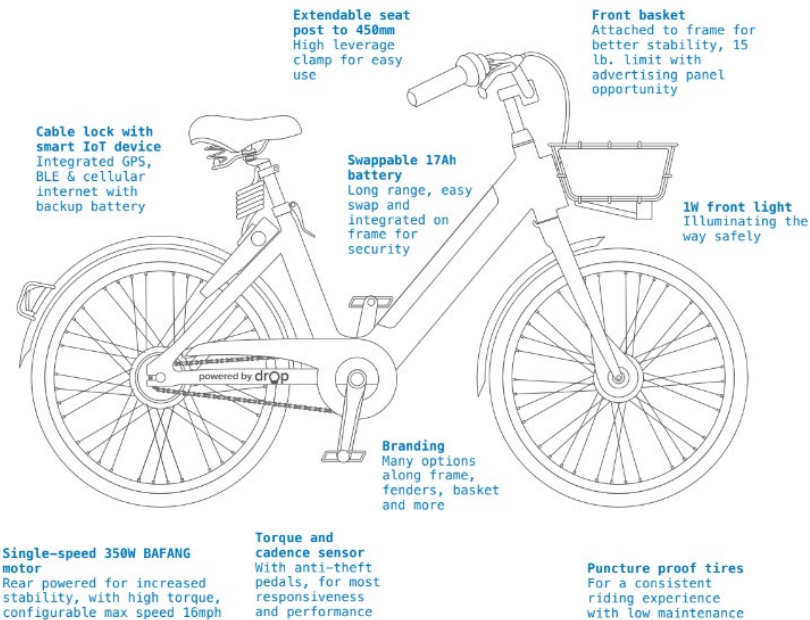
Ossining E-bikeshare Pilot

Total Trips	1,459
Total Miles Traveled	1,983 miles
Total Minutes Traveled	27,545 minutes
Average Miles per Trip	1.36 miles
Satisfaction Rate (½ Stars or more)	94.32%
Top 3 Destinations	Nelson Park, Metro North Plaza, Arcadian Shopping Center



About the Bike

Manufacturer	Drop Mobility
Charging Method	Staff swaps with batteries charged in Ossining
Features	Front basket, fenders, cable lock, bell, lights
Power	350 watts
Range	30-40 miles



Shared Mobility Inc.

Engagement

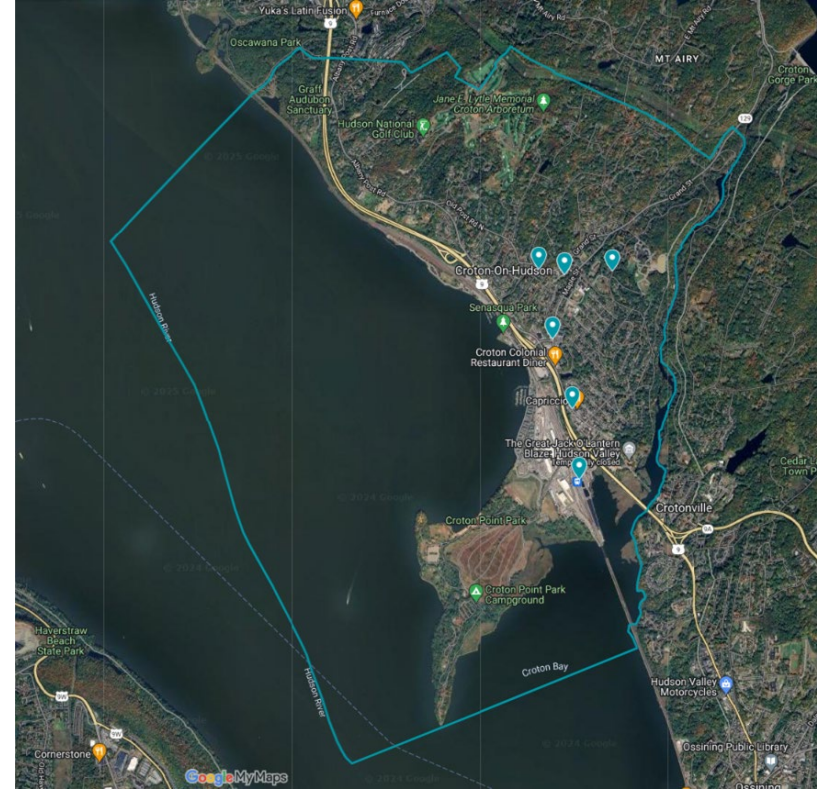
- SMI Staff has met with Deputy Mayor Len Simon and Assistant Village Manager Emily Mancini
 - This included an e-bike ride site visit to discuss potential sites
- SMI Staff attended Sustainability and Bike & Pedestrian Committee meetings



Proposed Sites

End Goal: 6-8 Hubs

- Metro North Station
- S. Riverside Ave (near Capriccio)
- Maple Commons/Pocket Park
- Croton Free Library
- Vasallo Park
- Village Hall



Shared Mobility Inc.

Croton Harmon Station

Purpose

- Integrate the system with regional transportation solutions

Proposed Siting Location

- Sidewalk pad on village-owned sidewalk



S. Riverside Ave

Purpose

- Connect users to a vibrant business district

Proposed Siting Location

- TBD - options in on-street daylighting spaces near Capriccio



Maple Commons/Pocket Park

Purpose

- Reduce need for vehicle miles traveled for dense housing residents/connect to bus services

Proposed Siting Location

- The pocket park or a parking space in the commons - SMI would need the village to initiate the conversation.



Shared Mobility Inc.

Croton Free Library

Purpose

- Connect users to library/educational resources

Proposed Siting Location

- TBD - SMI would need the village to initiate a conversation with CFL on their preference



Shared Mobility Inc.

Vasallo Park

Purpose

- Connect users to a vibrant node and a community park

Proposed Siting Location

- Utilize a municipal parking spot



Village Hall

Purpose

- Connect residents to municipal services

Proposed Siting Location

- TBD - would require repurposing a parking spot

