

Cortlandt Waterfront Park

Cortlandt, New York

IQ



Cortlandt Waterfront Park
Verplanck, New York
Preliminary Master Plan
January 2015

IQ Landscape Architects prepared a park master plan for a 50 acre waterfront parcel located in the Town of Cortlandt, New York. The plan has been developed through an extensive public outreach process which has engaged a diverse group of stakeholders including business owners, local fisherman, school groups and environmentalists. The park has a unique and colorful history, once the site of extensive brick making operations as well as a seaplane base.

The western portion of the site is programmed for various activities oriented towards the Hudson River. The eastern section contains a nature preserve and interpretive areas centered on brick making in the Hudson Valley. The park most recently won a Planning Achievement Award from the Westchester Municipal Planning Federation.

Harbor Island Park

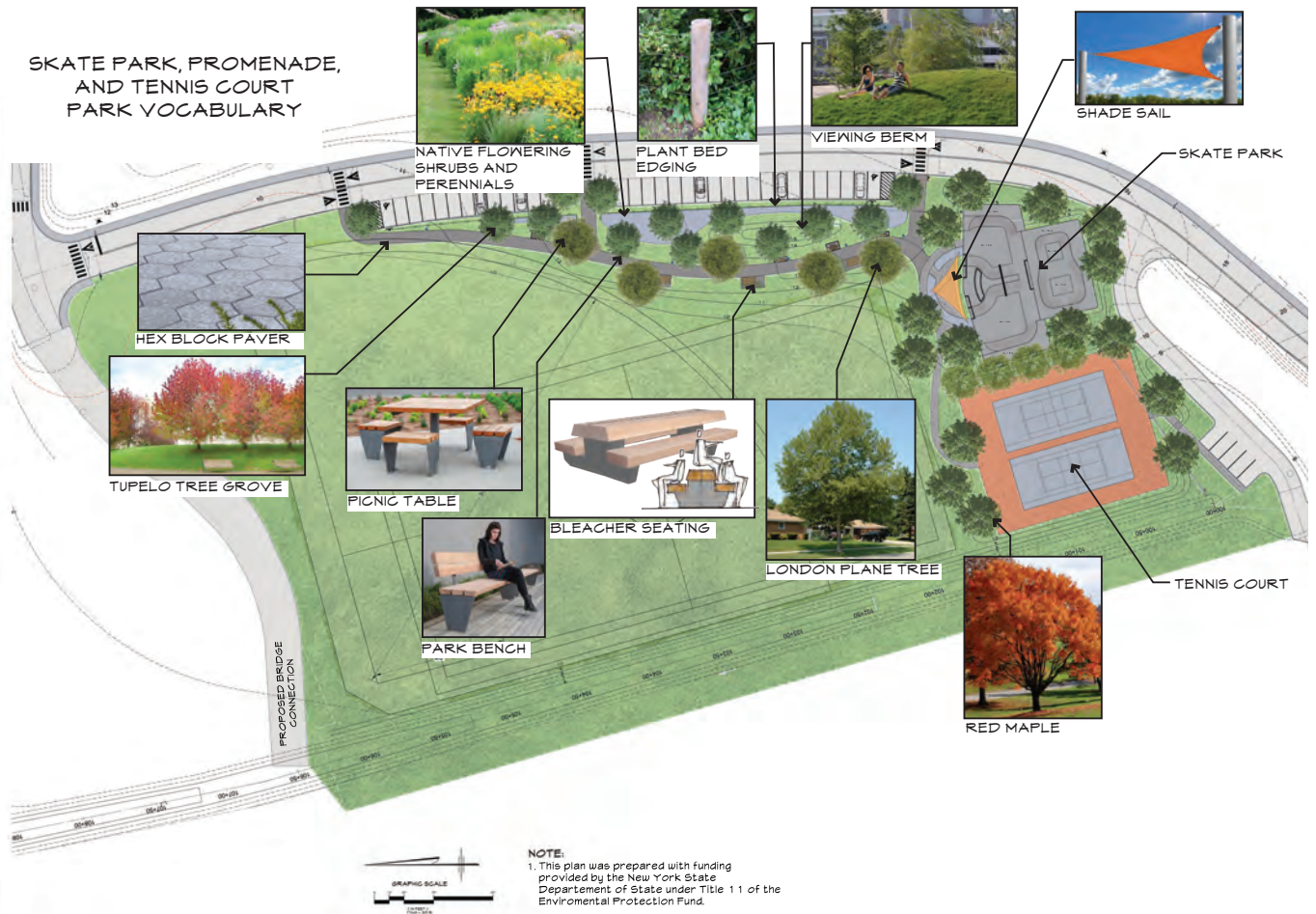
Town of Mamaroneck, New York



IQ Landscape Architects was selected as part of a Project Team for the Village of Mamaroneck to plan and redesign a major park facility located on the Long Island Sound. The park has one of the most unique settings on the East Coast, as it sits at the terminus of a bustling main street and central business district. The surrounding inlets create a thriving harbor-town atmosphere. Public outreach was a major component of the planning and design work. In addition to providing recreational opportunities and preserving the maritime character, technical issues such as storm drainage and seawall restoration were investigated.

East Parcel Community Park

Sleepy Hollow, New York



IQ is part of a design-build team composed of professional consultants and contractors responsible for the design and construction of a new park in Sleepy Hollow New York. The park is adjacent to the Hudson River and sits across from a new planned Village Community Center and DPW Facility. The program for the park consists of a skatepark, racquet sport courts, and a promenade overlooking future athletic fields.

Flint Park

Larchmont, New York



Site Plan

IQ worked with the Village of Larchmont and the Flint Park Conservancy to prepare a Conceptual Layout, conduct field investigations, and product selection for the front area of Flint Park. The project scope included the removal and replacement of the existing playground, improvements to site drainage, the restoration and replacement of the ball fields and basketball court, and the design of new bleachers.



View of New Fields and Creek Restoration

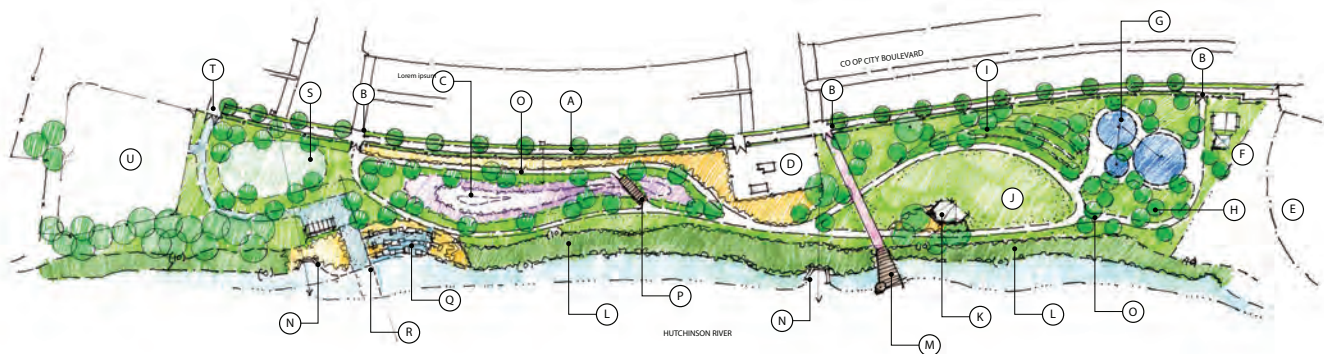
Flint Park
Larchmont, New York

IQ



Riverbay Park

Bronx, New York



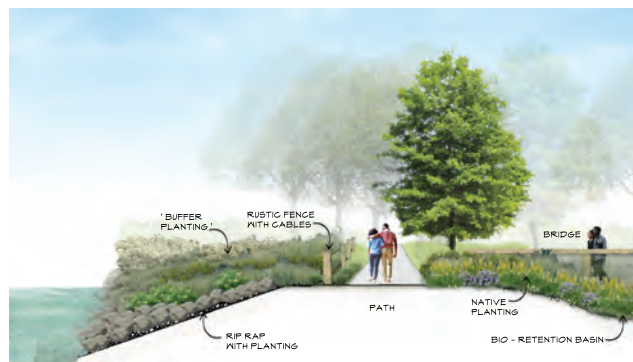
KEY

- | | | |
|---|--------------------------------|--|
| (A) STREETSCAPE / SIDEWALK IMPROVEMENTS / FENCE | (H) PICNIC AREA | (O) PARK PATH (8'-12' WIDE) CABLE BARRIER ALONG WATER'S EDGE |
| (B) PARK ENTRANCE | (I) BERMED AMPHITHEATER | (P) PEDESTRIAN BRIDGE |
| (C) BIO-RETENTION / WET MEADOW | (J) OPEN LAWN | (Q) STONE STEP DOWN |
| (D) CON ED SUBSTATION | (K) STAGE / PAVILION | (R) KAYAK LAUNCH WITH STORAGE RACKS |
| (E) NEW YORK CITY BALLFIELD | (L) EMBANKMENT / RESTORATION | (S) ADULT EXERCISE |
| (F) STORAGE BUILDING | (M) OVERLOOK DECK / BIRD WATCH | (T) SERVICE ROAD |
| (G) PLAYGROUND | (N) OUTFLOW | (U) STAGING AREA, PARKING, DOG RUN, FUTURE SPORTS COURTS |



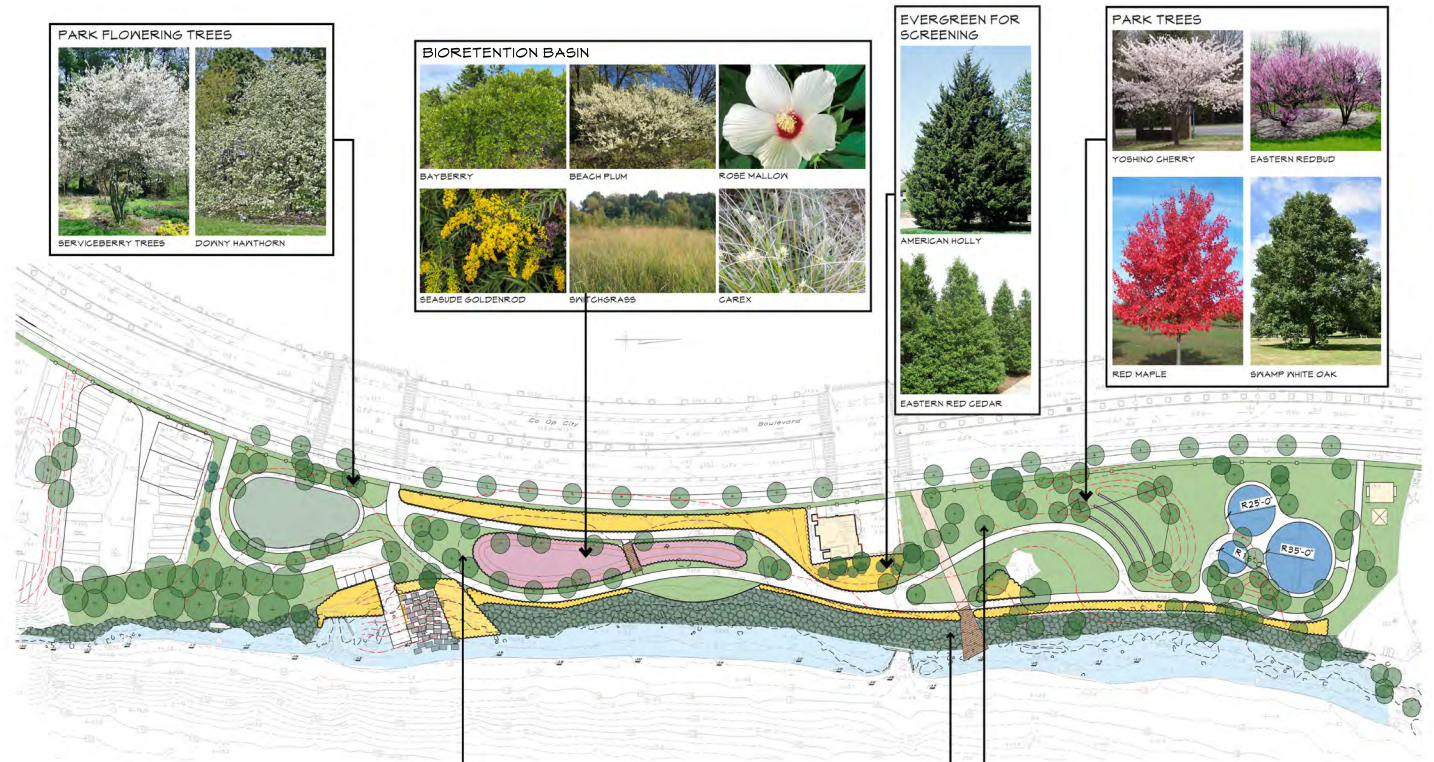
RIVERBAY WATERFRONT PARK

OCTOBER 14, 2021

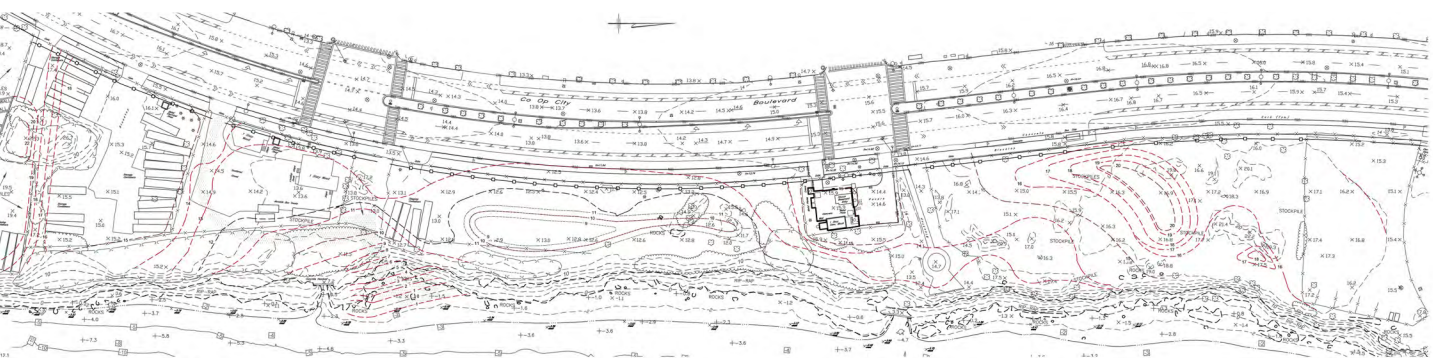


IQ Landscape Architects is working with the Riverbay Corporation to provide landscape architectural design services for improvements to a waterfront parcel along the Hutchinson River at Co-op City. IQ is preparing a schematic open space design plan which addresses the proposed park programmatic elements including playgrounds, trailways, sport courts, performance spaces, fencing and other outdoor amenity spaces. IQ will also develop concepts (with McClaren Engineering) for shoreline restoration incorporating a combination of natural stone element and a vegetative edge. In addition, IQ will develop schematic concepts for the streetscape along Co-op City Blvd.

Riverbay Park Bronx, New York



1 SCHEMATIC PLANTING PLAN
1" = 50'



2 SCHEMATIC GRADING PLAN
SCALE 1" = 50'

Pollinator Park

White Plains, New York



Pollinator Gardens

Pollinator Gardens provide energy-rich nectar and protein-rich pollen for native birds, butterflies, bees, and other insects. They also provide a safe habitat which provides nesting materials and resting locations for our residents. In return these animals carry pollen from one flower to another, aiding the plant's reproduction. They also spread of the seeds of the flowers and plants well beyond the original flower.

Almost all of the world's crop species and most native plants rely on these animals for pollination. Habitat loss, diseases, pollution, pesticide poisoning, and invasive plant species, are causing many of these pollinators to disappear, and that has scientist worried.

Benefits of naturalized areas include:

- Climate resiliency: managing the negative effects of flooding;
- Ecological health: maintain a healthy habitat for wildlife
- Mental health: providing a respite for resident and visitors
- Environmental health: the area will improve air and water
- Beautification: significantly enhancing the area for all to enjoy.



IQ Landscape Architects worked with the City of White Plains to restore a 1-acre vacant parcel as a passive public park composed of a native meadow, trees, and perennial gardens. The site was a reclaimed car service center facility. The firm designed interpretative signage, seating areas of respite, and a sustainable porous paving system.

Matthiessen Park

Irvington, New York

IQ



Matthiessen Playground Plan



IQ Landscape Architects worked closely with a citizen's committee to develop a comprehensive Master Plan for Matthiessen Park located on the Hudson River in Irvington, NY. The park is defined by magnificent views, groves of mature oak trees, and a popular playground. The play areas however were constructed over forty years ago and were in need of a major overhaul.

Village officials, the committee, and a team from IQ met regularly to develop a new playground design inspired by nature. Materials, colors, and forms were selected to reinforce the theme. The park and playground areas were redesigned to ensure accessibility for the handicapped. A splash pad, performance stage, and a fitness trail are other park amenities meant to engage the entire Irvington community.

Matthiessen Park

Irvington, New York



Tarrytown Riverwalk Park Landscape Restoration

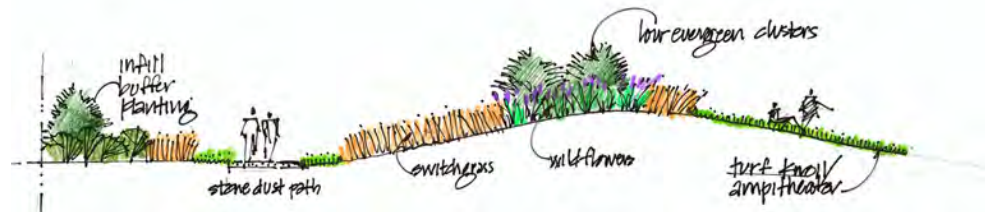
Tarrytown, New York



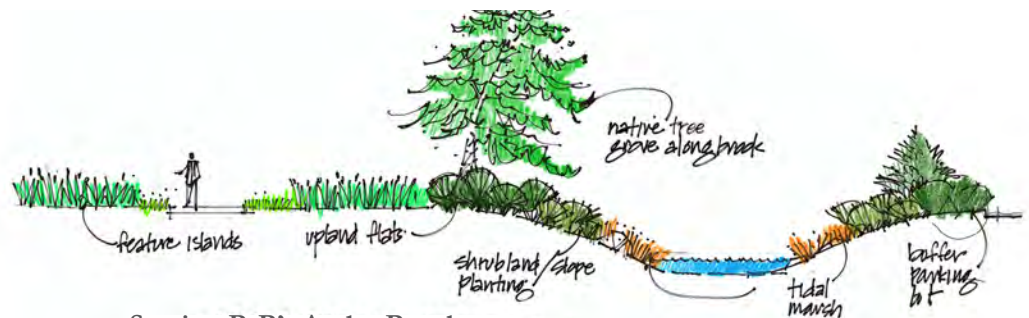
Landscape Restoration Plan



IQ Landscape Architects, along with sub-consultants and native plant specialists Larry Weaner Landscape Associates (LWLA) collaborated on a landscape restoration project known as Scenic Hudson Riverwalk Park at Tarrytown. The new plans for the park incorporated a palette of native trees, shrubs, and meadows. The IQ and LWLA team worked closely with a committee of stakeholders set up by the village to create a new landscape plan which promotes sustainable design and management practices.



Section A-A' - Rolling Dunescape



Section B-B' - Andre Brook

Tarrytown Riverwalk Park Landscape Restoration

Tarrytown, New York

IQ



Yorktown Railroad Park

Yorktown, New York

IQ



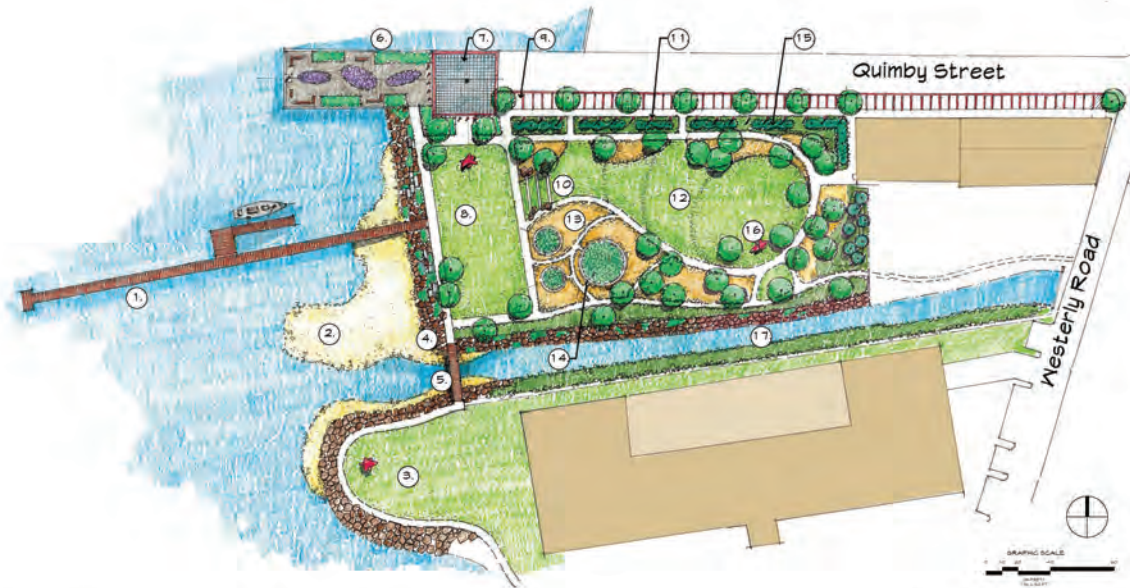
From the turn of the century the Old Putnam Railroad Line carried passengers and produce into New York City from the outer suburbs and surrounding farmland. Although the line was abandoned over forty years ago, many of the train stations remain and the once vacant right-of-ways are being reclaimed as greenways and bike trails.

The Town of Yorktown retained IQ to develop plans for a park with one such historic station structure as its focal point. The former station will be programmed as a cafe intended to serve the many recreational bikers anticipated along the North County Trail bikeway system. The restored building will be flanked by a new restroom facility and bicycle rental pavilion which will recall the architectural heritage of Westchester County's train stations.

A terrace, beer garden, and picnic grove will provide an outdoor retreat and rest stop along the bikeway and draw travelers into the nearby shops and commercial district of the Hamlet of Yorktown Heights. Spatially defined by berms, flowering trees, and a crescent shaped mall, open lawns will become areas for a farmers' market, art shows and outdoor fairs. Inlaid with fabricated scrolls of characters and symbols reflecting Yorktown's history, period lighting fixtures, benches, and archway portals, will create gateways into this new village green.

Oil Tank Park

Ossining, New York



- | | | | |
|---|---|--|----------------------------------|
| ① Existing Pier | ⑥ Reclaim Road Extension as Overlook and Fishing Pier | ⑪ Banners | ⑮ Tree Buffer to Screen Boatyard |
| ② Tidal Marsh Restoration | ⑦ Vehicular turn-a-round / Park Gateway | ⑫ Upper Lawn | ⑯ Outdoor Art |
| ③ Henry Gourdine Park | ⑧ Festival Lawn | ⑬ Native Wildflower Meadow | ⑰ Sing Sing Kill |
| ④ Rip-rap Shoreline with Native Plantings | ⑨ Parking for Cars and Food Trucks | ⑭ Park Features within Footprints of Removed Tanks | |
| ⑤ Pedestrian Bridge | ⑩ Lawn Steps | • Amphitheater | |
| | | • Stage | |
| | | • Gardens | |

Waterfront Park: Conceptual Plan
Ossining, New York

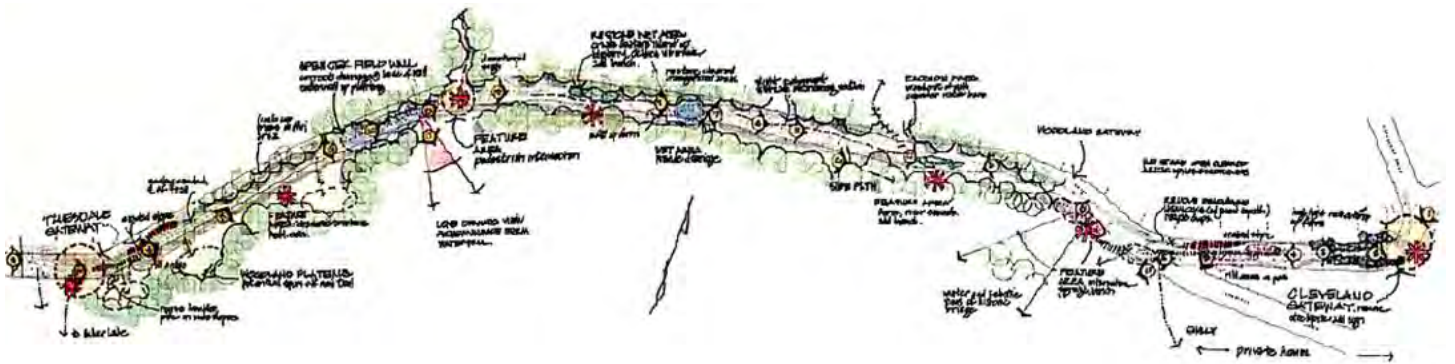
IQ
Integrative Quality
Landscape Architects, P.C.
111 West Street, 2nd Fl.
New York, NY 10038
Tel: 212.279.2200



IQ prepared Conceptual Plans for a three-acre site on the Hudson River which contained several decommissioned oil tanks. The proposed design retains three of the tanks adaptively revising the roofs as migrating pollinator habitats. Swaths of lawn are carved throughout the park and through new fields of native meadows. An existing bulkhead along the river's edge will be replaced with planted rip rap and stone step-downs to the water. A small sand bar located at the mouth of the Sing-Sing Kill will be restored as a tidal marsh.

Croton Gorge Trails

Croton on Hudson, New York



The Village of Croton-on-Hudson received an ISTEA grant from the New York State Department of Transportation for the development of a municipal trail.

The trail is located within a paper street R.O.W. section which parallels the Croton Gorge, a scenic and heavily wooded area geologically created by the Croton River. The trail section is part of an overall contiguous Village-wide pedestrian network, linking neighborhoods with natural preserves, public open spaces, and the Hudson River waterfront. IQ developed the conceptual design and construction documentation for this first phase. Erosion control and stabilization were a major focus of the design. The trail retains a very natural, rustic feel and a “soft” bio-engineered approach was applied to some of the technical issues addressed.

Local historic, land use and natural features were highlighted with interpretive signage. Native under story plantings were added to enhance wetland and disturbed areas while recycled wood chips were utilized from dying and dead hemlocks to help stabilize and define the trail.

Croton Waterfront Trail and Boat Launch

Croton-on-Hudson, New York



IQ Landscape Architects designed a series of projects for the Village Croton-on-Hudson to further promote accessibility of its Hudson River waterfront. The projects included a canoe/kayak launch located at the terminus of the Metro-North parking lot, two handicapped-accessible trails, and a bikeway system.