

# TEMPLE ISRAEL OF NORTHERN WESTCHESTER

## ADDITIONS & ALTERATIONS

31 Glengary Road  
Croton-On-Hudson, NY 10520

## SITE PLAN APPLICATION

January 21, 2026



### DRAWING LIST

GENERAL	
G000	COVER SHEET
ARCHITECTURAL	
A100	SITE PLANS
A101	DEMOLITION PLAN
A201	OVERALL FIRST FLOOR PLAN
A300	EXISTING CONDITIONS
A301	EXTERIOR ELEVATIONS
Sheet total: 6	

ADDITIONS &  
ALTERATIONS

Temple Israel of  
Northern Westchester

31 Glengary Road, Croton-On-Hudson, NY 10520



**KG+D Architects, PC**  
285 Main Street, Mount Kisco, NY 10549  
914.666.5900 kgdarchitects.com

STRUCTURAL ENGINEER  
**The DiSalvo Engineering Group**  
93 Lake Ave Ste 201, Danbury, CT 06810  
203.490.4140

MEP ENGINEER  
**OLA Consulting Engineers**  
50 Broadway Ste 2, Hawthorne, NY 10532  
914.747.2800

SCHEMATIC DESIGN

KG+D PROJECT No.  
2025-1039

SHEET No.

**G000**

**ADDITIONS & ALTERATIONS**

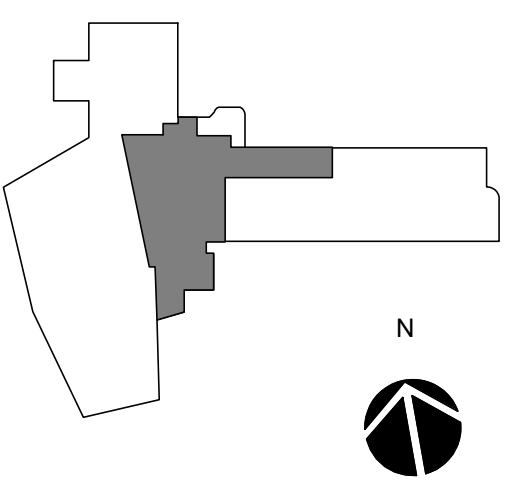
**TEMPLE ISRAEL OF NORTHERN WESTCHESTER**

31 Glengary Road  
Croton-On-Hudson, NY, 10520



**KG+D Architects, PC**  
285 Main Street, Mount Kisco, NY 10549  
914.666.5900 kgdarchitects.com

KEY PLAN



NOTE: ALL IDEAS, DESIGNS, ARRANGEMENTS AND PLANS INDICATED OR REPRESENTED BY THIS DRAWING ARE OWNED BY AND ARE THE PROPERTY OF KG+D ARCHITECTS, PC (KG+D), AND WERE CREATED FOR USE ON THIS PROJECT. NONE OF SUCH IDEAS, DESIGNS, ARRANGEMENTS OR PLANS SHALL BE USED BY OR DISCLOSED TO ANY PURPOSE WHATSOEVER WITHOUT THE WRITTEN PERMISSION OF KG+D.

WRITTEN DIMENSIONS ON THIS DRAWING SHALL HAVE PRECEDENCE OVER SCALED DIMENSIONS. CONTRACTOR SHALL VERIFY ALL ACTUAL DIMENSIONS AND CONDITIONS ON THE JOB AND THE ARCHITECT MUST BE NOTIFIED OF ANY VARIATIONS FROM DIMENSIONS AND CONDITIONS SHOWN. SHOP DETAILS MUST BE SUBMITTED TO THIS OFFICE FOR APPROVAL BEFORE PROCEEDING WITH FABRICATION.

ALTERATIONS BY ANY PERSON IN ANY WAY OF ANY ITEM CONTAINED ON THIS DOCUMENT, UNLESS ACTING UNDER THE DIRECTION OF THE LICENSED ARCHITECT WHOSE PROFESSIONAL SEAL IS AFFIXED HERETO, IS A VIOLATION OF TITLE 16, SECT. 89.9 (b) OF NEW YORK STATE LAW.

© COPYRIGHT KG+D ARCHITECTS, PC. ALL RIGHTS RESERVED.

PROFESSIONAL SEAL

DATE: XX/XX/XXXX

SCHEMATIC DESIGN

REVISION  
01/21/2026 SITE PLAN APPLICATION

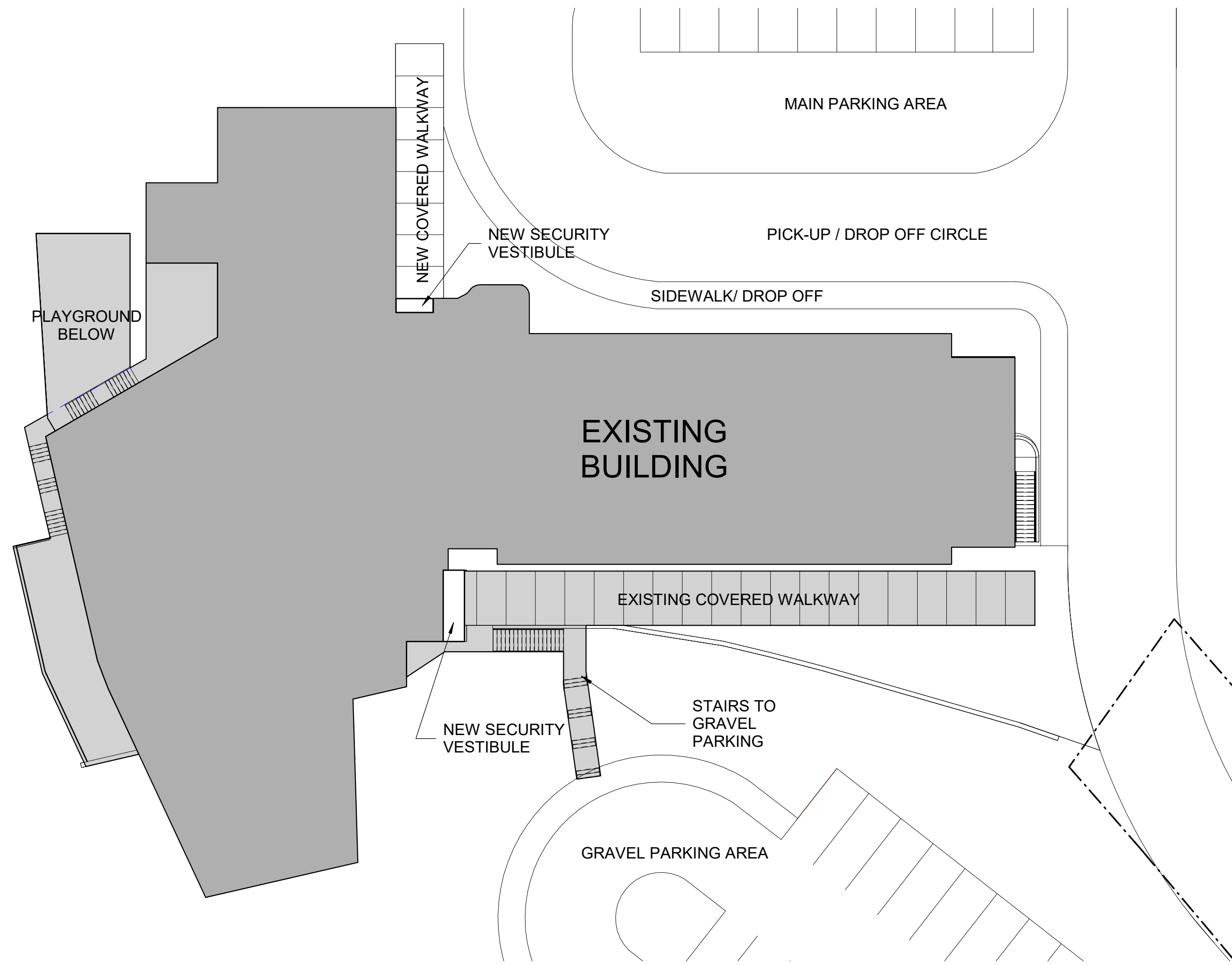
KG+D PROJECT No.  
2025-1039

SHEET TITLE

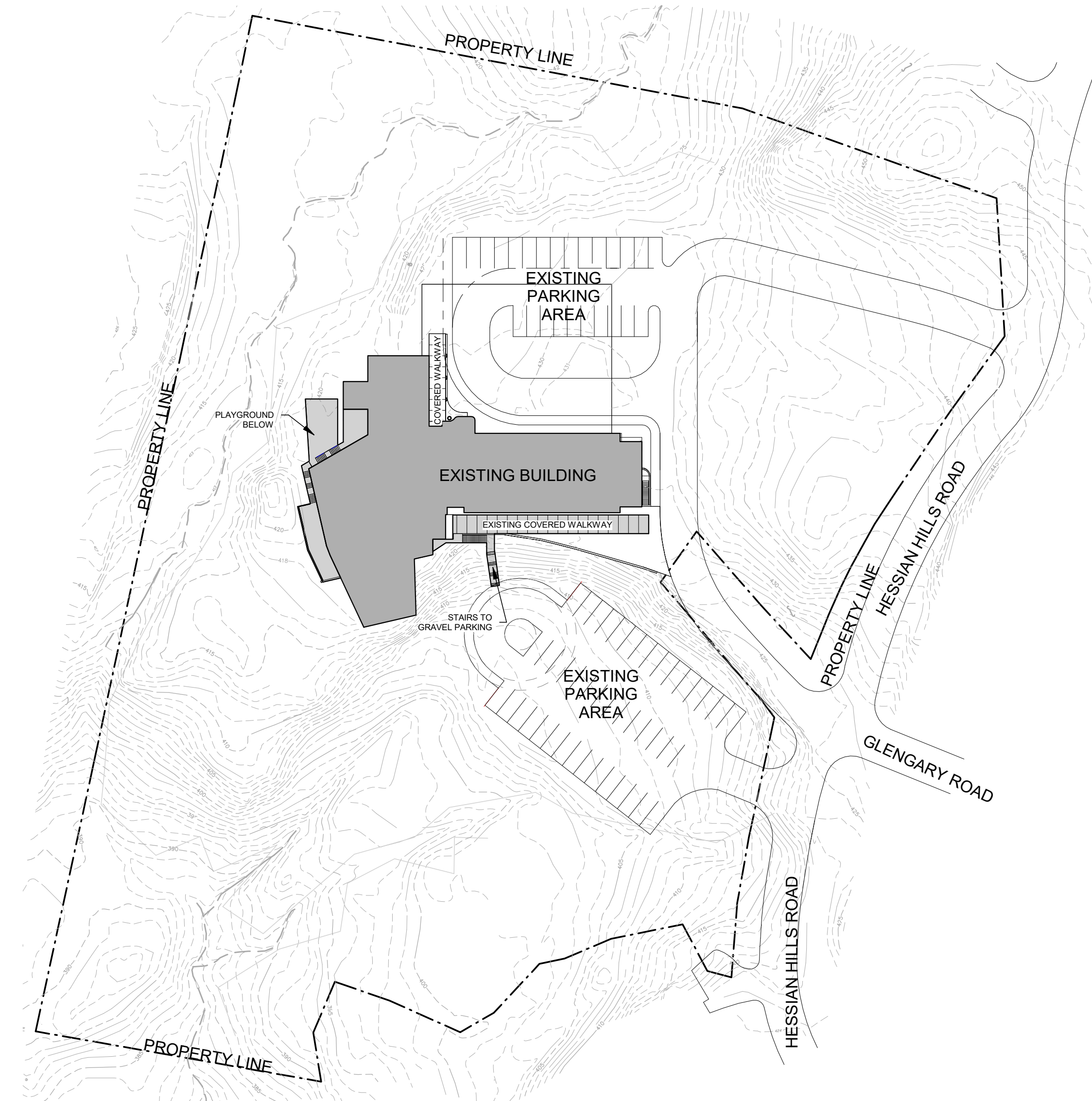
**SITE PLANS**

SHEET No.

**A100**



**2** PARTIAL SITE PLAN  
1" = 20'-0"



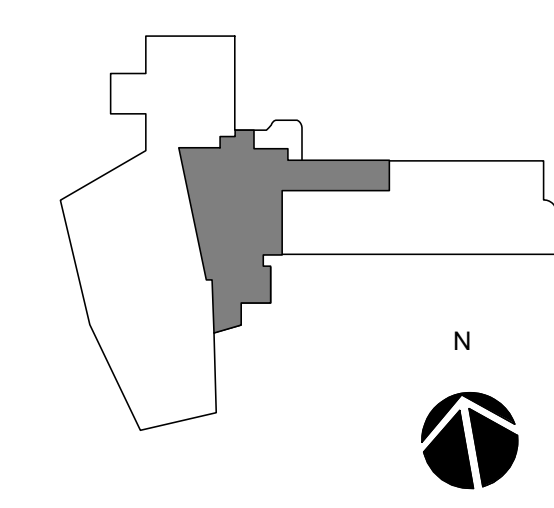
**1** OVERALL SITE PLAN  
1" = 60'-0"



**ADDITIONS & ALTERATIONS**  
**TEMPLE ISRAEL OF NORTHERN WESTCHESTER**  
 31 Glengary Road  
 Croton-On-Hudson, NY, 10520

**KG+D**  
**KG+D Architects, PC**  
 285 Main Street, Mount Kisco, NY 10549  
 914.666.5900 kgdarchitects.com

KEY PLAN



NOTE: ALL IDEAS, DESIGNS, ARRANGEMENTS AND PLANS INDICATED OR REPRESENTED BY THIS DRAWING ARE OWNED BY AND ARE THE PROPERTY OF KG+D ARCHITECTS, PC (KG+D), AND WERE CREATED FOR USE ON THIS PROJECT. NONE OF SUCH IDEAS, DESIGNS, ARRANGEMENTS OR PLANS SHALL BE USED BY OR DISCLOSED TO ANY PURPOSE WHATSOEVER WITHOUT THE WRITTEN PERMISSION OF KG+D.

WRITTEN DIMENSIONS ON THIS DRAWING SHALL HAVE PRECEDENCE OVER SCALED DIMENSIONS. CONTRACTOR SHALL VERIFY ALL ACTUAL DIMENSIONS AND CONDITIONS ON THE JOB AND THE ARCHITECT MUST BE NOTIFIED OF ANY VARIATIONS FROM DIMENSIONS AND CONDITIONS SHOWN. SHOP DETAILS MUST BE SUBMITTED TO THIS OFFICE FOR APPROVAL BEFORE PROCEEDINGS WITH FABRICATION.

ALTERATIONS BY ANY PERSON IN ANY WAY OF ANY ITEM CONTAINED ON THIS DOCUMENT, UNLESS ACTING UNDER THE DIRECTION OF THE LICENSED ARCHITECT WHOSE PROFESSIONAL SEAL IS AFFIXED HERETO, IS A VIOLATION OF TITLE 16, SECT. 69.2 (b) OF NEW YORK STATE LAW.

© COPYRIGHT KG+D ARCHITECTS, PC. ALL RIGHTS RESERVED.

PROFESSIONAL SEAL

DATE: 01/08/26  
 SCHEMATIC DESIGN  
 REVISION  
 01/21/2026 SITE PLAN APPLICATION

KG+D PROJECT No.  
 2025-1039  
 SHEET TITLE

**EXISTING CONDITIONS**

SHEET No.  
**A300**



VIEW OF EXISTING SOUTH ENTRANCE



VIEW OF EXISTING NORTH ENTRANCE  
 (CLOSE UP)



VIEW OF EXISTING NORTH ENTRANCE

