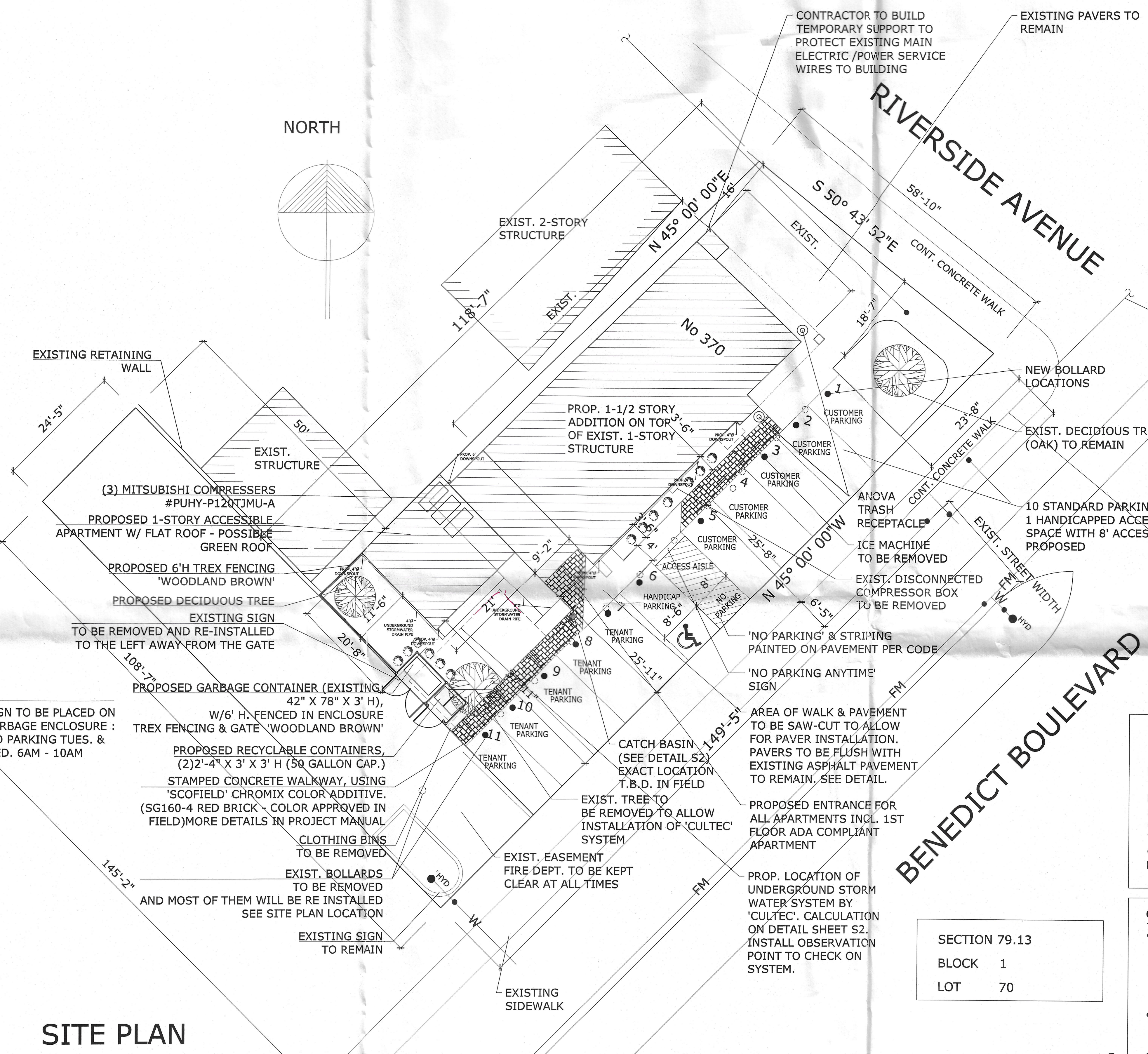
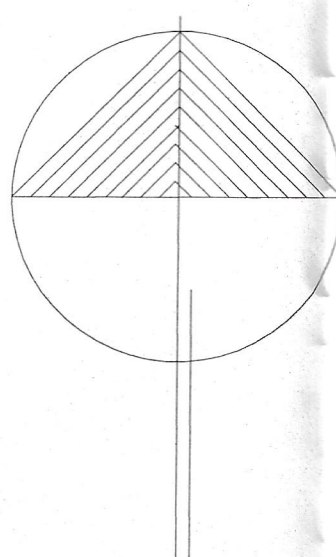


SITE PLAN

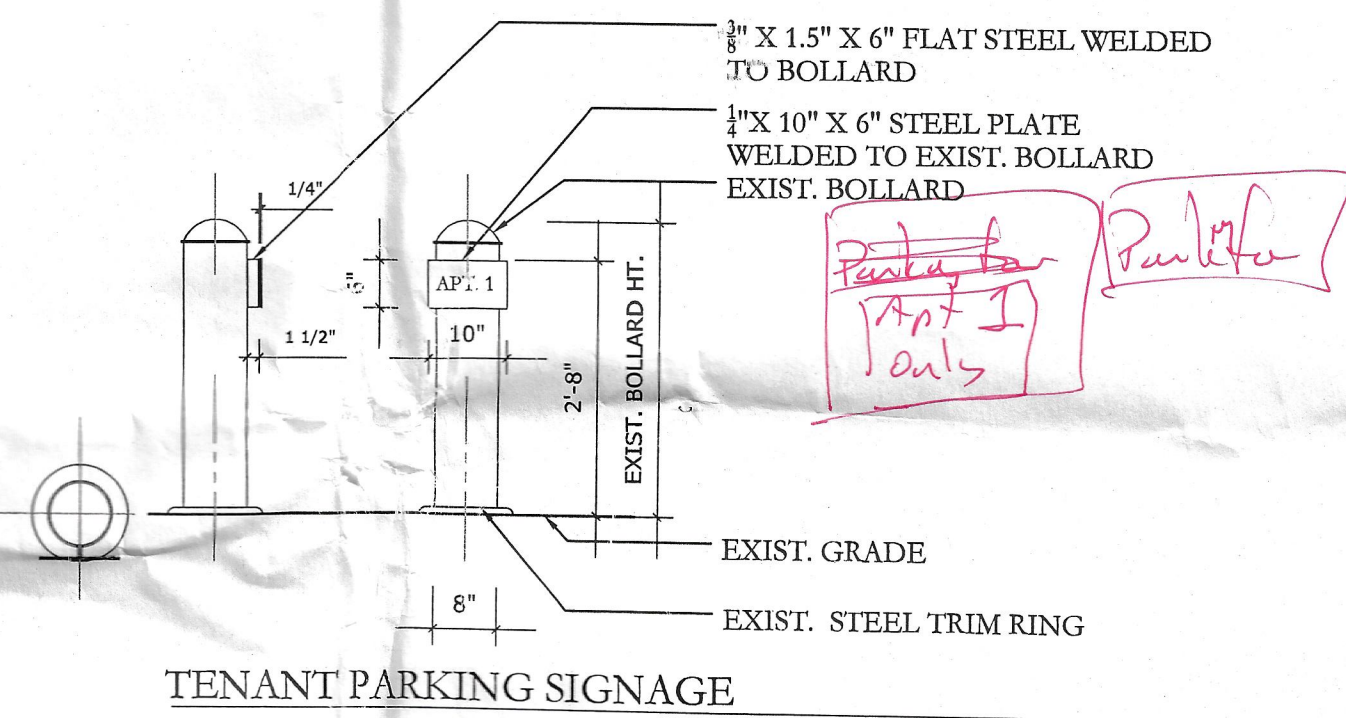
SCALE: 3/32" = 1'-0"

NORTH



EXTERIOR LIGHTING SCHEDULE			
RAB & NANOLED LIGHTING - LIGHT FIXTURE SPECS AVAILABLE UPON REQUEST AND PART OF THE PROJECT MANUAL			
LIGHT FIXTURE TYPE	LED WALL SCONCE	LED ANGLED CONE GOOSENECK	WALLPACK 50W LED AREA LIGHT
MODEL #:	NANOLED LNRP3	GN1LED13NAC11B	WPLED 2 T50Y/PC
# OF FIXTURES	3	6	3
FIXTURE LOCATION	1 TO THE RIGHT OF ENTRANCE DOOR, 1 ON WALL ON LEFT AROUND THE CORNER, 1 ON RIGHT SIDE WALL PERPENDICULAR TO ENTRANCE	(3) ABOVE STORE SIGN ON SOUTH RIVERSIDE AVE, (3) ABOVE STORE SIGN ON BENEDICT BLVD	MOUNTED AT 14' OFF GRADE TO FACADE ON BENEDICT BLVD AT +/-14' O.C. CENTERED
WATTS/FIXTURE	14W	13W	50W
LUMEN	875	388	4,237
COLOR TEMP.	3000K (WARM)	4000K (NEUTRAL)	3000K
CRI	80+	86	82
EFFICIENCY	80%	85%	97%
INPUT WATTS		15W	52W

WATERLINE
STORMWATER
FORCE MAIN



NOTE:

- SIGN TO BE PLACED ON GARBAGE ENCLOSURE: 'NO PARKING TUES. & WED. 6AM - 10AM'
- PROPOSED GARBAGE CONTAINER (EXISTING) 42" X 78" X 3' H), W/6' H. FENCED IN ENCLOSURE TREX FENCING & GATE 'WOODLAND BROWN'
- PROPOSED RECYCLABLE CONTAINERS, (2) 2'-4" X 3' X 3' H (50 GALLON CAP.) STAMPED CONCRETE WALKWAY, USING 'SCOFIELD' CHROMIX COLOR ADDITIVE. (SG160-4 RED BRICK - COLOR APPROVED IN FIELD) MORE DETAILS IN PROJECT MANUAL
- CLOTHING BINS TO BE REMOVED
- EXIST. BOLLARDS TO BE REMOVED AND MOST OF THEM WILL BE RE INSTALLED SEE SITE PLAN LOCATION
- EXISTING SIGN TO REMAIN

NOTE:

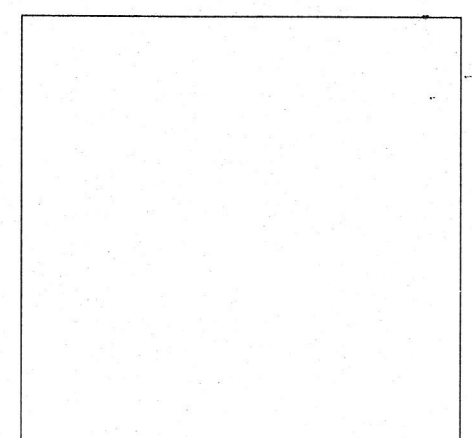
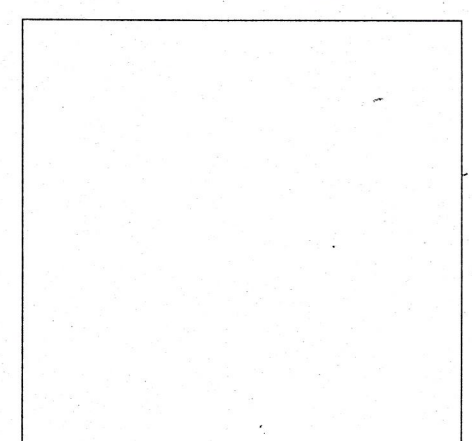
ALL INFORMATION TAKEN FROM SURVEY PREPARED BY EDWARD G. MIHALCZO, LAND SURVEYOR LLC
24 BERKSHIRE RD
YONKERS, NY 10710
RESURVEY: MAY 12, 2014
ARCHITECT NOT RESPONSIBLE FOR SAME

SECTION 79.13
BLOCK 1
LOT 70

CONSTRUCTION PHASE WILL ADHERE TO THE SWPPP, (STORM WATER POLLUTION PREVENTION PLAN) CHAPTER 196, ARTICLE 1. SILT FENCING WILL BE ERECTED. TOP SOIL WILL HAVE TO BE MOVED TO ANOTHER LOCATION. THE PUBLIC SIDEWALK WILL HAVE TO BE KEPT CLEAR OF CONSTRUCTION DEBRIS AND PROTECTED AT ALL TIMES. THE FIRE DEPT. EASEMENT TO THE LEFT OF THE BUILDING MUST BE KEPT CLEAR OF EQUIPMENT, MATERIAL, ETC. AT ALL TIMES.

GENERAL NOTES:

- CONTRACTOR TO ERECT SCAFFOLDING AROUND THE STORE ENTRANCE AND WALKWAY TO PROTECT AGAINST CONSTRUCTION DEBRIS, EQUIPMENT AND MATERIALS.
- EXISTING BOLLARDS TO BE RELOCATED OR REMOVED, SEE SITE PLAN FOR DETAILS.
- PARTIAL EXISTING WALKWAY TO BE REMOVED TO ALLOW FOR NEW PAVING. SEE PAVING PATTERN FOR LOCATION.
- ALL TENANT PARKING TO BE MARKED WITH SIGN DISPLAYING THE APT. NUMBER, SEE DETAIL
- DOWNSPOUTS SHOWN ON PLAN TOGETHER WITH SCHEMATIC PIPING TO STORM WATER SYSTEM
- CMU WALL ALONG BENEDICT AVE TO BE FINISHED WITH STUCCO. CABLE TRELLIS TO BE MOUNTED BELOW BAY WINDOW FOR PLANTINGS



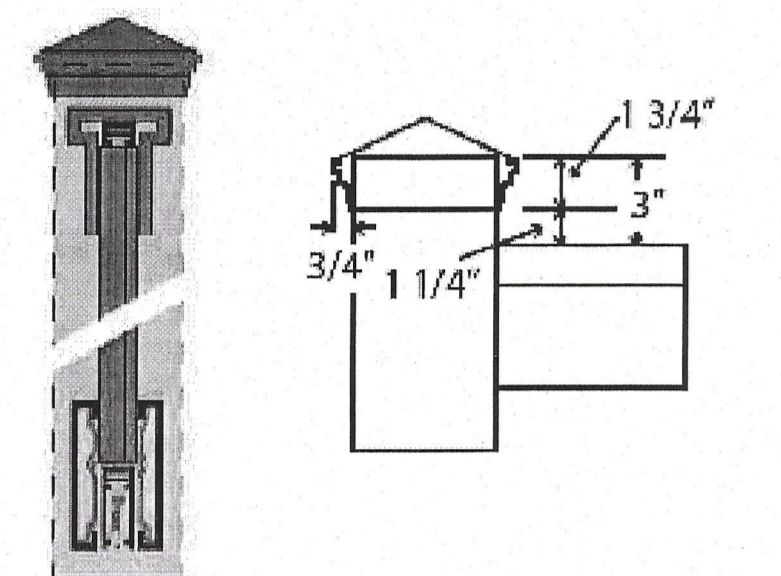
HEIKE A. SCHNEIDER
ARCHITECT, AIA, LEED AP
515 CROTON HEIGHTS ROAD
YORKTOWN HTS, NY 10598
914-962-2119

PROPOSED SITE PLAN
Title/Owner
ADDITION TO ABBY'S DELI
KUSSO CORPORATION
370 SOUTH RIVERSIDE AVE
CROTON-ON-HUDSON, NY 10520

Date: 07-08-15
Revision: 07-16-15
Bidding: 07-27-15

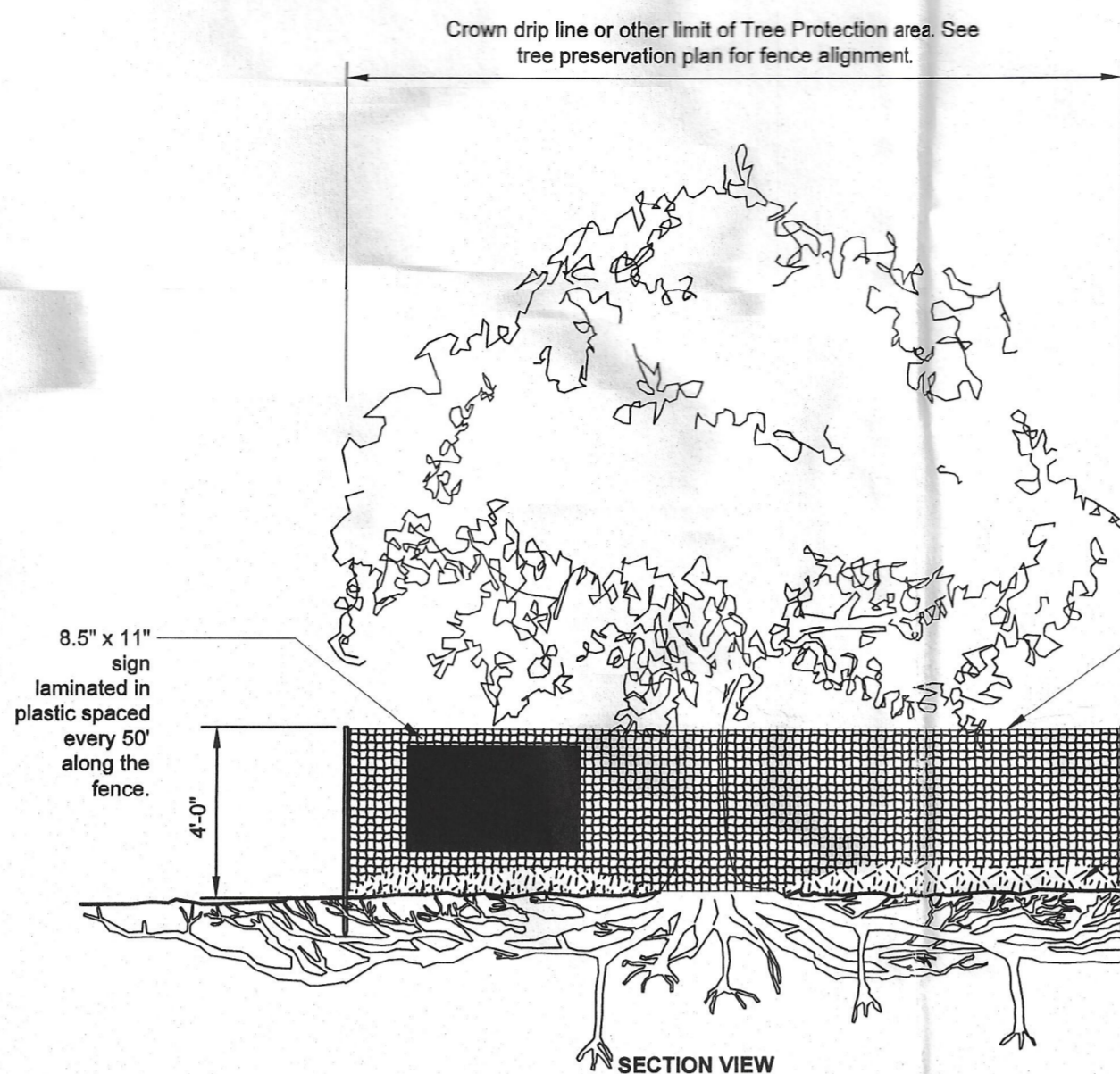
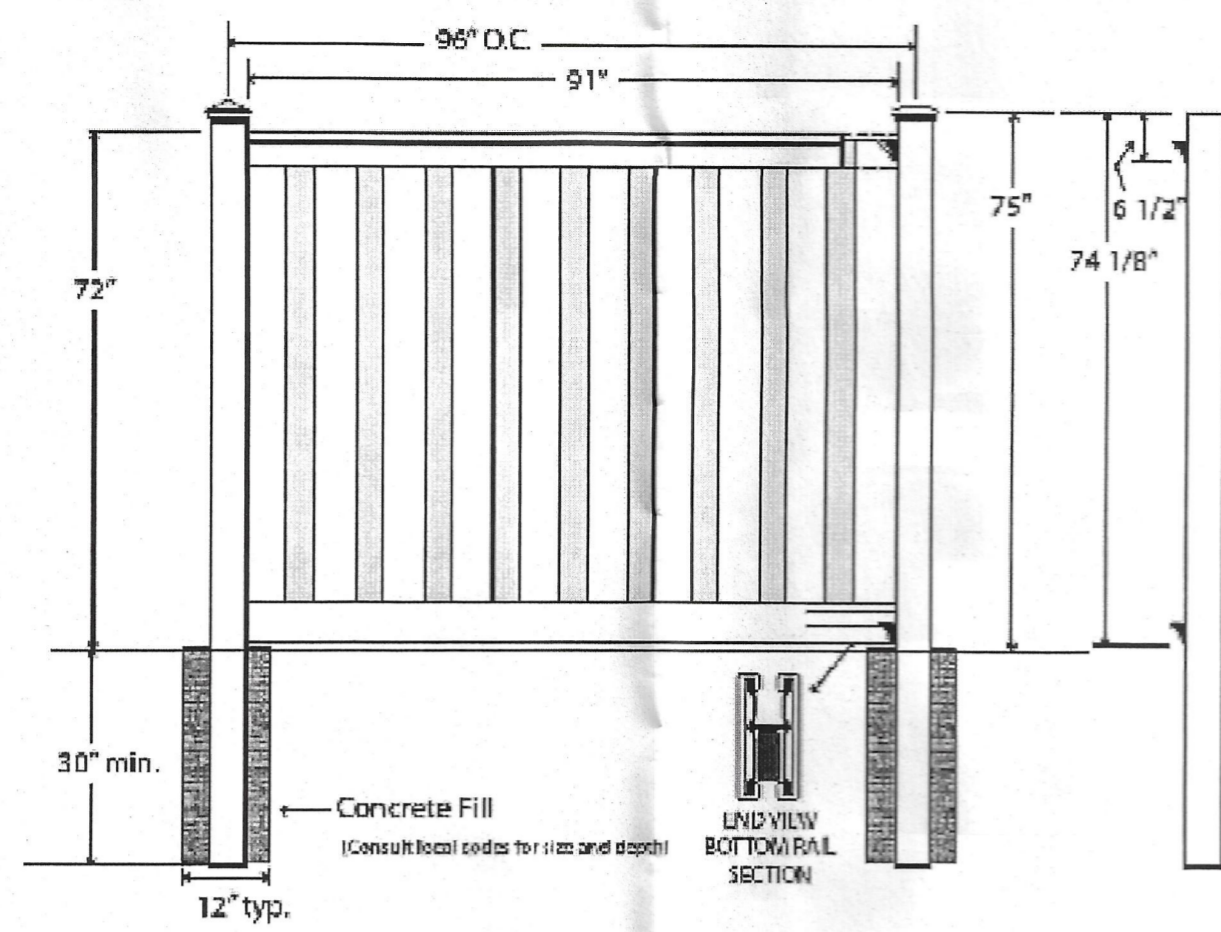
Trex Seclusions® Composite Fencing

Materials needed for the design above:	Quantity	Components
8' x 2.52" Post (Crown Fit) (Optional: 3' x 2.5" Post (Crown Separable))	1	
5' x 2" Post, 100' nom.	1	
4' x 4.5" Top Rail, 91' nom.	1	
1' x 3.62" Bottom Rail (Lower / Higher, 91' nom.)	2	
2.75' x 1.125" Aluminum Bottom Rail, 93.25' nom.	1	
1' x 3.62" Filler, 67' nom.	19	
1.25' x 5.125" Filler, 67' nom.	4	
1.625" Latcher Wood Screw	24	



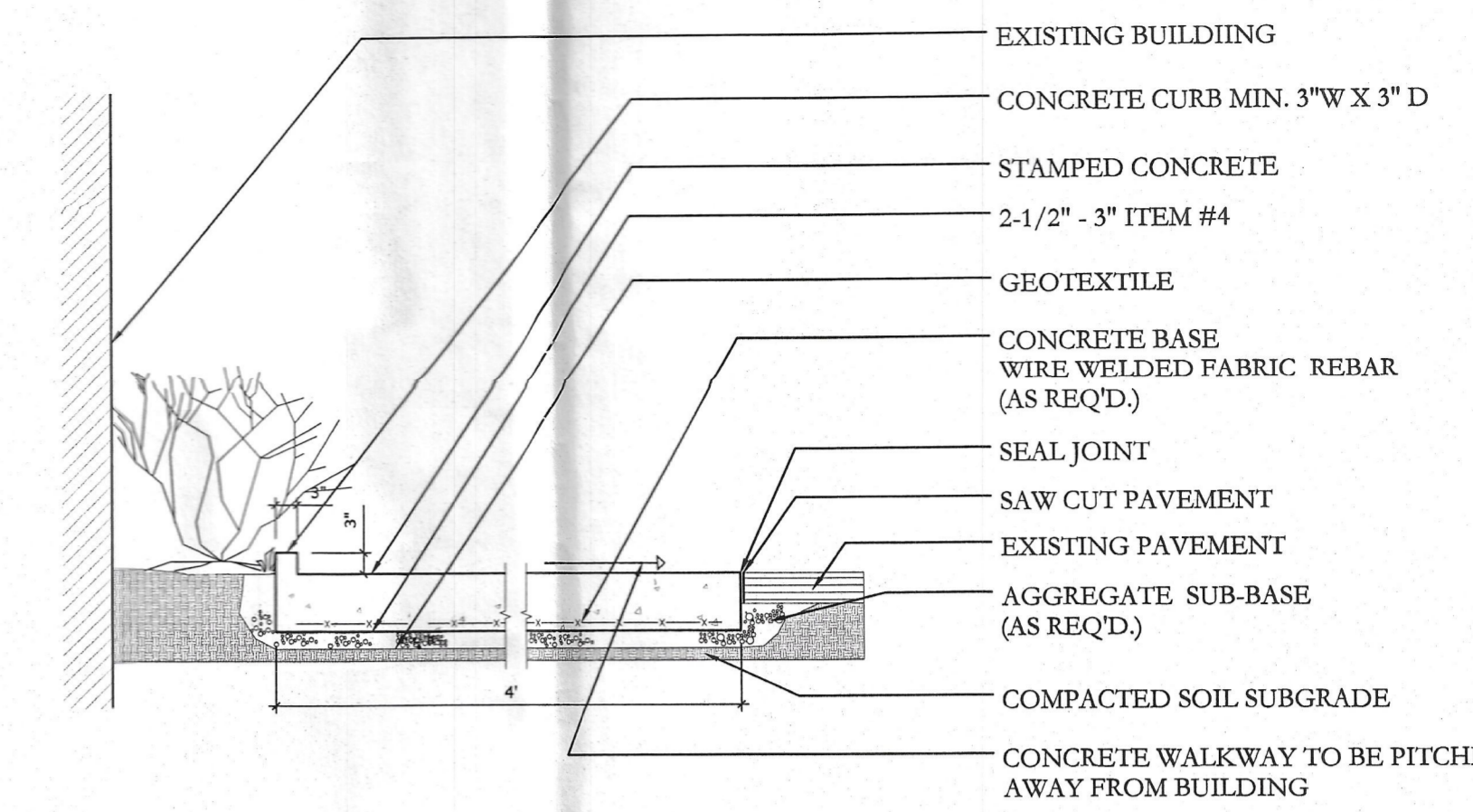
www.TrexFencing.com

Architectural Drawing 6' Height, 8' Post Centers



- Notes:
- 1- See specifications for additional tree protection requirements.
 - 2- If there is no existing irrigation, see specifications for watering requirements.
 - 3- No pruning shall be performed except by approved arborist.
 - 4- No equipment shall operate inside the protective fencing including during fence installation and removal.
 - 5- See site preparation plan for any modifications with the Tree Protection area.

URBAN TREE FOUNDATION © 2014
OPEN SOURCE FREE TO USE

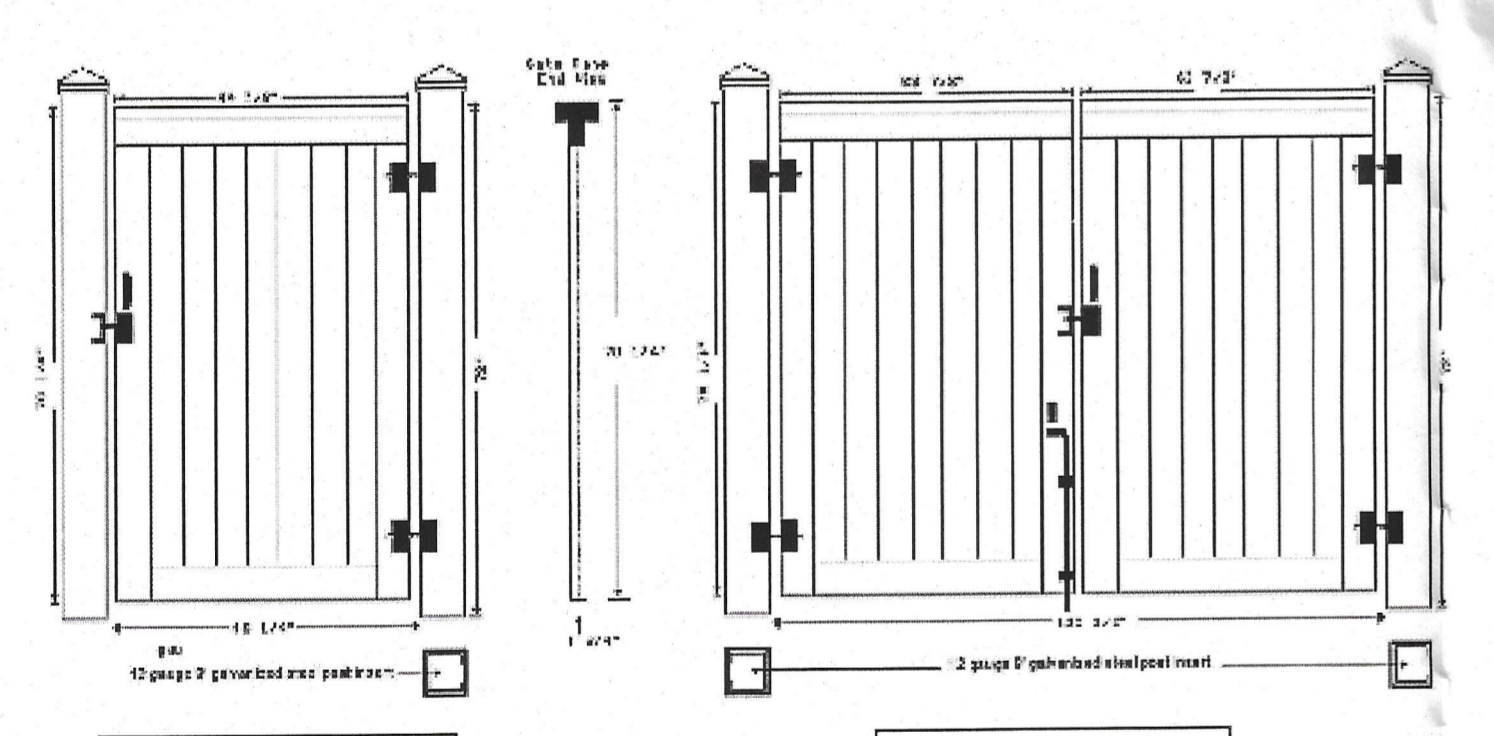


- NOTES:
1. BASE THICKNESS AND REINFORCING VARIES WITH TRAFFIC, CLIMATE, AND SUBGRADE CONDITIONS.
 2. CONCRETE BASE MINIMUM 2% SLOPE FROM CENTERLINE TO CURB.
 3. DO NOT USE DRAIN HOLES TO SUBGRADE WHEN WATER TABLE IS LESS THAN 2' FROM TOP OF SUBGRADE. DRAIN TO CATCH BASIN.

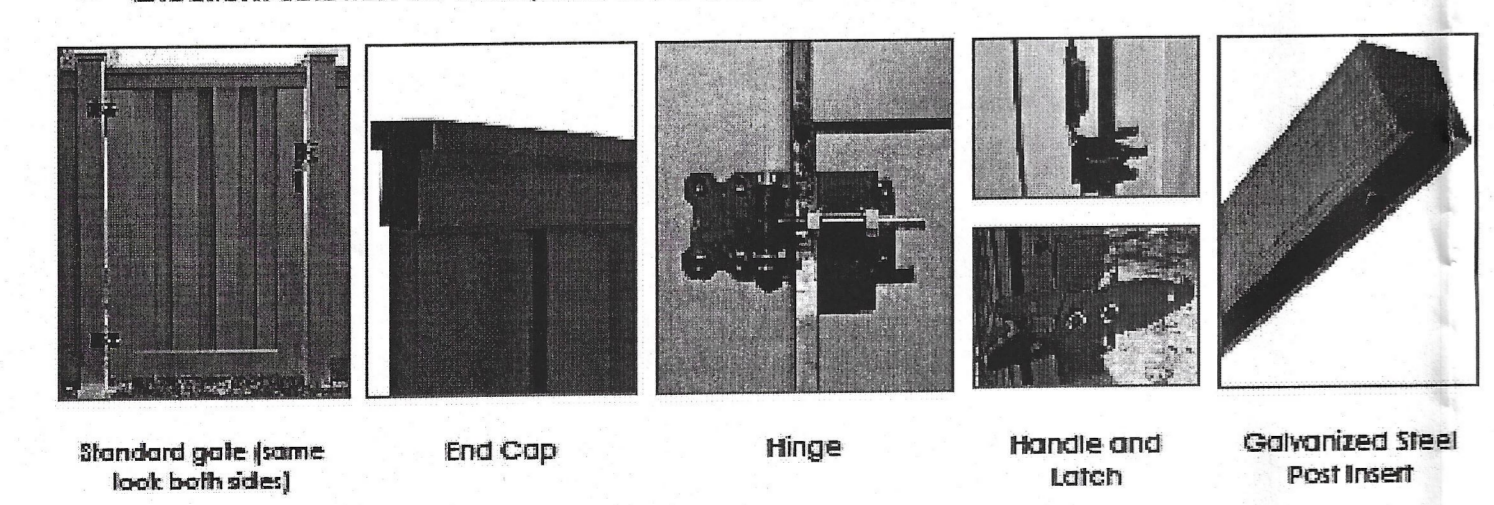
SECTION THROUGH WALKWAY / PARKING LOT

Trex Seclusions® Composite Fencing

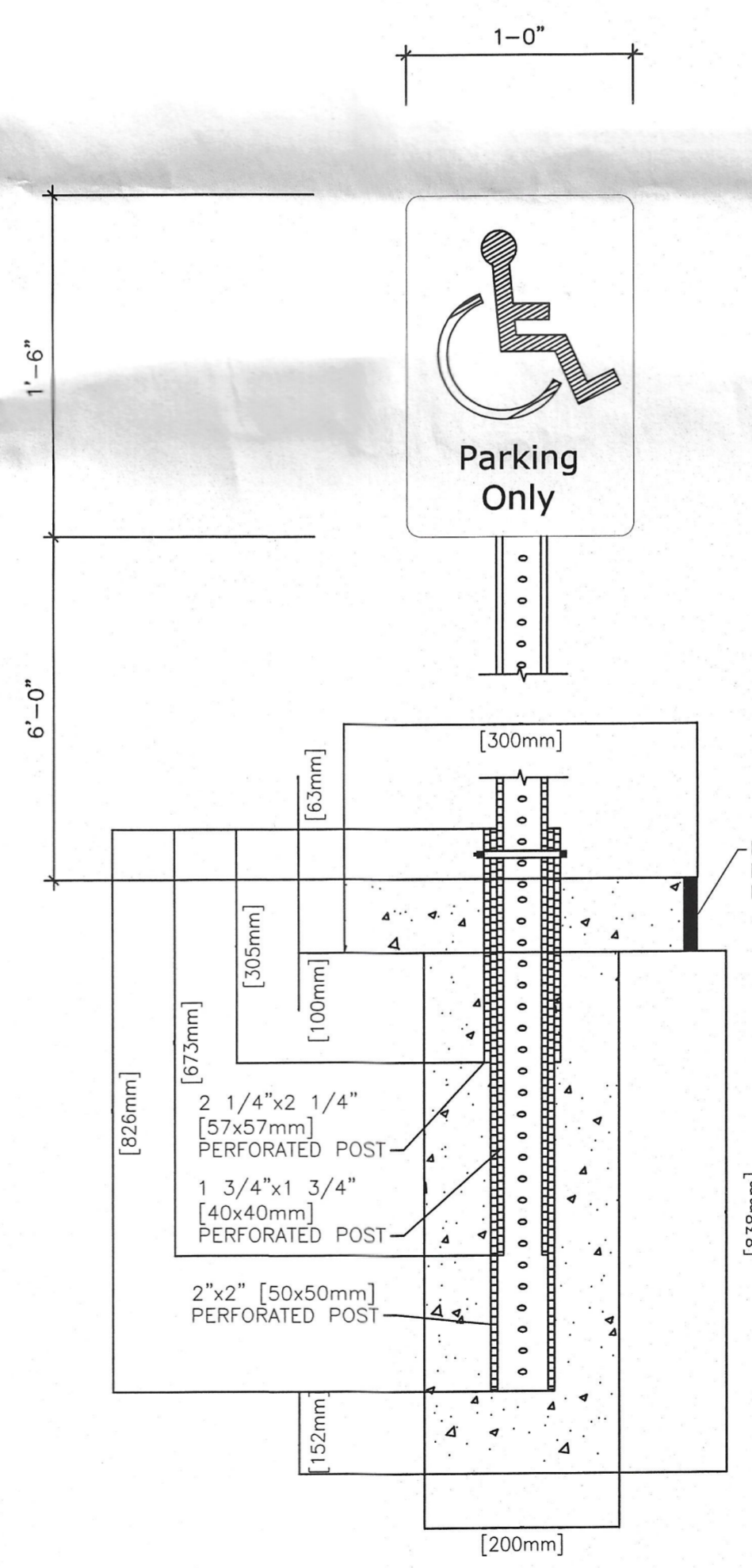
Standard Gate Specifications



- All gate hardware and fasteners are stainless steel and powder-coated black.
- Gaps between gate edges and post faces exist to allow clearance for hardware.
- Latches are lockable from both sides; hinges adjust by turning two bolts.
- Standard heights are 6' and 8' tall. Custom widths can be accommodated.
- Excellent solution for dumpster and utility enclosures.

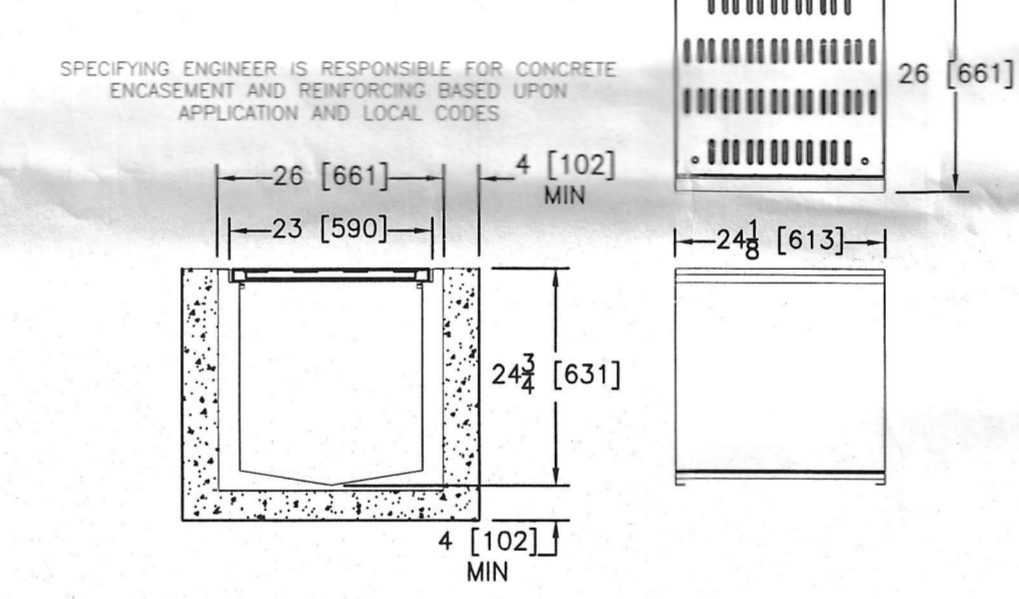


www.TrexFencing.com 877.700.8739 © 2014 Trex® Fencing 012014



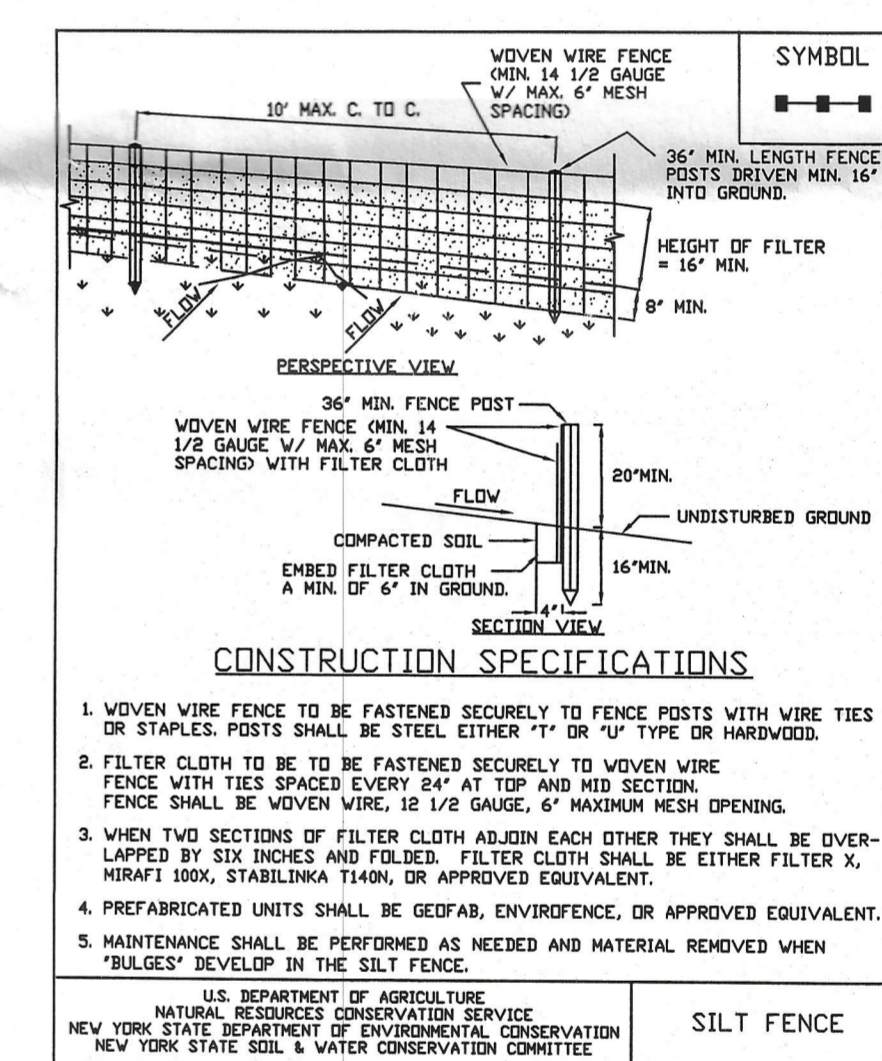
SIGN POST DETAIL SQUARE TUBE FOUNDATION

- MATERIALS:
1. PERFORATED POSTS SHALL BE SQUARE TUBE FORMED FROM 0.105 U.S.S. GAUGE ASTM A-366 COLD ROLLED CARBON STEEL. THE SQUARE TUBES SHALL BE WELDED DIRECTLY IN THE CORNER BY HIGH FREQUENCY RESISTANCE WELDING OR EQUAL. THE POSTS SHALL BE EXTERNALLY SCARFED TO AGREE WITH STD. CORNER RADI OF 5/32" [4mm] TO 1/64" [.3mm].
 2. PERFORATED POSTS SHALL BE GALVANIZED TO CONFORM TO ASTM A-525. COATING DESIGNATION G-90.
 3. ALL HARDWARE SHALL CONFORM TO ASTM A-307 CLASS A.
 4. ALL HARDWARE SHALL BE GALVANIZED TO CONFORM TO ASTM A-153 OR CADMIUM PLATED TO CONFORM TO ASTM A-165.
 5. ALL CONCRETE SHALL BE 2500 PSI.
- NOTES:
1. FOUNDATION WILL BE CONSTRUCTED WITH 1 3/4"x1 3/4" STARTER SIGN POST. STARTER SIGN POST SHALL BE REMOVED AFTER CONCRETE HAS SET AND EXPOSED SQUARE TUBING WRAPPED AND SEALED WITH DUCT TAPE.
 2. FOUNDATION LOCATED 1" FROM EDGE OF PAVEMENT.
 3. FOUNDATION LOCATION TO BE APPROVED BY ENGINEERING.
 4. POST FOUNDATIONS SHALL BE PERPENDICULAR TO THE PAVED SURFACE.
 5. BOLT WITH NUT AND LOCK WASHER TO BE 7/16"x3" GALVANIZED.
 6. REFER TO SIGN POST LOCATION DETAIL, DETAIL 4, THIS SHEET FOR INSTALLATION LOCATION.



CATCH BASIN DETAIL

NTS
CALCULATION BASED ON 100 YEAR STORM, 1 HOUR - RAINFALL IN CROTON-ON HUDSON AVERAGED AS 3 INCHES



CONSTRUCTION SPECIFICATIONS

1. WOVEN WIRE FENCE TO BE FASTENED SECURELY TO FENCE POSTS WITH WIRE TIES OR STAPLES. POSTS SHALL BE STEEL EITHER "1" OR "1 1/2" TYPE OR HARDWOOD.
2. FILTER CLOTH TO BE TO BE FASTENED SECURELY TO WOVEN WIRE FENCE WITH TIES SPACED EVERY 24" AT TOP AND MID SECTION. FENCE SHALL BE WOVEN WIRE, 1/2 GAUGE, 6" MAXIMUM MESH OPENING.
3. WHEN TWO SECTIONS OF FILTER CLOTH ADJOIN EACH OTHER THEY SHALL BE OVERLAPPED BY SIX INCHES AND FOLDED. FILTER CLOTH SHALL BE EITHER FILTER X, HIRAFI 100X, STABILINKA T140N, OR APPROVED EQUIVALENT.
4. PREFABRICATED UNITS SHALL BE GEOTAB, ENVIROFENCE, OR APPROVED EQUIVALENT.
5. MAINTENANCE SHALL BE PERFORMED AS NEEDED AND MATERIAL REMOVED WHEN "BULGES" DEVELOP IN THE SILT FENCE.

U.S. DEPARTMENT OF AGRICULTURE
NATURAL RESOURCES CONSERVATION SERVICE
NEW YORK STATE DEPARTMENT OF ENVIRONMENTAL CONSERVATION
NEW YORK STATE SOIL & WATER CONSERVATION COMMITTEE

Founder of Plastic Chamber Technology
Stormwater and Septic Solutions
Since 1986
CULTEC

1-800-4-CULTEC
custserv@cultec.com

Prepared For:	Project Information:	Engineer:	Calculations Performed By:
Abby Razghandy Kusso Corporation 370 South Riverside Ave Croton-on-Hudson NY 10520 845 642 0441 Fax abbyr@optonline.net	Abby's Deli 370 S Riverside Ave Croton-on-Hudson NY 10598 Date: July 02, 2015	Heike A. Schneider HS-Architecture 515 Croton Heights Road Yorktown Heights NY 10598 914 962 2119 914 962 2119 heike@hs-architecture.com	Heike A. Schneider HS-Architecture 515 Croton Heights Road Yorktown Heights NY 10598 914 962 2119 914 962 2119 heike@hs-architecture.com

Input Given Parameters	Chamber Specifications
Unit of Measure: English	Height: 30.5 inches
Select Model: Recharger 330XLHD	Width: 52.00 inches
Stone Porosity: 40.0%	Length: 8.50 feet
Number of Header Systems: 2 Header	Installed Length: 7.00 feet
Stone Depth Above Chamber: 6 inches	Bare Chamber Volume: 52.21 cu. feet
Stone Depth Below Chamber: 6 inches	Installed Chamber Volume: 79.26 cu. feet
Workable Bed Depth: 7.00 feet	Bed Depth: 4.63 feet
Max. Bed Width: 20.00 feet	Bed Width: 16.00 feet
Storage Volume Required: 660.00 cu. feet	Storage Volume Provided: 858.51 cu. feet

Materials List			
Recharger 330XLHD Stormwater System by CULTEC, Inc.			
Approx. Unit Count - not for construction	8	pieces	
Actual Number of Chambers Required	9	pieces	
Starter Chambers	3	pieces	
Intermediate Chambers	3	pieces	
End Chambers	3	pieces	
	HVLFC-24 Feed Connector	4	pieces
	CULTEC No. 410™ Filter Fabric	130.88	sq. yards
	CULTEC No. 20L Polyethylene Liner	32.00	feet
	Stone	32.70	cu. yards

PROPOSED SITE DETAILS

Plan Title

Title/Owner

HEIKE A. SCHNEIDER
ARCHITECT, AIA, LEED AP
515 CROTON HEIGHTS ROAD
YORKTOWN HTS, NY 10598
914 962-2119

ADDITION TO ABBY'S DELI
KUSSO CORPORATION
370 SOUTH RIVERSIDE AVE
CROTON-ON-HUDSON, NY 10520

Date: 07-08-15
Revision: 07-16-15
07-28-15
Bidding:

S 2
3 OF 9