

LOGO VERSIONS

LOGO VARIATIONS

Clear Space Guidelines | Width of $\diamond = X$ | Clear Space Around Logo = 2X



BORDER WIDTH GUIDELINES

For Signs Only Displaying the Logo and No Other Elements | Width of $\diamond = X$

Square/Rectangle Signs
Border Width = 5/12 of X

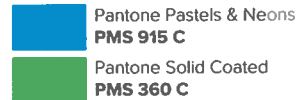
Circular Sign
Border Width = 5.5/12 of X



Logo Centering on Sign Adjusted to Look More Visually Centered vs. Mathematically Centered When Used on a Sign with the Logo Only

COLOR PALETTE

PRIMARY (LOGO)



SECONDARY



PAINT	VINYL (Opaque)	VINYL (Trans/First Surface)	VINYL (2-Sided)	AWNING
All Painted Surfaces to Have a Satin Finish	Digitally Printed (Latex) on 3M IJ180 Vinyl with 3M Matte Lamination Note: Back of 3M IJ180 Vinyl is Gray	Digitally Printed (UV Backlit) on Trans White Vinyl with 3M Matte Lamination	Digitally Printed (Latex - Color/White/Color) on Clear Perm PVC Vinyl with 3M Gloss Lamination	Sunbrella Fabric Ocean Blue Painted Graphics (White/PMS 915 C)

TYPOGRAPHY

LOGO FONTS

"Magical Beginnings" | "LEARNING CENTERS"
Goldplay Alt Semi Bold | **Avenir Black**

SIGN FONTS

Headings | Body
Lexend Deca - SemiBold | **Mulish Regular**

PICTOGRAMS



SALES REPRESENTATIVE
Chrissy Ripley
INTERNAL PROJECT MANAGER
Marie Mercier
FIELD MANAGER
Shaun White
ACCOUNT COORDINATOR
Laurie Kalivas
DESIGNER
CW

SCALE 1/4"

SHEET ID
G01.00

©2020 This document and the designs herein are the property of Sign Design, Inc. They may not be reproduced or used for any other purpose without the written permission of Sign Design, Inc. The colors printed on this page are a very close approximation and should not be used or reproduced in any way without used in a printer's shop. Please refer to color swatches and color number match and replace section.

181177

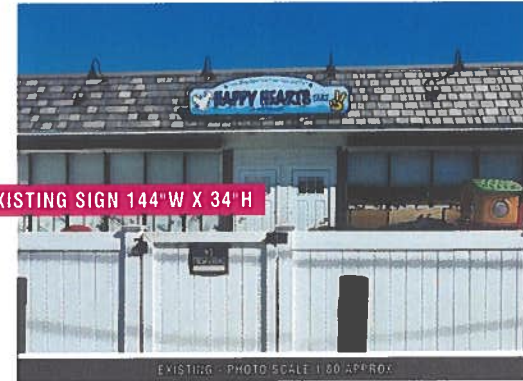
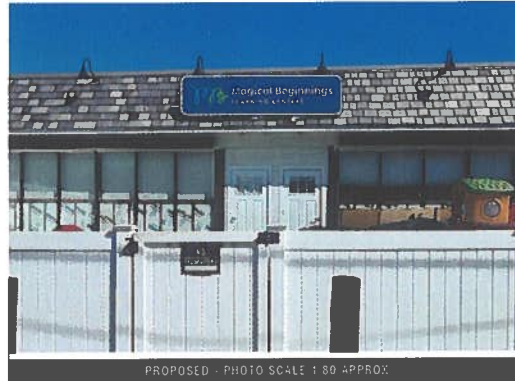
Version 07
03-19-26

Magical Beginnings
365 S. Riverside
Croton-On-Hudson, NY

Building Sign (Non-Lit) (Riverside Ave Side)

Quantity: 1 Single-Sided

- 1 Sign Panel
 - 1.5" Duna Coraloam HDU 15# (Painted White)
 - V-Bevel Carved and Paint Filled Graphics (PMS 3597 C Dark Blue, 915 C Light Blue, 360 Green)
 - 080 Aluminum Backer (Painted PMS 3597 C Dark Blue)
- 2 Installation
 - Mechanically Fastened to Roof TBD
 - Reuse Existing Bracket? Fabricate New Brackets?



170 Liberty Street
Brockton, MA 02301
508-580-0094

SALES REPRESENTATIVE
Chrissy Ripley

INTERNAL PROJECT MANAGER
Marie Mercier

FIELD MANAGER
Shaun White

ACCOUNT COORDINATOR
Laurie Kalivas

DESIGNER
CW

SCALE 10%

SHEET ID
G02.00

© 2020 This document and the designs herein were produced and prepared for the project and remain the property of Sign Design, Inc. They may not be reproduced or used for any other purpose without the written permission of Sign Design, Inc. The colors printed on this page are a site color recommendation and should not be copied or reproduced in any way and/or used in conjunction with this proposal. Refer to color swatch sheet for precise number swatch and system selector.



REQUIRED
PRIOR TO
PRODUCTION

VERIFY INSTALLATION

181177

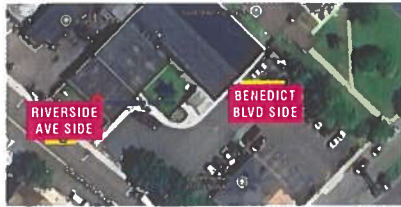
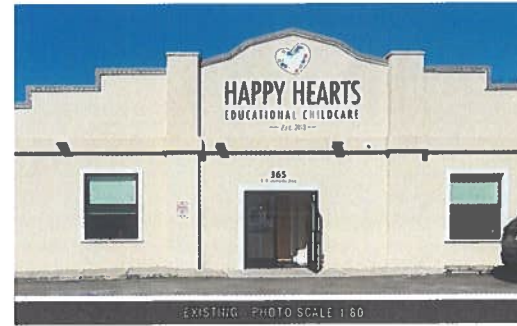
Version 07
03-19-26

Magical Beginnings
365 S. Riverside
Croton-On-Hudson, NY

Building Sign (Non-Lit) (Benedict Blvd Side)

Quantity: 1 Single-Sided Sign / Service

- 1 Sign Panel
 - 1.5" Duna Corafoam HDU 15# (Painted White)
 - V-Bevel Carved and Paint Filled Graphics (PMS 3597 C Dark Blue, 915 C Light Blue, 360 Green)
 - .080 Aluminum Backer (Painted PMS 3597 C Dark Blue)
- 2 Installation
 - Mechanically Fastened Flush to Facade
- 3 Service
 - Sign Design to Remove Existing Graphics
 - Sign Design Fill in Holes and Paint Top Facade to Cover Existing HH Logo Color TBD



LOGO ON SIGN SIZE/PROPORTION PER REQUEST ON WO 181495



170 Liberty Street
Brockton, MA 02301
508-580-0094

SALES REPRESENTATIVE
Chrissy Ripley

INTERNAL PROJECT MANAGER
Marie Mercier

FIELD MANAGER
Shaun White

ACCOUNT COORDINATOR
Laurie Kalivas

DESIGNER
CW

SCALE 10%

SHEET ID
G03.00

©2020 This document and the design herein are produced and owned by the project design team for or owned by Sign Design, Inc. They may not be reproduced or used for any other purpose without the prior written consent of Sign Design, Inc. This copy is provided for informational purposes only and should not be copied or reproduced in any way and should be used in connection with this project. Please refer to the project number 181177 and sheet number G03.00.

181177

Version 07
03-19-26

Magical Beginnings
365 S. Riverside
Croton-On-Hudson, NY



170 Liberty Street
Brockton, MA 02301
508-580-0094

SALES REPRESENTATIVE
Chrissy Ripley
INTERNAL PROJECT MANAGER
Marie Mercier
FIELD MANAGER
Shaun White
ACCOUNT COORDINATOR
Laurie Kalivas
DESIGNER
CW

SCALE 10%

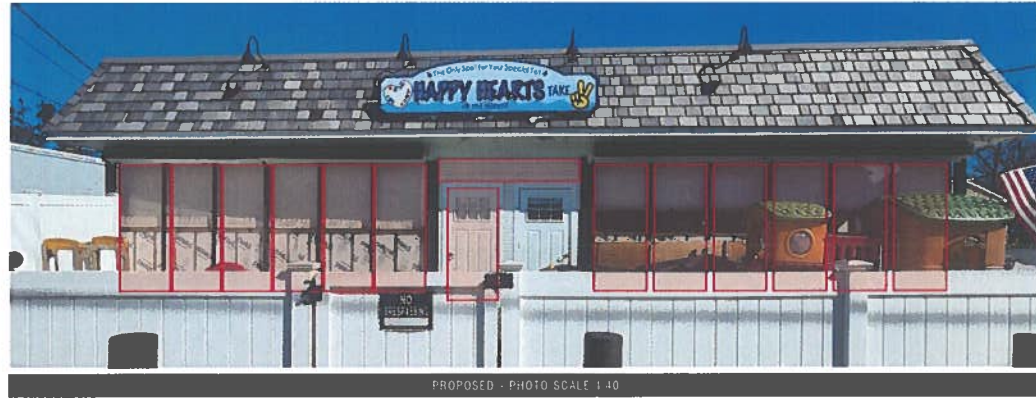
SHEET ID
G04.00

©2025 This document and the design herein are a product of Sign Design, Inc. They may not be reproduced or used for any other purpose without the written consent of Sign Design, Inc. The color or shade in this design are merely representative and should not be copied or reproduced in any way unless in conjunction with this project. Refer to color swatch for proper color match and reproduction.

Exterior Door Entrance Graphics

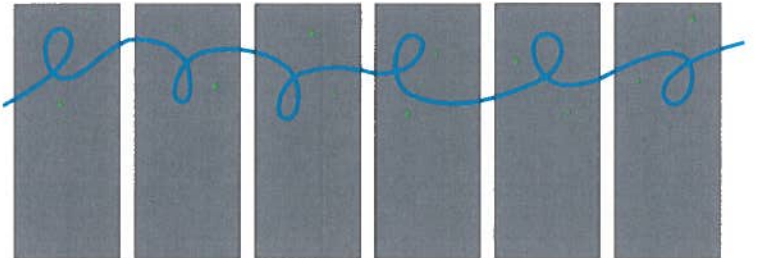
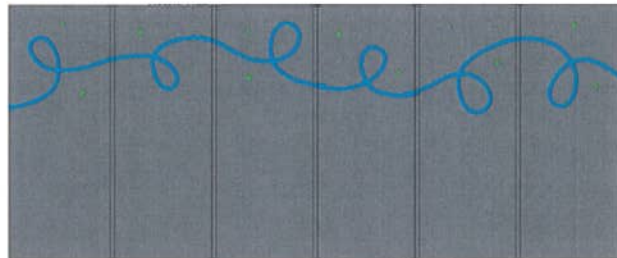
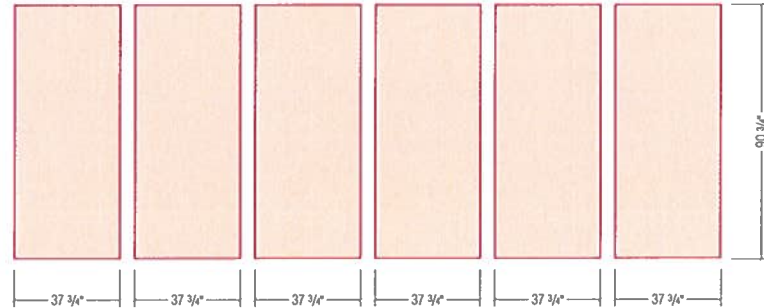
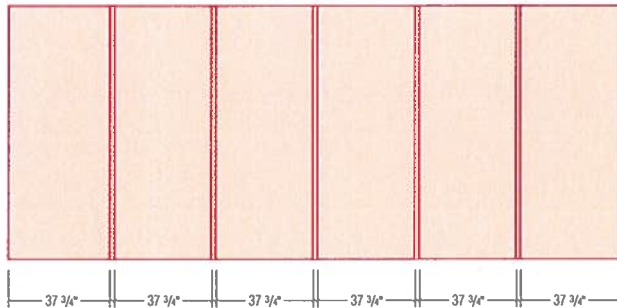
Quantity: 1 Each

- 1 Vinyl Graphics
 - Text: Avery A7 White Vinyl
 - Blue/Green Graphics: Digitally Printed (Latex - Color/White/Color) on Clear PVC Perm Vinyl with 3M Gloss Lamination
 - Contour Cut / First Surface Applied to Glass



PROPOSED - PHOTO SCALE 1:40

MULLION WIDTHS BETWEEN WINDOWS UNKNOWN



? REQUIRED PRIOR TO PRODUCTION

VERIFY SIZES? ALL WINDOWS DO NOT SEEM TO BE THE SAME SIZE WHEN PLACED ON THE PHOTO.