



CORSA

AT ESTERO CROSSINGS

P.Z.D.B. P.I.M.
ESTERO, FL
AUGUST 2021



BOOTH DESIGN GROUP
landscape architecture • planning • urban design



TABLE OF CONTENTS

3	VICINITY MAP
4	RESIDENTIAL SITE PLAN
5	MASTER PLAN
6	SITE PLAN
7	MAIN AMENITY
8	SECONDARY AMENITIES
9	LANDSCAPE CHARACTERISTICS
10	PARKING LOT PLAN
11	RESIDENTIAL LANDSCAPE CHARACTER
12	ACCESS GATES
13	ARCHITECTURAL CHARACTERISTICS
14	TYPE 1 MIXED USE BUILDING - RENDER
15	TYPE 1 MIXED USE BUILDING - FLOOR PLAN
16	TYPE 1 MIXED USE BUILDING - ELEVATION
17	MATERIALS / COLOR SHEET
18	TYPE 1 BUILDING - RENDER
19	TYPE 1 BUILDING - FLOOR PLAN
20	TYPE 1 BUILDING - ELEVATION
21	TYPE 2 BUILDING - ELEVATION
22	TYPE 3 BUILDING - ELEVATION
23	CLUBHOUSE - RENDER
24	CLUBHOUSE - FLOOR PLAN
25	CLUBHOUSE - ELEVATION
26	ACCESSORY BUILDINGS

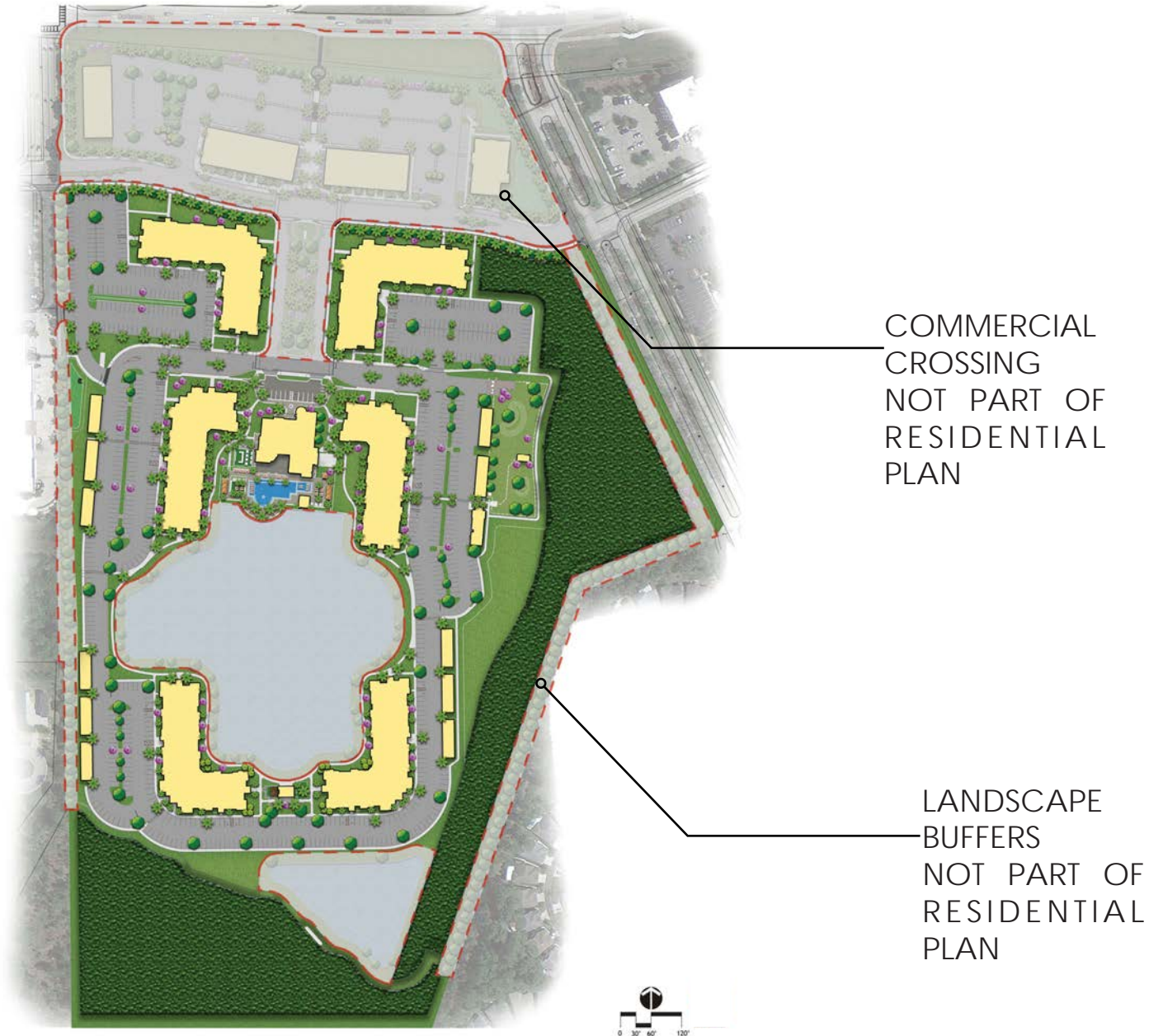
note: the following images and renderings are conceptual. final construction plans shall be in substantial conformance and achieve the design intent with outlined shown in.

VICINITY MAP



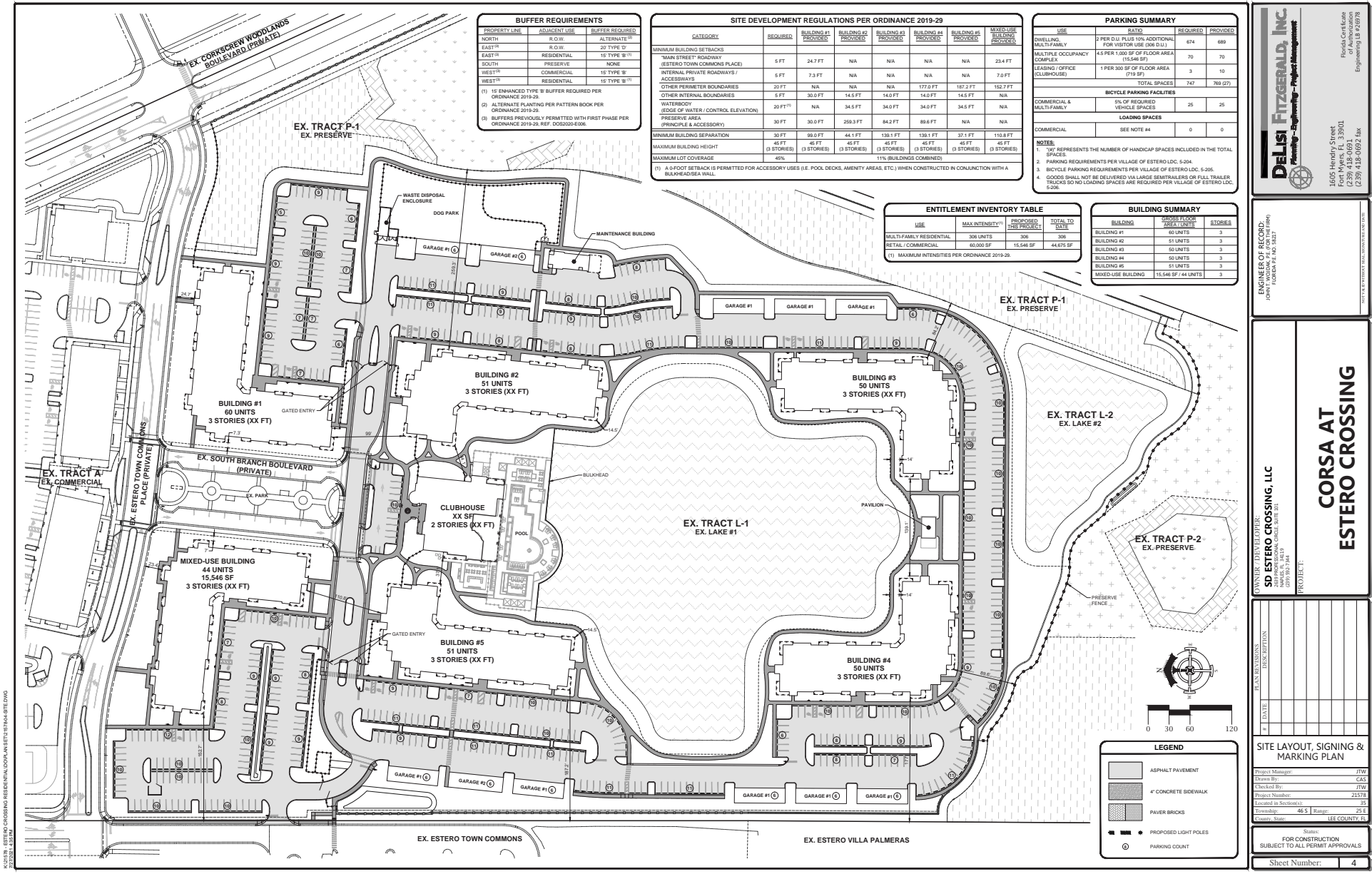
CORSA AT ESTERO CROSSINGS

RESIDENTIAL SITE PLAN



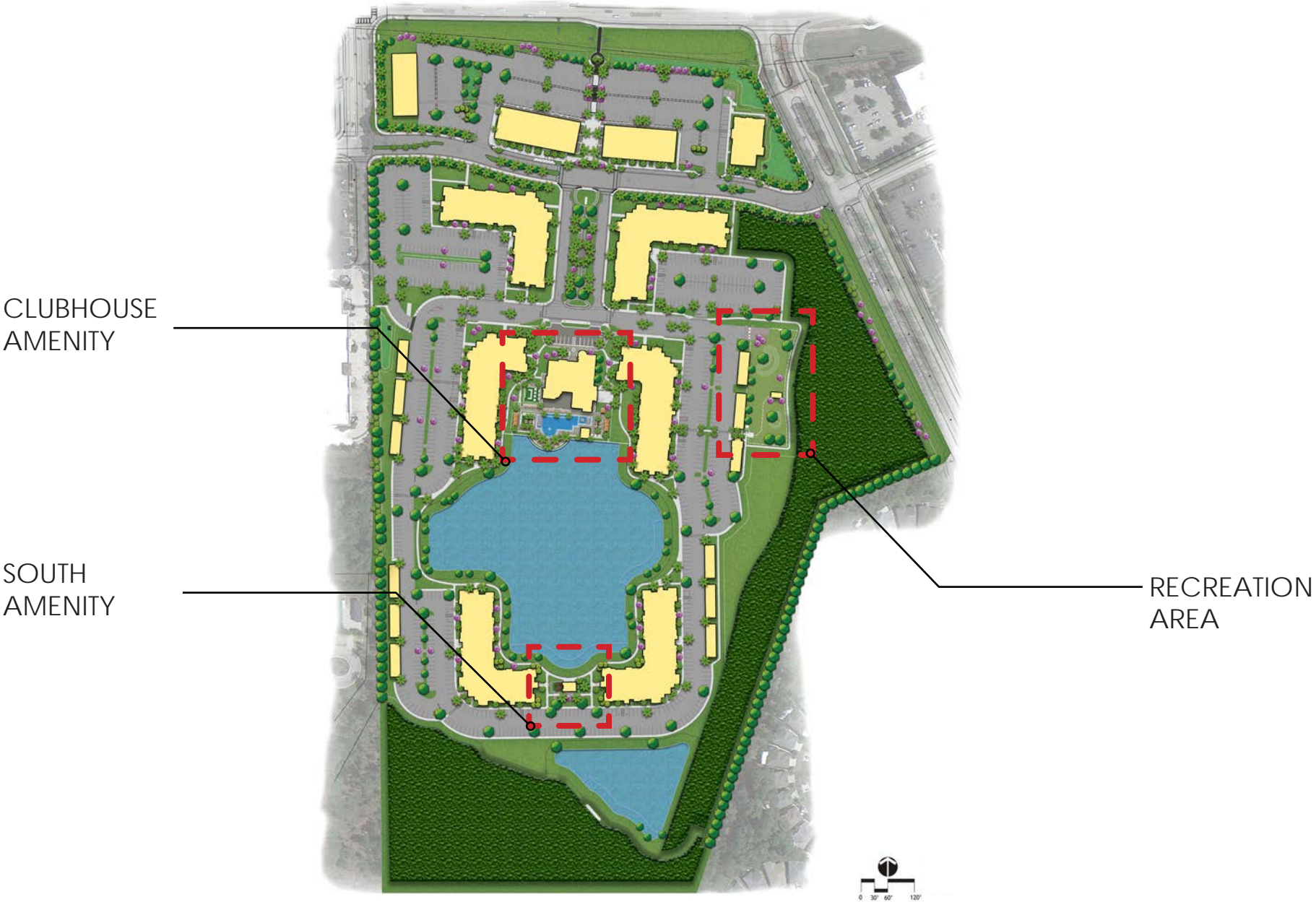
CORSA AT ESTERO CROSSINGS

MASTER PLAN



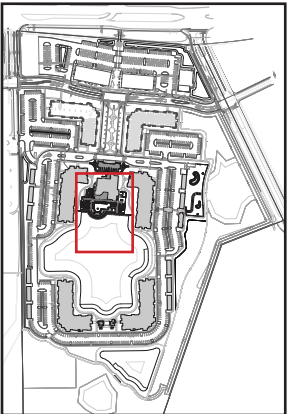
CORSA AT ESTERO CROSSINGS

SITE PLAN



MAIN AMENITY

- 1 RESORT POOL
- 2 COVERED AMENITY
- 3 CABANAS
- 4 LOUNGE AREA
- 5 AFTER HOURS LOUNGE



ROYAL PALM* 22' O.A.
4' GREY WOOD



CHRISTMAS PALM
12' O.A.



COCONUT PALM 24' O.A.
8' GREY WOOD



SECONDARY AMENITIES



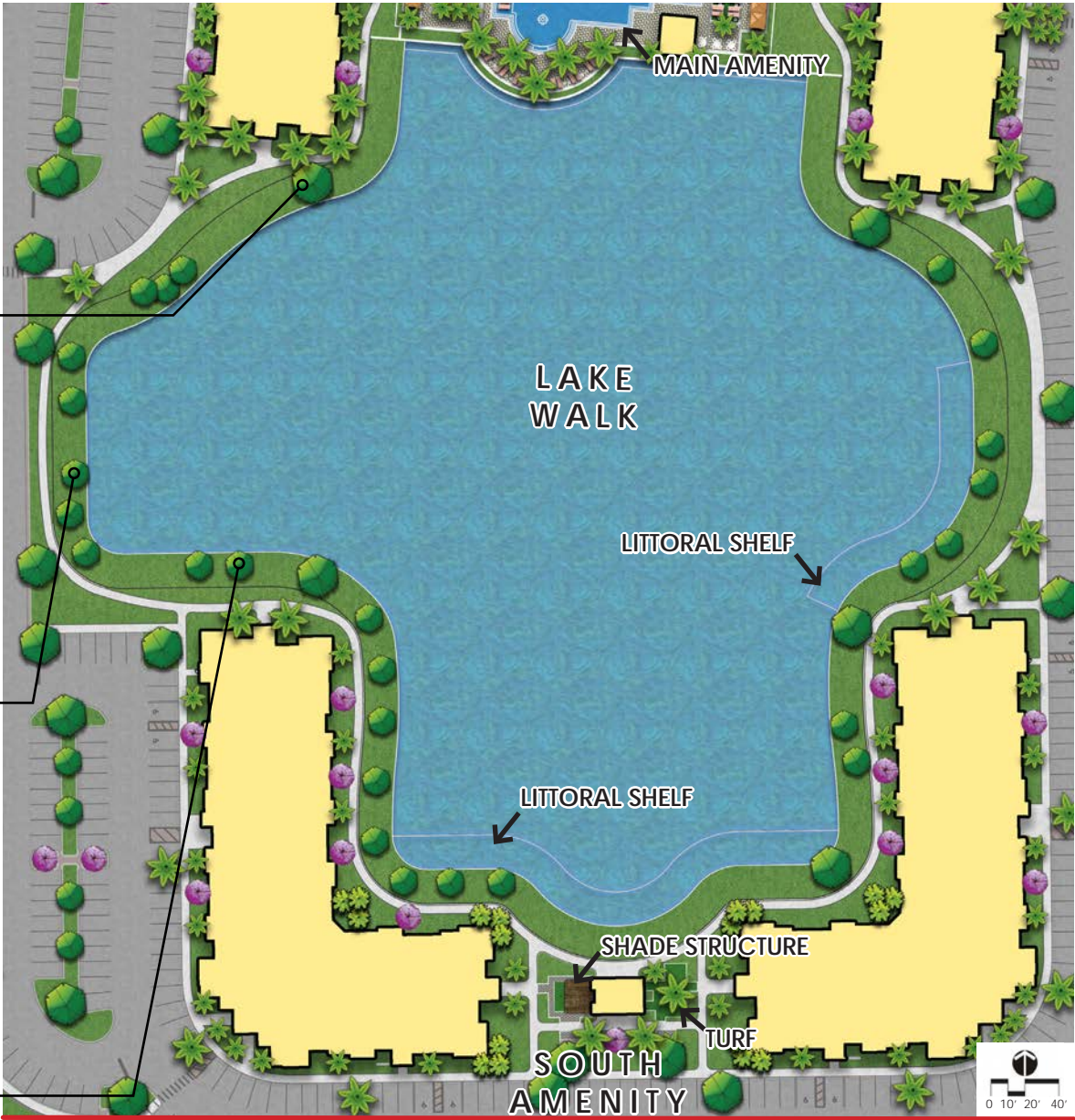
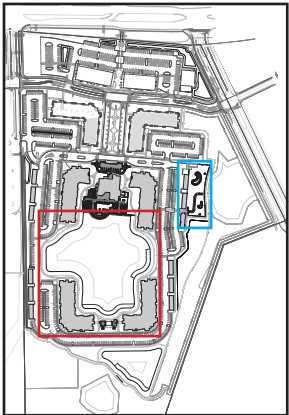
WEeping WILLOW
12-14' O.A.



BALD CYPRESS*
10' O.A.



RED MAPLE*
12' O.A.



LANDSCAPE CHARACTER

Sample Landscape Palette

PLANTINGS

- Palms and ornamentals trees
- Stately shade trees will be used in the parking lot medians to help decrease heat island effect
- Layers of landscaping will reduce visibility of the community from surrounding properties and provide noise attenuation

LANDSCAPE

Including buffers, the indigenous area, landscaped areas and the pond, the entire site as planned is over 50% pervious (green)

* Buffers, indigenous area, and the pond not part of residential plan



DURANTA STANDARD*



JATROPHA



TIBOUCHINA



SABAL PALM*



ALEXANDER PALM



ROYAL PALM*



GREEN ISLE FICUS



IXORA



MUHLY GRASS*

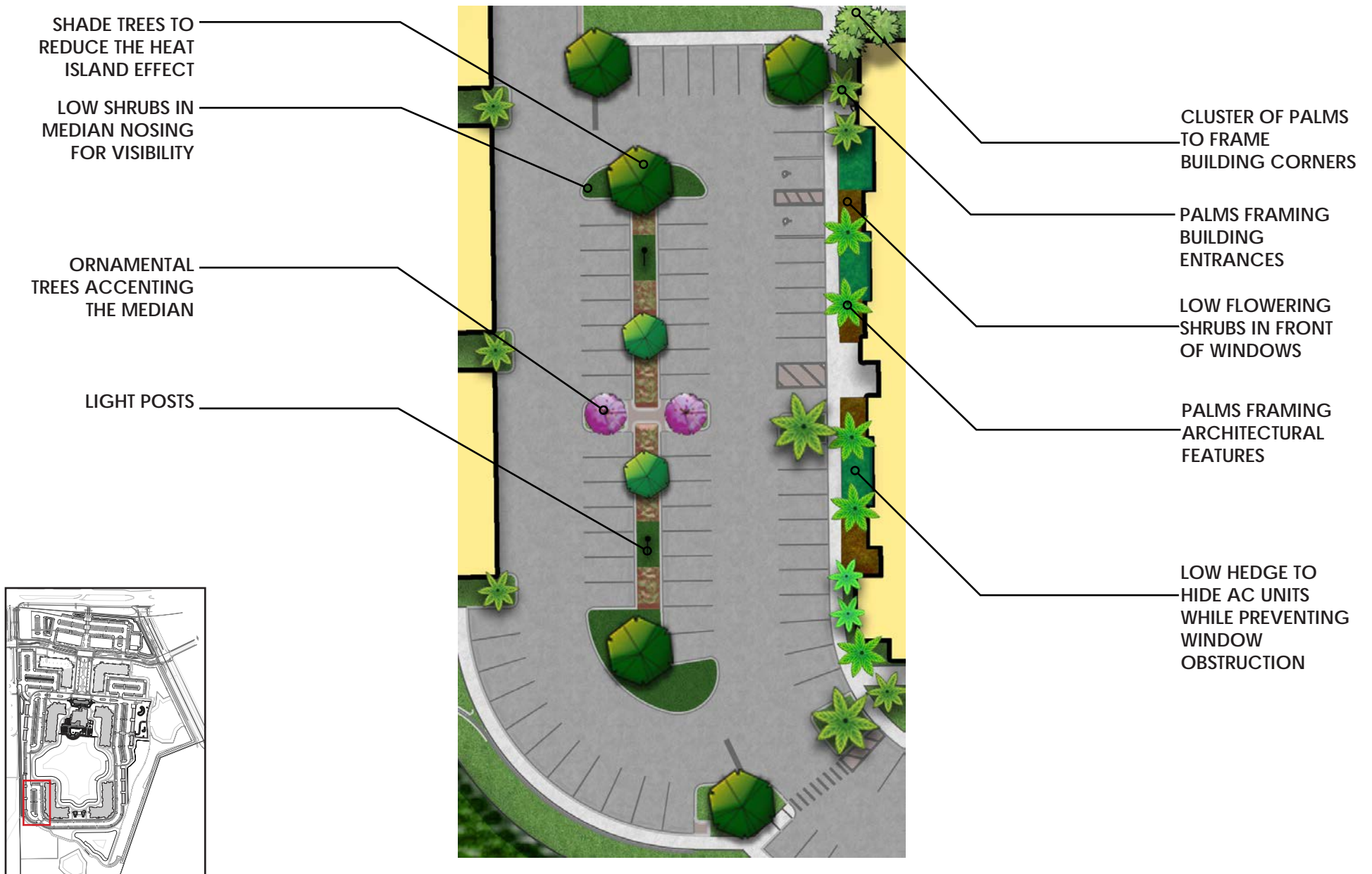


EVERGREEN PASPALUM



DWARF FIREBUSH*

PARKING LOT PLAN



CORSA AT ESTERO CROSSINGS

RESIDENTIAL LANDSCAPE CHARACTER



FOXTAIL PALM



ALEXANDER PALM



JATROPHA



BRUSH CHERRY



DURANTA*



IXORA



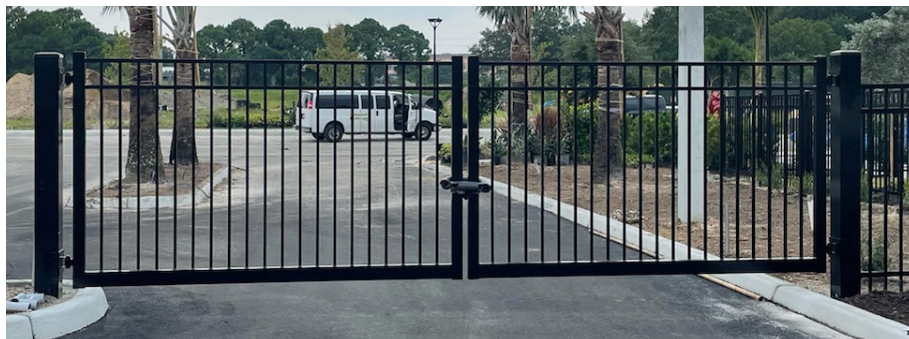
PODOCARPUS
'PRINGLES'*



'BLUE MY MIND'
BLUE DAZE

ACCESS GATES

Public Access to
Mixed-Use Building



*Example of proposed automated
residential gate. Gates located off
street to minimize their visibility
from frontage road*

Entry/Exit Gate

Public Access to
Leasing Center

— Pedestrian gate

— Vehicle gate

ARCHITECTURAL CHARACTER

“Mediterranean” Style Architecture

The “Mediterranean” style embraces the historical design of the Mediterranean regions with the modernity of “Florida Coastal” style of architecture. Exterior elements such as **smooth finished stucco**, **barrel tile roofs**, **arched openings** and **detailed gables** give the Mediterranean flavor. The clean modern massing of the architecture and the resort atmosphere created by lush landscaping and inviting amenity spaces, lend towards the “Florida Coastal” style. This elegant composition achieves a **harmonious** and **stylish** design of architecture that is timeless, graceful and will enhance the community of the Village of Estero for years to come.

Design Approach

Create a design that is timeless and graceful

- Barrel tiled roofs of warm and rich texture.
- Detailed roof gables with simple but enhancing design elements.
- Stylized windows – respectful yet contemporary.
- Stucco finish – blending of classic and modern styles.
- Balconies with rustic wood detailing and strategically placed arches.
- Identifiable and inviting building entries.
- Architecture and exterior spaces that create a resort style experience.



* PREVIOUS PATTERN BOOK RENDERING

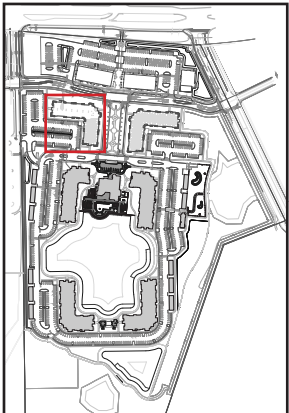
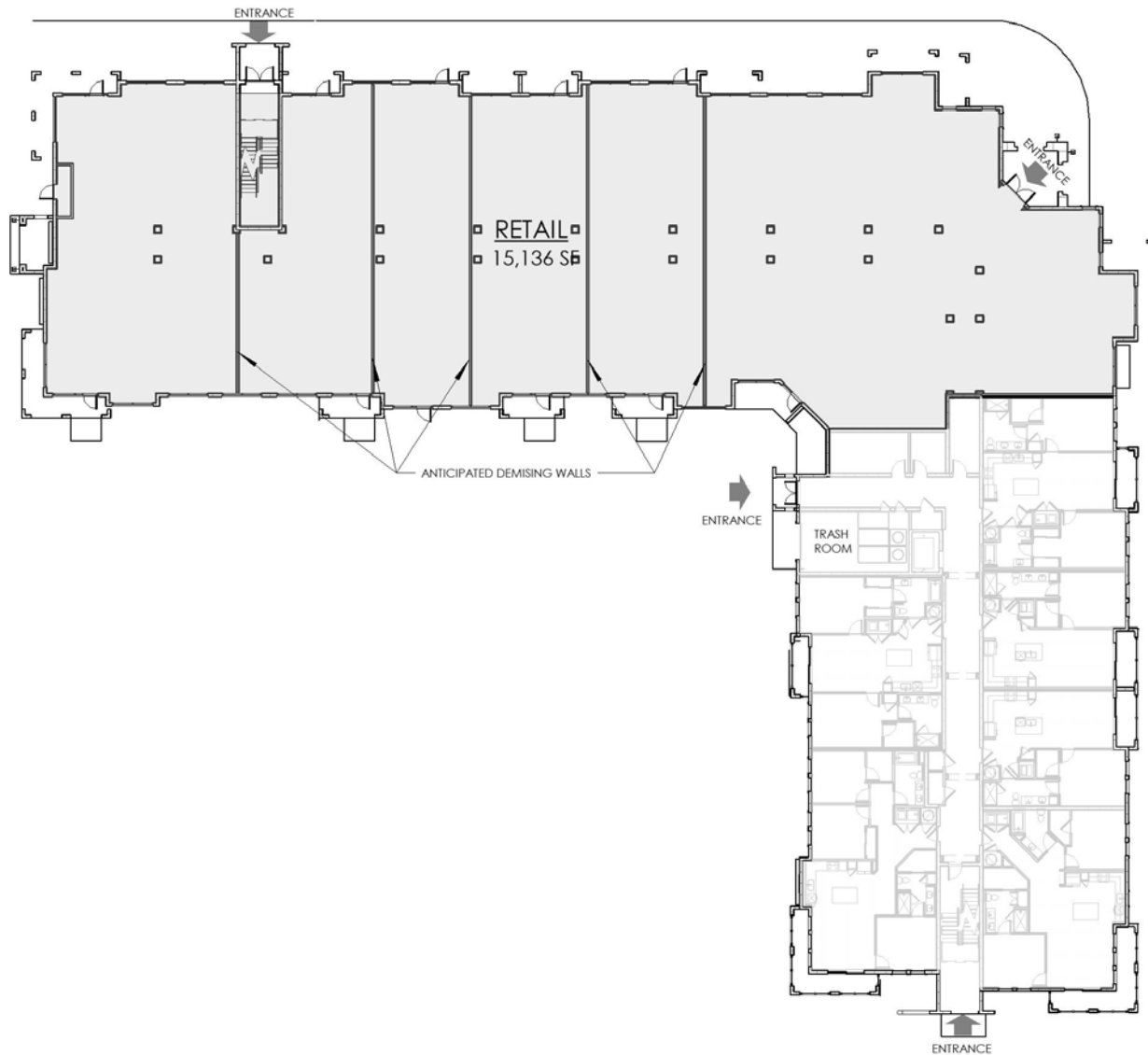
TYPE 1 MIXED USE BUILDING - RENDER



CORSA AT ESTERO CROSSINGS

* CONCEPTUAL LANDSCAPE
SUBJECT TO CHANGE

TYPE 1 MIXED USE BUILDING - FLOOR PLAN

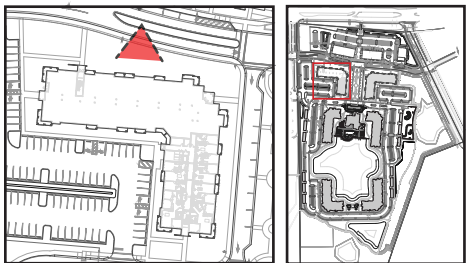


TYPE I - MIXED USE BUILDING - FLOOR PLAN

TYPE 1 MIXED USE BUILDING - ELEVATION



TYPE I - MIXED USE BUILDING - FRONT ELEVATION



CORSA AT ESTERO CROSSINGS

MATERIALS / COLOR SHEET

ACCENT COLOR

- ARCHITECTURAL TRIM
- PORCH COLUMNS
- CORBELS

SECONDARY WALL COLOR

- STUCCO FINISH

POWDER COAT:

- DURANER BERMUDA
- BRONZE UC105262
- ESWINDOWS
- ALUMINUM SNGLE
- HUNG

POWDER COAT:

- INTERPON
- D300088016M
- BALCONY PICKET
- RAILING
- ALUMINUM FASCIA

POWDER COAT:

- INTERPON BROWN
- D3000-8M255QF
- CORAL FL500
- STOREFRONT

SW 6069
French Roast

Interior / Exterior
Location Number: 196-C7

SW 9103
Farro

Interior / Exterior
Location Number: 203-C3

SW 6126
Navajo White

Interior / Exterior
Location Number: 264-C5

CONCRETE BARREL
TILE ROOF
-EAGLE 3723 ADOBE
BLEND

PRIMARY WALL COLOR
-STUCCO FINISH

ACCENT TILE
-ENCAUSTIC CEMENT TILE



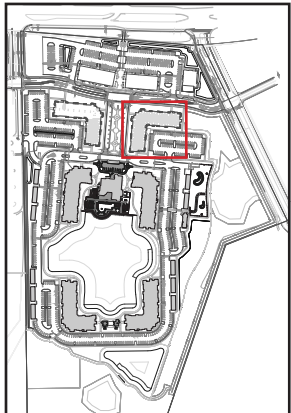
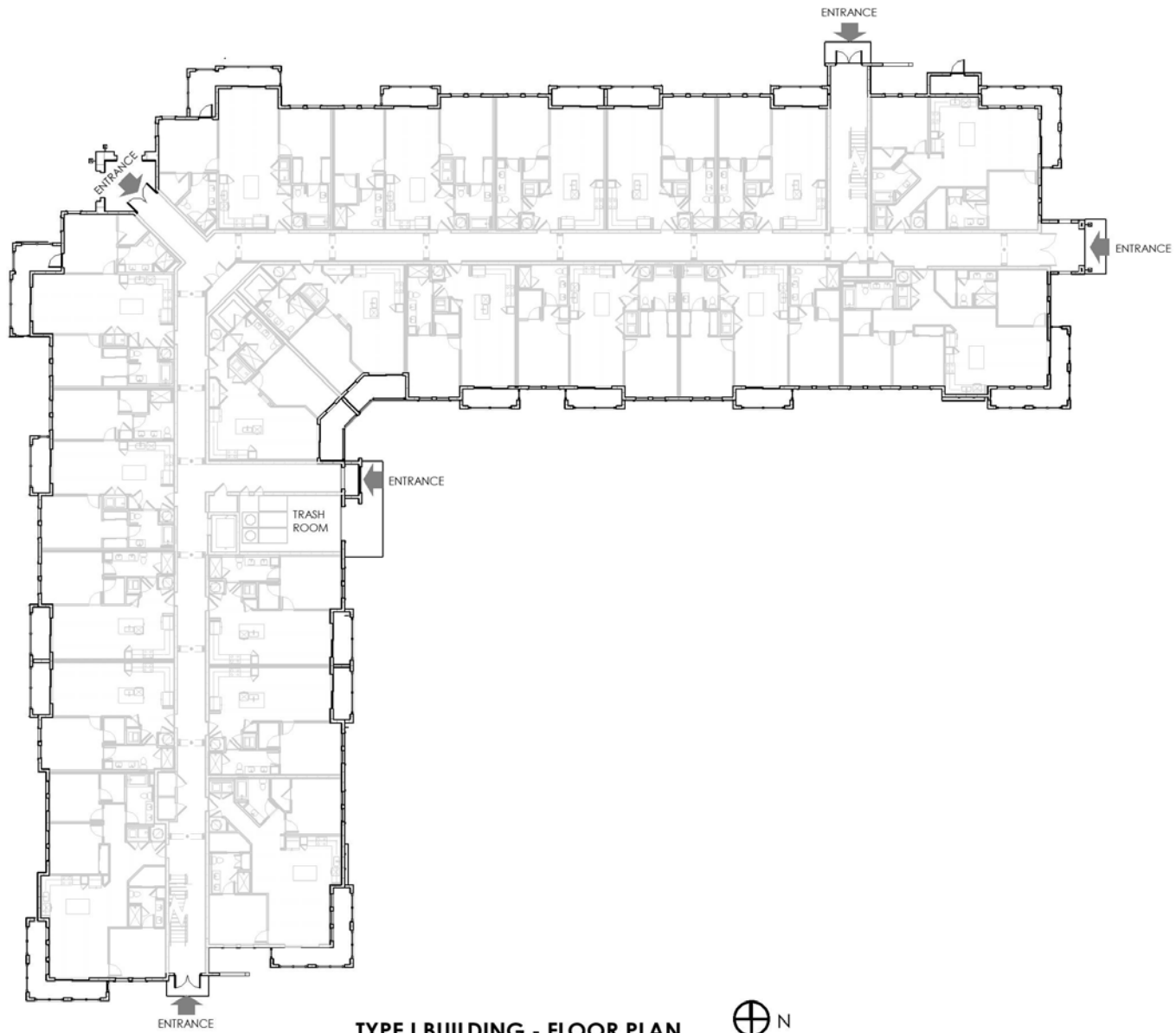
TYPE 1 BUILDING - RENDER



CORSA AT ESTERO CROSSINGS

* CONCEPTUAL LANDSCAPE
SUBJECT TO CHANGE

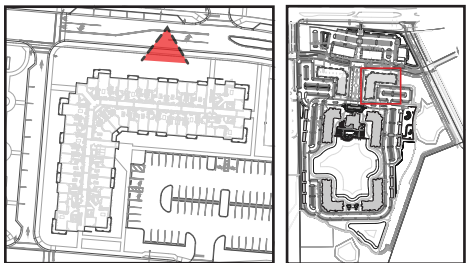
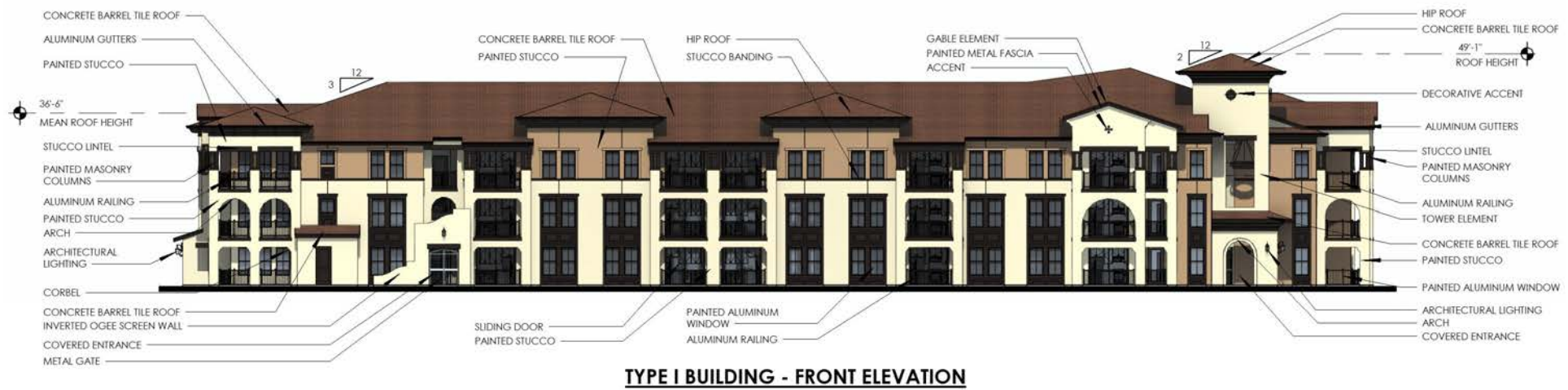
TYPE 1 BUILDING - FLOOR PLAN



TYPE I BUILDING - FLOOR PLAN

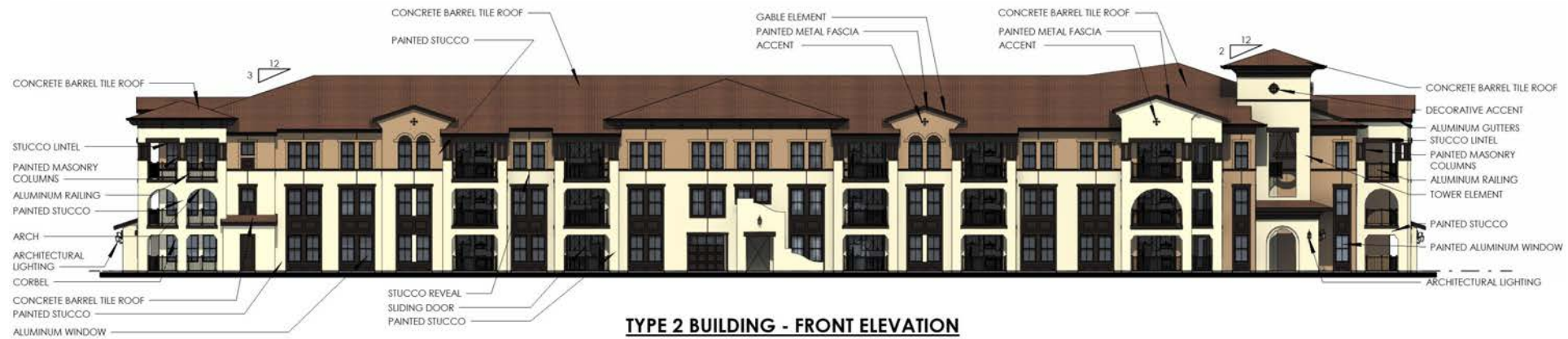


TYPE 1 BUILDING - ELEVATION



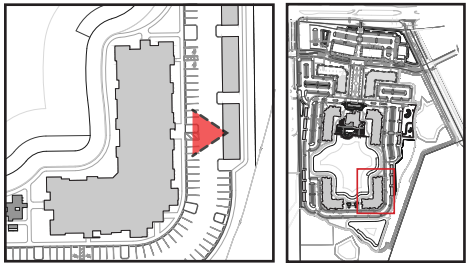
CORSA AT ESTERO CROSSINGS

TYPE 2 BUILDING - ELEVATION



CORSA AT ESTERO CROSSINGS

TYPE 3 BUILDING - ELEVATION



CORSA AT ESTERO CROSSINGS

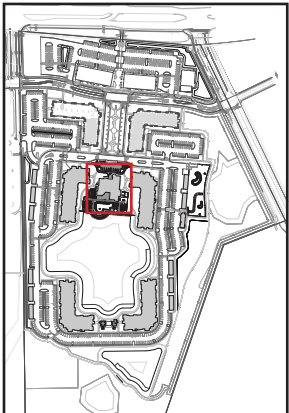
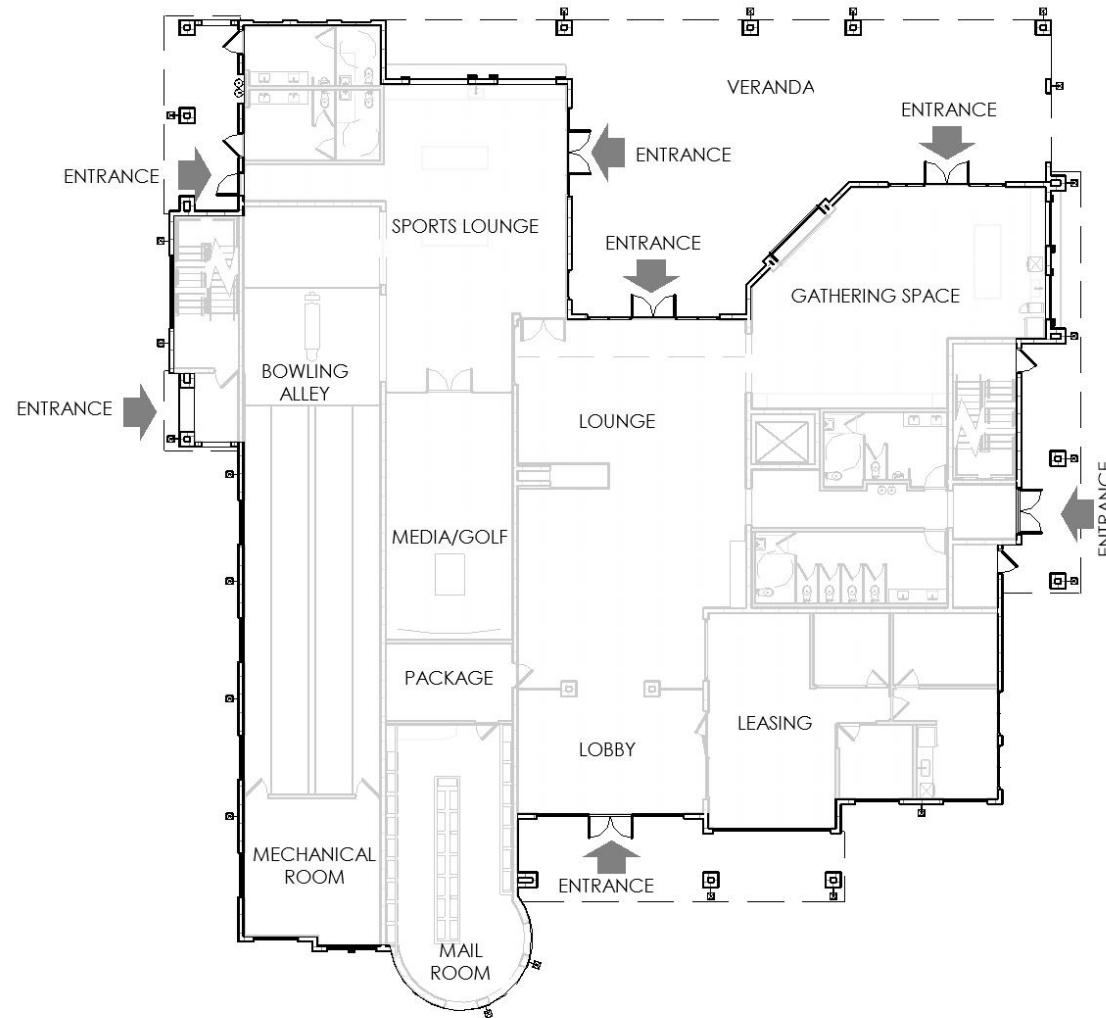
CLUBHOUSE - RENDER



CORSA AT ESTERO CROSSINGS

* CONCEPTUAL LANDSCAPE
SUBJECT TO CHANGE

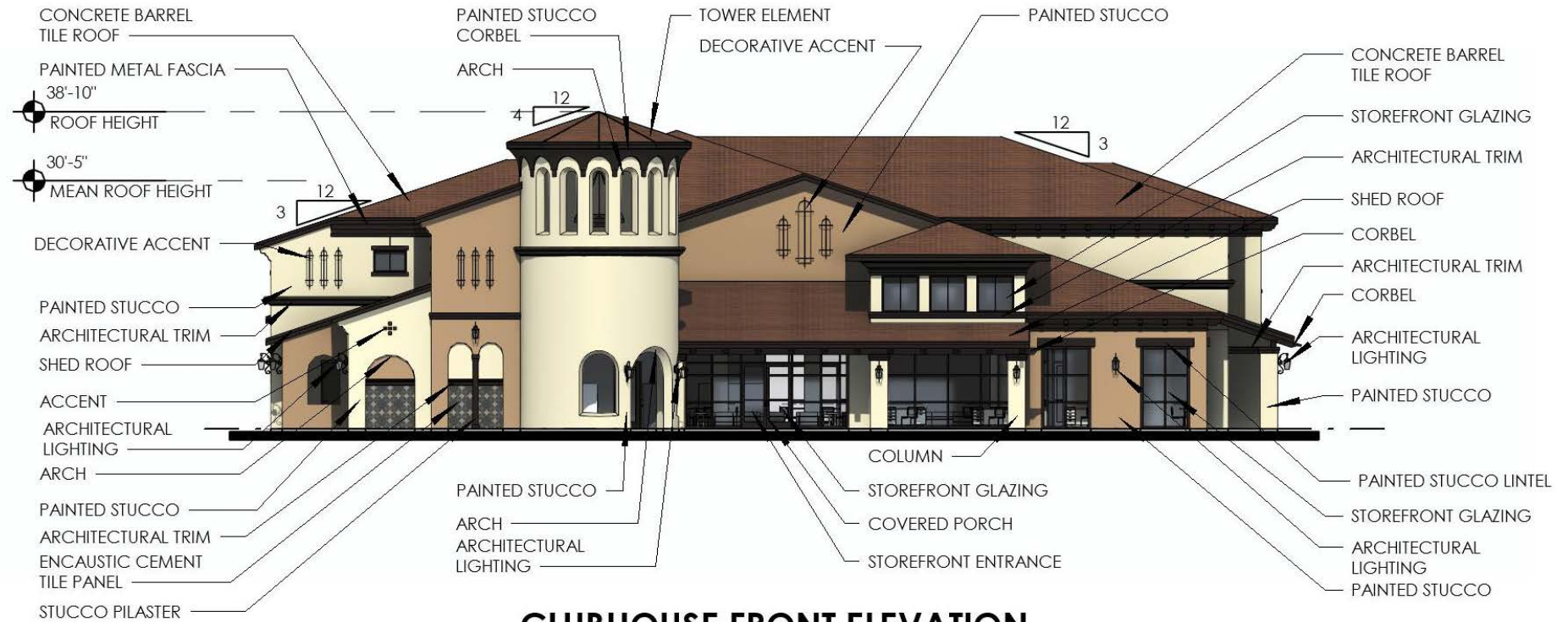
CLUBHOUSE - FLOOR PLAN



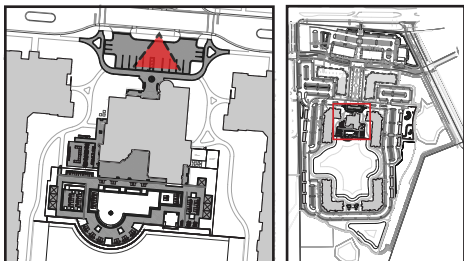
FIRST FLOOR - CLUBHOUSE



CLUBHOUSE - ELEVATION



CLUBHOUSE FRONT ELEVATION



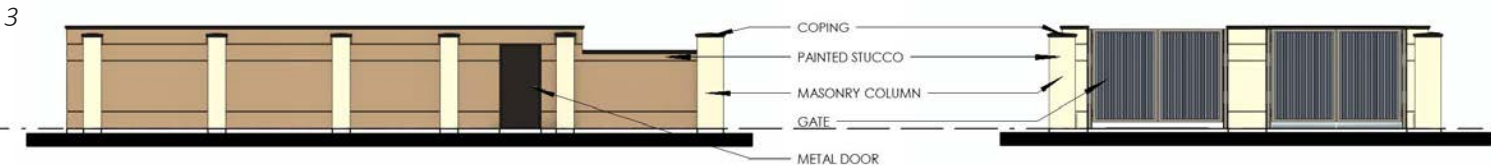
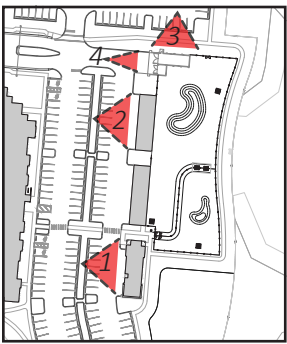
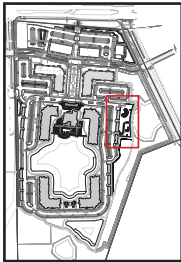
ACCESSORY BUILDINGS



MAINTENANCE BUILDING - FRONT ELEVATION



GARAGE 6 BAY - FRONT ELEVATION



TRASH COMPACTOR - FRONT ELEVATION



TRASH COMPACTOR - RIGHT ELEVATION