



Misc. Professional Services

EC 2020-32

STA No. 09

Project Name: Estero Water Monitoring

Consultant: Johnson Engineering, Inc.

Village of Estero Contract No.: EC2020-32

Village of Estero Account Number: 5373105

Brief Description: Johnson Engineering will assist the Village in monitoring water quality, water levels, and water flows throughout Estero.

Total Fees: \$83,780

The Consultant shall perform the services outlined in the attached Exhibit A – Scope of Services for the Fees identified in Exhibit B – Fees, under the terms and conditions outlined in the above referenced Village of Estero Contract No. EC2020-32.

Consultant: Johnson Engineering Inc.

By: _____

Name: _____

Title: _____

Date: _____

Village of Estero

By: _____

Name: Steve Sarkozy

Title: Village Manager

Date: _____

Attachments:

Exhibit A/B – Scope of Services & Fees

Exhibit A/B

CN 2020-01 MISCELLANEOUS PROFESSIONAL

SERVICES STATEMENT OF WORK

FOR: STA-09 – WATER QUALITY MONITORING ASSISTANCE 2021-2022

A. PROJECT OVERVIEW

Johnson Engineering, Inc. (“CONSULTANT”) shall provide water monitoring assistance to The Village of Estero (Village). The Village desires to implement a water resource monitoring program. The program will improve the Village’s understanding of its water resources. The data can be used to help guide future actions/programs by the Village. The water quality parameters follow those measured by Lee County to allow direct comparisons.

B. SCOPE OF SERVICES

TASK 1: Monthly Water Quality and Flow Monitoring

CONSULTANT will conduct monthly surface water sampling at five (5) water quality monitoring locations shown on the attached Water Quality Monitoring Location Map from October 1, 2021, through September 30, 2022. The sampling will be conducted as near to the day Lee County will be sampling nearby locations. Sampling will be conducted at each location where water is at least a foot deep. One (1) field blank sample will also be collected each quarter. CONSULTANT will record field measurements of temperature, pH, specific conductance, dissolved oxygen, and turbidity at each location. CONSULTANT will collect the samples in accordance with proper Florida Department of Environmental Protection (FDEP) Standard Operating Procedures (SOP). CONSULTANT will prepare a Chain-Of-Custody (COC) for the samples and deliver them to a state certified laboratory following proper COC procedures in adherence to established hold times. The samples will be laboratory analyzed for bacteria, nutrients, metals, and other parameters. Velocity measurements will be recorded at each sample location where applicable. In addition, CONSULTANT will record surface water velocity, water depth, and channel area as needed to calculate flow at four (4) sites labeled on the attached Flow Monitoring Location Map. Velocity and depth at the HC@WR site will be recorded hourly by a Doppler flowmeter installed in a culvert below the bridge, which will be downloaded as part of this task.

TASK 2: Quarterly Surface Water Level Downloading

Each quarter, the CONSULTANT will download the seven (7) surface water monitor wells shown on the attached Water Level Monitoring Location map. CONSULTANT will also download the BaroTroll as part of this task. Flow data from two (2) United States Geological Society (USGS) sites shown on the Flow Monitoring Location Map will be downloaded from USGS. Water level, flow, and water quality data from Lee County sites in Village will be downloaded from Lee County. CONSULTANT will manage and prepare charts of the data in Excel quarterly.

TASK 3: Annual Water Monitoring Report

CONSULTANT will prepare a short monitoring report covering data collected from October 2021 through September 2022. The report will summarize the data collected using tables and charts. It will also provide a comparison of the Village water quality data to the nearby Lee County water quality data. The report will be provided on or before December 1, 2022.

C. SCHEDULE

Upon notice to proceed by Village, monitoring will be for the period beginning October 1, 2021 through September 30, 2022.

D. COMPENSATION

The fees for Task 1 through 3 will be Lump Sum and the Subconsultant will be billed on a Time & Materials basis. Total not to exceed \$77,980.00 and based upon the Consultant's Hourly Rate Sheet incorporated into Exhibit B attached hereto.

For services provided and performed by CONSULTANT for providing and performing the Task(s) set forth and enumerated in Exhibit A entitled "Scope of Services", the OWNER shall compensate the CONSULTANT as follows:

TASK	ITEM	AMOUNT (Estimated if T&M)	FEE TYPE (LS; T&M)
1	Monthly Water Quality and Flow Monitoring (October 2021 through Sept 2022)*	\$35,460.00	LS
2	Quarterly Surface Water Level Download (4 quarters)**	\$ 8,620.00	LS
3	Annual Report (1 year)	\$ 5,420.00	LS
TOTAL COMPENSATION FOR CONSULTANT'S SERVICES:		\$49,500.00	LS

* to be billed at \$2,955 per month

** to be billed at \$2155 per quarter

For services of CONSULTANT's Sub-Consultants engaged to perform or furnish services, the OWNER shall compensate the CONSULTANT as follows:

TASK	SUB-CONSULTANT	AMOUNT (Estimated if T&M)	FEE TYPE (LS; T&M)
SUB	Cost for lab analysis of the samples is estimated at \$563 per sample x (5 samples for 12 monthly events Including quarterly field blanks)***	\$33,780.00	T&M
TOTAL COMPENSATION FOR SUB-CONSULTANT'S SERVICES:		\$33,780.00	T&M

*** Estimated at \$2,815.00 per month

TOTAL COMPENSATION, INCLUDING SUB-CONSULTANTS:	\$83,280.00	LS; T&M
---	--------------------	--------------------



**PROFESSIONAL SERVICES
HOURLY RATE SCHEDULE
July 13, 2021**

Professional

9	\$250
8	\$230
7	\$210
6	\$190
5	\$165
4	\$150
3	\$140
2	\$120
1	\$110

Technician

6	\$155
5	\$130
4	\$110
3	\$95
2	\$75
1	\$65

Administrative

3	\$90
2	\$80
1	\$65

Field Crew

4-Person	\$220
3-Person	\$190
2-Person	\$150

Field Equipment

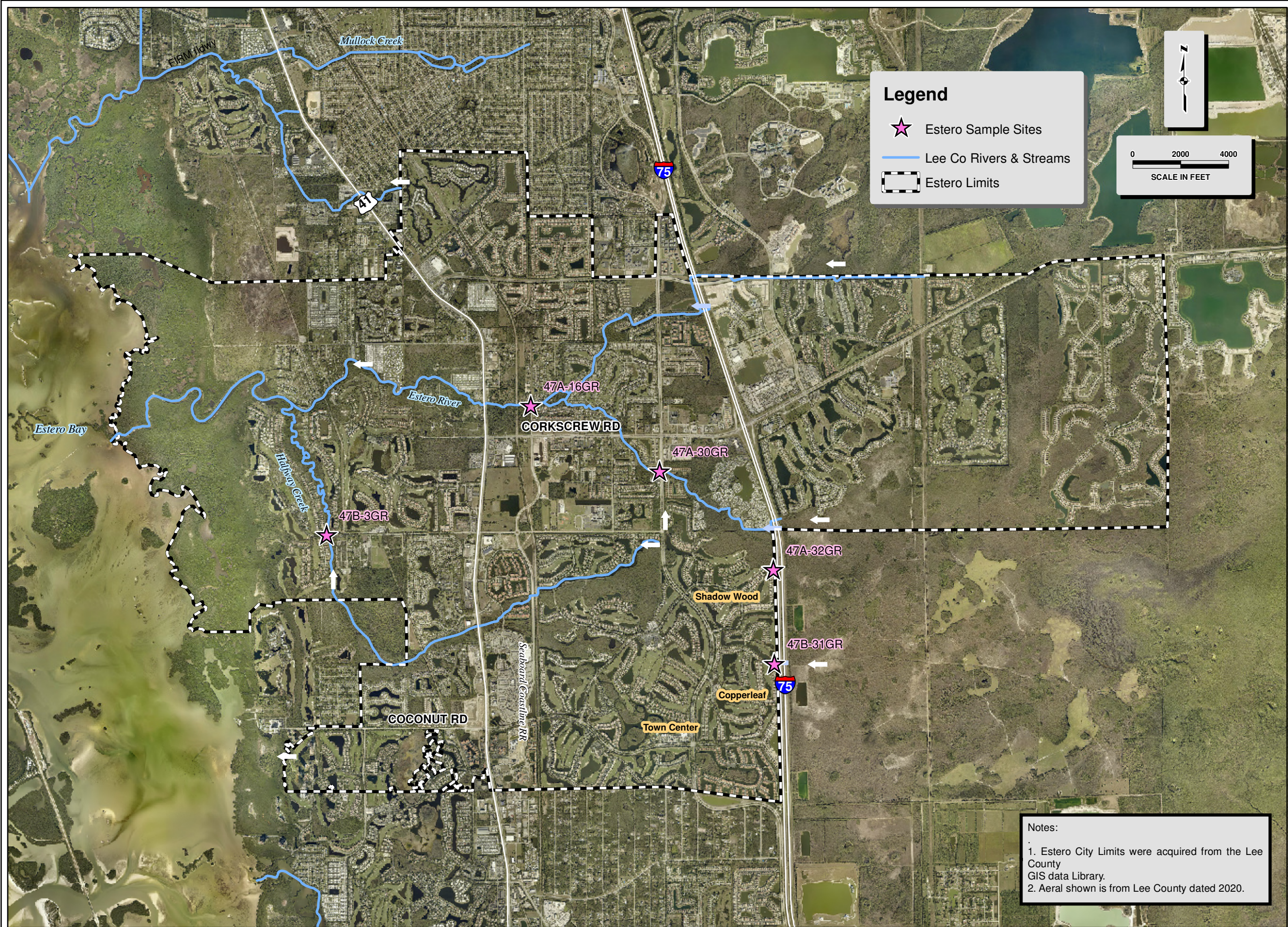
Field Equipment on Separate Schedule

Expert Witness \$300

**Reimbursable Expenses
and Sub-Consultants** Cost + 10%

**Construction Engineering and Inspection
(CEI Services)**

CEI Services Manager	\$175
CEI Senior Project Administrator	\$155
CEI Project Administrator	\$140
Contract Support Specialist	\$120
Senior Inspector	\$110
CEI Inspector III	\$100
CEI Inspector II	\$90
CEI Inspector I	\$80
Compliance Specialist	\$90
CEI Inspector's Aide	\$65



Legend

- ★ Estero Sample Sites
- Lee Co Rivers & Streams
- - - Estero Limits

0 2000 4000
SCALE IN FEET

JOHNSON ENGINEERING
 JOHNSON ENGINEERING, INC.
 2122 JOHNSON STREET
 P.O. BOX 1550
 FORT MYERS, FLORIDA 33902-1550
 PHONE (239) 334-0046
 FAX (239) 334-3661
 E.B. #642 & L.B. #642



WATER QUALITY MONITORING
VILLAGE OF ESTERO

NO.	DESCRIPTION	DATE

DATE: September 2020
 PROJECT NO.: 20203178-002
 FILE NO.: 00-00-00
 SCALE: As Shown

Notes:

1. Estero City Limits were acquired from the Lee County GIS data Library.
2. Aerial shown is from Lee County dated 2020.

WATER QUALITY MONITORING LOCATION MAP

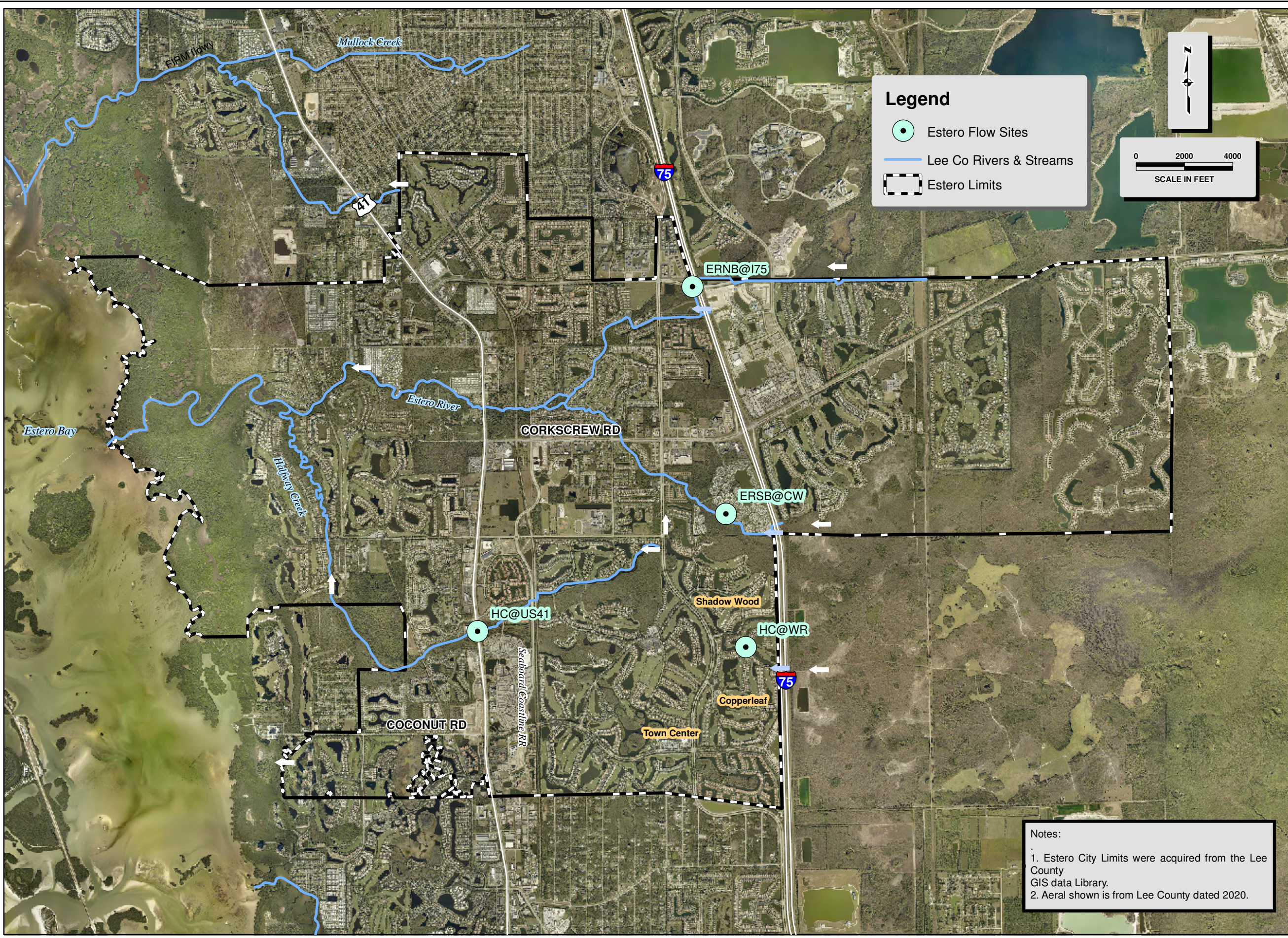


**FLOW MONITORING
 VILLAGE OF ESTERO**

NO.	DESCRIPTION	DATE

DATE: September 2020
 PROJECT NO.: 20203178-002
 FILE NO.: 00-00-00
 SCALE: As Shown

**FLOW MONITORING
 LOCATION MAP**



Legend

- Estero Flow Sites
- Lee Co Rivers & Streams
- - - Estero Limits

0 2000 4000
 SCALE IN FEET

Notes:
 1. Estero City Limits were acquired from the Lee County GIS data Library.
 2. Aerial shown is from Lee County dated 2020.

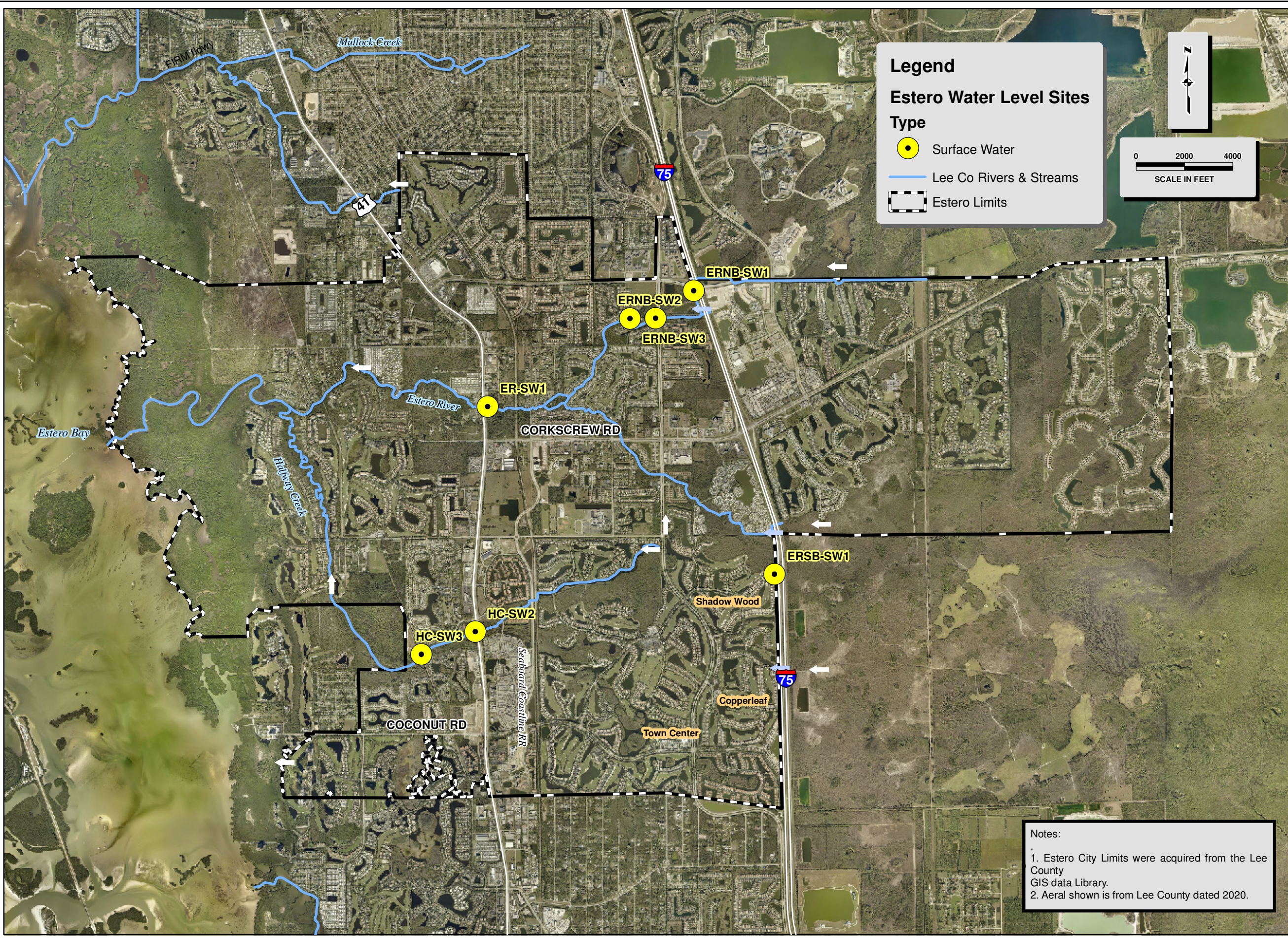


WATER LEVEL MONITORING
VILLAGE OF ESTERO

NO.	DESCRIPTION	DATE

DATE: September 2020
 PROJECT NO.: 20203178-002
 FILE NO.: 00-00-00
 SCALE: As Shown

WATER LEVEL MONITORING LOCATION MAP



Legend

Estero Water Level Sites

Type

- Surface Water
- Lee Co Rivers & Streams
- Estero Limits

N

0 2000 4000

SCALE IN FEET

Notes:

1. Estero City Limits were acquired from the Lee County GIS data Library.
2. Aerial shown is from Lee County dated 2020.