

# Abbiati *Emergency* Dental Office Building

---

VILLAGE OF ESTERO, FLORIDA

WORKSHOP

JANUARY 11, 2022



# The Team

Brent Addison, P.E. – Banks Engineering

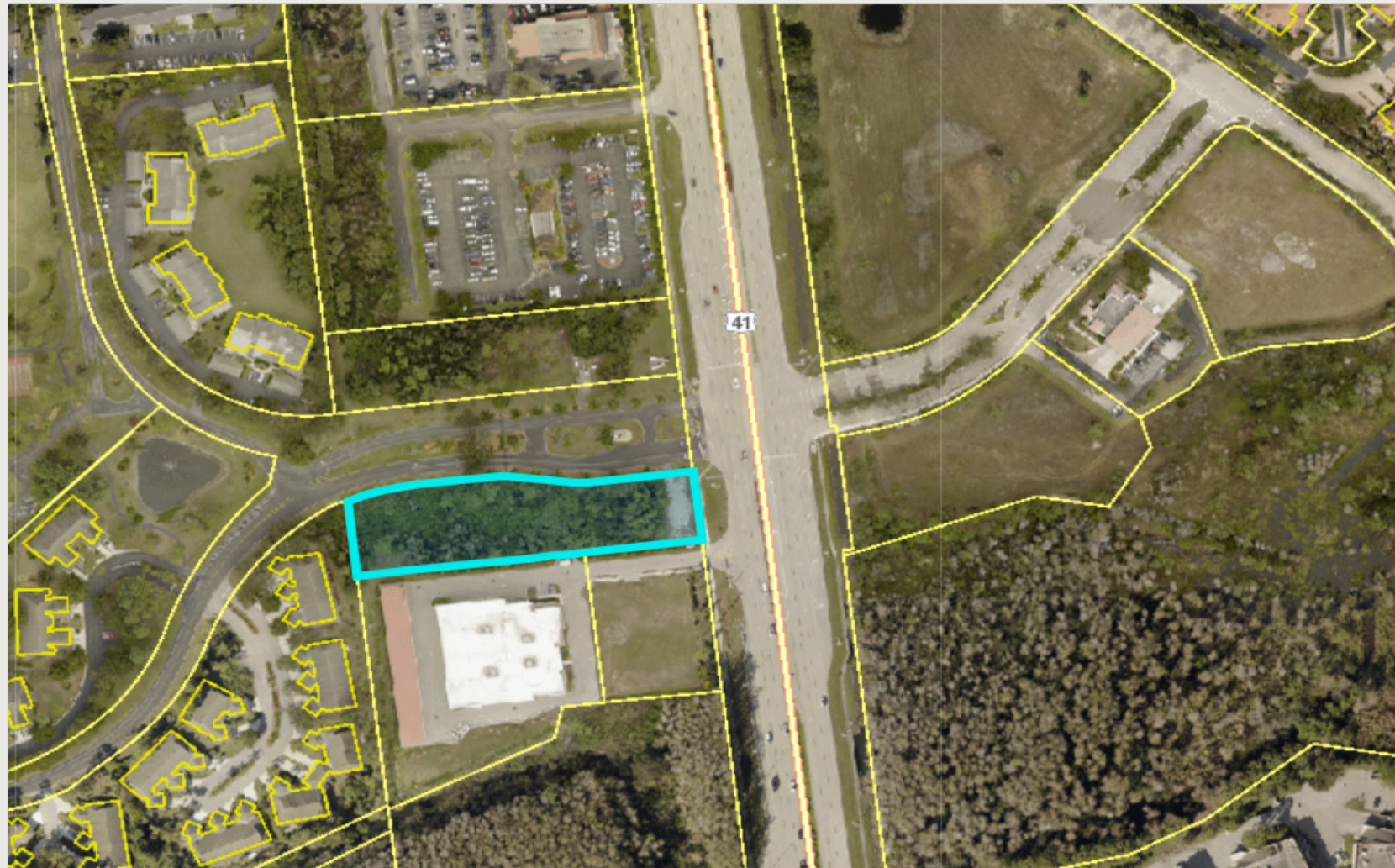
Michael K. Sheeley, AIA – MK Architecture





# Site Location

On the SW corner of U.S. 41  
and Fountain Lakes Blvd.



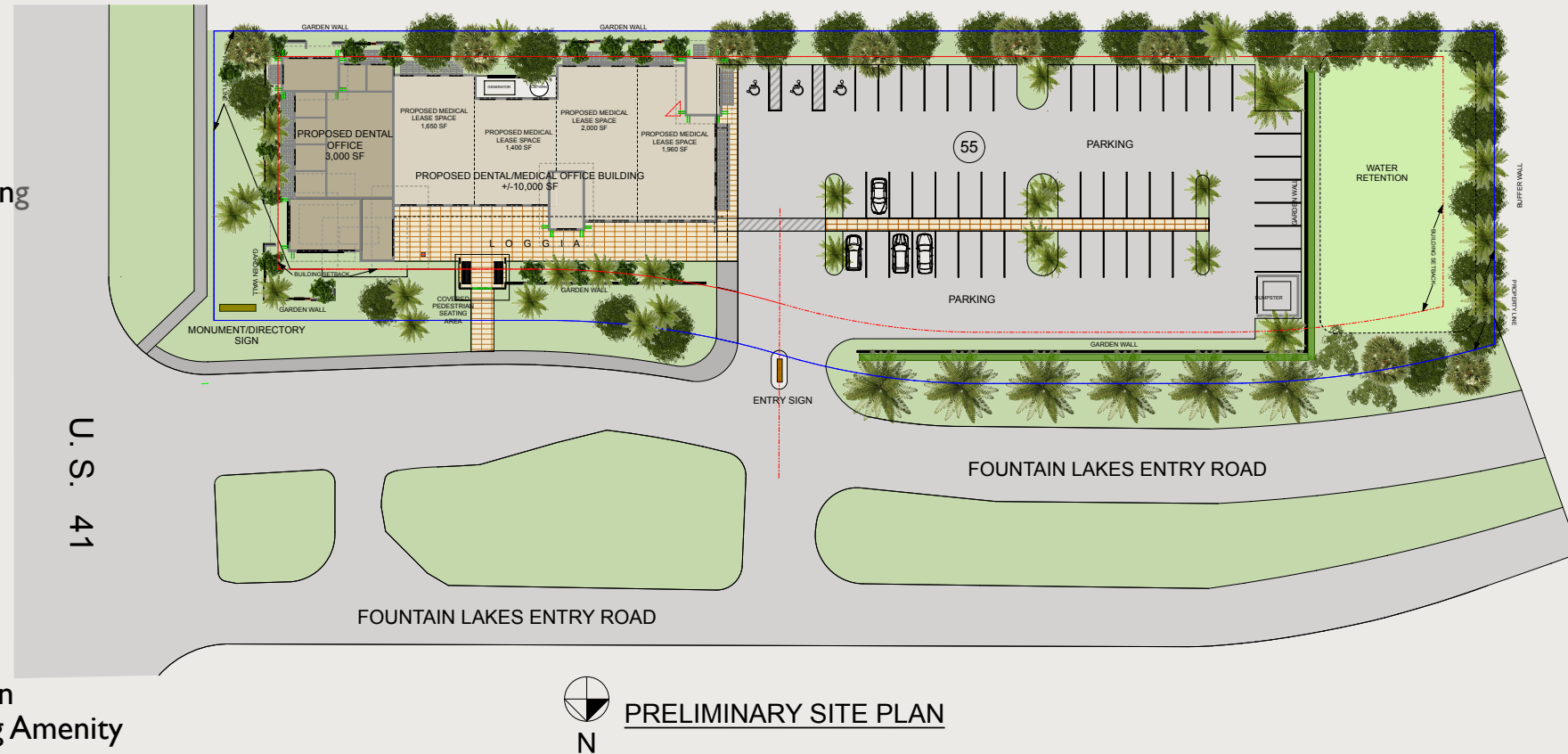


# Existing Conditions



# Zoning MCP Overview

- Parcel 1.45 +/- acres
- Construct:
  - 10,000 sq.ft. +/- Dental/Medical Office Building (maximum 20,000 sq.ft.)
  - 400 sq. ft. of Public Seating Amenity
  - Paving Grading and Drainage
  - Utility Connections to Lee County Utilities
- 25' setback from U.S. 41
- 20' setback from Fountain Lakes Boulevard
- 10' side setback
- 20' rear setback
- Type C buffer/wall to west (Fountain Lakes)
- Type D buffer on U.S. 41
- Pedestrian sidewalk extension along Fountain Lakes Blvd. to driveway and to Public Seating Amenity



# THE ARCHITECTURE

## PROPOSED LIST OF GREEN AND SUSTAINABLE BUILDING FEATURES:

1. TELS A SOLAR ROOF AND POWERWALL STORAGE SYSTEM
2. RAINWATER HARVESTING AND CISTERN FOR LANDSCAPE WATERING
3. BUILDING HEAT SINKS WITH AUTOMATED VENTILATION SYSTEM
4. USE OF VRFA/C SYSTEM
5. GREEN-WALL PASSIVE INSULATION WHERE POSSIBLE
6. WHOLE BUILDING ENERGY INTEGRATION SYSTEM
7. LOCALLY SOURCED BUILDING MATERIALS
8. MAXIMIZED DAYLIGHTING
9. ELECTRIC VEHICLE CHARGING STATION(S)
10. USE OF METAL INTERIOR WALL FRAMING
11. USE OF FSC WOOD FOR FINISHES
12. INSULATED, LOW-E IMPACT RESISTANT WINDOWS AND DOORS
13. LARGE OVERHANGS AND SOLAR SHADES
14. RECYCLED MATERIALS WHERE POSSIBLE





# THE ARCHITECTURE

## *Prairie Style:*

*Prairie: The Prairie style includes low-pitched hipped or flat roofs; broad overhanging eaves; strong horizontal lines; clerestory windows arranged in horizontal bands; wide use of natural materials, especially stone and wood or wood-look alternative with strong horizontal lines; and restrained ornamentation such as friezes around windows and doors, or as bands under the eaves.*

### *Estero Land Development Code*

*Prairie buildings are, as Frank Lloyd Wright said, “married to the ground.” They celebrate the long, low landscape of the Midwest. Their most defining characteristic is their emphasis on the horizontal rather than the vertical. They spread out over their lots, featuring flat or shallow hipped roof lines, rows of windows, overhanging eaves and bands of stone, wood or brick across the surface. Prairie buildings often include:*

- Strong geometry and massing, including large central “chimneys”*
- Stone or stucco exteriors*
- Connected indoor and outdoor spaces*
- Restrained use of applied ornamentation*





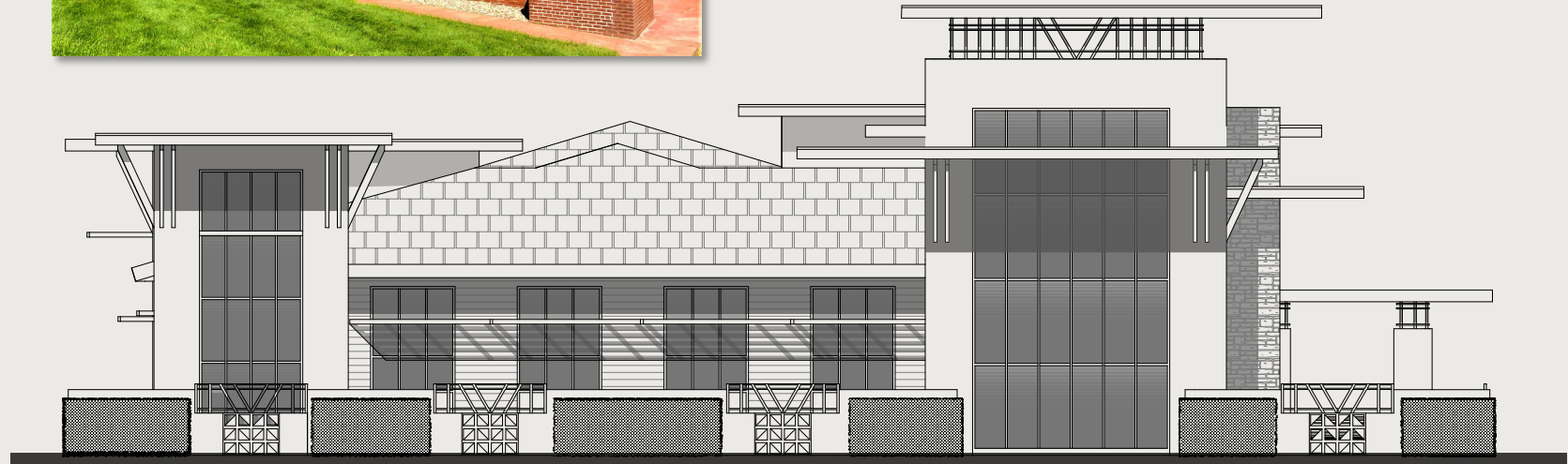
# THE ARCHITECTURE

## *Prairie Style Examples*





# THE ARCHITECTURE

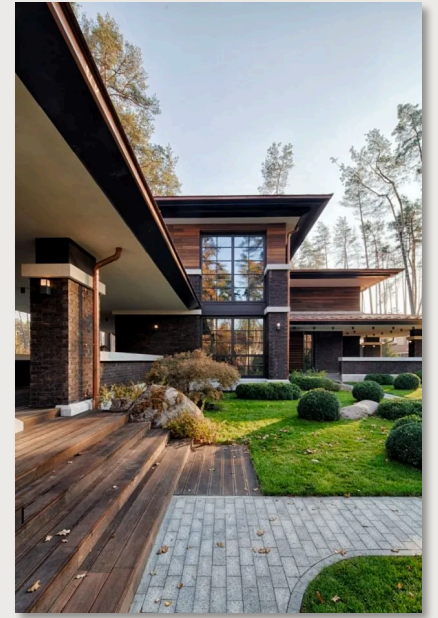


EAST ELEVATION





# THE ARCHITECTURE



NORTH ELEVATION



# THE ARCHITECTURE



View from the North





# THE ARCHITECTURE



# THE ARCHITECTURE



View from East looking West at Entry





# THE ARCHITECTURE



Aerial View from the Northeast





# THE ARCHITECTURE



View from the Northeast Corner





# THE ARCHITECTURE



View from the South





# THE ARCHITECTURE

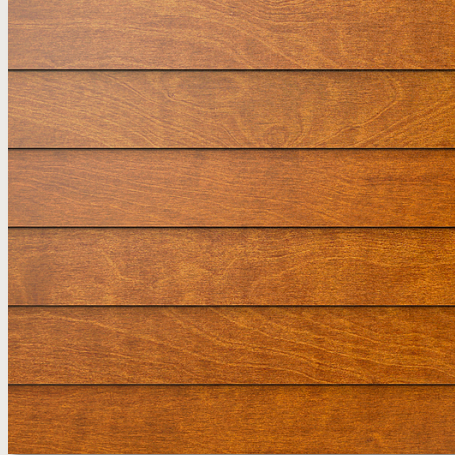




# THE COLOR PALLETTE



STONE VENEER



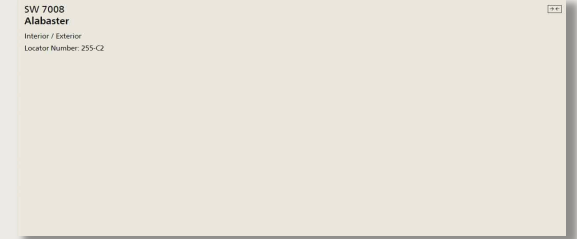
WOOD SIDING COLORS



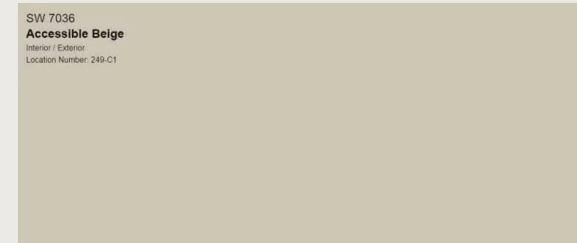
MED. BRONZE WINDOW  
FRAMES AND SUNSHADES



TESLA SOLAR ROOF



MAIN BODY COLOR



GARDEN WALL COLOR



GARDENWALL  
BREEZE BLOCK



# QUESTIONS?

