

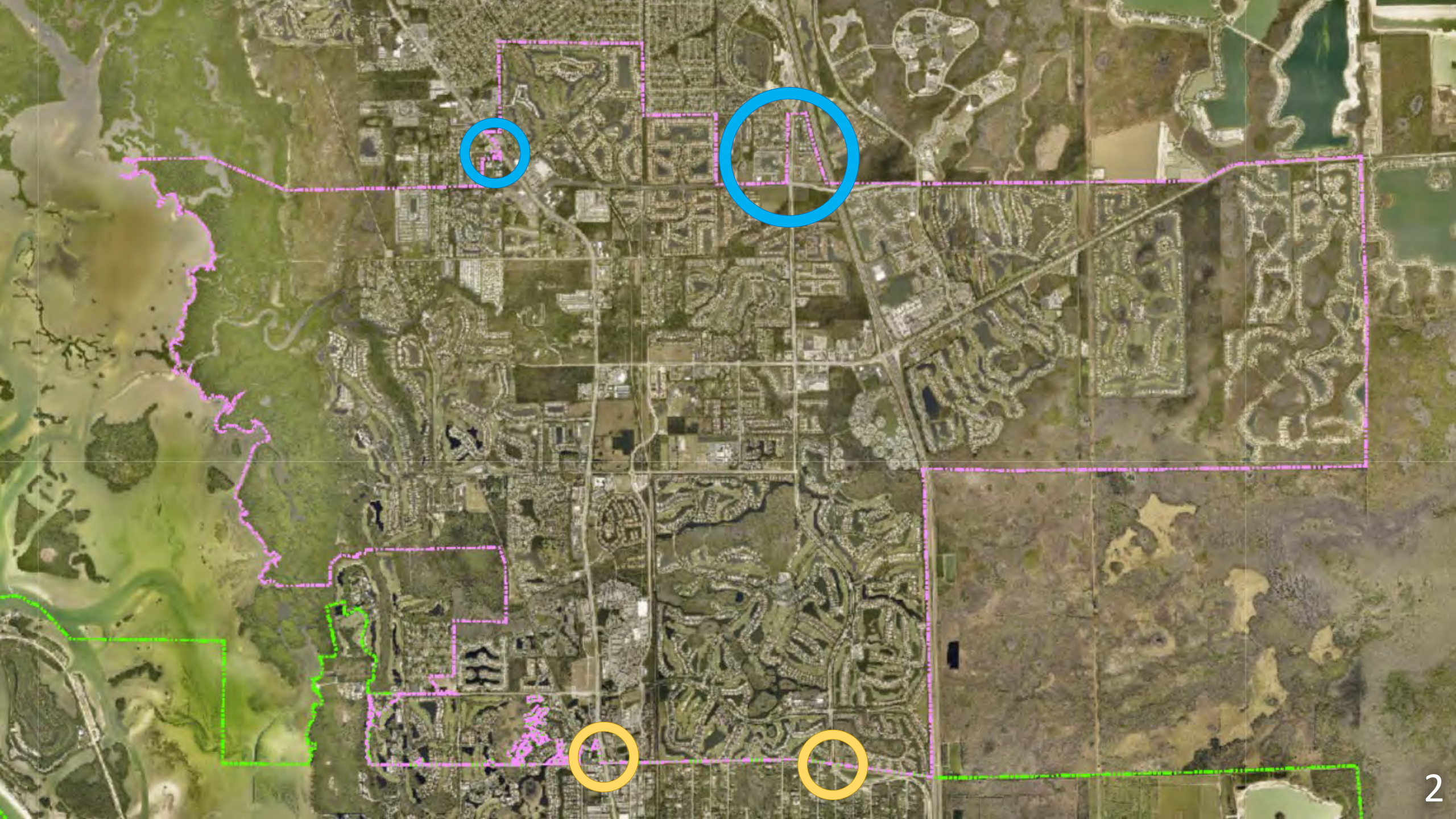


# US 41 & Three Oaks Parkway Northern Monument Sign Conceptual Locations

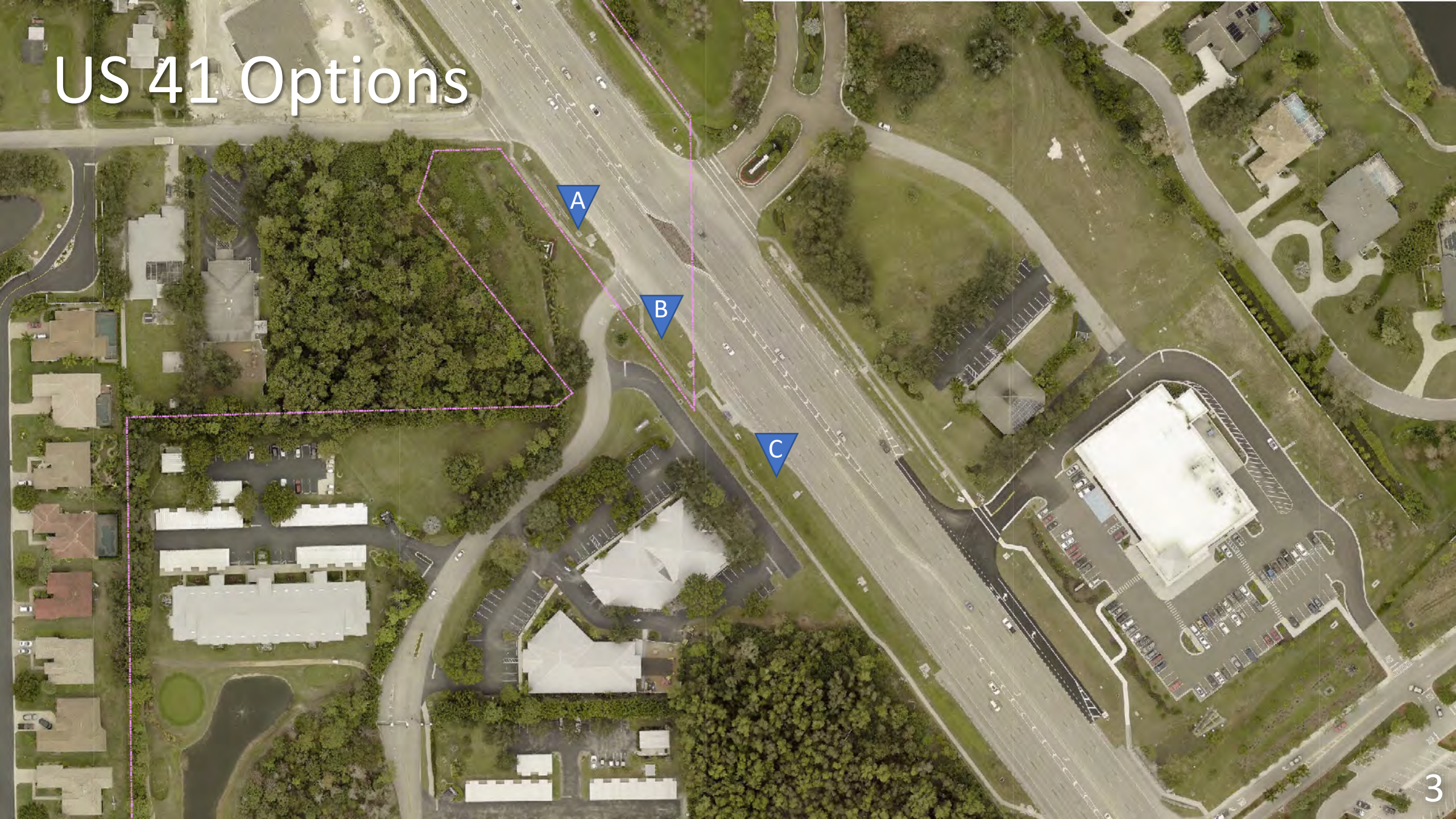
Prepared By: Paul Benvie, PE



April 6, 2022



# US 41 Options



A

B

C

# Option A



# Option A



# Option A



# Option B



# Option B





# Option B



ADOPT-A-HIGHWAY  
US 90  
US 90

Village of  
**ESTERO**

1993  
**G**  
Gulf Professional  
Center  
North-Central & Specialty  
STATE PEDIATRIC  
Florida Children's  
DERMATOLOGY  
Milestone's  
Preschool Infant & Toddler

AVAILABLE  
Commercial  
Property  
Specialists  
Call Bob Williams  
305-885-1111

# Option C



# Option C



# Option C



# US 41 Options

## Pros

- Furthest north

## Cons

- Sight line issues
- Competes with Breckenridge sign
- Utility and drainage conflicts

A

## Pros

- Near Village line
- No site line issues
- At leading edge of existing landscaping

## Cons

- Utility and drainage conflicts

B

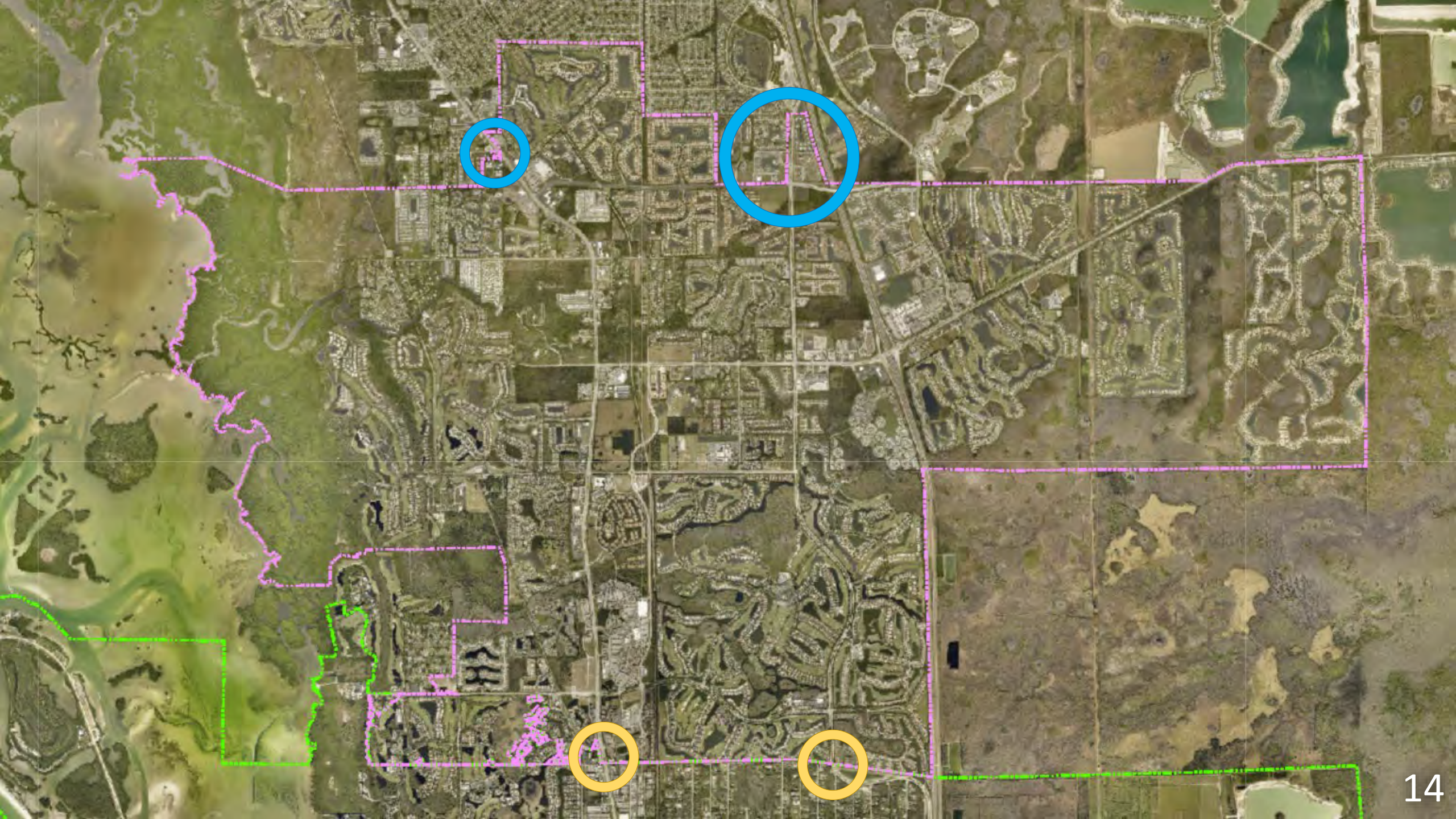
## Pros

- Away from driveways

## Cons

- Well past the Village boundary
- Could get lost behind bus stopes
- In middle of existing landscaping
- Utility and drainage conflicts

C



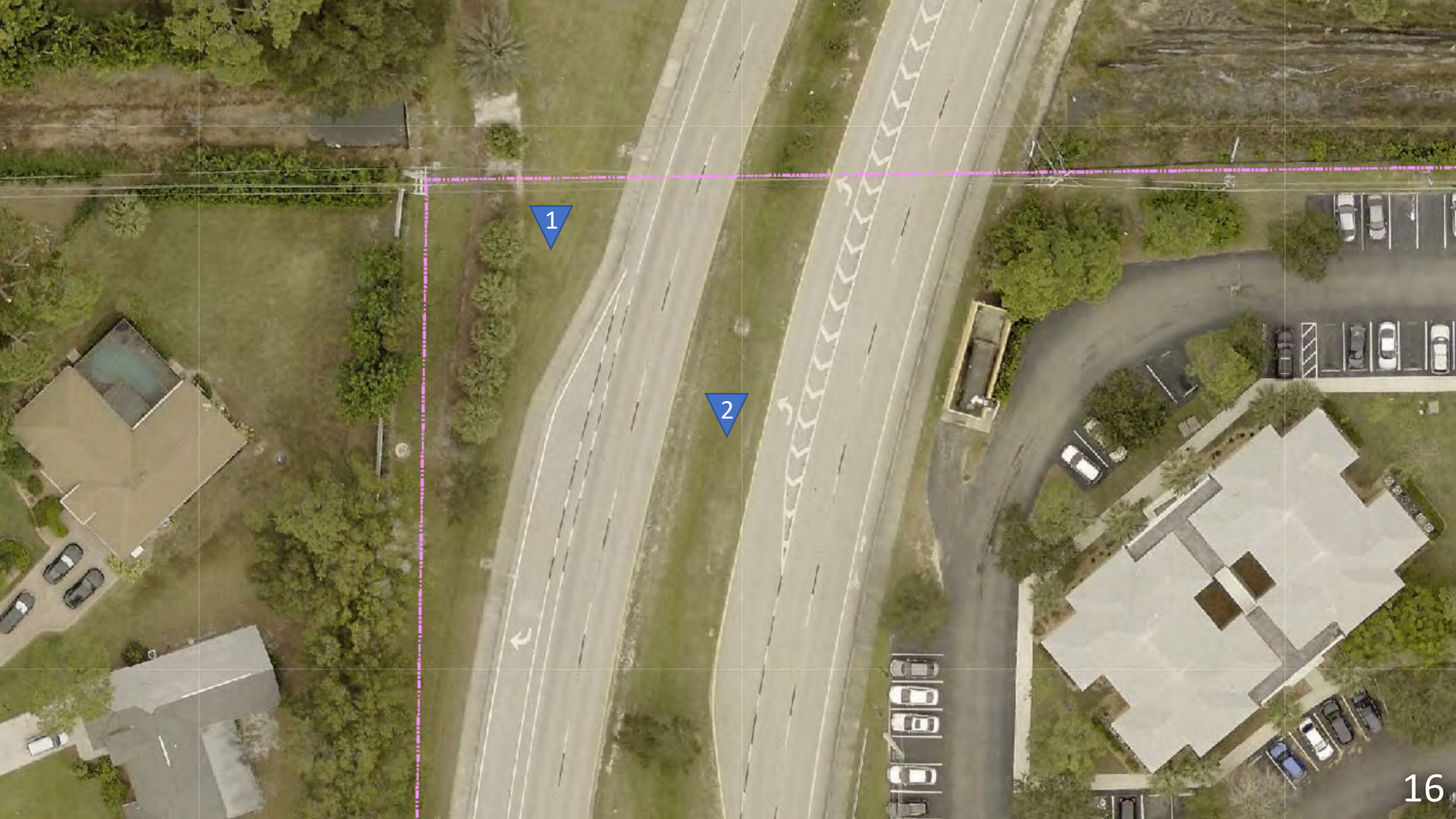
Three Oaks  
Elementary  
School

1

2

3

4



1

2



# Option 1



# Option 1



# Option 1



# Option 2



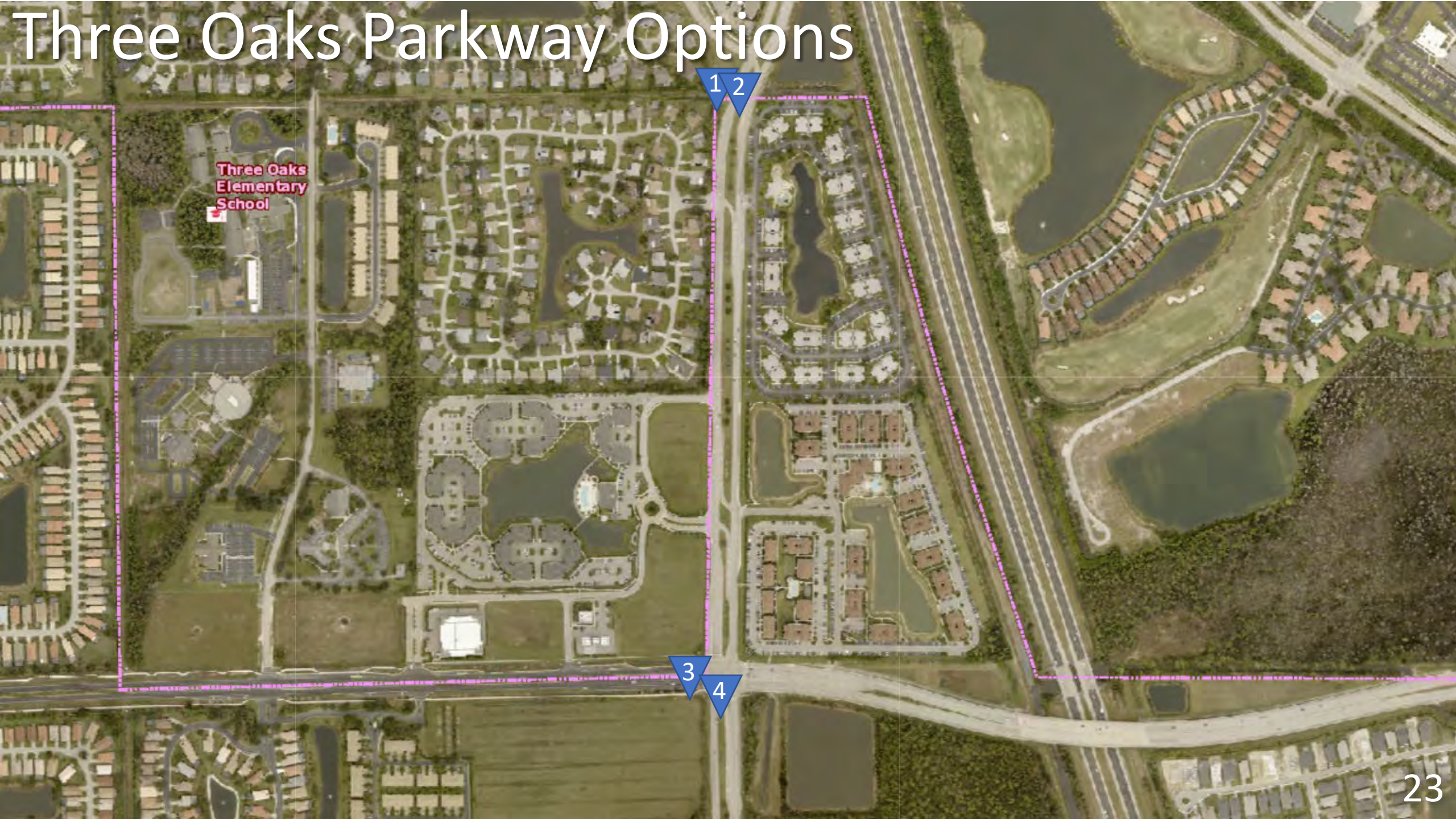
# Option 2



# Option 2



# Three Oaks Parkway Options



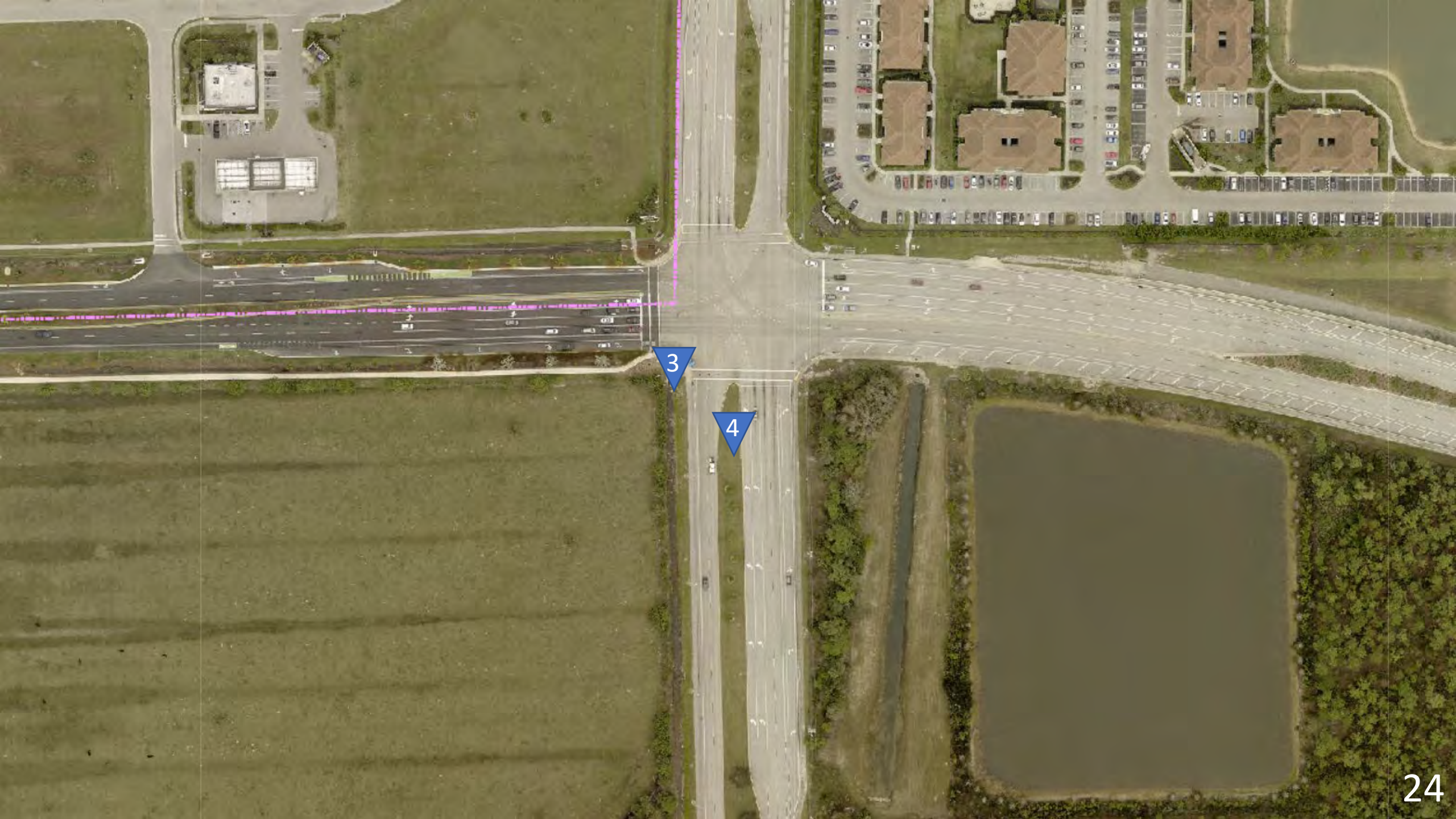
Three Oaks  
Elementary  
School

1

2

3

4



3

4



# Option 3



# Option 3



# Option 3



# Option 4



# Option 4



# Option 4



# Three Oaks Parkway Options

## Pros

- Good vehicle approach angle

## Cons

- Country Oaks is not within Village limits
- Competes with street light in front and powerlines overhead

## Pros

- Prominent corner location
- Removal of handrail

## Cons

- Would not mark Village limits of East side of Three Oaks Pkwy
- Competes with existing pedestrian signals
- Conflict with potential future development plans of vacant parcel.

## Pros

- Median location similar to Three Oaks Parkway at southern Village limit

## Cons

- Country Oaks is not within Village limits
- Existing trees and vehicle approach angle may obscure view
- Adjacent to Coastal Village dumpster
- Overhead power lines as sign is approached

## Pros

- Median location similar to Three Oaks Parkway at southern Village limit
- Existing landscaping behind it

## Cons

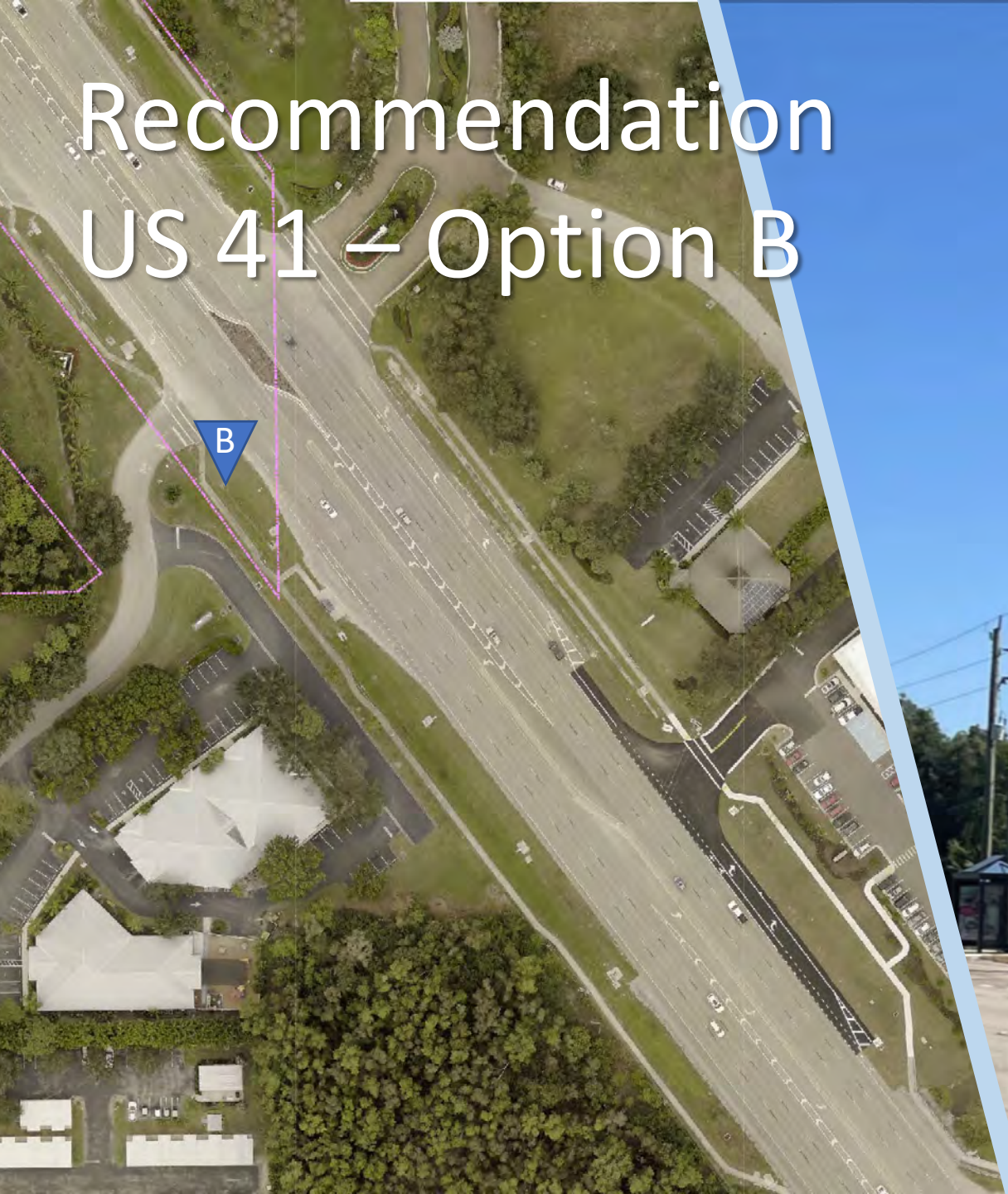
- Would not mark Village limits at East side of Three Oaks Parkway
- Would need to be set back from intersection

# Recommendation Three Oaks Parkway – Option 4





# Recommendation US 41 – Option B





Village of  
**ESTERO**

 **DRMP**