

RIVERCREEK - PHASE ONE

INSTRUMENT# _____

SHEET 1 OF 18

A SUBDIVISION LYING IN
SECTIONS 19, 30, AND 31, TOWNSHIP 46 SOUTH, RANGE 26 EAST,
 VILLAGE OF ESTERO, LEE COUNTY, FLORIDA

DEDICATIONS/RESERVATIONS

STATE OF FLORIDA
 COUNTY OF LEE

KNOW ALL MEN BY THESE PRESENTS THAT LEE COUNTY HOMES ASSOCIATES IV, LLLP, A FLORIDA LIMITED LIABILITY LIMITED PARTNERSHIP (DEVELOPER), THE OWNER OF THE LANDS DESCRIBED HEREON HAS CAUSED THIS PLAT OF RIVERCREEK - PHASE ONE TO BE MADE AND DOES HEREBY:

A. DEDICATE TO RIVERCREEK HOMEOWNERS ASSOCIATION, INC., ITS SUCCESSORS OR ASSIGNS:

- TRACT "R" AS PRIVATE ROAD RIGHT-OF-WAY (R.O.W.) SUBJECT TO THE EASEMENTS DEPICTED HEREON (L.C.U.E., P.U.E., I.E., D.E., A.E.) WITH RESPONSIBILITY FOR MAINTENANCE. ROADWAY PURPOSES INCLUDE, BUT ARE NOT LIMITED TO PAVEMENT, ROADWAY DRAINAGE, BIKE LANES, SIDEWALKS AND PATHWAYS.
- TRACTS "OS1", "OS2", "OS3", "OS4", "OS5", "OS6", "OS7" AND "OS8" (OPEN SPACE), FOR THE PURPOSE OF INSTALLATION AND MAINTENANCE OF LIGHTING, LANDSCAPING, SIGNS, WALLS AND IRRIGATION, SUBJECT TO THE EASEMENTS DEPICTED HEREON, WITH RESPONSIBILITY FOR MAINTENANCE.
- TRACTS "L1", "L2", "L3", "L4", "L5", "L6", "L7", "L8", "L9" AND "L10" AS LAKES, FOR THE PURPOSE OF DRAINAGE, IRRIGATION AND STORM WATER MANAGEMENT, SUBJECT TO THE EASEMENTS DEPICTED HEREON, WITH RESPONSIBILITY FOR MAINTENANCE.
- ALL LAKE MAINTENANCE EASEMENTS (L.M.E.) AS DEPICTED HEREON, LAKE MAINTENANCE ACCESS EASEMENTS (L.M.A.E.) SUBJECT TO THE EASEMENTS DEPICTED HEREON, WITH RESPONSIBILITY FOR MAINTENANCE.
- ALL DRAINAGE EASEMENTS (D.E.), REGIONAL DRAINAGE EASEMENT (R.D.E.) AND TEMPORARY DRAINAGE EASEMENT (T.D.E.) AS DEPICTED HEREON, FOR THE PURPOSE OF CONSTRUCTION, INSTALLATION, MAINTENANCE AND OPERATION OF STORMWATER/DRAINAGE FACILITIES, WITH RESPONSIBILITY FOR MAINTENANCE.
- ALL ACCESS EASEMENTS (A.E.) AS DEPICTED HEREON, WITH RESPONSIBILITY FOR MAINTENANCE.
- ALL TEMPORARY ACCESS EASEMENTS (T.A.E.) AS DEPICTED HEREON, WITH RESPONSIBILITY FOR MAINTENANCE.
- ALL IRRIGATION EASEMENTS (I.E.) AS DEPICTED HEREON, FOR THE PURPOSE OF CONSTRUCTION, INSTALLATION, MAINTENANCE AND OPERATION OF IRRIGATION FACILITIES, WITH RESPONSIBILITY FOR MAINTENANCE.
- ALL LANDSCAPE BUFFER EASEMENTS (L.B.E.) AS DEPICTED HEREON, FOR THE PURPOSE OF CONSTRUCTION, INSTALLATION, AND MAINTENANCE OF LANDSCAPE, WITH RESPONSIBILITY FOR MAINTENANCE.
- TRACTS "P1" AND "P2", AS PRESERVATION AREAS WITH RESPONSIBILITY FOR MAINTENANCE.
- TRACT "A" FOR RECREATION PURPOSES WITH RESPONSIBILITY FOR MAINTENANCE.

B. DEDICATE PUBLIC UTILITY EASEMENTS (P.U.E.) TO ALL LICENSED OR FRANCHISED PUBLIC OR PRIVATE UTILITIES:

ALL PLATTED PUBLIC UTILITY EASEMENTS (P.U.E.) SHALL ALSO BE EASEMENTS FOR THE CONSTRUCTION, INSTALLATION, MAINTENANCE, AND OPERATION OF CABLE TELEVISION SERVICES; PROVIDED, HOWEVER, NO SUCH CONSTRUCTION, INSTALLATION, MAINTENANCE, AND OPERATION OF CABLE TELEVISION SERVICES SHALL INTERFERE WITH THE FACILITIES AND SERVICES OF AN ELECTRIC, TELEPHONE, GAS, OR OTHER PUBLIC UTILITY. IN THE EVENT A CABLE TELEVISION COMPANY DAMAGES THE FACILITIES OF A PUBLIC UTILITY, IT SHALL BE SOLELY RESPONSIBLE FOR THE DAMAGES. THIS SECTION SHALL NOT APPLY TO THOSE PRIVATE EASEMENTS GRANTED TO OR OBTAINED BY A PARTICULAR ELECTRIC, TELEPHONE, GAS, OR OTHER PUBLIC UTILITY. SUCH CONSTRUCTION, INSTALLATION, MAINTENANCE, AND OPERATION SHALL COMPLY WITH THE NATIONAL ELECTRICAL SAFETY CODE AS ADOPTED BY THE FLORIDA PUBLIC SERVICE COMMISSION.

C. DEDICATE TO LEE COUNTY, FLORIDA, ITS SUCCESSOR AND ASSIGNS:

THOSE NON-EXCLUSIVE LEE COUNTY UTILITY EASEMENTS (L.C.U.E.) AS DEPICTED HEREON, FOR THE PURPOSES OF PERFORMING AND DISCHARGING ITS DUTIES AND OBLIGATIONS TO PROVIDE POTABLE WATER AND REUSE WATER DISTRIBUTION AND SANITARY SEWER COLLECTION SERVICES.

D. RESERVE TO THE DEVELOPER, ITS SUCCESSORS AND/OR ASSIGNS:

TRACTS "F1" AND "F2". SUBJECT TO THE EASEMENTS SHOWN HEREON, WITH RESPONSIBILITY FOR MAINTENANCE.

E. DEDICATE TO ESTERO FIRE RESCUE AND LEE COUNTY:

A NON-EXCLUSIVE EMERGENCY ACCESS EASEMENT (E.A.E.) OVER AND ACROSS TRACT "R" AND ALL NON-EXCLUSIVE EMERGENCY ACCESS EASEMENTS (E.A.E.) DEPICTED HEREON, FOR THE SOLE PURPOSE OF PERMITTING EMERGENCY AND SERVICE VEHICLES THEREON, WITH NO RESPONSIBILITY FOR MAINTENANCE THEREOF.

F. DEDICATE TO FLORIDA POWER LIGHT COMPANY:

ALL FLORIDA POWER AND LIGHT EASEMENTS (F.P.L.E.) DEPICTED HEREON, FOR THE CONSTRUCTION, INSTALLATION, MAINTENANCE, AND OPERATION OF ELECTRICAL SERVICES, WITH RESPONSIBILITY FOR MAINTENANCE THEREOF.

G. DEDICATE TO VILLAGE OF ESTERO:

ALL THE PATHWAY EASEMENTS DEPICTED HEREON, FOR THE CONSTRUCTION, INSTALLATION, MAINTENANCE, AND OPERATION OF THE PATHWAY; WITH RESPONSIBILITY FOR MAINTENANCE THEREOF. 25.0' REGIONAL DRAINAGE EASEMENT (R.D.E.) WITH NO RESPONSIBILITY FOR MAINTENANCE THEREOF.

IN WITNESS WHEREOF, LEE COUNTY HOMES ASSOCIATES IV, LLLP, A FLORIDA LIMITED LIABILITY LIMITED PARTNERSHIP, HAS CAUSED THESE PRESENTS TO BE SIGNED THIS _____ DAY OF _____, 2022, A.D.

 WITNESS

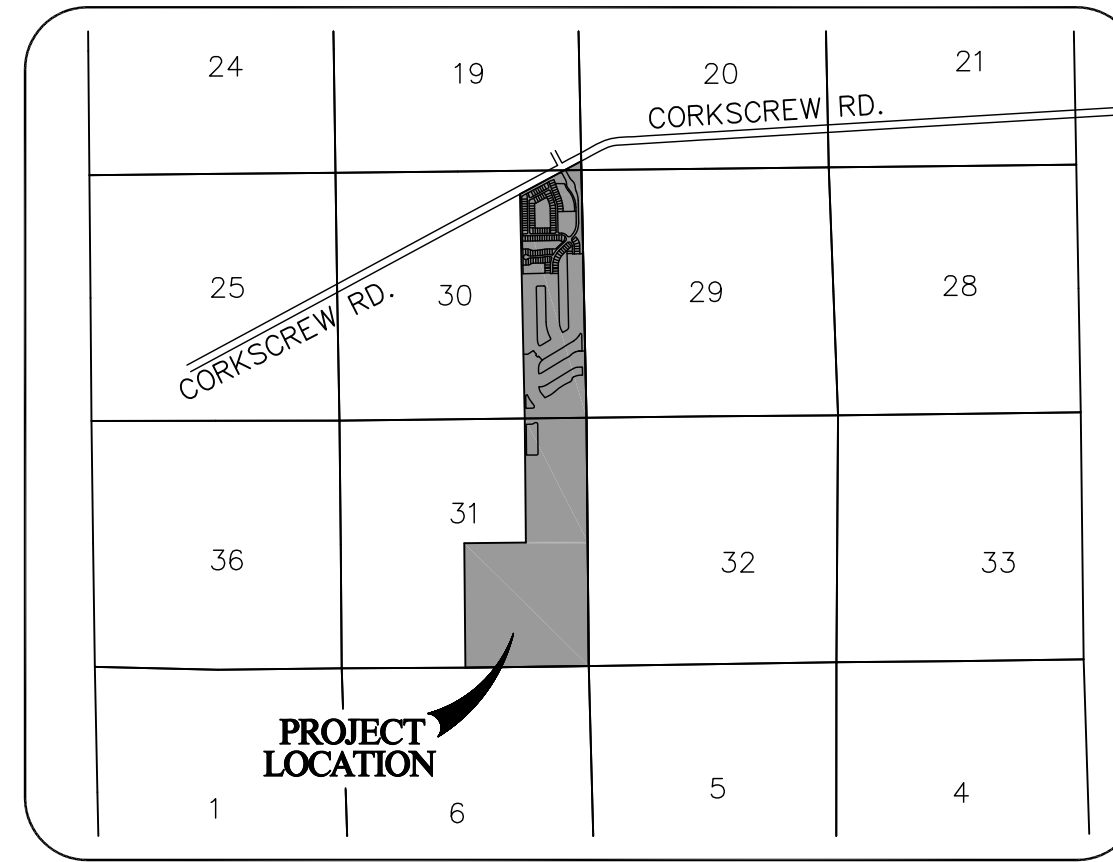
 PRINTED NAME

 WITNESS

 PRINTED NAME

 LEE COUNTY HOMES ASSOCIATES IV, LLLP,
 A FLORIDA LIMITED LIABILITY LIMITED PARTNERSHIP
 BY: LEE COUNTY HOMES IV CORPORATION,
 A FLORIDA CORPORATION, ITS GENERAL PARTNER

BY: _____
 RICHARD M. NORWALK
 VICE PRESIDENT



LOCATION MAP

LEGAL DESCRIPTION

A PARCEL OF LAND LOCATED IN SECTIONS 19, 30 AND 31, TOWNSHIP 46 SOUTH, RANGE 26 EAST, LEE COUNTY, FLORIDA BEING MORE PARTICULARLY DESCRIBED AS FOLLOWS:

BEGINNING AT THE SOUTHEAST CORNER OF SECTION 31, TOWNSHIP 46 SOUTH, RANGE 26 EAST, LEE COUNTY, FLORIDA; THENCE ALONG THE SOUTH LINE OF SAID SECTION 31 SOUTH 89°16'01" WEST, A DISTANCE OF 2,632.34 FEET TO A POINT ON THE WEST LINE OF THE SOUTHEAST QUARTER OF SECTION 31; THENCE ALONG SAID WEST LINE NORTH 00°33'14" WEST, A DISTANCE OF 2,654.44 FEET TO A POINT ON THE SOUTH LINE OF WILDCAT RUN, PLAT BOOK 36, PAGES 30 THROUGH 43, LEE COUNTY, FLORIDA; THENCE ALONG SAID SOUTH LINE NORTH 89°25'55" EAST, A DISTANCE OF 1,316.52 FEET TO THE SOUTHEAST CORNER OF WILDCAT RUN, PLAT BOOK 36, PAGES 30 THROUGH 43, LEE COUNTY, FLORIDA; THENCE ALONG THE EAST LINE OF WILDCAT RUN, PLAT BOOK 36, PAGES 30 THROUGH 43, LEE COUNTY, FLORIDA FOR THE FOLLOWING TWO (2) COURSES AND DISTANCES; NORTH 00°33'07" WEST, A DISTANCE OF 2,647.49 FEET; THENCE NORTH 01°12'26" WEST, A DISTANCE OF 4,789.01 FEET; THENCE NORTH 61°46'42" EAST, A DISTANCE OF 1,480.55 FEET TO THE NORTHWEST CORNER OF PRESERVE AT CORKSCREW, INSTRUMENT #2012000094503, LEE COUNTY, FLORIDA; THENCE ALONG THE WEST LINE OF PRESERVE AT CORKSCREW, INSTRUMENT #2012000094503, LEE COUNTY, FLORIDA SOUTH 01°10'12" EAST, A DISTANCE OF 190.04 FEET; THENCE CONTINUE ALONG SAID WEST LINE SOUTH 01°11'25" EAST, A DISTANCE OF 5284.15 FEET TO THE SOUTHWEST CORNER OF PRESERVE AT CORKSCREW, INSTRUMENT #2012000094503, LEE COUNTY, FLORIDA AND ALSO BEING THE NORTHWEST CORNER OF BELLA TERRA UNIT TWO, PLAT BOOK 81, PAGES 1 THROUGH 36, LEE COUNTY, FLORIDA; THENCE ALONG SAID WEST LINE FOR THE REMAINING COURSES AND DISTANCES SOUTH 00°32'05" EAST, A DISTANCE OF 2,649.60 FEET; THENCE SOUTH 00°32'13" EAST, A DISTANCE OF 2,646.76 FEET TO THE POINT OF BEGINNING.

CONTAINING 395.6 ACRES, MORE OR LESS.

NOTICE:

LANDS DESCRIBED IN THIS PLAT MAY BE SUBDIVIDED BY THE DEVELOPER WITHOUT THE ROADS, DRAINAGE, WATER AND SEWER FACILITIES BEING ACCEPTED FOR MAINTENANCE BY LEE COUNTY OR THE VILLAGE OF ESTERO. ANY PURCHASER OF A LOT IN THIS SUBDIVISION IS ADVISED TO DETERMINE WHETHER THE LOT MAY BE SUBJECT TO ASSESSMENT OR CALLED UPON TO BEAR A PORTION OR ALL OF THE EXPENSE OF CONSTRUCTION, MAINTENANCE, OR IMPROVEMENT OF ROADS, DRAINAGE, WATER AND SEWER FACILITIES.

CORPORATE ACKNOWLEDGEMENT

STATE OF FLORIDA
 COUNTY OF _____

THE FOREGOING DEDICATION WAS ACKNOWLEDGED BEFORE ME BY MEANS OF PHYSICAL PRESENCE OR ONLINE NOTARIZATION THIS _____ DAY OF _____, 2022, A.D., BY RICHARD M. NORWALK, AS VICE PRESIDENT OF LEE COUNTY HOMES IV CORPORATION, A FLORIDA CORPORATION, THE GENERAL PARTNER OF LEE COUNTY HOMES ASSOCIATES IV, LLLP, A FLORIDA LIMITED LIABILITY LIMITED PARTNERSHIP, ON BEHALF OF THE CORPORATION AND LIMITED PARTNERSHIP WHO IS PERSONALLY KNOWN TO ME OR WHO HAS PRODUCED _____ AS IDENTIFICATION.

 NOTARY PUBLIC SIGNATURE

 NOTARY PUBLIC PRINTED NAME

(SEAL)

NOTICE:

THIS PLAT, AS RECORDED IN ITS GRAPHIC FORM, IS THE OFFICIAL DEPICTION OF THE SUBDIVIDED LANDS DESCRIBED HEREIN AND WILL IN NO CIRCUMSTANCES BE SUPPLANTED IN AUTHORITY BY ANY OTHER GRAPHIC OR DIGITAL FORM OF THE PLAT. THERE MAY BE ADDITIONAL RESTRICTIONS THAT ARE NOT RECORDED ON THIS PLAT THAT MAY BE FOUND IN THE PUBLIC RECORDS OF THIS COUNTY.

SURVEY NOTES:

- ALL DIMENSIONS ARE IN FEET AND DECIMALS THEREOF.
- ALL LOT LINES ARE RADIAL UNLESS OTHERWISE NOTED.
- UNLESS OTHERWISE NOTED ALL CURVES ARE TANGENTIAL AND CIRCULAR.
- BEARINGS ARE BASED ON THE SOUTH RIGHT OF WAY LINE OF THE CORKSCREW ROAD C.R. 850, LEE COUNTY, FLORIDA AS BEING NORTH 61°46'42" EAST AND RELATE TO THE FLORIDA STATE PLANE COORDINATE SYSTEM FOR FLORIDA ZONE EAST, NORTH AMERICAN DATUM OF 1983, 1990 ADJUSTMENT (NADB3/90).
- EASEMENTS COLLATED WITHIN THE PLATTED UTILITY EASEMENTS SHALL BE SUBORDINATE TO THE PUBLIC UTILITY EASEMENT.

VILLAGE OF ESTERO APPROVALS

THIS PLAT IS ACCEPTED AND APPROVED BY THE VILLAGE OF ESTERO VILLAGE COUNCIL, LEE COUNTY, FLORIDA THIS _____ DAY OF _____, 2022.

 KATY ERRINGTON
 MAYOR, VILLAGE OF ESTERO

 CAROL SACCO
 VILLAGE CLERK

 BURT L. SAUNDERS
 VILLAGE ATTORNEY

 MARY GIBBS
 DIRECTOR OF
 COMMUNITY DEVELOPMENT

VILLAGE OF ESTERO SURVEYOR

REVIEW BY THE DESIGNATED VILLAGE PSM DETERMINED THAT THIS PLAT CONFORMS TO THE REQUIREMENTS OF F.S. CHAPTER 177, PART 1 OF THE FLORIDA STATUTES.

 ALLEN M. VOSE III, P.S.M. # 7191
 AS VILLAGE OF ESTERO DESIGNATED P.S.M.

CLERK OF COURT CERTIFICATION

I HEREBY CERTIFY THAT THE ATTACHED PLAT OF RIVERCREEK - PHASE ONE A SUBDIVISION LOCATED IN SECTIONS 19, 30, AND 31 TOWNSHIP 46 SOUTH, RANGE 26 EAST, LEE COUNTY, FLORIDA WAS FILED FOR RECORD AT _____ M. THIS _____ DAY OF _____, 2022 AND DULY RECORDED AS INSTRUMENT NUMBER _____ IN THE PUBLIC RECORDS OF LEE COUNTY, FLORIDA.

 LINDA DOGGETT
 CLERK OF COURT
 IN AND FOR LEE COUNTY

SURVEYOR'S CERTIFICATION

I HEREBY CERTIFY THAT THE ATTACHED PLAT OF RIVERCREEK - PHASE ONE, A SUBDIVISION LOCATED IN SECTIONS 19, 30, AND 31 TOWNSHIP 46 SOUTH, RANGE 26 EAST, LEE COUNTY, FLORIDA WAS PREPARED UNDER MY DIRECTION AND SUPERVISION AND COMPLIES WITH ALL THE SURVEY REQUIREMENTS OF CHAPTER 177, FLORIDA STATUTES. I FURTHER CERTIFY THAT THE PERMANENT REFERENCE MONUMENTS (PRM'S) HAVE BEEN PLACED AT THE LOCATIONS SHOWN ON THE PLAT.

RHODES & RHODES LAND SURVEYING, INC.
 CERTIFICATE OF AUTHORIZATION NUMBER LB 6897

DATE:

 JOHN SCOTT RHODES P.S.M. #5739
 STATE OF FLORIDA

THIS INSTRUMENT PREPARED BY:
 JOHN SCOTT RHODES, P.S.M. #5739
RHODES & RHODES
LAND SURVEYING, INC.
 28100 BONITA GRANDE DRIVE, SUITE #107
 BONITA SPRINGS, FLORIDA 34135
 (239) 405-8166 FAX NO. (239) 405-8163
 FLORIDA BUSINESS LICENSE NO. LB 6897

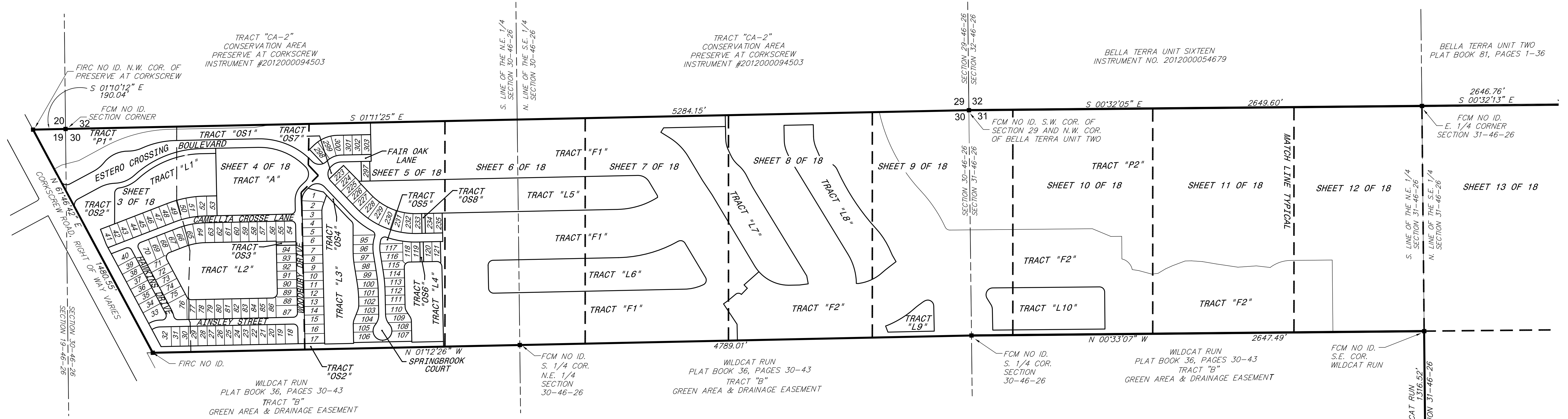
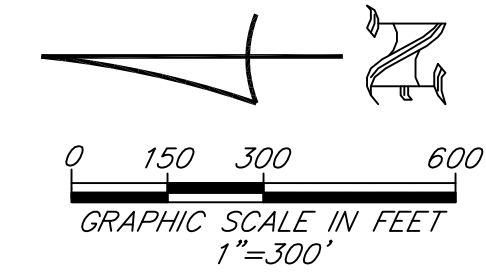
D02020-EO08 / PLT2021-E001

RIVERCREEK - PHASE ONE

A SUBDIVISION LYING IN
 SECTIONS 19, 30, AND 31, TOWNSHIP 46 SOUTH, RANGE 26 EAST,
 VILLAGE OF ESTERO, LEE COUNTY, FLORIDA

INSTRUMENT# _____

SHEET 2 OF 18
 KEYMAP

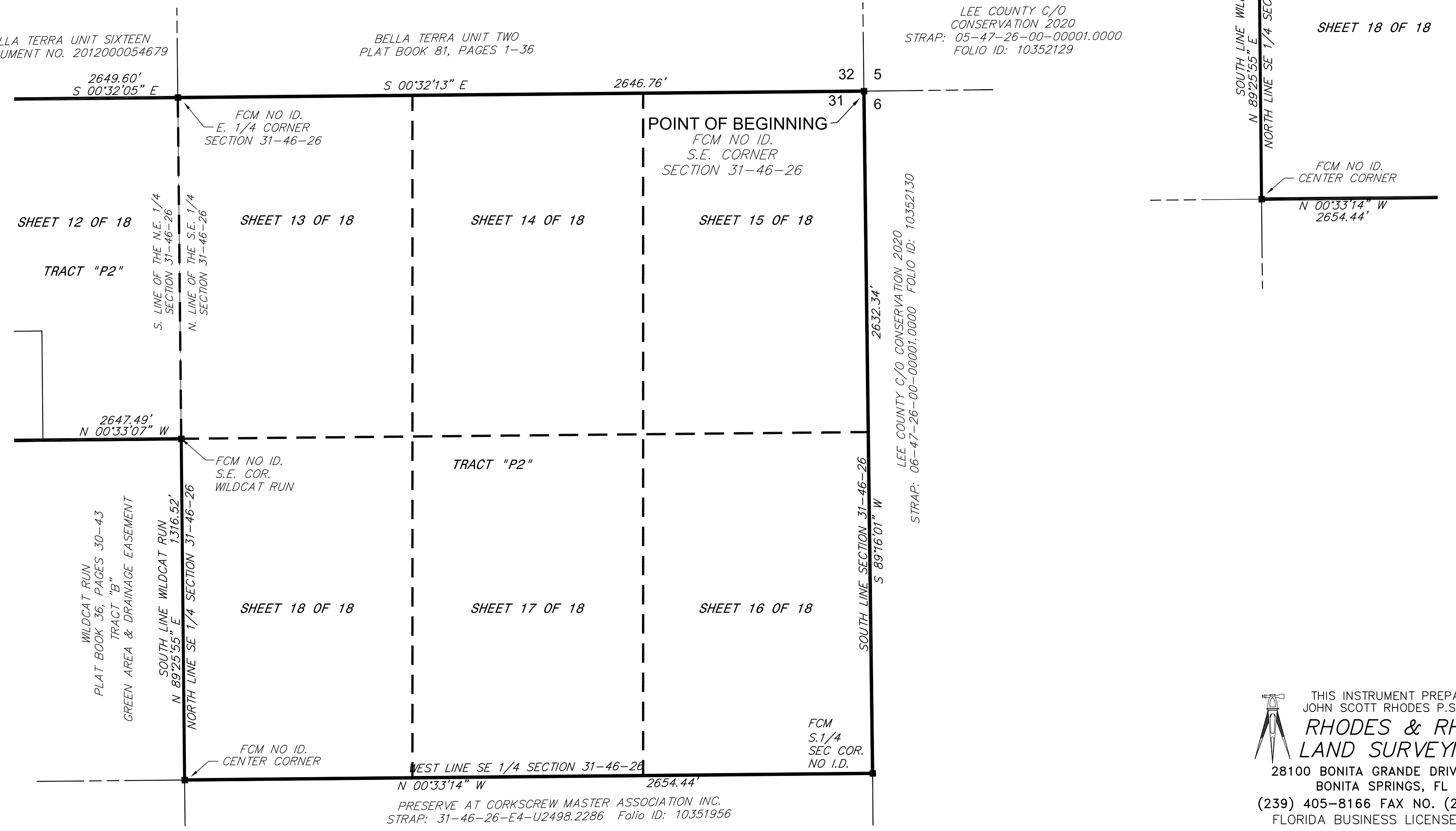


LEGEND

- AC. ACRES
- A.E. ACCESS EASEMENT
- BOB BASIS OF BEARING
- C.R. COUNTY ROAD
- D.E. DRAINAGE EASEMENT
- (E) EASEMENT TIE
- E.A.E. EMERGENCY ACCESS EASEMENT
- FCM FOUND CONCRETE MONUMENT
- FIP FOUND IRON PIPE
- FPKD FOUND PK NAIL & DISK
- F.P.L.E. FLORIDA POWER AND LIGHT EASEMENT
- ID. IDENTIFICATION
- I.E. IRRIGATION EASEMENT
- LB LICENSED BUSINESS
- L.B.E. LANDSCAPE BUFFER EASEMENT
- L.C.U.E. LEE COUNTY UTILITIES EASEMENT
- L.M.A.E. LAKE MAINTENANCE AND ACCESS EASEMENT
- L.M.E. LAKE MAINTENANCE EASEMENT
- N.R. NON-RADIAL
- O.R. OFFICIAL RECORDS BOOK
- P.C. POINT OF CURVATURE
- P.C.P. PERMANENT CONTROL POINT
- P.I. POINT OF INTERSECTION
- P.R.M. PERMANENT REFERENCE MONUMENT
- P.S.M. PROFESSIONAL SURVEYOR & MAPPER
- P.T. POINT OF TANGENT
- P.U.E. PUBLIC UTILITY EASEMENT
- R.D.E. REGIONAL DRAINAGE EASEMENT
- R.O.W. RIGHT-OF-WAY
- SEC. SECTION
- S.F. SQUARE FEET
- T.A.E. TEMPORARY ACCESS EASEMENT
- T.D.E. TEMPORARY DRAINAGE EASEMENT
- # NUMBER

SYMBOLS

- SET PERMANENT REFERENCE MONUMENT (5/8"x18" IRON ROD CAPPED "PRM LB 6897")
- FOUND PERMANENT REFERENCE MONUMENT (5/8"x18" IRON ROD CAPPED "PRM LB 6897") (UNLESS OTHERWISE NOTED)
- PERMANENT CONTROL POINT (MAGNETIC NAIL & DISK STAMPED "PCP LB 6897")
- INDICATES POINT OF INTERSECTION, POINT OF CURVATURE, POINT OF TANGENCY OR POINT OF REVERSE CURVATURE.
- ⊕ CENTERLINE OF RIGHT OF WAY
- SET WITNESS PINS 5.00' EACH WAY ON LINE AT ALL FOUND MONUMENTS (5/8"x18" IRON ROD CAPPED "WITNESS LB 6897")



D02020-E008 / PLT2021-E001

THIS INSTRUMENT PREPARED BY:
 JOHN SCOTT RHODES P.S.M. #5739
RHODES & RHODES
 LAND SURVEYING, INC.
 28100 BONITA GRANDE DRIVE, SUITE #107
 BONITA SPRINGS, FL 34135
 (239) 405-8166 FAX NO. (239) 405-8163
 FLORIDA BUSINESS LICENSE NO. LB 6897

RIVERCREEK - PHASE ONE

INSTRUMENT# _____

SHEET 3 OF 18

A SUBDIVISION LYING IN
 SECTIONS 19, 30, AND 31, TOWNSHIP 46 SOUTH, RANGE 26 EAST,
 VILLAGE OF ESTERO, LEE COUNTY, FLORIDA

CURVE TABLE				
CURVE	RADIUS	DELTA	LENGTH	CHORD
C1	40.00'	90°00'00"	62.83'	56.57'
C2	40.00'	90°00'00"	62.83'	56.57'
C3	200.00'	26°12'24"	91.48'	90.68'
C4	200.00'	22°50'18"	79.72'	79.19'
C5	180.00'	40°17'08"	126.56'	123.97'
C6	180.00'	51°00'10"	160.23'	154.99'
C7	200.00'	24°14'07"	84.60'	83.97'
C8	1000.00'	27°01'54"	471.79'	467.43'
C9	600.00'	41°06'37"	430.51'	421.33'
C10	500.00'	23°06'09"	201.61'	200.24'
C23	150.00'	29°00'06"	75.93'	75.12'
C24	25.00'	78°13'24"	34.13'	31.54'
C25	130.00'	4°44'26"	10.76'	10.75'
C26	25.00'	112°16'27"	48.99'	41.52'
C27	105.00'	27°00'52"	49.51'	49.05'
C28	125.00'	27°00'52"	58.94'	58.39'
C29	85.00'	27°00'52"	40.08'	39.71'
C30	25.00'	97°07'26"	42.38'	37.48'
C31	25.00'	82°52'34"	36.16'	33.09'
C46	480.00'	19°53'26"	166.63'	165.80'
C47	500.00'	19°53'26"	173.58'	172.71'
C48	520.00'	19°53'26"	180.52'	179.62'
C55	30.00'	62°59'08"	32.98'	31.34'
C56	30.00'	97°07'26"	50.85'	44.98'
C58	30.00'	10°10'22"	42.50'	39.04'
C59	210.00'	33°39'31"	123.36'	121.60'
C60	570.00'	41°06'37"	408.98'	400.26'
C61	636.00'	19°53'26"	220.79'	219.68'
C64	866.00'	27°16'58"	412.37'	408.48'
C120	30.00'	43°20'10"	22.69'	22.15'
C121	30.00'	19°38'58"	10.29'	10.24'
C122	30.00'	41°53'15"	21.93'	21.45'
C123	30.00'	55°14'12"	28.92'	27.81'
C124	364.00'	3°16'12"	20.77'	20.77'
C125	480.00'	3°16'12"	27.39'	27.39'
C126	520.00'	4°43'24"	42.87'	42.86'
C127	636.00'	4°43'24"	52.43'	52.42'
C207	170.00'	15°14'17"	45.21'	45.08'
C208(E)	600.00'	20°08'06"	210.85'	209.77'
C209(E)	570.00'	20°05'05"	199.81'	198.79'
C210(E)	200.00'	12°59'10"	45.33'	45.23'
C212(E)	189.97'	15°22'30"	50.98'	50.82'
C213(E)	189.76'	5°52'04"	19.43'	19.42'
C214(E)	177.00'	5°49'36"	18.00'	17.99'
C215(E)	202.00'	27°42'35"	97.69'	96.74'
C216(E)	488.00'	5°31'36"	47.07'	47.05'
C217(E)	502.00'	6°24'34"	56.16'	56.13'
C218(E)	502.00'	8°19'04"	72.88'	72.81'

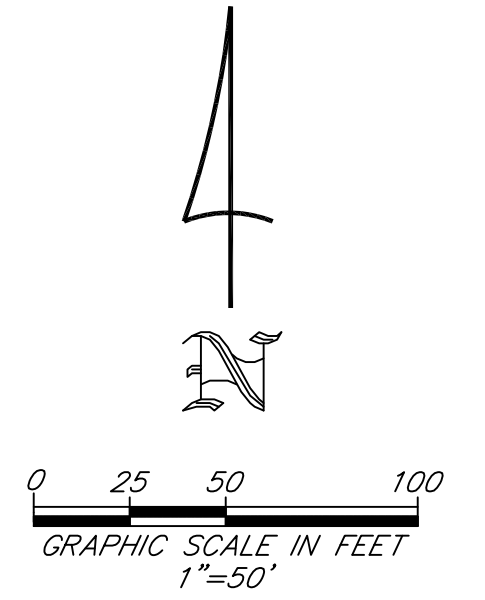
LINE TABLE		
LINE	LENGTH	BEARING
L1	10.97'	N 28°13'18" W
L2	40.00'	N 61°46'42" E
L3	10.97'	N 28°13'18" W
L4	40.31'	N 61°46'42" E
L13	19.63'	N 61°46'42" E
L22	50.00'	N 28°13'09" W
L59	11.25'	N 47°52'16" W
L60	10.30'	N 13°39'57" E
L68	12.05'	N 01°12'26" W
L71(E)	60.00'	N 28°13'18" W
L72(E)	50.00'	N 28°13'18" W
L73(E)	50.00'	N 28°13'18" W
L74(E)	56.58'	N 28°13'18" W
L76(E)	43.34'	N 28°13'18" W
L76(E)	45.21'	N 68°54'08" E
L77(E)	109.58'	N 21°05'52" W
L78(E)	211.14'	N 89°48'53" W
L79(E)	221.23'	N 89°48'53" W
L80(E)	4.88'	N 61°46'42" E
L82(E)	30.00'	N 68°47'22" E
L83(E)	10.00'	S 52°51'39" E
L84	10.97'	N 28°13'18" W
L85(E)	14.00'	N 77°08'43" E
L86(E)	14.00'	N 83°00'39" E
L87(E)	29.38'	N 45°11'07" E
L88(E)	27.33'	N 45°11'07" E
L89(E)	50.00'	N 28°13'18" W
L90(E)	50.00'	N 28°13'18" W
L91(E)	18.00'	N 61°46'42" E
L93(E)	14.00'	N 28°13'18" W
L94(E)	62.65'	N 75°38'14" E
L95(E)	24.92'	N 47°55'40" E
L96(E)	54.47'	N 61°46'42" E
L97(E)	137.04'	N 61°46'42" E
L98(E)	79.39'	N 55°22'08" E
L99(E)	8.43'	N 61°46'42" E
L100(E)	46.45'	N 70°05'46" E
L101(E)	173.48'	N 61°46'42" E
L102(E)	261.94'	N 61°46'42" E

LEGEND

- AC. ACRES
- A.E. ACCESS EASEMENT
- BOB BASIS OF BEARING
- C.R. COUNTY ROAD
- D.E. DRAINAGE EASEMENT
- (E) EASEMENT TO
- E.A.E. EMERGENCY ACCESS EASEMENT
- FCM FOUND CONCRETE MONUMENT
- FIP FOUND IRON PIPE
- FPKD FOUND PK NAIL & DISK
- F.P.L.E. FLORIDA POWER AND LIGHT EASEMENT
- ID. IDENTIFICATION
- I.E. IRRIGATION EASEMENT
- LB LICENSED BUSINESS
- L.B.E. LANDSCAPE BUFFER EASEMENT
- L.C.U.E. LEE COUNTY UTILITIES EASEMENT
- L.M.A.E. LAKE MAINTENANCE AND ACCESS EASEMENT
- L.M.E. LAKE MAINTENANCE EASEMENT
- N.R. NON-RADIAL
- O.R. OFFICIAL RECORDS BOOK
- P.C. POINT OF CURVATURE
- P.C.P. PERMANENT CONTROL POINT
- P.I. POINT OF INTERSECTION
- P.R.M. PERMANENT REFERENCE MONUMENT
- P.S.M. PROFESSIONAL SURVEYOR & MAPPER
- P.T. POINT OF TANGENT
- P.U.E. PUBLIC UTILITY EASEMENT
- R.D.E. REGIONAL DRAINAGE EASEMENT
- R.O.W. RIGHT-OF-WAY
- SEC. SECTION
- S.F. SQUARE FEET
- T.A.E. TEMPORARY ACCESS EASEMENT
- T.D.E. TEMPORARY DRAINAGE EASEMENT
- # NUMBER

SYMBOLS

- SET PERMANENT REFERENCE MONUMENT (5/8"x18" IRON ROD CAPPED "PRM LB 6897")
- FOUND PERMANENT REFERENCE MONUMENT (5/8"x18" IRON ROD CAPPED "PRM LB 6897") (UNLESS OTHERWISE NOTED)
- PERMANENT CONTROL POINT (MAGNETIC NAIL & DISK STAMPED "PCP LB 6897")
- INDICATES POINT OF INTERSECTION, POINT OF CURVATURE, POINT OF TANGENCY OR POINT OF REVERSE CURVATURE.
- ⊕ CENTERLINE OF RIGHT OF WAY
- SET WITNESS PIN 5.00" EACH WAY ON LINE AT ALL FOUND MONUMENTS (5/8"x18" IRON ROD CAPPED "WITNESS LB 6897")



D02020-E008 / PLT2021-E001

SHEET 4 OF 18

THIS INSTRUMENT PREPARED BY:
 JOHN SCOTT RHODES P.S.M. #5739
RHODES & RHODES
 LAND SURVEYING, INC.
 28100 BONITA GRANDE DRIVE, SUITE #107
 BONITA SPRINGS, FL 34135
 (239) 405-8166 FAX NO. (239) 405-8163
 FLORIDA BUSINESS LICENSE NO. LB 6897

RIVERCREEK - PHASE ONE

INSTRUMENT# _____

SHEET 4 OF 18

A SUBDIVISION LYING IN
 SECTIONS 19, 30, AND 31, TOWNSHIP 46 SOUTH, RANGE 26 EAST,
 VILLAGE OF ESTERO, LEE COUNTY, FLORIDA

CURVE	RADIUS	DELTA	LENGTH	CHORD	CHORD BEARING
C8	1000.00'	27°01'54"	471.79'	467.43'	N 14°42'21" W
C9	600.00'	41°06'37"	430.51'	421.33'	N 21°44'43" W
C11	400.00'	47°44'55"	333.35'	323.78'	N 22°41'03" E
C12	425.00'	47°23'26"	351.53'	341.59'	N 22°30'18" E
C13	375.00'	47°11'51"	308.91'	300.25'	N 22°24'31" E
C14	25.00'	90°00'00"	39.27'	35.36'	N 88°26'30" W
C16	105.00'	47°45'56"	87.53'	85.02'	N 67°19'28" W
C18	125.00'	47°45'56"	104.21'	101.22'	N 67°19'28" W
C19	25.00'	90°00'00"	39.27'	35.36'	N 46°12'26" W
C20	25.00'	90°00'00"	39.27'	35.36'	N 43°47'34" E
C21	25.00'	90°00'00"	39.27'	35.36'	N 46°12'26" W
C22	25.00'	90°00'00"	39.27'	35.36'	N 43°47'34" E
C46	480.00'	19°53'26"	166.63'	165.80'	N 11°09'09" W
C47	500.00'	19°53'26"	173.58'	172.71'	N 11°09'09" W
C48	520.00'	19°53'26"	180.52'	179.62'	N 11°09'09" W
C54	30.00'	90°00'00"	47.12'	42.43'	N 46°12'26" W
C55	30.00'	62°59'08"	32.98'	31.34'	N 30°17'08" E
C57	364.00'	19°53'26"	126.36'	125.73'	N 11°09'09" W
C60	570.00'	41°06'37"	408.98'	400.26'	N 21°44'43" W
C61	636.00'	19°53'26"	220.79'	219.68'	N 11°09'09" W
C120	30.00'	43°20'10"	22.69'	22.15'	N 20°27'39" E

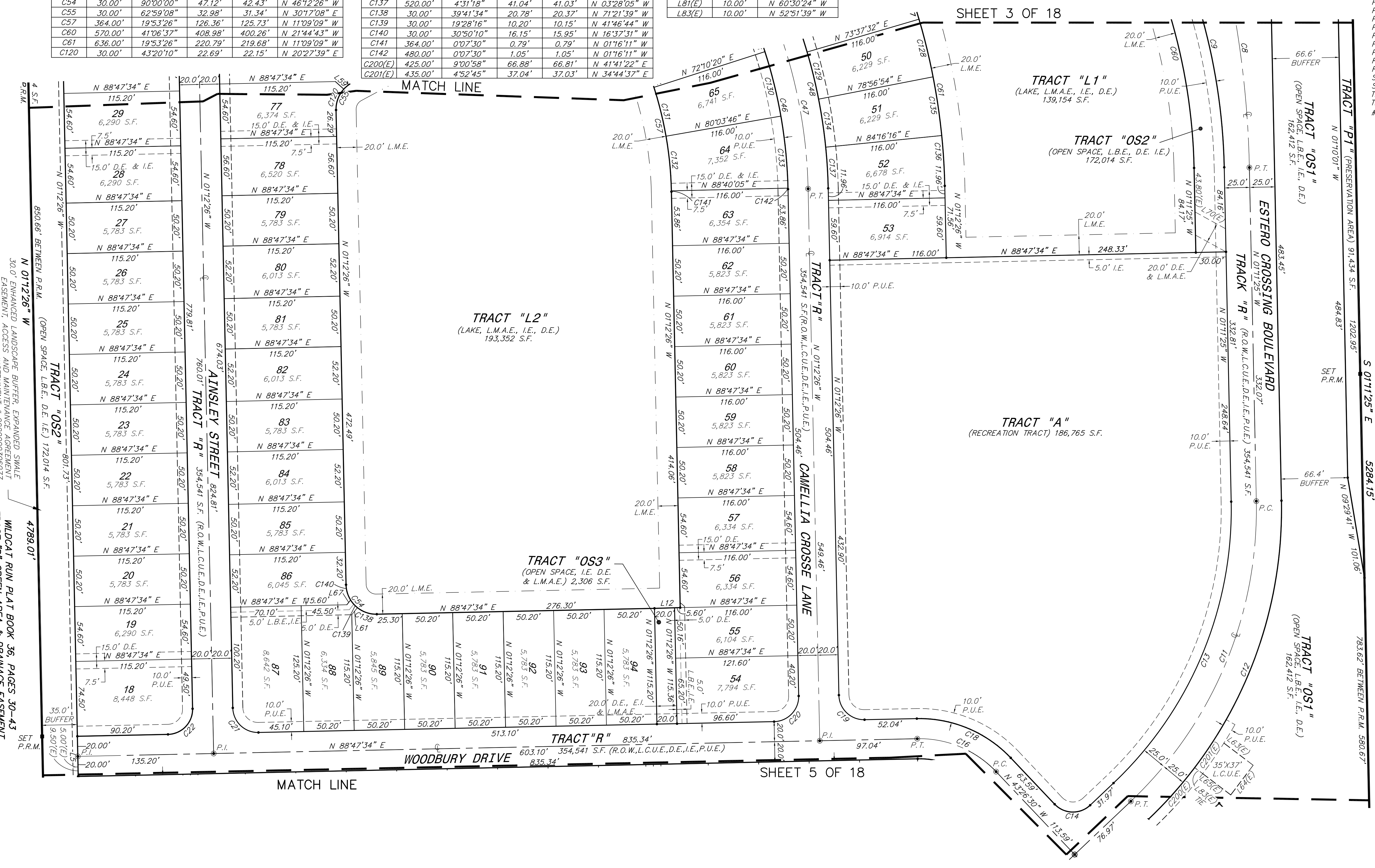
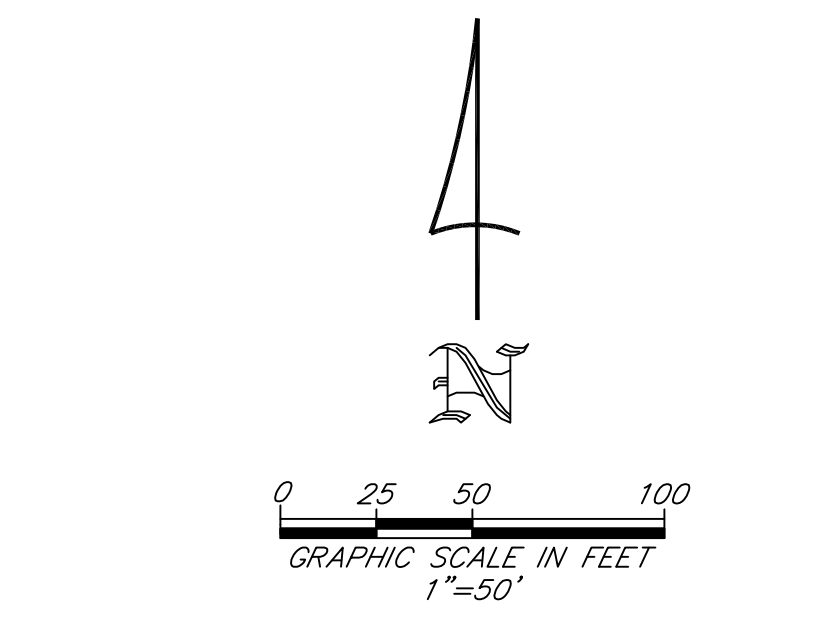
CURVE	RADIUS	DELTA	LENGTH	CHORD	CHORD BEARING
C128	636.00'	5°19'22"	59.08'	59.06'	N 13°42'47" W
C129	520.00'	5°19'22"	48.31'	48.29'	N 13°42'47" W
C130	480.00'	7°53'26"	66.10'	66.05'	N 13°52'57" W
C131	364.00'	7°53'26"	50.13'	50.09'	N 13°52'57" W
C132	364.00'	8°36'18"	54.67'	54.62'	N 05°38'05" W
C133	480.00'	8°36'18"	72.09'	72.02'	N 05°38'05" W
C134	520.00'	5°19'22"	48.31'	48.29'	N 08°23'25" W
C135	636.00'	5°19'22"	59.08'	59.06'	N 08°23'25" W
C136	636.00'	4°31'18"	50.19'	50.18'	N 03°28'05" W
C137	520.00'	4°31'18"	41.04'	41.03'	N 03°28'05" W
C138	30.00'	39°41'34"	20.78'	20.37'	N 71°21'39" W
C139	30.00'	19°28'16"	10.20'	10.15'	N 41°46'44" W
C140	30.00'	30°50'10"	16.15'	15.95'	N 16°37'31" W
C141	364.00'	0°07'30"	0.79'	0.79'	N 01°16'11" W
C142	480.00'	0°07'30"	1.05'	1.05'	N 01°16'11" W
C200(E)	425.00'	9°00'58"	66.88'	66.81'	N 41°41'22" E
C201(E)	435.00'	4°52'45"	37.04'	37.03'	N 34°44'37" E

LINE	LENGTH	BEARING
L5	40.00'	N 01°12'26" W
L12	25.60'	N 88°20'43" E
L59	11.25'	N 47°52'16" W
L61	8.99'	N 38°29'08" E
L63(E)	46.58'	N 52°51'49" W
L64(E)	37.00'	N 37°08'11" E
L65(E)	45.00'	N 52°51'49" W
L67	6.01'	N 38°29'08" E
L70(E)	34.62'	N 61°14'57" W
L81(E)	10.00'	N 60°30'24" W
L83(E)	10.00'	N 52°51'39" W

- ### LEGEND
- AC. ACRES
 - A.E. ACCESS EASEMENT
 - BOB BASIS OF BEARING
 - C.R. COUNTY ROAD
 - D.E. DRAINAGE EASEMENT
 - (E) EASEMENT TO
 - E.A.E. EMERGENCY ACCESS EASEMENT
 - FCM FOUND CONCRETE MONUMENT
 - FIP FOUND IRON PIPE
 - FPKD FOUND PK NAIL & DISK
 - F.P.L.E. FLORIDA POWER AND LIGHT EASEMENT
 - ID. IDENTIFICATION
 - I.E. IRRIGATION EASEMENT
 - LB LICENSED BUSINESS
 - L.B.E. LANDSCAPE BUFFER EASEMENT
 - L.C.U.E. LEE COUNTY UTILITIES EASEMENT
 - L.M.A.E. LAKE MAINTENANCE AND ACCESS EASEMENT
 - L.M.E. LAKE MAINTENANCE EASEMENT
 - N.R. NON-RADIAL
 - O.R. OFFICIAL RECORDS BOOK
 - P.C. POINT OF CURVATURE
 - P.C.P. PERMANENT CONTROL POINT
 - P.I. POINT OF INTERSECTION
 - P.R.M. PERMANENT REFERENCE MONUMENT
 - P.S.M. PROFESSIONAL SURVEYOR & MAPPER
 - P.T. POINT OF TANGENT
 - P.U.E. PUBLIC UTILITY EASEMENT
 - R.D.E. REGIONAL DRAINAGE EASEMENT
 - R.O.W. RIGHT-OF-WAY
 - SEC. SECTION
 - S.F. SQUARE FEET
 - T.A.E. TEMPORARY ACCESS EASEMENT
 - T.D.E. TEMPORARY DRAINAGE EASEMENT
 - # NUMBER

- ### SYMBOLS
- (5/8"x18" IRON ROD CAPPED "PRM LB 6897") SET PERMANENT REFERENCE MONUMENT
 - FOUND PERMANENT REFERENCE MONUMENT (5/8"x18" IRON ROD CAPPED "PRM LB 6897") (UNLESS OTHERWISE NOTED)
 - PERMANENT CONTROL POINT (MAGNETIC NAIL & DISK STAMPED "PCP LB 6897")
 - INDICATES POINT OF INTERSECTION, POINT OF CURVATURE, POINT OF TANGENCY OR POINT OF REVERSE CURVATURE.
 - ⊙ CENTERLINE OF RIGHT OF WAY
 - SET WITNESS PIN 5.00" EACH WAY ON LINE AT ALL FOUND MONUMENTS (5/8"x18" IRON ROD CAPPED "WITNESS LB 6897")

TRACT "CA-2" CONSERVATION AREA
 PRESERVE AT CORPSCREW
 INSTRUMENT #2012000094503
 S 01°11'25" E 5284.15'



RIVERCREEK - PHASE ONE

INSTRUMENT# _____
SHEET 5 OF 18

A SUBDIVISION LYING IN
SECTIONS 19, 30, AND 31, TOWNSHIP 46 SOUTH, RANGE 26 EAST,
VILLAGE OF ESTERO, LEE COUNTY, FLORIDA

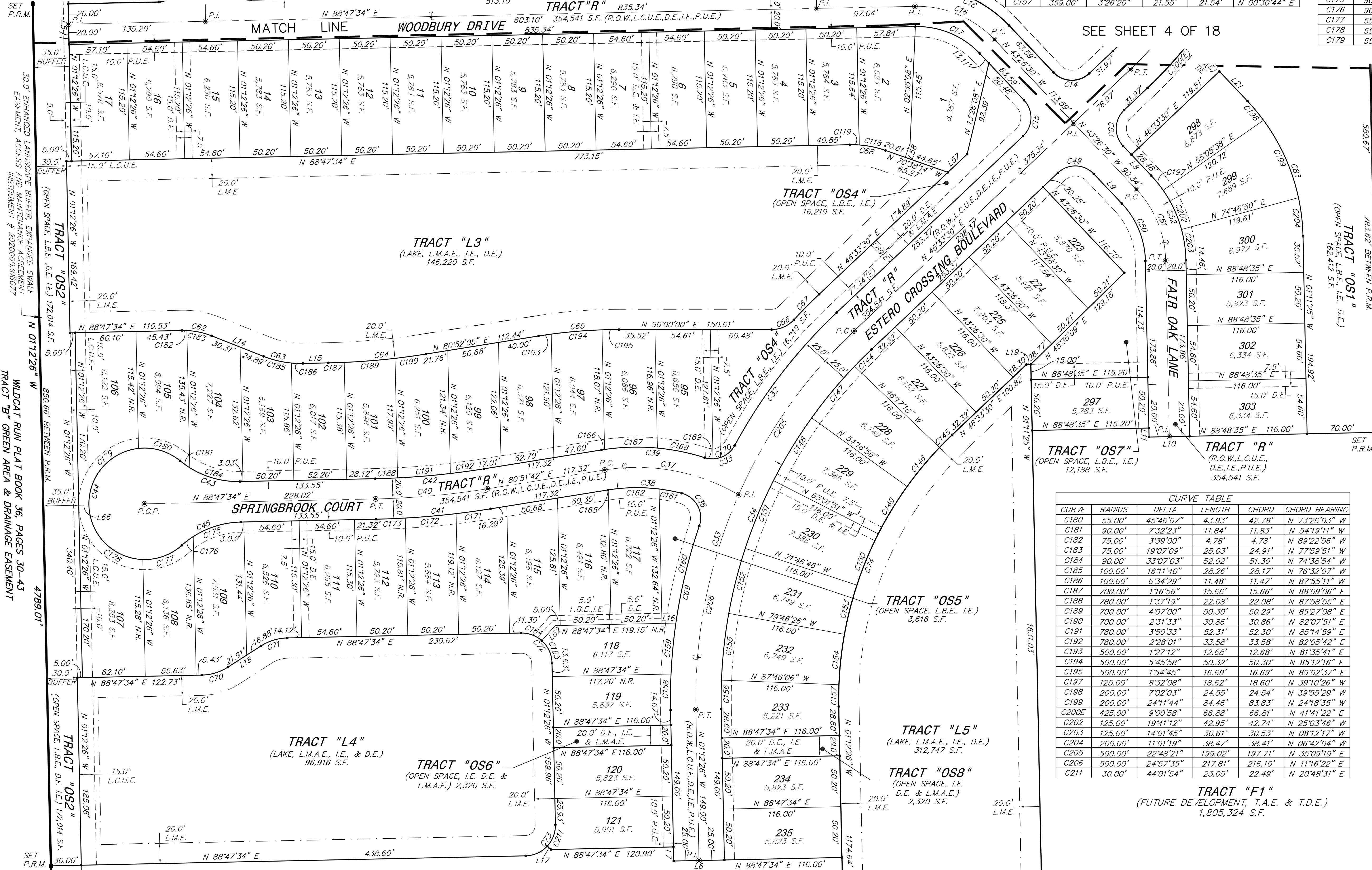
CURVE	RADIUS	DELTA	LENGTH	CHORD	CHORD BEARING
C14	25.00'	90°00'00"	39.27'	35.36'	N 88°26'30" W
C15	25.00'	90°00'00"	39.27'	35.36'	N 01°33'30" E
C16	105.00'	47°45'56"	87.53'	85.02'	N 67°19'28" W
C17	85.00'	47°45'56"	70.86'	68.83'	N 67°19'28" W
C18	125.00'	47°45'56"	104.21'	101.22'	N 67°19'28" W
C32	525.00'	18°07'32"	166.08'	165.39'	N 37°29'44" E
C33	500.00'	47°45'56"	416.83'	404.87'	N 22°40'32" E
C34	475.00'	47°45'56"	395.99'	384.62'	N 22°40'32" E
C35	25.00'	79°15'38"	34.58'	31.89'	N 68°03'48" E
C36	25.00'	94°47'02"	41.36'	36.80'	N 28°25'40" W
C37	200.00'	39°17'39"	137.16'	134.49'	N 79°29'29" W
C38	180.00'	23°19'07"	73.26'	72.75'	N 87°28'45" W
C39	220.00'	26°49'55"	103.03'	102.09'	N 85°43'21" W
C40	800.00'	7°55'52"	110.74'	110.65'	N 84°49'38" E
C41	820.00'	7°55'52"	113.51'	113.42'	N 84°49'38" E
C42	780.00'	7°55'52"	107.97'	107.89'	N 84°49'38" E
C43	90.00'	40°39'26"	63.86'	62.53'	N 70°52'43" W
C44	55.00'	26°18'52"	250.84'	83.45'	N 01°12'26" W
C45	90.00'	40°39'26"	63.86'	62.53'	N 68°27'51" E
C49	25.00'	90°00'00"	39.27'	35.36'	N 88°26'30" W
C50	85.00'	42°15'05"	62.68'	61.27'	N 22°18'57" W
C51	105.00'	42°15'05"	72.43'	75.69'	N 22°18'57" W

CURVE	RADIUS	DELTA	LENGTH	CHORD	CHORD BEARING
C52	125.00'	42°15'05"	92.18'	90.10'	N 22°18'57" W
C53	25.00'	90°00'00"	39.27'	35.36'	N 01°33'30" E
C62	75.00'	22°46'09"	29.80'	29.61'	N 79°49'21" W
C63	100.00'	22°46'09"	39.74'	39.48'	N 79°49'21" W
C64	700.00'	7°55'29"	96.82'	96.74'	N 84°49'49" E
C65	500.00'	9°07'55"	79.69'	79.61'	N 85°26'02" E
C66	30.00'	47°08'53"	24.69'	24.00'	N 66°25'33" E
C67	550.00'	3°42'23"	35.58'	35.57'	N 44°42'18" E
C68	100.00'	20°34'11"	35.90'	35.71'	N 80°55'20" W
C69	525.00'	20°10'17"	184.83'	183.88'	N 08°52'43" E

CURVE	RADIUS	DELTA	LENGTH	CHORD	CHORD BEARING
C70	50.00'	31°25'47"	27.43'	27.08'	N 73°04'41" E
C71	50.00'	31°25'47"	27.43'	27.08'	N 73°04'41" E
C72	30.00'	90°00'00"	47.12'	42.43'	N 46°12'26" W
C73	30.00'	90°00'00"	47.12'	42.43'	N 43°47'34" E
C74	359.00'	47°45'56"	299.29'	290.69'	N 22°40'32" E
C83	200.00'	42°15'05"	147.49'	144.17'	N 22°18'57" W
C117	60.00'	75°46'16"	79.35'	73.69'	N 81°19'38" W
C118	100.00'	15°12'26"	26.54'	26.46'	N 78°14'27" W
C119	100.00'	5°21'45"	9.36'	9.36'	N 88°31'33" W

CURVE	RADIUS	DELTA	LENGTH	CHORD	CHORD BEARING
C144	475.00'	2°50'46"	23.60'	23.59'	N 45°08'07" E
C145	359.00'	2°50'46"	17.83'	17.83'	N 45°08'07" E
C146	359.00'	7°59'40"	50.09'	50.05'	N 39°42'54" E
C147	475.00'	7°59'40"	66.28'	66.22'	N 39°42'54" E
C148	475.00'	8°44'55"	72.53'	72.46'	N 31°20'36" E
C149	359.00'	8°44'55"	54.82'	54.76'	N 31°20'36" E
C150	359.00'	8°44'55"	54.82'	54.76'	N 22°35'41" E
C151	475.00'	8°44'55"	72.53'	72.46'	N 22°35'41" E
C152	475.00'	7°59'40"	66.28'	66.22'	N 14°13'24" E
C153	359.00'	7°59'40"	50.09'	50.05'	N 14°13'24" E
C154	359.00'	7°59'40"	50.09'	50.05'	N 06°13'44" E
C155	475.00'	7°59'40"	66.28'	66.22'	N 06°13'44" E
C156	475.00'	3°26'20"	28.51'	28.51'	N 00°30'44" E
C157	359.00'	3°26'20"	21.55'	21.54'	N 00°30'44" E

CURVE	RADIUS	DELTA	LENGTH	CHORD	CHORD BEARING
C158	525.00'	3°52'51"	35.56'	35.55'	N 00°44'00" E
C159	525.00'	5°31'04"	50.56'	50.54'	N 05°25'57" E
C160	525.00'	10°46'22"	98.71'	98.57'	N 13°34'40" E
C161	180.00'	7°10'50"	22.56'	22.54'	N 29°24'36" W
C162	180.00'	16°01'53"	50.36'	50.20'	N 88°59'02" E
C163	30.00'	47°10'24"	24.70'	24.01'	N 24°47'38" W
C164	30.00'	42°49'36"	22.42'	21.91'	N 69°47'38" W
C165	180.00'	0°06'24"	0.33'	0.33'	N 80°54'54" E
C166	220.00'	0°48'06"	3.08'	3.08'	N 81°15'45" E
C167	220.00'	13°37'37"	52.32'	52.20'	N 88°28'36" E
C168	220.00'	12°24'12"	47.63'	47.53'	N 78°30'29" W
C169	25.00'	19°12'12"	8.38'	8.34'	N 81°54'30" W
C170	25.00'	6°03'26"	26.20'	25.02'	N 58°27'41" E
C171	820.00'	2°23'50"	34.31'	34.31'	N 82°03'37" E
C172	820.00'	3°30'57"	50.32'	50.32'	N 85°01'00" E
C173	820.00'	2°01'05"	28.88'	28.88'	N 87°47'02" E
C174	60.00'	66°57'44"	70.12'	66.20'	N 12°43'10" W
C175	90.00'	9°02'50"	14.21'	14.20'	N 52°39'33" E
C176	90.00'	9°02'50"	14.21'	14.20'	N 52°39'33" E
C177	55.00'	43°40'47"	41.93'	40.92'	N 69°58'32" E
C178	55.00'	86°58'40"	83.49'	75.70'	N 44°41'45" W
C179	55.00'	84°53'19"	81.49'	74.24'	N 41°14'14" E



SEE SHEET 4 OF 18

SEE SHEET 6 OF 18

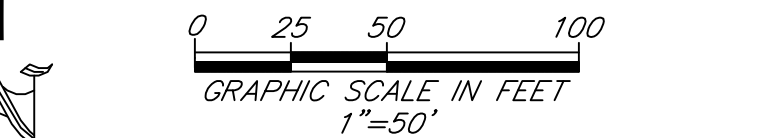
LEGEND

- AC ACRES
- A.E. ACCESS EASEMENT
- BOB BASIS OF BEARING
- C.R. COUNTY ROAD
- D.E. DRAINAGE EASEMENT
- (D) EASEMENT TO
- E.A.E. EMERGENCY ACCESS EASEMENT
- FCM FOUND CONCRETE MONUMENT
- FIP FOUND IRON PIPE
- FPKD FOUND PK NAIL & DISK
- F.P.L.E. FLORIDA POWER AND LIGHT EASEMENT
- ID IDENTIFICATION
- I.E. IRRIGATION EASEMENT
- LB LICENSED BUSINESS
- L.B. LANDSCAPE BUFFER EASEMENT
- L.C.U.E. LEE COUNTY UTILITIES EASEMENT
- L.M.A.E. LAKE MAINTENANCE AND ACCESS EASEMENT
- L.M.E. LAKE MAINTENANCE EASEMENT
- N.R. NON-RADIAL
- O.R. OFFICIAL RECORDS BOOK
- P.C. POINT OF CURVATURE
- P.C.P. PERMANENT CONTROL POINT
- P.I. POINT OF INTERSECTION
- P.R.M. PERMANENT REFERENCE MONUMENT
- P.S.M. PROFESSIONAL SURVEYOR & MAPPER
- P.T. POINT OF TANGENT
- P.U.E. PUBLIC UTILITY EASEMENT
- R.D.E. REGIONAL DRAINAGE EASEMENT
- R.O.W. RIGHT-OF-WAY
- SEC. SECTION
- S.F. SQUARE FEET
- T.A.E. TEMPORARY ACCESS EASEMENT
- T.D.E. TEMPORARY DRAINAGE EASEMENT
- # NUMBER

SYMBOLS

- SET PERMANENT REFERENCE MONUMENT (5/8"x18" IRON ROD CAPPED "PRM LB 6897")
- FOUND PERMANENT REFERENCE MONUMENT (5/8"x18" IRON ROD CAPPED "PRM LB 6897") (UNLESS OTHERWISE NOTED)
- PERMANENT CONTROL POINT (MAGNETIC NAIL & DISK STAMPED "PCP LB 6897")
- INDICATES POINT OF INTERSECTION, POINT OF CURVATURE, POINT OF TANGENCY OR POINT OF REVERSE CURVATURE.
- ⊙ CENTERLINE OF RIGHT OF WAY
- SET WITNESS PIN 5.00" EACH WAY ON LINE AT ALL FOUND MONUMENTS (5/8"x18" IRON ROD CAPPED "WITNESS LB 6897")

LINE	LENGTH	BEARING
L5	40.00'	N 01°12'26" W
L6	50.00'	N 88°47'34" E
L7	13.93'	N 01°12'26" W
L8	40.34'	N 43°26'30" W
L9	40.34'	N 43°26'30" W
L10	40.00'	N 88°48'35" E
L11	8.93'	N 01°11'25" W
L14	55.20'	N 68°26'17" W
L15	25.09'	N 88°47'34" E
L16	13.75'	N 88°47'34" E
L17	4.91'	N 47°10'32" W
L18	38.79'	N 57°21'47" E
L19	4.24'	N 88°48'35" E
L21	40.46'	N 43°26'30" W
L57	26.11'	N 46°33'30" E
L58	14.55'	N 19°21'46" E
L62	19.87'	N 41°37'10" E
L66	10.00'	N 88°47'35" E
L69(E)	25.00'	N 43°26'30" W



THIS INSTRUMENT PREPARED BY:
JOHN SCOTT RHODES P.S.M. #9739
RHODES & RHODES
LAND SURVEYING, INC.
28100 BONITA GRANDE DRIVE, SUITE #107
BONITA SPRINGS, FL 34135
(239) 405-8166 FAX NO. (239) 405-8163
FLORIDA BUSINESS LICENSE NO. LB 6897

PLT21201-1-001 / 8003-020200

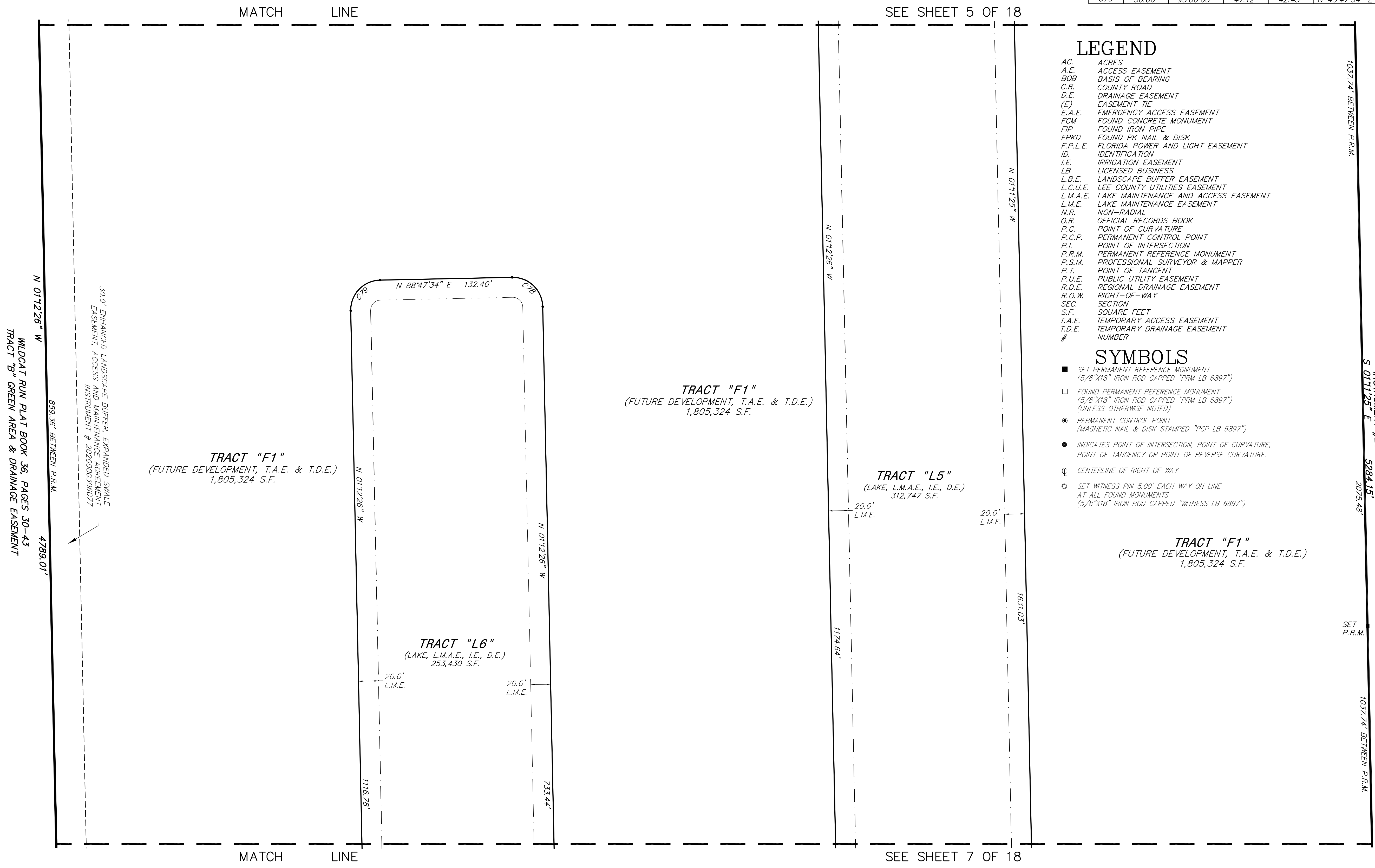
RIVERCREEK - PHASE ONE

INSTRUMENT# _____

SHEET 6 OF 18

A SUBDIVISION LYING IN
SECTIONS 19, 30, AND 31, TOWNSHIP 46 SOUTH, RANGE 26 EAST,
VILLAGE OF ESTERO, LEE COUNTY, FLORIDA

CURVE TABLE					
CURVE	RADIUS	DELTA	LENGTH	CHORD	CHORD BEARING
C78	30.00'	90°00'00"	47.12'	42.43'	N 46°12'26" W
C79	30.00'	90°00'00"	47.12'	42.43'	N 43°47'34" E



LEGEND

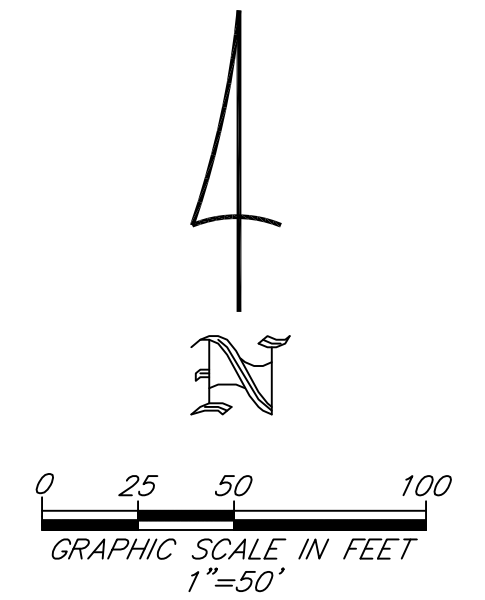
- AC ACRES
- A.E. ACCESS EASEMENT
- BOB BASIS OF BEARING
- C.R. COUNTY ROAD
- D.E. DRAINAGE EASEMENT
- (E) EASEMENT TIE
- E.A.E. EMERGENCY ACCESS EASEMENT
- FCM FOUND CONCRETE MONUMENT
- FIP FOUND IRON PIPE
- FPKD FOUND PK NAIL & DISK
- F.P.L.E. FLORIDA POWER AND LIGHT EASEMENT
- ID. IDENTIFICATION
- I.E. IRRIGATION EASEMENT
- LB LICENSED BUSINESS
- L.B.E. LANDSCAPE BUFFER EASEMENT
- L.C.U.E. LEE COUNTY UTILITIES EASEMENT
- L.M.A.E. LAKE MAINTENANCE AND ACCESS EASEMENT
- L.M.E. LAKE MAINTENANCE EASEMENT
- N.R. NON-RADIAL
- O.R. OFFICIAL RECORDS BOOK
- P.C. POINT OF CURVATURE
- P.C.P. PERMANENT CONTROL POINT
- P.I. POINT OF INTERSECTION
- P.R.M. PERMANENT REFERENCE MONUMENT
- P.S.M. PROFESSIONAL SURVEYOR & MAPPER
- P.T. POINT OF TANGENCY
- P.U.E. PUBLIC UTILITY EASEMENT
- R.D.E. REGIONAL DRAINAGE EASEMENT
- R.O.W. RIGHT-OF-WAY
- SEC. SECTION
- S.F. SQUARE FEET
- T.A.E. TEMPORARY ACCESS EASEMENT
- T.D.E. TEMPORARY DRAINAGE EASEMENT
- # NUMBER

SYMBOLS

- SET PERMANENT REFERENCE MONUMENT (5/8"X18" IRON ROD CAPPED "PRM LB 6897")
- FOUND PERMANENT REFERENCE MONUMENT (5/8"X18" IRON ROD CAPPED "PRM LB 6897") (UNLESS OTHERWISE NOTED)
- PERMANENT CONTROL POINT (MAGNETIC NAIL & DISK STAMPED "PCP LB 6897")
- INDICATES POINT OF INTERSECTION, POINT OF CURVATURE, POINT OF TANGENCY OR POINT OF REVERSE CURVATURE.
- ⊕ CENTERLINE OF RIGHT OF WAY
- SET WITNESS PIN 5.00' EACH WAY ON LINE AT ALL FOUND MONUMENTS (5/8"X18" IRON ROD CAPPED "WITNESS LB 6897")

TRACT "F1"
(FUTURE DEVELOPMENT, T.A.E. & T.D.E.)
1,805,324 S.F.

TRACT "CA-2" CONSERVATION AREA
PRESERVE AT CORKSCREW
INSTRUMENT #2012000094503
S 01°11'25" E 5284.15'
2075.48'



D02020-E008 / PLT2021-E001

THIS INSTRUMENT PREPARED BY:
JOHN SCOTT RHODES P.S.M. #5739
RHODES & RHODES
LAND SURVEYING, INC.
28100 BONITA GRANDE DRIVE, SUITE #107
BONITA SPRINGS, FL 34135
(239) 405-8166 FAX NO. (239) 405-8165
FLORIDA BUSINESS LICENSE NO. LB 6897

RIVERCREEK - PHASE ONE

A SUBDIVISION LYING IN
 SECTIONS 19, 30, AND 31, TOWNSHIP 46 SOUTH, RANGE 26 EAST,
 VILLAGE OF ESTERO, LEE COUNTY, FLORIDA

INSTRUMENT# _____

SHEET 7 OF 18

CURVE TABLE					
CURVE	RADIUS	DELTA	LENGTH	CHORD	CHORD BEARING
C75	75.00'	60°17'29"	78.92'	75.33'	N 28°57'20" E
C76	459.00'	30°56'23"	247.86'	244.86'	N 16°40'37" W
C77	741.00'	28°12'45"	364.87'	361.19'	N 15°18'48" W
C80	264.00'	24°27'38"	112.71'	111.85'	N 13°26'15" W
C81	30.00'	95°13'52"	49.86'	44.32'	N 73°17'00" W
C82	30.00'	88°31'15"	46.35'	41.88'	N 14°50'27" E
C85	420.00'	6°21'05"	46.56'	46.53'	N 36°45'28" W
C88	336.00'	27°18'12"	160.11'	158.60'	N 45°26'59" E
C89	150.00'	23°39'42"	61.95'	61.51'	N 76°58'44" E

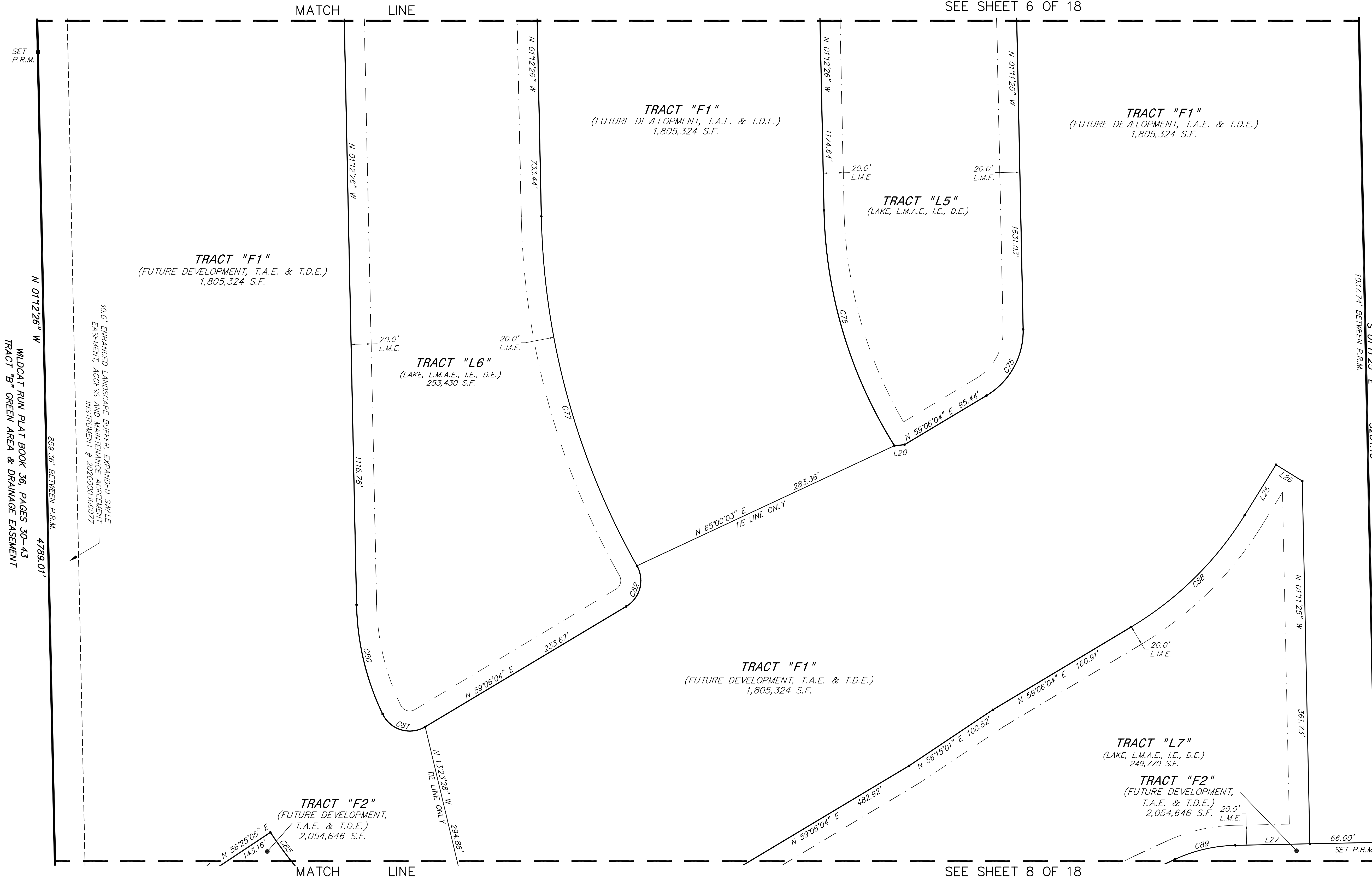
LINE TABLE		
LINE	LENGTH	BEARING
L20	10.06'	N 84°24'54" E
L25	59.29'	N 31°47'53" E
L26	30.86'	N 58°12'07" W
L27	74.41'	N 88°48'35" E

LEGEND

- A.C. ACRES
- A.E. ACCESS EASEMENT
- BOB BASIS OF BEARING
- C.R. COUNTY ROAD
- D.E. DRAINAGE EASEMENT
- (E) EASEMENT TIE
- E.A.E. EMERGENCY ACCESS EASEMENT
- FCM FOUND CONCRETE MONUMENT
- FIP FOUND IRON PIPE
- FPKD FOUND PK NAIL & DISK
- F.P.L.E. FLORIDA POWER AND LIGHT EASEMENT
- ID. IDENTIFICATION
- I.E. IRRIGATION EASEMENT
- LB LICENSED BUSINESS
- L.B.E. LANDSCAPE BUFFER EASEMENT
- L.C.U.E. LEE COUNTY UTILITIES EASEMENT
- L.M.A.E. LAKE MAINTENANCE AND ACCESS EASEMENT
- L.M.E. LAKE MAINTENANCE EASEMENT
- N.R. NON-RADIAL
- O.R. OFFICIAL RECORDS BOOK
- P.C. POINT OF CURVATURE
- P.C.P. PERMANENT CONTROL POINT
- P.I. POINT OF INTERSECTION
- P.R.M. PERMANENT REFERENCE MONUMENT
- P.S.M. PROFESSIONAL SURVEYOR & MAPPER
- P.T. POINT OF TANGENT
- P.U.E. PUBLIC UTILITY EASEMENT
- R.D.E. REGIONAL DRAINAGE EASEMENT
- R.O.W. RIGHT-OF-WAY
- SEC. SECTION
- S.F. SQUARE FEET
- T.A.E. TEMPORARY ACCESS EASEMENT
- T.D.E. TEMPORARY DRAINAGE EASEMENT
- # NUMBER

SYMBOLS

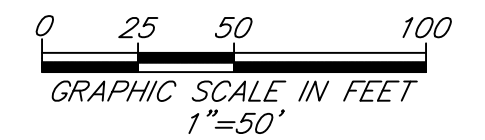
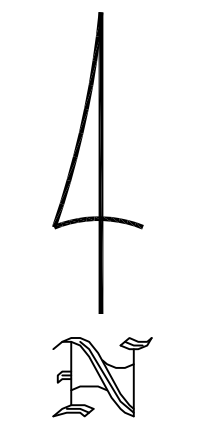
- SET PERMANENT REFERENCE MONUMENT (5/8"x18" IRON ROD CAPPED "PRM LB 6897")
- FOUND PERMANENT REFERENCE MONUMENT (5/8"x18" IRON ROD CAPPED "PRM LB 6897") (UNLESS OTHERWISE NOTED)
- PERMANENT CONTROL POINT (MAGNETIC NAIL & DISK STAMPED "PCP LB 6897")
- INDICATES POINT OF INTERSECTION, POINT OF CURVATURE, POINT OF TANGENCY OR POINT OF REVERSE CURVATURE.
- ⊕ CENTERLINE OF RIGHT OF WAY
- SET WITNESS PIN 5.00' EACH WAY ON LINE AT ALL FOUND MONUMENTS (5/8"x18" IRON ROD CAPPED "WITNESS LB 6897")



1037.74' BETWEEN P.R.M.
 S 01°12'5" E
 5284.15'
 TRACT "CA-2" CONSERVATION AREA
 PRESERVE AT CORKSCREW
 INSTRUMENT #2012000094503
 5284.15'

SET P.R.M.
 N 01°12'26" W
 WILDCAT RUN PLAT BOOK 36, PAGES 30-43
 TRACT "B" GREEN AREA & DRAINAGE EASEMENT
 859.36' BETWEEN P.R.M.
 4789.01'

300' ENHANCED LANDSCAPE BUFFER, EXPANDED SMALL
 EASEMENT, ACCESS AND MAINTENANCE AGREEMENT
 INSTRUMENT # 2020000306077



THIS INSTRUMENT PREPARED BY:
 JOHN SCOTT RHODES P.S.M. #5739
RHODES & RHODES
 LAND SURVEYING, INC.
 28100 BONITA GRANDE DRIVE, SUITE #107
 BONITA SPRINGS, FL 34135
 (239) 405-8166 FAX NO. (239) 405-8163
 FLORIDA BUSINESS LICENSE NO. LB 6897

D02020-E008 / PLT2021-E001

RIVERCREEK - PHASE ONE

INSTRUMENT# _____

SHEET 8 OF 18

A SUBDIVISION LYING IN
 SECTIONS 19, 30, AND 31, TOWNSHIP 46 SOUTH, RANGE 26 EAST,
 VILLAGE OF ESTERO, LEE COUNTY, FLORIDA

CURVE TABLE					
CURVE	RADIUS	DELTA	LENGTH	CHORD	CHORD BEARING
C86	25.00'	83°55'19"	36.62'	33.43'	N 02°01'40" E
C87	350.00'	4°30'22"	27.53'	27.52'	N 46°14'30" E
C90	175.00'	24°32'45"	74.97'	74.40'	N 52°52'31" E
C91	200.00'	23°16'36"	81.25'	80.69'	N 52°14'26" E
C92	1136.00'	5°17'18"	104.85'	104.82'	N 61°14'05" E
C93	234.00'	60°18'30"	246.30'	235.09'	N 28°56'49" E
C94	234.00'	49°42'07"	202.99'	196.68'	N 23°38'38" E
C95	234.00'	10°36'24"	43.32'	43.26'	N 53°47'53" E
C96	336.00'	30°48'40"	180.69'	178.52'	N 73°59'46" E
C97	864.00'	6°42'42"	101.21'	101.15'	N 61°56'47" E
C98	175.00'	23°30'27"	71.80'	71.30'	N 77°03'22" E
C99	175.00'	21°56'22"	67.01'	66.60'	N 77°50'24" E
C100	50.00'	62°03'07"	54.15'	51.54'	N 35°50'40" E
C101	70.00'	60°44'12"	74.20'	70.78'	N 35°11'12" E
C102	1326.00'	17°54'04"	414.29'	412.61'	N 56°36'16" E
C105	259.00'	34°45'44"	157.14'	154.74'	N 24°07'50" W

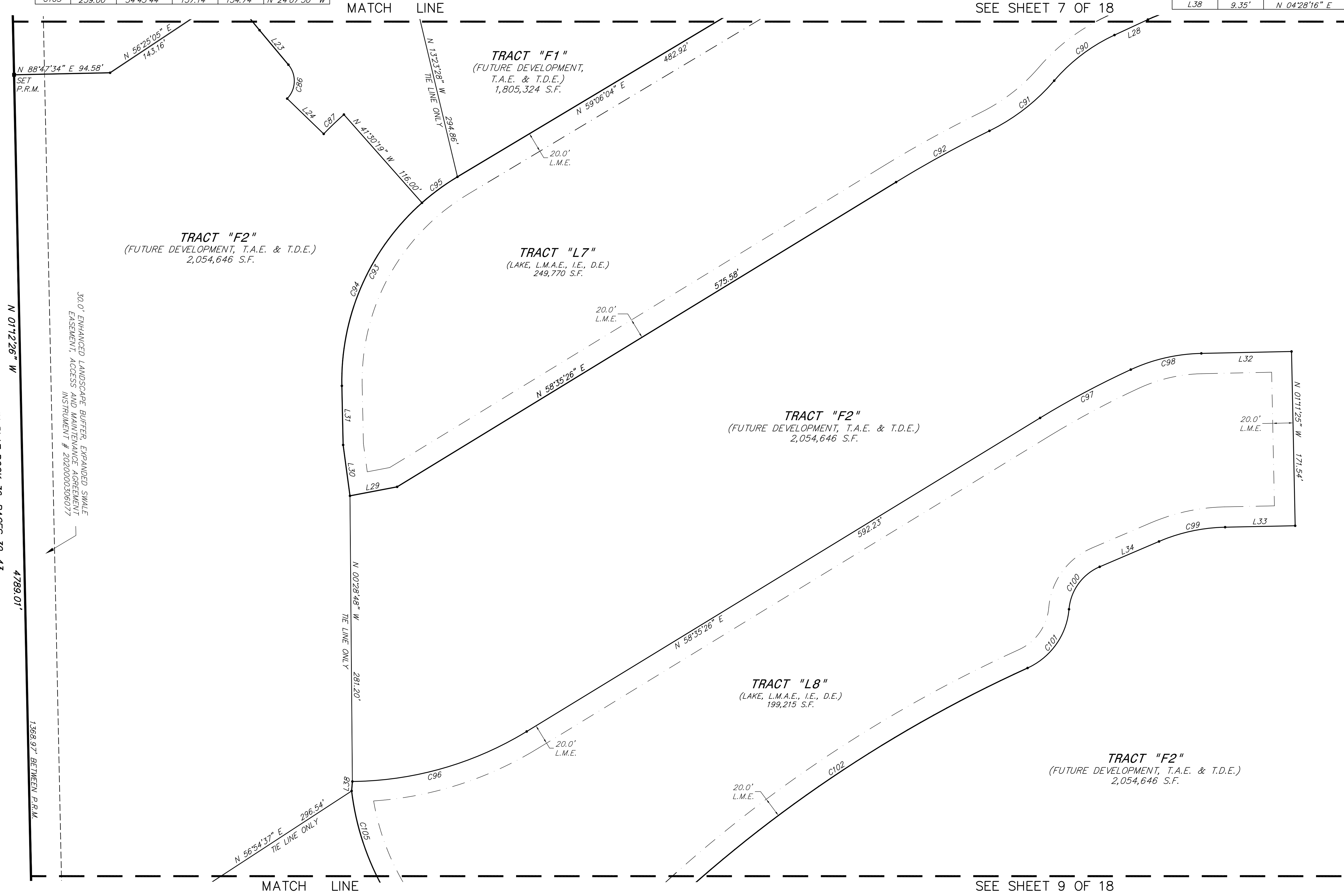
LINE TABLE		
LINE	LENGTH	BEARING
L23	44.23'	N 39°56'00" W
L24	50.00'	N 46°00'41" W
L28	36.23'	N 65°08'53" E
L29	47.25'	N 79°12'37" E
L30	50.52'	N 07°41'28" W
L31	58.20'	N 01°12'26" W
L32	88.81'	N 88°48'35" E
L33	68.95'	N 88°48'35" E
L34	63.53'	N 66°52'13" E
L38	9.35'	N 04°28'16" E

LEGEND

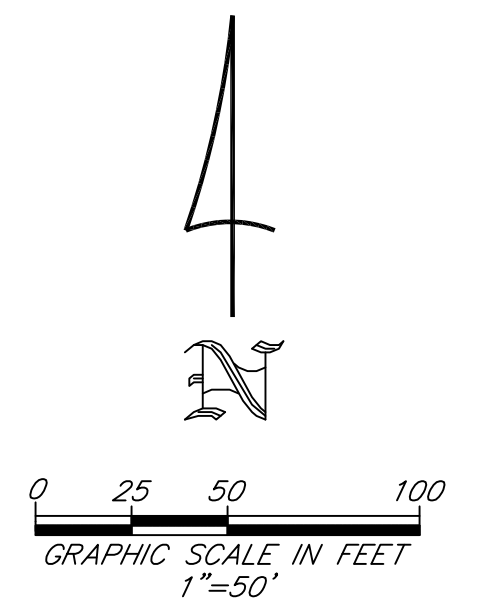
- A.C. ACRES
- A.E. ACCESS EASEMENT
- B.O.B. BASIS OF BEARING
- C.R. COUNTY ROAD
- D.E. DRAINAGE EASEMENT
- (E) EASEMENT TIE
- E.A.E. EMERGENCY ACCESS EASEMENT
- FCM FOUND CONCRETE MONUMENT
- FIP FOUND IRON PIPE
- FPKD FOUND PK NAIL & DISK
- F.P.L.E. FLORIDA POWER AND LIGHT EASEMENT
- ID. IDENTIFICATION
- I.E. IRRIGATION EASEMENT
- LB LICENSED BUSINESS
- L.B.E. LANDSCAPE BUFFER EASEMENT
- L.C.U.E. LEE COUNTY UTILITIES EASEMENT
- L.M.A.E. LAKE MAINTENANCE AND ACCESS EASEMENT
- L.M.E. LAKE MAINTENANCE EASEMENT
- N.R. NON-RADIAL
- O.R. OFFICIAL RECORDS BOOK
- P.C. POINT OF CURVATURE
- P.C.P. PERMANENT CONTROL POINT
- P.I. POINT OF INTERSECTION
- P.R.M. PERMANENT REFERENCE MONUMENT
- P.S.M. PROFESSIONAL SURVEYOR & MAPPER
- P.T. POINT OF TANGENT
- P.U.E. PUBLIC UTILITY EASEMENT
- R.D.E. REGIONAL DRAINAGE EASEMENT
- R.O.W. RIGHT-OF-WAY
- SEC. SECTION
- S.F. SQUARE FEET
- T.A.E. TEMPORARY ACCESS EASEMENT
- T.D.E. TEMPORARY DRAINAGE EASEMENT
- # NUMBER

SYMBOLS

- SET PERMANENT REFERENCE MONUMENT (5/8"x18" IRON ROD CAPPED "PRM LB 6897")
- FOUND PERMANENT REFERENCE MONUMENT (5/8"x18" IRON ROD CAPPED "PRM LB 6897") (UNLESS OTHERWISE NOTED)
- PERMANENT CONTROL POINT (MAGNETIC NAIL & DISK STAMPED "PCP LB 6897")
- INDICATES POINT OF INTERSECTION, POINT OF CURVATURE, POINT OF TANGENCY OR POINT OF REVERSE CURVATURE.
- ⊕ CENTERLINE OF RIGHT OF WAY
- SET WITNESS PIN 5.00' EACH WAY ON LINE AT ALL FOUND MONUMENTS (5/8"x18" IRON ROD CAPPED "WITNESS LB 6897")



TRACT "CA-2" CONSERVATION AREA
 PRESERVE AT CORKSCREW
 INSTRUMENT #2012000094503
 S 01°12'25" E
 901.34' BETWEEN P.R.M.
 5284.15'



THIS INSTRUMENT PREPARED BY:
 JOHN SCOTT RHODES P.S.M. #5739
RHODES & RHODES
 LAND SURVEYING, INC.
 28100 BONITA GRANDE DRIVE, SUITE #107
 BONITA SPRINGS, FL 34135
 (239) 405-8166 FAX NO. (239) 405-8165
 FLORIDA BUSINESS LICENSE NO. LB 6897

D02020-E008 / PLT2021-E001

RIVERCREEK - PHASE ONE

INSTRUMENT# _____

SHEET 9 OF 18

A SUBDIVISION LYING IN
 SECTIONS 19, 30, AND 31, TOWNSHIP 46 SOUTH, RANGE 26 EAST,
 VILLAGE OF ESTERO, LEE COUNTY, FLORIDA

CURVE TABLE					
CURVE	RADIUS	DELTA	LENGTH	CHORD	CHORD BEARING
C103	464.00'	18°23'45"	148.98'	148.34'	N 56°51'06" E
C104	741.00'	4°03'58"	52.58'	52.57'	N 39°28'43" W
C105	259.00'	34°45'44"	157.14'	154.74'	N 24°07'50" W
C106	541.00'	20°41'09"	195.32'	194.26'	N 31°10'07" W
C107	459.00'	9°36'59"	77.04'	76.95'	N 36°42'12" W
C108	35.00'	120°41'17"	73.72'	60.83'	N 28°26'56" E
C109	50.00'	30°29'57"	26.62'	26.30'	N 73°32'36" E
C110	40.00'	121°10'18"	84.59'	69.69'	N 61°07'14" W
C114	30.00'	65°32'51"	34.32'	32.48'	N 32°14'20" E
C115	816.00'	18°03'56"	257.29'	256.22'	N 55°58'47" E
C116	984.00'	30°39'19"	526.48'	520.22'	N 62°16'29" E

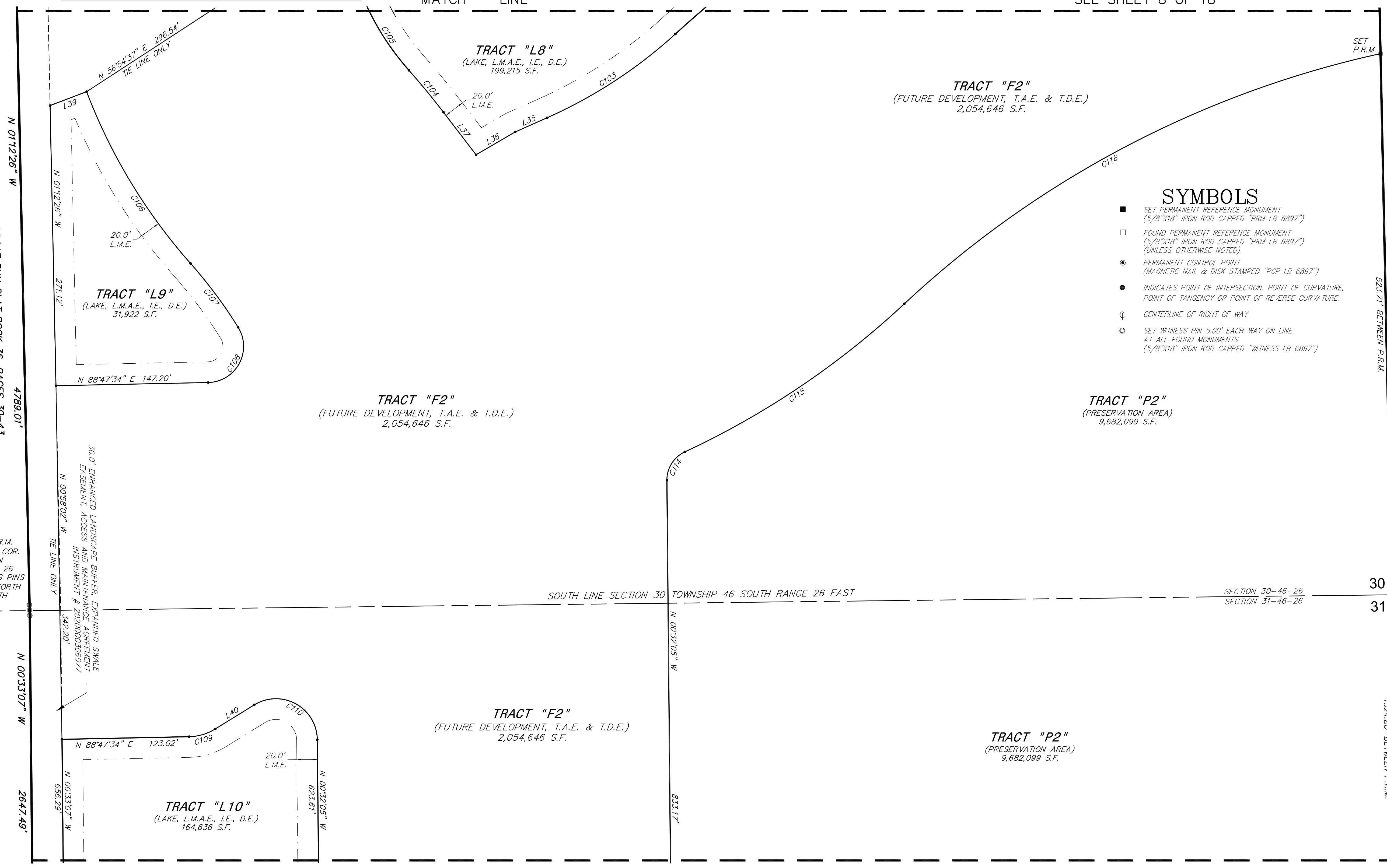
LINE TABLE		
LINE	LENGTH	BEARING
L35	33.65'	N 66°02'59" E
L36	43.81'	N 59°44'01" E
L37	51.82'	N 37°26'44" W
L39	37.80'	N 69°10'28" E
L40	44.33'	N 58°17'37" E

LEGEND

- AC. ACRES
- A.E. ACCESS EASEMENT
- BOB BASIS OF BEARING
- C.R. COUNTY ROAD
- D.E. DRAINAGE EASEMENT
- (E) EASEMENT TIE
- E.A.E. EMERGENCY ACCESS EASEMENT
- FCM FOUND CONCRETE MONUMENT
- FIP FOUND IRON PIPE
- FPKD FOUND PK NAIL & DISK
- F.P.L.E. FLORIDA POWER AND LIGHT EASEMENT
- ID. IDENTIFICATION
- I.E. IRRIGATION EASEMENT
- LB LICENSED BUSINESS
- L.B.E. LANDSCAPE BUFFER EASEMENT
- L.C.U.E. LEE COUNTY UTILITIES EASEMENT
- L.M.A.E. LAKE MAINTENANCE AND ACCESS EASEMENT
- L.M.E. LAKE MAINTENANCE EASEMENT
- N.R. NON-RADIAL
- O.R. OFFICIAL RECORDS BOOK
- P.C. POINT OF CURVATURE
- P.C.P. PERMANENT CONTROL POINT
- P.I. POINT OF INTERSECTION
- P.R.M. PERMANENT REFERENCE MONUMENT
- P.S.M. PROFESSIONAL SURVEYOR & MAPPER
- P.T. POINT OF TANGENCY
- P.U.E. PUBLIC UTILITY EASEMENT
- R.D.E. REGIONAL DRAINAGE EASEMENT
- R.O.W. RIGHT-OF-WAY
- SEC. SECTION
- S.F. SQUARE FEET
- T.A.E. TEMPORARY ACCESS EASEMENT
- T.D.E. TEMPORARY DRAINAGE EASEMENT
- # NUMBER

SYMBOLS

- SET PERMANENT REFERENCE MONUMENT (5/8"x18" IRON ROD CAPPED "PRM LB 6897")
- FOUND PERMANENT REFERENCE MONUMENT (5/8"x18" IRON ROD CAPPED "PRM LB 6897") (UNLESS OTHERWISE NOTED)
- PERMANENT CONTROL POINT (MAGNETIC NAIL & DISK STAMPED "PCP LB 6897")
- INDICATES POINT OF INTERSECTION, POINT OF CURVATURE, POINT OF TANGENCY OR POINT OF REVERSE CURVATURE.
- ⊕ CENTERLINE OF RIGHT OF WAY
- SET WITNESS PIN 5.00' EACH WAY ON LINE AT ALL FOUND MONUMENTS (5/8"x18" IRON ROD CAPPED "WITNESS LB 6897")

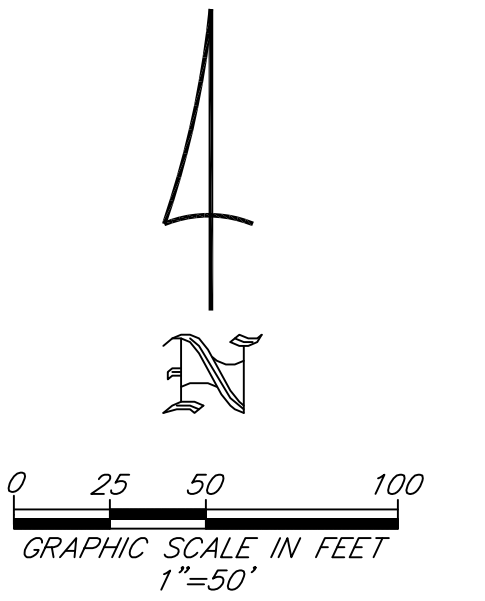


TRACT "CA-2" CONSERVATION AREA
 PRESERVE AT CORNER
 INSTRUMENT #2012000094503
 S 011125° E 5284.15'
 523.71' BETWEEN P.R.M.

FCM INK ENGINEERING S.W.
 COR. OF SECTION 29 AND
 N.W. COR. OF BELLA TERRA
 UNIT TWO WITNESS PINS
 5.00' NORTH & SOUTH

SECTION 29-46-26
 SECTION 32-46-26

BELLA TERRA UNIT SIXTEEN
 INSTRUMENT NO. 2012000054679
 S 0032° 05' E 2649.60'
 1324.80' BETWEEN P.R.M.



THIS INSTRUMENT PREPARED BY:
 JOHN SCOTT RHODES P.S.M. #5739
RHODES & RHODES
 LAND SURVEYING, INC.
 28100 BONITA GRANDE DRIVE, SUITE #107
 BONITA SPRINGS, FL 34135
 (239) 405-8166 FAX NO. (239) 405-8163
 FLORIDA BUSINESS LICENSE NO. LB 6897

D02020-E000 / PLT2021-E001

WILDCAT RUN PLAT BOOK 36, PAGES 30-43
 TRACT "B" GREEN AREA & DRAINAGE EASEMENT

SET P.R.M.
 S 1/4 COR.
 SECTION
 30-46-26
 WITNESS PINS
 5.00' NORTH
 & SOUTH

30' ENHANCED LANDSCAPE BUFFER, EXPANDED SWALE
 EASEMENT, ACCESS AND MAINTENANCE AGREEMENT
 INSTRUMENT # 2020000308077
 N 00°58'02" W 342.20'
 THE LINE ONLY

N 00°33'07" W 2647.49'

N 01°12'26" W 4789.01'

N 01°12'26" W 271.12'

SOUTH LINE SECTION 30 TOWNSHIP 46 SOUTH RANGE 26 EAST
 SECTION 30-46-26
 SECTION 31-46-26

SEE SHEET 8 OF 18

SEE SHEET 10 OF 18

RIVERCREEK - PHASE ONE

A SUBDIVISION LYING IN
 SECTIONS 19, 30, AND 31, TOWNSHIP 46 SOUTH, RANGE 26 EAST,
 VILLAGE OF ESTERO, LEE COUNTY, FLORIDA

INSTRUMENT# _____

SHEET 10 OF 18

LEGEND

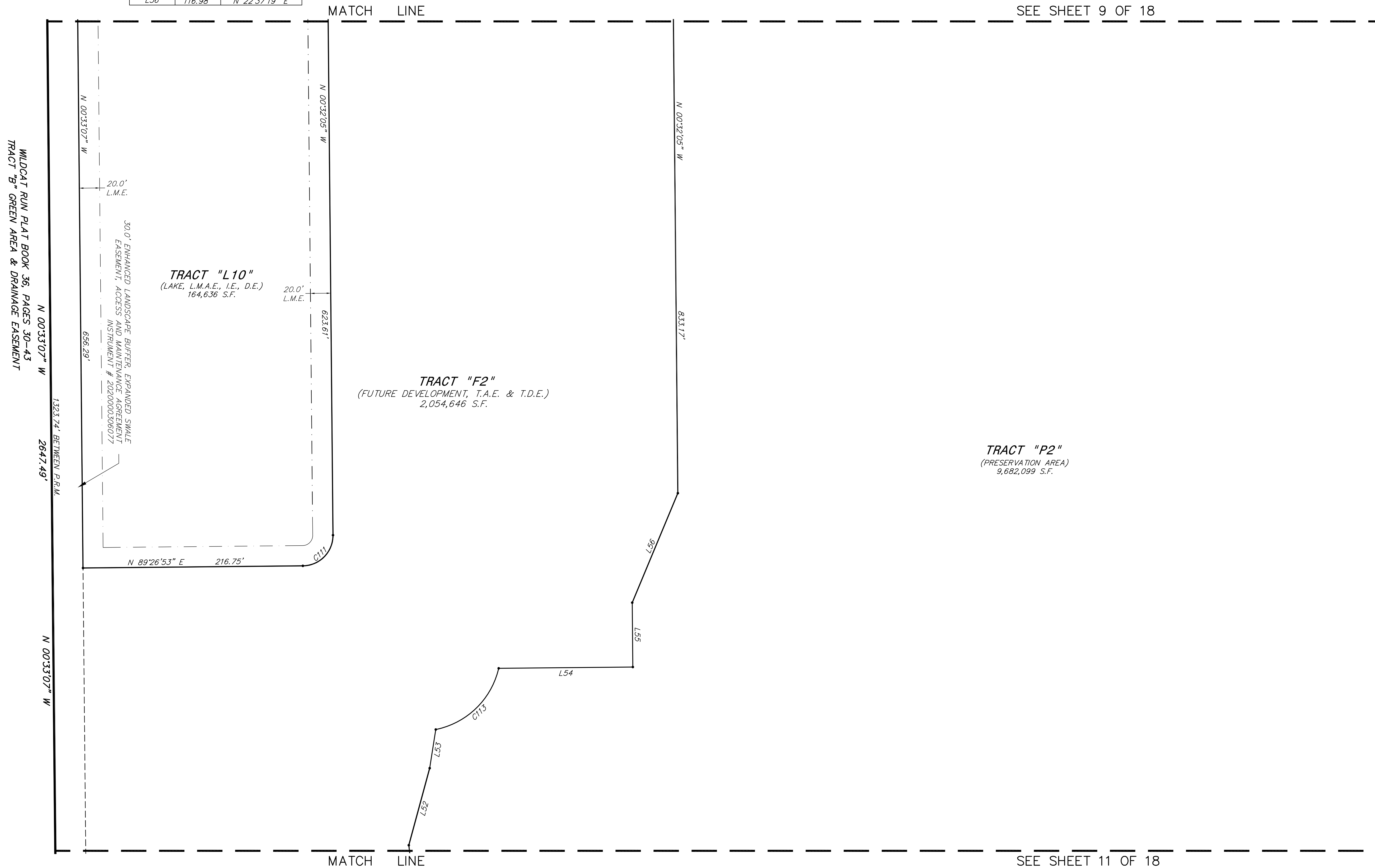
- AC. ACRES
- A.E. ACCESS EASEMENT
- BOB BASIS OF BEARING
- C.R. COUNTY ROAD
- D.E. DRAINAGE EASEMENT
- (E) EASEMENT TIE
- E.A.E. EMERGENCY ACCESS EASEMENT
- FCM FOUND CONCRETE MONUMENT
- FIP FOUND IRON PIPE
- FFPK FOUND PK NAIL & DISK
- F.P.L.E. FLORIDA POWER AND LIGHT EASEMENT
- ID. IDENTIFICATION
- I.E. IRRIGATION EASEMENT
- LB LICENSED BUSINESS
- L.B.E. LANDSCAPE BUFFER EASEMENT
- L.C.U.E. LEE COUNTY UTILITIES EASEMENT
- L.M.A.E. LAKE MAINTENANCE AND ACCESS EASEMENT
- L.M.E. LAKE MAINTENANCE EASEMENT
- N.R. NON-RADIAL
- O.R. OFFICIAL RECORDS BOOK
- P.C. POINT OF CURVATURE
- P.C.P. PERMANENT CONTROL POINT
- P.I. POINT OF INTERSECTION
- P.R.M. PERMANENT REFERENCE MONUMENT
- P.S.M. PROFESSIONAL SURVEYOR & MAPPER
- P.T. POINT OF TANGENT
- P.U.E. PUBLIC UTILITY EASEMENT
- R.D.E. REGIONAL DRAINAGE EASEMENT
- R.O.W. RIGHT-OF-WAY
- SEC. SECTION
- S.F. SQUARE FEET
- T.A.E. TEMPORARY ACCESS EASEMENT
- T.D.E. TEMPORARY DRAINAGE EASEMENT
- # NUMBER

SYMBOLS

- SET PERMANENT REFERENCE MONUMENT
(5/8"x1/8" IRON ROD CAPPED "PRM LB 6897")
- FOUND PERMANENT REFERENCE MONUMENT
(5/8"x1/8" IRON ROD CAPPED "PRM LB 6897")
(UNLESS OTHERWISE NOTED)
- PERMANENT CONTROL POINT
(MAGNETIC NAIL & DISK STAMPED "PCP LB 6897")
- INDICATES POINT OF INTERSECTION, POINT OF CURVATURE,
POINT OF TANGENCY OR POINT OF REVERSE CURVATURE.
- ⊖ CENTERLINE OF RIGHT OF WAY
- SET WITNESS PIN 5.00' EACH WAY ON LINE
AT ALL FOUND MONUMENTS
(5/8"x1/8" IRON ROD CAPPED "WITNESS LB 6897")

LINE	LENGTH	BEARING
L52	78.73'	N 15°10'36" E
L53	38.60'	N 08°54'45" E
L54	132.23'	N 89°26'46" E
L55	63.50'	N 00°32'05" W
L56	116.98'	N 22°37'19" E

CURVE	RADIUS	DELTA	LENGTH	CHORD	CHORD BEARING
C111	30.00'	89°58'58"	47.11'	42.42'	N 44°27'24" E
C113	80.00'	65°31'01"	91.48'	86.58'	N 45°47'38" E

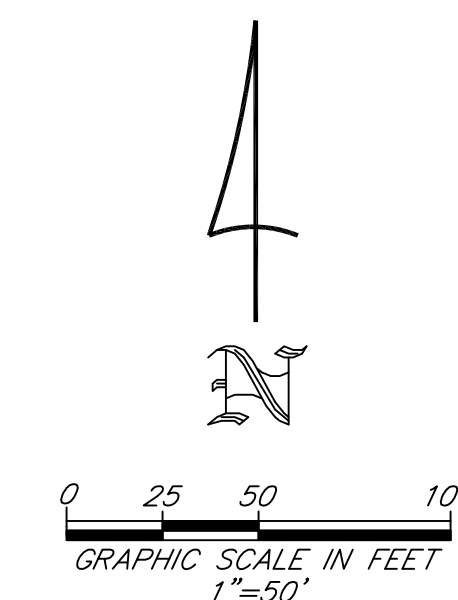


SEE SHEET 9 OF 18

SEE SHEET 11 OF 18

S 00°32'05" E 2649.60'
 1324.80' BETWEEN P.R.M.

BELLA TERRA UNIT SIXTEEN
 INSTRUMENT NO. 2012000054679



THIS INSTRUMENT PREPARED BY:
 JOHN SCOTT RHODES P.S.M. #5739
RHODES & RHODES
 LAND SURVEYING, INC.
 28100 BONITA GRANDE DRIVE, SUITE #107
 BONITA SPRINGS, FL 34135
 (239) 405-8166 FAX NO. (239) 405-8165
 FLORIDA BUSINESS LICENSE NO. LB 6897

D02020-E008 / PLT2021-E001

RIVERCREEK - PHASE ONE

A SUBDIVISION LYING IN
 SECTIONS 19, 30, AND 31, TOWNSHIP 46 SOUTH, RANGE 26 EAST,
 VILLAGE OF ESTERO, LEE COUNTY, FLORIDA

INSTRUMENT# _____

SHEET 11 OF 18

LINE TABLE		
LINE	LENGTH	BEARING
L41	80.98'	N 06°33'02" E
L42	108.62'	N 03°58'22" W
L43	126.93'	N 08°29'45" E
L44	83.85'	N 09°33'02" E
L45	63.08'	N 03°59'38" E
L46	37.33'	N 01°07'24" W
L47	78.97'	N 20°37'43" W
L48	8.40'	N 24°27'22" W
L49	35.82'	N 24°26'24" W
L50	51.84'	N 30°33'41" W
L51	36.64'	N 06°46'47" W

CURVE TABLE					
CURVE	RADIUS	DELTA	LENGTH	CHORD	CHORD BEARING
CT12	205.00'	36°28'02"	130.48'	128.29'	N 18°46'06" W

LEGEND

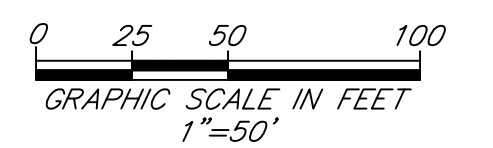
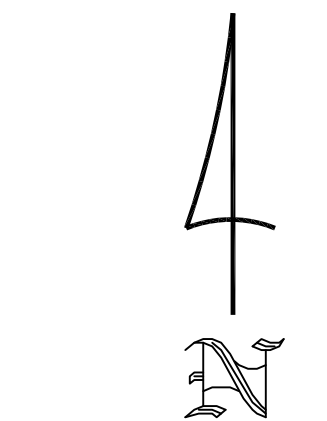
- AC. ACRES
- A.E. ACCESS EASEMENT
- BOB BASIS OF BEARING
- C.R. COUNTY ROAD
- D.E. DRAINAGE EASEMENT
- (E) EASEMENT TIE
- E.A.E. EMERGENCY ACCESS EASEMENT
- FCM FOUND CONCRETE MONUMENT
- FIP FOUND IRON PIPE
- FPKD FOUND PK NAIL & DISK
- F.P.L.E. FLORIDA POWER AND LIGHT EASEMENT
- ID. IDENTIFICATION
- I.E. IRRIGATION EASEMENT
- LB LICENSED BUSINESS
- L.B.E. LANDSCAPE BUFFER EASEMENT
- L.C.U.E. LEE COUNTY UTILITIES EASEMENT
- L.M.A.E. LAKE MAINTENANCE AND ACCESS EASEMENT
- L.M.E. LAKE MAINTENANCE EASEMENT
- N.R. NON-RADIAL
- O.R. OFFICIAL RECORDS BOOK
- P.C. POINT OF CURVATURE
- P.C.P. PERMANENT CONTROL POINT
- P.I. POINT OF INTERSECTION
- P.R.M. PERMANENT REFERENCE MONUMENT
- P.S.M. PROFESSIONAL SURVEYOR & MAPPER
- P.T. POINT OF TANGENT
- P.U.E. PUBLIC UTILITY EASEMENT
- R.D.E. REGIONAL DRAINAGE EASEMENT
- R.O.W. RIGHT-OF-WAY
- SEC. SECTION
- S.F. SQUARE FEET
- T.A.E. TEMPORARY ACCESS EASEMENT
- T.D.E. TEMPORARY DRAINAGE EASEMENT
- # NUMBER

SYMBOLS

- SET PERMANENT REFERENCE MONUMENT
(5/8"X18" IRON ROD CAPPED "PRM LB 6897")
- FOUND PERMANENT REFERENCE MONUMENT
(5/8"X18" IRON ROD CAPPED "PRM LB 6897")
(UNLESS OTHERWISE NOTED)
- PERMANENT CONTROL POINT
(MAGNETIC NAIL & DISK STAMPED "PCP LB 6897")
- INDICATES POINT OF INTERSECTION, POINT OF CURVATURE,
POINT OF TANGENCY OR POINT OF REVERSE CURVATURE.
- ⊕ CENTERLINE OF RIGHT OF WAY
- SET WITNESS PIN 5.00' EACH WAY ON LINE
AT ALL FOUND MONUMENTS
(5/8"X18" IRON ROD CAPPED "WITNESS LB 6897")

BELLA TERRA UNIT SIXTEEN
 INSTRUMENT NO. 2012000054679

1324.80' BETWEEN P.R.M.
 S 00°32'05" E 2649.60'



THIS INSTRUMENT PREPARED BY:
 JOHN SCOTT RHODES P.S.M. #5739
RHODES & RHODES
 LAND SURVEYING, INC.
 28100 BONITA GRANDE DRIVE, SUITE #107
 BONITA SPRINGS, FL 34135
 (239) 405-8166 FAX NO. (239) 405-8165
 FLORIDA BUSINESS LICENSE NO. LB 6897

MATCH LINE

SEE SHEET 10 OF 18

MATCH LINE

SEE SHEET 12 OF 18

TRACT "F2"
 (FUTURE DEVELOPMENT, T.A.E. & T.D.E.)
 2,054,646 S.F.

TRACT "P2"
 (PRESERVATION AREA)
 9,682,099 S.F.

30' ENHANCED LANDSCAPE BUFFER, EXPANDED SWALE
 EASEMENT, ACCESS AND MAINTENANCE AGREEMENT
 INSTRUMENT # 2020000306077

WILDCAT RUN PLAT BOOK 36, PAGES 30-43
 TRACT "B" GREEN AREA & DRAINAGE EASEMENT

788.67' BETWEEN P.R.M.
 2647.49'

DO2020-E008 / PLT2021-E001

RIVERCREEK - PHASE ONE

A SUBDIVISION LYING IN
 SECTIONS 19, 30, AND 31, TOWNSHIP 46 SOUTH, RANGE 26 EAST,
 VILLAGE OF ESTERO, LEE COUNTY, FLORIDA

INSTRUMENT# _____

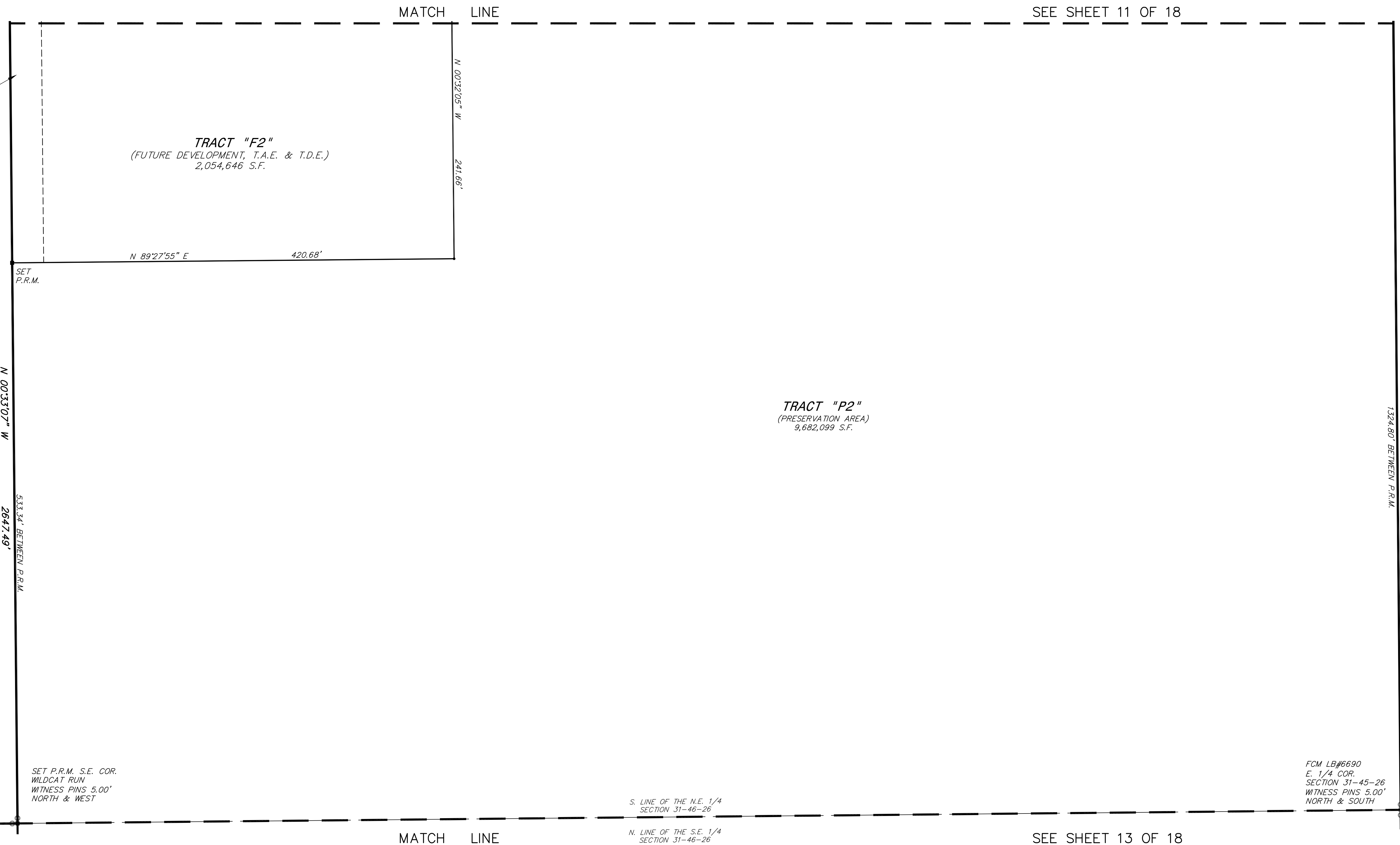
SHEET 12 OF 18

LEGEND

- AC. ACRES
- A.E. ACCESS EASEMENT
- BOB BASIS OF BEARING
- C.R. COUNTY ROAD
- D.E. DRAINAGE EASEMENT
- (E) EASEMENT TIE
- E.A.E. EMERGENCY ACCESS EASEMENT
- FCM FOUND CONCRETE MONUMENT
- FIP FOUND IRON PIPE
- FPKD FOUND PK NAIL & DISK
- F.P.L.E. FLORIDA POWER AND LIGHT EASEMENT
- ID. IDENTIFICATION
- I.E. IRRIGATION EASEMENT
- LB LICENSED BUSINESS
- L.B.E. LANDSCAPE BUFFER EASEMENT
- L.C.U.E. LEE COUNTY UTILITIES EASEMENT
- L.M.A.E. LAKE MAINTENANCE AND ACCESS EASEMENT
- L.M.E. LAKE MAINTENANCE EASEMENT
- N.R. NON-RADIAL
- O.R. OFFICIAL RECORDS BOOK
- P.C. POINT OF CURVATURE
- P.C.P. PERMANENT CONTROL POINT
- P.I. POINT OF INTERSECTION
- P.R.M. PERMANENT REFERENCE MONUMENT
- P.S.M. PROFESSIONAL SURVEYOR & MAPPER
- P.T. POINT OF TANGENT
- P.U.E. PUBLIC UTILITY EASEMENT
- R.D.E. REGIONAL DRAINAGE EASEMENT
- R.O.W. RIGHT-OF-WAY
- SEC. SECTION
- S.F. SQUARE FEET
- T.A.E. TEMPORARY ACCESS EASEMENT
- T.D.E. TEMPORARY DRAINAGE EASEMENT
- # NUMBER

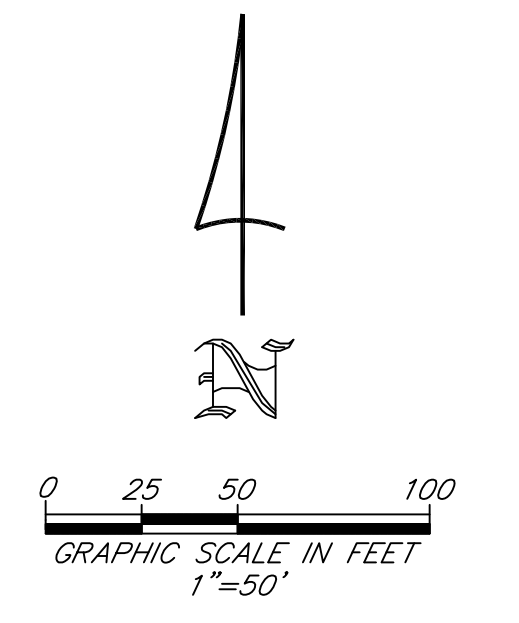
SYMBOLS

- SET PERMANENT REFERENCE MONUMENT
(5/8"x18" IRON ROD CAPPED "PRM LB 6897")
- FOUND PERMANENT REFERENCE MONUMENT
(5/8"x18" IRON ROD CAPPED "PRM LB 6897")
(UNLESS OTHERWISE NOTED)
- PERMANENT CONTROL POINT
(MAGNETIC NAIL & DISK STAMPED "PCP LB 6897")
- INDICATES POINT OF INTERSECTION, POINT OF CURVATURE,
POINT OF TANGENCY OR POINT OF REVERSE CURVATURE.
- Ⓢ CENTERLINE OF RIGHT OF WAY
- SET WITNESS PIN 5.00' EACH WAY ON LINE
AT ALL FOUND MONUMENTS
(5/8"x18" IRON ROD CAPPED "WITNESS LB 6897")



D02020-E008 / PLT2021-E001

1324.80' BETWEEN P.R.M. BELLA TERRA UNIT SIXTEEN INSTRUMENT NO. 201200054679



THIS INSTRUMENT PREPARED BY:
 JOHN SCOTT RHODES P.S.M. #5739
RHODES & RHODES
 LAND SURVEYING, INC.
 28100 BONITA GRANDE DRIVE, SUITE #107
 BONITA SPRINGS, FL 34135
 (239) 405-8166 FAX NO. (239) 405-8163
 FLORIDA BUSINESS LICENSE NO. LB 6897

RIVERCREEK - PHASE ONE

A SUBDIVISION LYING IN
 SECTIONS 19, 30, AND 31, TOWNSHIP 46 SOUTH, RANGE 26 EAST,
 VILLAGE OF ESTERO, LEE COUNTY, FLORIDA

INSTRUMENT# _____

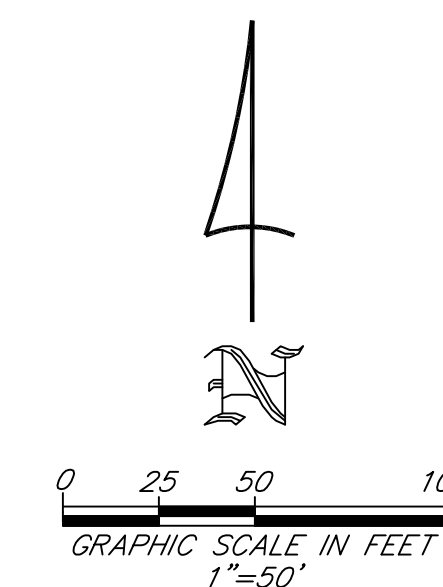
SHEET 13 OF 18

LEGEND

- AC. ACRES
- A.E. ACCESS EASEMENT
- BOB BASIS OF BEARING
- C.R. COUNTY ROAD
- D.E. DRAINAGE EASEMENT
- (E) EASEMENT TIE
- E.A.E. EMERGENCY ACCESS EASEMENT
- FCM FOUND CONCRETE MONUMENT
- FIP FOUND IRON PIPE
- FPKD FOUND PK NAIL & DISK
- F.P.L.E. FLORIDA POWER AND LIGHT EASEMENT
- ID. IDENTIFICATION
- I.E. IRRIGATION EASEMENT
- LB. LICENSED BUSINESS
- L.B.E. LANDSCAPE BUFFER EASEMENT
- L.C.U.E. LEE COUNTY UTILITIES EASEMENT
- L.M.A.E. LAKE MAINTENANCE AND ACCESS EASEMENT
- L.M.E. LAKE MAINTENANCE EASEMENT
- N.R. NON-RADIAL
- O.R. OFFICIAL RECORDS BOOK
- P.C. POINT OF CURVATURE
- P.C.P. PERMANENT CONTROL POINT
- P.I. POINT OF INTERSECTION
- P.R.M. PERMANENT REFERENCE MONUMENT
- P.S.M. PROFESSIONAL SURVEYOR & MAPPER
- P.T. POINT OF TANGENT
- P.U.E. PUBLIC UTILITY EASEMENT
- R.D.E. REGIONAL DRAINAGE EASEMENT
- R.O.W. RIGHT-OF-WAY
- SEC. SECTION
- S.F. SQUARE FEET
- T.A.E. TEMPORARY ACCESS EASEMENT
- T.D.E. TEMPORARY DRAINAGE EASEMENT
- # NUMBER

SYMBOLS

- SET PERMANENT REFERENCE MONUMENT
(5/8"x1/8" IRON ROD CAPPED "PRM LB 6897")
- FOUND PERMANENT REFERENCE MONUMENT
(5/8"x1/8" IRON ROD CAPPED "PRM LB 6897")
(UNLESS OTHERWISE NOTED)
- PERMANENT CONTROL POINT
(MAGNETIC NAIL & DISK STAMPED "PCP LB 6897")
- INDICATES POINT OF INTERSECTION, POINT OF CURVATURE,
POINT OF TANGENCY OR POINT OF REVERSE CURVATURE.
- ⊙ CENTERLINE OF RIGHT OF WAY
- SET WITNESS PIN 5.00' EACH WAY ON LINE
AT ALL FOUND MONUMENTS
(5/8"x1/8" IRON ROD CAPPED "WITNESS LB 6897")



S 00132137 E 2946.76'
 1323.38' BETWEEN P.R.M.
 BELLA TERRA UNIT TWO
 PLAT BOOK 81, PAGES 1-36

SET P.R.M. S.E. COR.
 WILDCAT RUN
 WITNESS PINS 5.00'
 NORTH & WEST

FCM LB#6690
 E. 1/4 COR.
 SECTION 31-45-26
 WITNESS PINS 5.00'
 NORTH & SOUTH

MATCH LINE SEE SHEET 12 OF 18

S. LINE OF THE N.E. 1/4
 SECTION 31-46-26
 N. LINE OF THE S.E. 1/4
 SECTION 31-46-26

TRACT "P2"
 (PRESERVATION AREA)
 9,682,099 S.F.

MATCH LINE SEE SHEET 14 OF 18

D02020-E008 / PLT2021-E001

MATCH LINE
 SEE SHEET 18 OF 18

THIS INSTRUMENT PREPARED BY:
 JOHN SCOTT RHODES P.S.M. #5739
RHODES & RHODES
 LAND SURVEYING, INC.
 28100 BONITA GRANDE DRIVE, SUITE #107
 BONITA SPRINGS, FL 34135
 (239) 405-8166 FAX NO. (239) 405-8163
 FLORIDA BUSINESS LICENSE NO. LB 6897

RIVERCREEK - PHASE ONE

A SUBDIVISION LYING IN
 SECTIONS 19, 30, AND 31, TOWNSHIP 46 SOUTH, RANGE 26 EAST,
 VILLAGE OF ESTERO, LEE COUNTY, FLORIDA

INSTRUMENT# _____

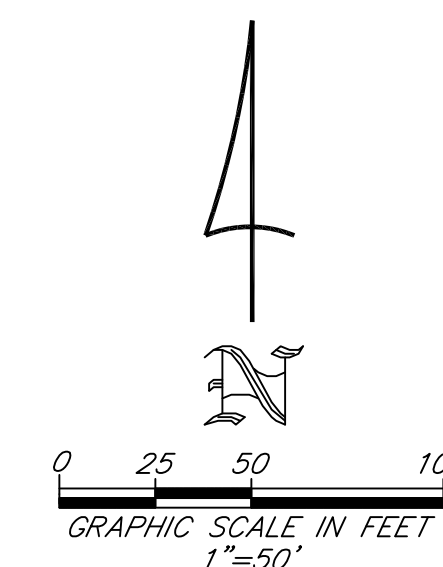
SHEET 14 OF 18

LEGEND

- AC. ACRES
- A.E. ACCESS EASEMENT
- BOB BASIS OF BEARING
- C.R. COUNTY ROAD
- D.E. DRAINAGE EASEMENT
- (E) EASEMENT TIE
- E.A.E. EMERGENCY ACCESS EASEMENT
- FCM FOUND CONCRETE MONUMENT
- FIP FOUND IRON PIPE
- FPKD FOUND PK NAIL & DISK
- F.P.L.E. FLORIDA POWER AND LIGHT EASEMENT
- ID. IDENTIFICATION
- I.E. IRRIGATION EASEMENT
- LB LICENSED BUSINESS
- L.B.E. LANDSCAPE BUFFER EASEMENT
- L.C.U.E. LEE COUNTY UTILITIES EASEMENT
- L.M.A.E. LAKE MAINTENANCE AND ACCESS EASEMENT
- L.M.E. LAKE MAINTENANCE EASEMENT
- N.R. NON-RADIAL
- O.R. OFFICIAL RECORDS BOOK
- P.C. POINT OF CURVATURE
- P.C.P. PERMANENT CONTROL POINT
- P.I. POINT OF INTERSECTION
- P.R.M. PERMANENT REFERENCE MONUMENT
- P.S.M. PROFESSIONAL SURVEYOR & MAPPER
- P.T. POINT OF TANGENT
- P.U.E. PUBLIC UTILITY EASEMENT
- R.D.E. REGIONAL DRAINAGE EASEMENT
- R.O.W. RIGHT-OF-WAY
- SEC. SECTION
- S.F. SQUARE FEET
- T.A.E. TEMPORARY ACCESS EASEMENT
- T.D.E. TEMPORARY DRAINAGE EASEMENT
- # NUMBER

SYMBOLS

- SET PERMANENT REFERENCE MONUMENT
(5/8"x18" IRON ROD CAPPED "PRM LB 6897")
- FOUND PERMANENT REFERENCE MONUMENT
(5/8"x18" IRON ROD CAPPED "PRM LB 6897")
(UNLESS OTHERWISE NOTED)
- PERMANENT CONTROL POINT
(MAGNETIC NAIL & DISK STAMPED "PCP LB 6897")
- INDICATES POINT OF INTERSECTION, POINT OF CURVATURE,
POINT OF TANGENCY OR POINT OF REVERSE CURVATURE.
- CENTERLINE OF RIGHT OF WAY
- SET WITNESS PIN 5.00' EACH WAY ON LINE
AT ALL FOUND MONUMENTS
(5/8"x18" IRON ROD CAPPED "WITNESS LB 6897")



BELLA TERRA UNIT TWO
 PLAT BOOK 81, PAGES 1-36

SET
 P.R.M.

1323.38' BETWEEN P.R.M.

S 00°32'13" E

2946.76'

1323.38' BETWEEN P.R.M.

MATCH LINE SEE SHEET 13 OF 18

TRACT "P2"
 (PRESERVATION AREA)
 9,682,099 S.F.

MATCH LINE SEE SHEET 17 OF 18

MATCH LINE SEE SHEET 15 OF 18

D02020-E008 / PLT2021-E001

THIS INSTRUMENT PREPARED BY:
 JOHN SCOTT RHODES P.S.M. #5739
RHODES & RHODES
 LAND SURVEYING, INC.
 28100 BONITA GRANDE DRIVE, SUITE #107
 BONITA SPRINGS, FL 34135
 (239) 405-8166 FAX NO. (239) 405-8163
 FLORIDA BUSINESS LICENSE NO. LB 6897

RIVERCREEK - PHASE ONE

A SUBDIVISION LYING IN
 SECTIONS 19, 30, AND 31, TOWNSHIP 46 SOUTH, RANGE 26 EAST,
 VILLAGE OF ESTERO, LEE COUNTY, FLORIDA

INSTRUMENT# _____

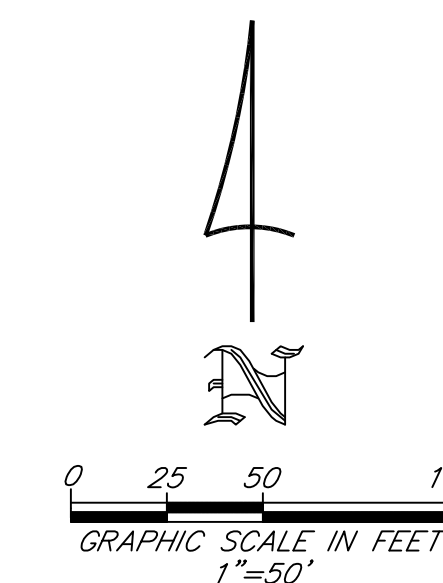
SHEET 15 OF 18

LEGEND

- AC. ACRES
- A.E. ACCESS EASEMENT
- BOB BASIS OF BEARING
- C.R. COUNTY ROAD
- D.E. DRAINAGE EASEMENT
- (E) EASEMENT THE
- E.A.E. EMERGENCY ACCESS EASEMENT
- FCM FOUND CONCRETE MONUMENT
- FIP FOUND IRON PIPE
- FPKD FOUND PK NAIL & DISK
- F.P.L.E. FLORIDA POWER AND LIGHT EASEMENT
- ID. IDENTIFICATION
- I.E. IRRIGATION EASEMENT
- LB. LICENSED BUSINESS
- L.B.E. LANDSCAPE BUFFER EASEMENT
- L.C.U.E. LEE COUNTY UTILITIES EASEMENT
- L.M.A.E. LAKE MAINTENANCE AND ACCESS EASEMENT
- L.M.E. LAKE MAINTENANCE EASEMENT
- N.R. NON-RADIAL
- O.R. OFFICIAL RECORDS BOOK
- P.C. POINT OF CURVATURE
- P.C.P. PERMANENT CONTROL POINT
- P.I. POINT OF INTERSECTION
- P.R.M. PERMANENT REFERENCE MONUMENT
- P.S.M. PROFESSIONAL SURVEYOR & MAPPER
- P.T. POINT OF TANGENCY
- P.U.E. PUBLIC UTILITY EASEMENT
- R.D.E. REGIONAL DRAINAGE EASEMENT
- R.O.W. RIGHT-OF-WAY
- SEC. SECTION
- S.F. SQUARE FEET
- T.A.E. TEMPORARY ACCESS EASEMENT
- T.D.E. TEMPORARY DRAINAGE EASEMENT
- # NUMBER

SYMBOLS

- SET PERMANENT REFERENCE MONUMENT
(5/8"x18" IRON ROD CAPPED "PRM LB 6897")
- FOUND PERMANENT REFERENCE MONUMENT
(5/8"x18" IRON ROD CAPPED "PRM LB 6897")
(UNLESS OTHERWISE NOTED)
- PERMANENT CONTROL POINT
(MAGNETIC NAIL & DISK STAMPED "PCP LB 6897")
- INDICATES POINT OF INTERSECTION, POINT OF CURVATURE,
POINT OF TANGENCY OR POINT OF REVERSE CURVATURE.
- CENTERLINE OF RIGHT OF WAY
- SET WITNESS PIN 5.00' EACH WAY ON LINE
AT ALL FOUND MONUMENTS
(5/8"x18" IRON ROD CAPPED "WITNESS LB 6897")



MATCH LINE SEE SHEET 14 OF 18

TRACT "P2"
 (PRESERVATION AREA)
 9,682,099 S.F.

1323.39' BETWEEN P.R.M.

S 00°32'13" E

2846.78' PLAT BOOK B1, PAGES 1-36

BELLA TERRA UNIT TWO

P.O.B.
 SOUTHEAST CORNER OF
 SECTION 31-46-26

FCM NO. ID. STAMPED
 31/32 T46S R26E
 5/8 T47S R26E
 S.E. SEC. COR.
 WITNESS PINS 5.00'
 NORTH & WEST

SOUTH LINE SECTION 31 TOWNSHIP 46 SOUTH RANGE 26 EAST
 1316.17' BETWEEN P.R.M.

S 89°16'01" W 2632.34'

LEE COUNTY C/O CONSERVATION 2020
 STRAP: 06-47-26-00-00001.0000 FOLIO ID: 10352130

THIS INSTRUMENT PREPARED BY:
 JOHN SCOTT RHODES P.S.M. #5739
RHODES & RHODES
 LAND SURVEYING, INC.
 28100 BONITA GRANDE DRIVE, SUITE #107
 BONITA SPRINGS, FL 34135
 (239) 405-8166 FAX NO. (239) 405-8163
 FLORIDA BUSINESS LICENSE NO. LB 6897
 LEE COUNTY C/O
 CONSERVATION 2020
 STRAP: 05-47-26-00-00001.0000
 FOLIO ID: 10352129

MATCH LINE SEE SHEET 16 OF 18

SET
 P.R.M.

D02020-E008 / PLT2021-E001

RIVERCREEK - PHASE ONE

INSTRUMENT# _____

SHEET 16 OF 18

A SUBDIVISION LYING IN
 SECTIONS 19, 30, AND 31, TOWNSHIP 46 SOUTH, RANGE 26 EAST,
 VILLAGE OF ESTERO, LEE COUNTY, FLORIDA

LEGEND

- AC. ACRES
- A.E. ACCESS EASEMENT
- BOB BASIS OF BEARING
- C.R. COUNTY ROAD
- D.E. DRAINAGE EASEMENT
- (E) EASEMENT TIE
- E.A.E. EMERGENCY ACCESS EASEMENT
- FCM FOUND CONCRETE MONUMENT
- FIP FOUND IRON PIPE
- FPKD FOUND PK NAIL & DISK
- F.P.L.E. FLORIDA POWER AND LIGHT EASEMENT
- ID. IDENTIFICATION
- I.E. IRRIGATION EASEMENT
- LB. LICENSED BUSINESS
- L.B.E. LANDSCAPE BUFFER EASEMENT
- L.C.U.E. LEE COUNTY UTILITIES EASEMENT
- L.M.A.E. LAKE MAINTENANCE AND ACCESS EASEMENT
- L.M.E. LAKE MAINTENANCE EASEMENT
- N.R. NON-RADIAL
- O.R. OFFICIAL RECORDS BOOK
- P.C. POINT OF CURVATURE
- P.C.P. PERMANENT CONTROL POINT
- P.I. POINT OF INTERSECTION
- P.R.M. PERMANENT REFERENCE MONUMENT
- P.S.M. PROFESSIONAL SURVEYOR & MAPPER
- P.T. POINT OF TANGENT
- P.U.E. PUBLIC UTILITY EASEMENT
- R.D.E. REGIONAL DRAINAGE EASEMENT
- R.O.W. RIGHT-OF-WAY
- SEC. SECTION
- S.F. SQUARE FEET
- T.A.E. TEMPORARY ACCESS EASEMENT
- T.D.E. TEMPORARY DRAINAGE EASEMENT
- # NUMBER

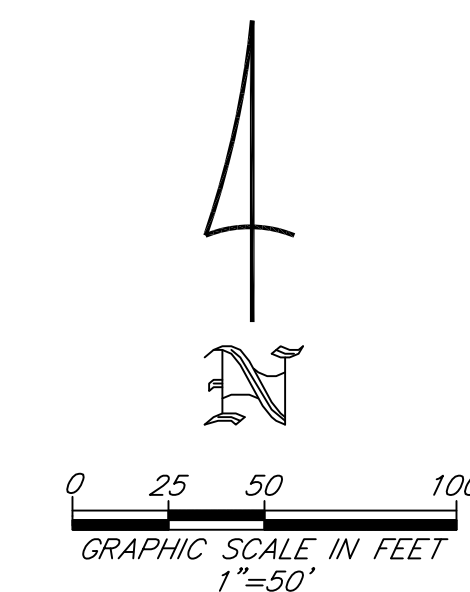
SYMBOLS

- SET PERMANENT REFERENCE MONUMENT
(5/8"x18" IRON ROD CAPPED "PRM LB 6897")
- FOUND PERMANENT REFERENCE MONUMENT
(5/8"x18" IRON ROD CAPPED "PRM LB 6897")
(UNLESS OTHERWISE NOTED)
- PERMANENT CONTROL POINT
(MAGNETIC NAIL & DISK STAMPED "PCP LB 6897")
- INDICATES POINT OF INTERSECTION, POINT OF CURVATURE,
POINT OF TANGENCY OR POINT OF REVERSE CURVATURE.
- ⊕ CENTERLINE OF RIGHT OF WAY
- SET WITNESS PIN 5.00' EACH WAY ON LINE
AT ALL FOUND MONUMENTS
(5/8"x18" IRON ROD CAPPED "WITNESS LB 6897")

MATCH LINE SEE SHEET 17 OF 18

MATCH LINE SEE SHEET 15 OF 18

TRACT "P2"
 (PRESERVATION AREA)
 9,682,099 S.F.



WEST LINE SE 1/4 SECTION 31 TOWNSHIP 46 SOUTH RANGE 26 EAST
 N 00°33'14" W 2864.44'
 1327.22' BETWEEN P.R.M.
 PRESERVE AT CORKSCREW MASTER ASSOCIATION INC.
 STRAP: 31-46-26-E4-U2498.2286 Folio ID: 10351956

FCM NO. ID. STAMPED
 1/4 31 T46S R26E
 1/4 6 T47S R26E
 WITNESS PINS 5.00'
 NORTH & EAST

SOUTH LINE SECTION 31 TOWNSHIP 46 SOUTH RANGE 26 EAST
 1316.17' BETWEEN P.R.M.

S 89°16'01" W 2632.34'

LEE COUNTY C/O CONSERVATION 2020
 STRAP: 06-47-26-00-00001.0000 FOLIO ID: 10352130

SET P.R.M.

THIS INSTRUMENT PREPARED BY:
 JOHN SCOTT RHODES P.S.M. #5739
RHODES & RHODES
 LAND SURVEYING, INC.
 28100 BONITA GRANDE DRIVE, SUITE #107
 BONITA SPRINGS, FL 34135
 (239) 405-8166 FAX NO. (239) 405-8163
 FLORIDA BUSINESS LICENSE NO. LB 6897

D02020-E008 / PLT2021-E001

RIVERCREEK - PHASE ONE

INSTRUMENT# _____

SHEET 17 OF 18

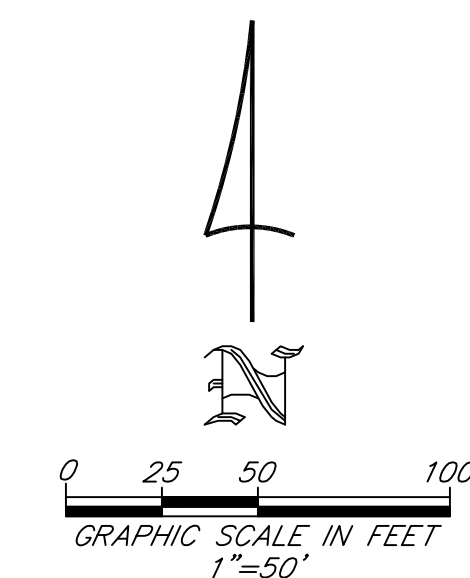
A SUBDIVISION LYING IN
 SECTIONS 19, 30, AND 31, TOWNSHIP 46 SOUTH, RANGE 26 EAST,
 VILLAGE OF ESTERO, LEE COUNTY, FLORIDA

LEGEND

- AC. ACRES
- A.E. ACCESS EASEMENT
- BOB BASIS OF BEARING
- C.R. COUNTY ROAD
- D.E. DRAINAGE EASEMENT
- (E) EASEMENT TIE
- E.A.E. EMERGENCY ACCESS EASEMENT
- FCM FOUND CONCRETE MONUMENT
- FIP FOUND IRON PIPE
- FPKD FOUND PK NAIL & DISK
- F.P.L.E. FLORIDA POWER AND LIGHT EASEMENT
- ID. IDENTIFICATION
- I.E. IRRIGATION EASEMENT
- LB LICENSED BUSINESS
- L.B.E. LANDSCAPE BUFFER EASEMENT
- L.C.U.E. LEE COUNTY UTILITIES EASEMENT
- L.M.A.E. LAKE MAINTENANCE AND ACCESS EASEMENT
- L.M.E. LAKE MAINTENANCE EASEMENT
- N.R. NON-RADIAL
- O.R. OFFICIAL RECORDS BOOK
- P.C. POINT OF CURVATURE
- P.C.P. PERMANENT CONTROL POINT
- P.I. POINT OF INTERSECTION
- P.R.M. PERMANENT REFERENCE MONUMENT
- P.S.M. PROFESSIONAL SURVEYOR & MAPPER
- P.T. POINT OF TANGENT
- P.U.E. PUBLIC UTILITY EASEMENT
- R.D.E. REGIONAL DRAINAGE EASEMENT
- R.O.W. RIGHT-OF-WAY
- SEC. SECTION
- S.F. SQUARE FEET
- T.A.E. TEMPORARY ACCESS EASEMENT
- T.D.E. TEMPORARY DRAINAGE EASEMENT
- # NUMBER

SYMBOLS

- SET PERMANENT REFERENCE MONUMENT
(5/8"x18" IRON ROD CAPPED "PRM LB 6897")
- FOUND PERMANENT REFERENCE MONUMENT
(5/8"x18" IRON ROD CAPPED "PRM LB 6897")
(UNLESS OTHERWISE NOTED)
- PERMANENT CONTROL POINT
(MAGNETIC NAIL & DISK STAMPED "PCP LB 6897")
- INDICATES POINT OF INTERSECTION, POINT OF CURVATURE,
POINT OF TANGENCY OR POINT OF REVERSE CURVATURE.
- ⊕ CENTERLINE OF RIGHT OF WAY
- SET WITNESS PIN 5.00" EACH WAY ON LINE
AT ALL FOUND MONUMENTS
(5/8"x18" IRON ROD CAPPED "WITNESS LB 6897")



TRACT "P2"
 (PRESERVATION AREA)
 9,682,099 S.F.

MATCH LINE SEE SHEET 18 OF 18

MATCH LINE SEE SHEET 16 OF 18

1,327.22' BETWEEN P.R.M.

WEST LINE SE 1/4 SECTION 31 TOWNSHIP 46 SOUTH RANGE 26 EAST

SET P.R.M.

1,327.22' BETWEEN P.R.M.

N 00°33'14" W 2654.44'
 PRESERVE AT CONKORREW MASTER ASSOCIATION INC.
 STRAP: 31-46-26-E4-U2498.2286 Folio ID: 10351956

D02020-E008 / PLT2021-E001

THIS INSTRUMENT PREPARED BY:
 JOHN SCOTT RHODES P.S.M. #5739
RHODES & RHODES
 LAND SURVEYING, INC.
 28100 BONITA GRANDE DRIVE, SUITE #107
 BONITA SPRINGS, FL 34135
 (239) 405-8166 FAX NO. (239) 405-8163
 FLORIDA BUSINESS LICENSE NO. LB 6897

RIVERCREEK - PHASE ONE

INSTRUMENT# _____

SHEET 18 OF 18

A SUBDIVISION LYING IN
SECTIONS 19, 30, AND 31, TOWNSHIP 46 SOUTH, RANGE 26 EAST,
 VILLAGE OF ESTERO, LEE COUNTY, FLORIDA

WILDCAT RUN PLAT BOOK 36, PAGES 30-43
 TRACT "B" GREEN AREA & DRAINAGE EASEMENT
 SOUTH LINE WILDCAT RUN

N 89°25'55" E

1316.52'

NORTH LINE SE 1/4 SECTION 31 TOWNSHIP 46 SOUTH RANGE 26 EAST

SET P.R.M. S.E. COR.
 WILDCAT RUN
 WITNESS PINS 5.00'
 NORTH & WEST

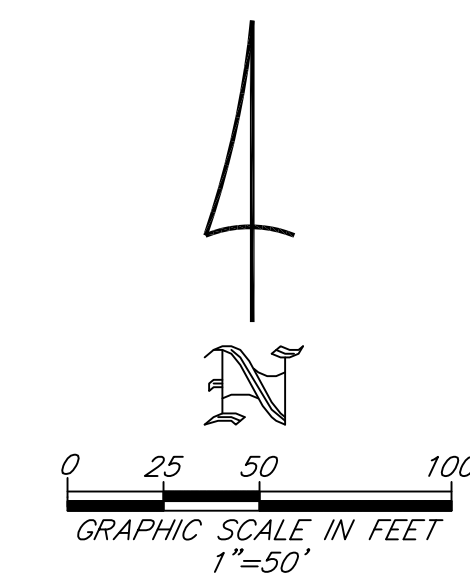
FCM INK ENGINEERING
 CENTER SEC. COR.
 SECTION 31-45-26
 WITNESS PINS 5.00'
 EAST & SOUTH

LEGEND

- AC. ACRES
- A.E. ACCESS EASEMENT
- BOB BASIS OF BEARING
- C.R. COUNTY ROAD
- D.E. DRAINAGE EASEMENT
- (E) EASEMENT TIE
- E.A.E. EMERGENCY ACCESS EASEMENT
- FCM FOUND CONCRETE MONUMENT
- FIP FOUND IRON PIPE
- FPKD FOUND PK NAIL & DISK
- F.P.L.E. FLORIDA POWER AND LIGHT EASEMENT
- ID. IDENTIFICATION
- I.E. IRRIGATION EASEMENT
- LB LICENSED BUSINESS
- L.B.E. LANDSCAPE BUFFER EASEMENT
- L.C.U.E. LEE COUNTY UTILITIES EASEMENT
- L.M.A.E. LAKE MAINTENANCE AND ACCESS EASEMENT
- L.M.E. LAKE MAINTENANCE EASEMENT
- N.R. NON-RADIAL
- O.R. OFFICIAL RECORDS BOOK
- P.C. POINT OF CURVATURE
- P.C.P. PERMANENT CONTROL POINT
- P.I. POINT OF INTERSECTION
- P.R.M. PERMANENT REFERENCE MONUMENT
- P.S.M. PROFESSIONAL SURVEYOR & MAPPER
- P.T. POINT OF TANGENT
- P.U.E. PUBLIC UTILITY EASEMENT
- R.D.E. REGIONAL DRAINAGE EASEMENT
- R.O.W. RIGHT-OF-WAY
- SEC. SECTION
- S.F. SQUARE FEET
- T.A.E. TEMPORARY ACCESS EASEMENT
- T.D.E. TEMPORARY DRAINAGE EASEMENT
- # NUMBER

SYMBOLS

- SET PERMANENT REFERENCE MONUMENT
(5/8"x18" IRON ROD CAPPED "PRM LB 6897")
- FOUND PERMANENT REFERENCE MONUMENT
(5/8"x18" IRON ROD CAPPED "PRM LB 6897")
(UNLESS OTHERWISE NOTED)
- PERMANENT CONTROL POINT
(MAGNETIC NAIL & DISK STAMPED "PCP LB 6897")
- INDICATES POINT OF INTERSECTION, POINT OF CURVATURE,
POINT OF TANGENCY OR POINT OF REVERSE CURVATURE.
- ⊕ CENTERLINE OF RIGHT OF WAY
- SET WITNESS PIN 5.00' EACH WAY ON LINE
AT ALL FOUND MONUMENTS
(5/8"x18" IRON ROD CAPPED "WITNESS LB 6897")



TRACT "P2"
 (PRESERVATION AREA)
 9,682,099 S.F.

MATCH LINE SEE SHEET 13 OF 18

WEST LINE SE 1/4 SECTION 31 TOWNSHIP 46 SOUTH RANGE 26 EAST
 1327.22' BETWEEN P.R.M.

N 00°33'4" W 2854.44'
 PRESERVE AT CORKSCREW MASTER ASSOCIATION INC.
 STRAP: 31-46-26-E4-U2498,2286 Folio ID: 10351956

MATCH LINE SEE SHEET 17 OF 18

THIS INSTRUMENT PREPARED BY:
 JOHN SCOTT RHODES P.S.M. #5739
RHODES & RHODES
 LAND SURVEYING, INC.
 28100 BONITA GRANDE DRIVE, SUITE #107
 BONITA SPRINGS, FL 34135
 (239) 405-8166 FAX NO. (239) 405-8163
 FLORIDA BUSINESS LICENSE NO. LB 6897

D02020-E008 / PLT2021-E001