

CASE #: DOS2022-E012
COPPERLEAF AT THE BROOKS
CLUBHOUSE EXPANSION DEVELOPMENT ORDER

December 13, 2022, Village of Estero Public Information Meeting

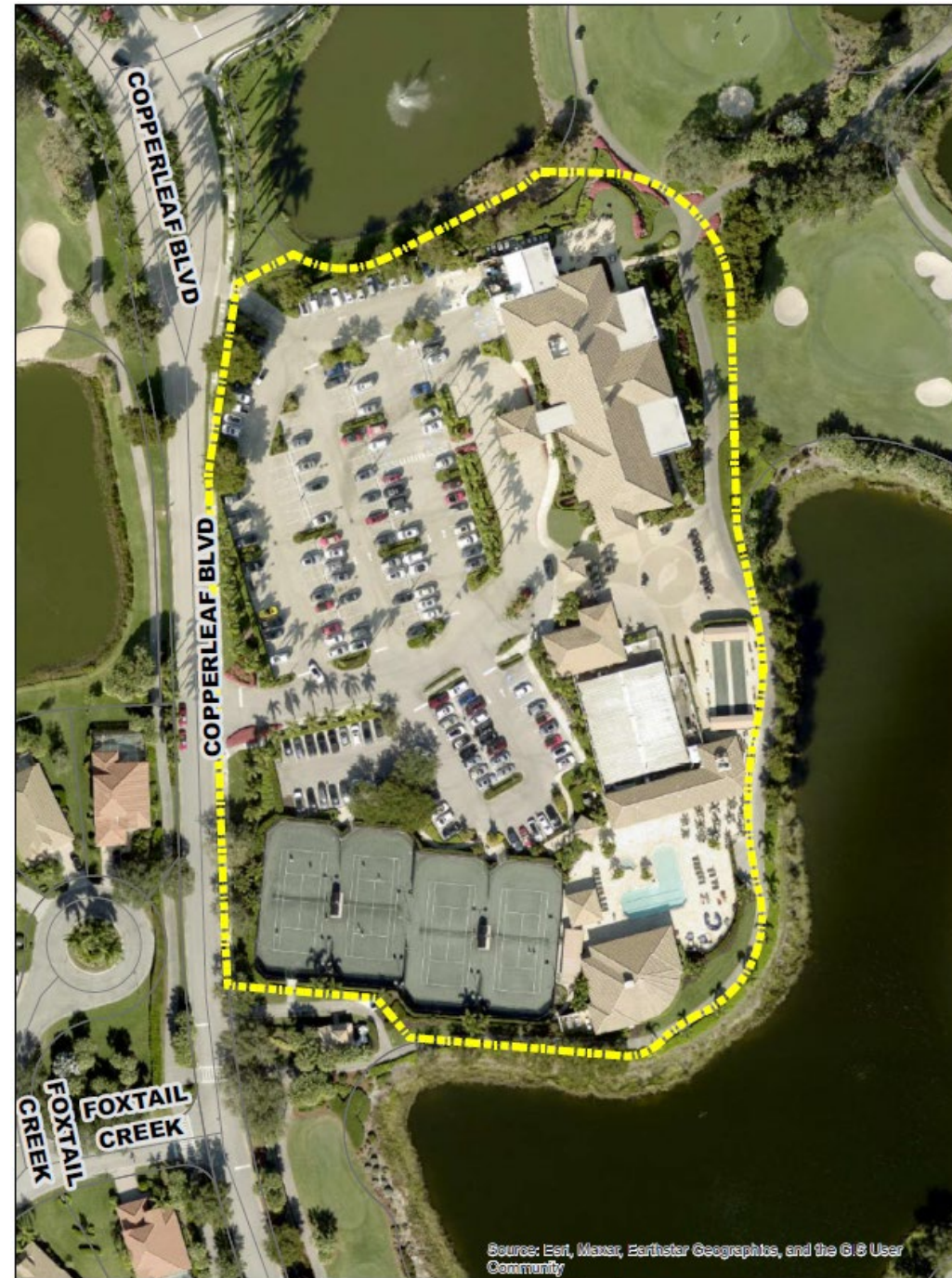
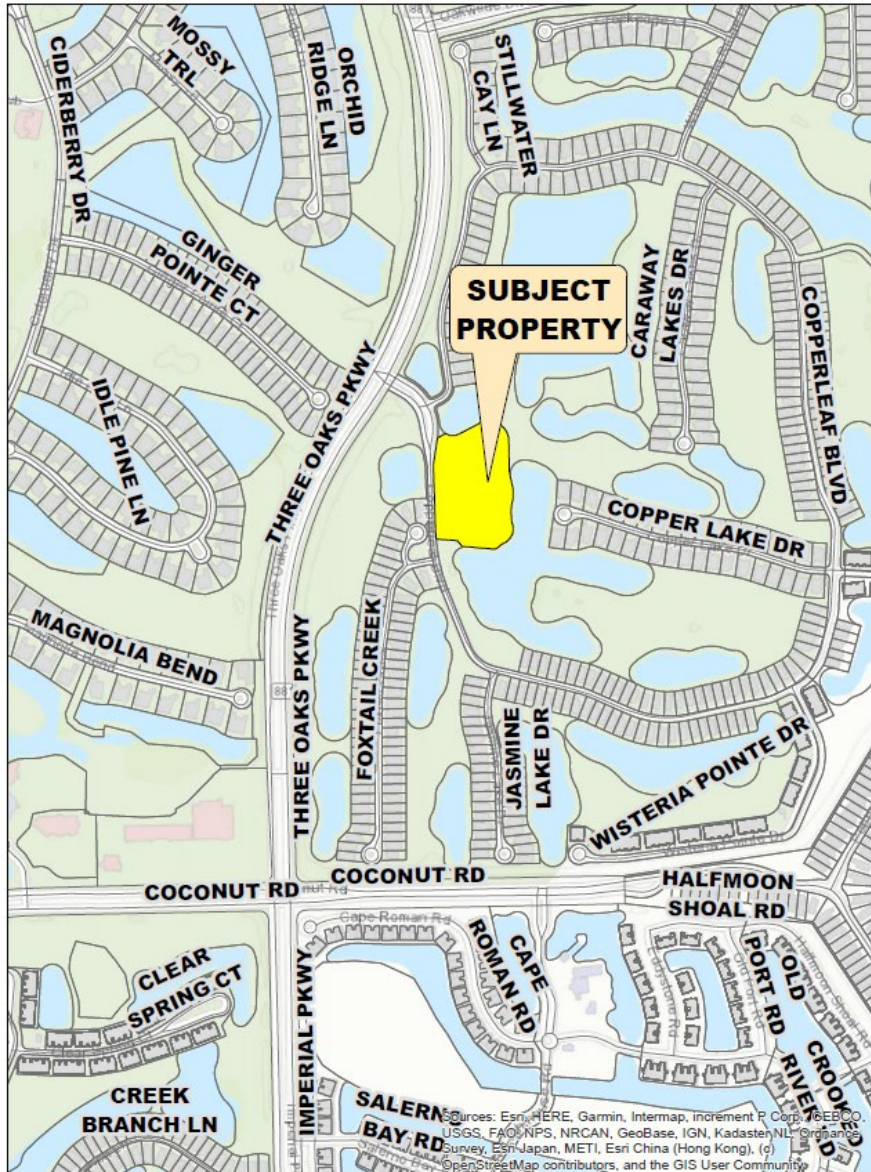


INTRODUCTION

PROJECT TEAM:

- **Copperleaf Golf Club Community Association** – Applicant
- **Frank J. Feeney, P.E., Professional Engineer** – Q. Grady Minor & Associates, P.A.
- **David Humphrey, Architect of Record** – Humphrey Rosal Architects

LOCATION MAP



Source: Esri, Maxar, Earthstar Geographics, and the GIS User Community



PROJECT INFORMATION

STRAP Numbers:

11-47-25-E1-1800D.00CE, 11-47-25-E1-180L5.0000, 11-47-25-E2-230G1.00CE
and 11-47-25-E1-180L4.0000

Current Zoning: Mixed-Use Planned Development

Site Area: 5.72 +/- acres

Project Description: Expansion of the Copperleaf Golf Course Clubhouse, the pool cafe and pool deck, modifications to the golf cart paths and parking areas, the addition of 21 parking spaces and 1 bocce ball court, the infilling of wet detention lakes, and alterations to the clubhouse area landscaping.

CONCEPTUAL RENDERING CLUBHOUSE (REAR)



CONCEPTUAL RENDERING POOL CAFÉ & BAR



PROPOSED COLOR PALETTE AND MATERIALS

**Boral Roof Tile:
Pinto Blend**



**Body Color
Sherwin Williams**

SW 9174
Moth Wing
Interior / Exterior
Location Number: 249-C4

SW 7757
High Reflective White
Interior
Locator Number: 256-C1

Trim Color

**Awnings:
Capriccio Mediterranean**



**Awning Frames:
Tiger Dylac RAL 8028**

**Tremron: Ultra Combo
Sand Dune**



**YKK Aluminum Windows
Bone White**



**Brackets and Louvers:
Sherwin Williams**



CONCLUSION



Thank you for your consideration