



# Northern Monument Sign Concepts

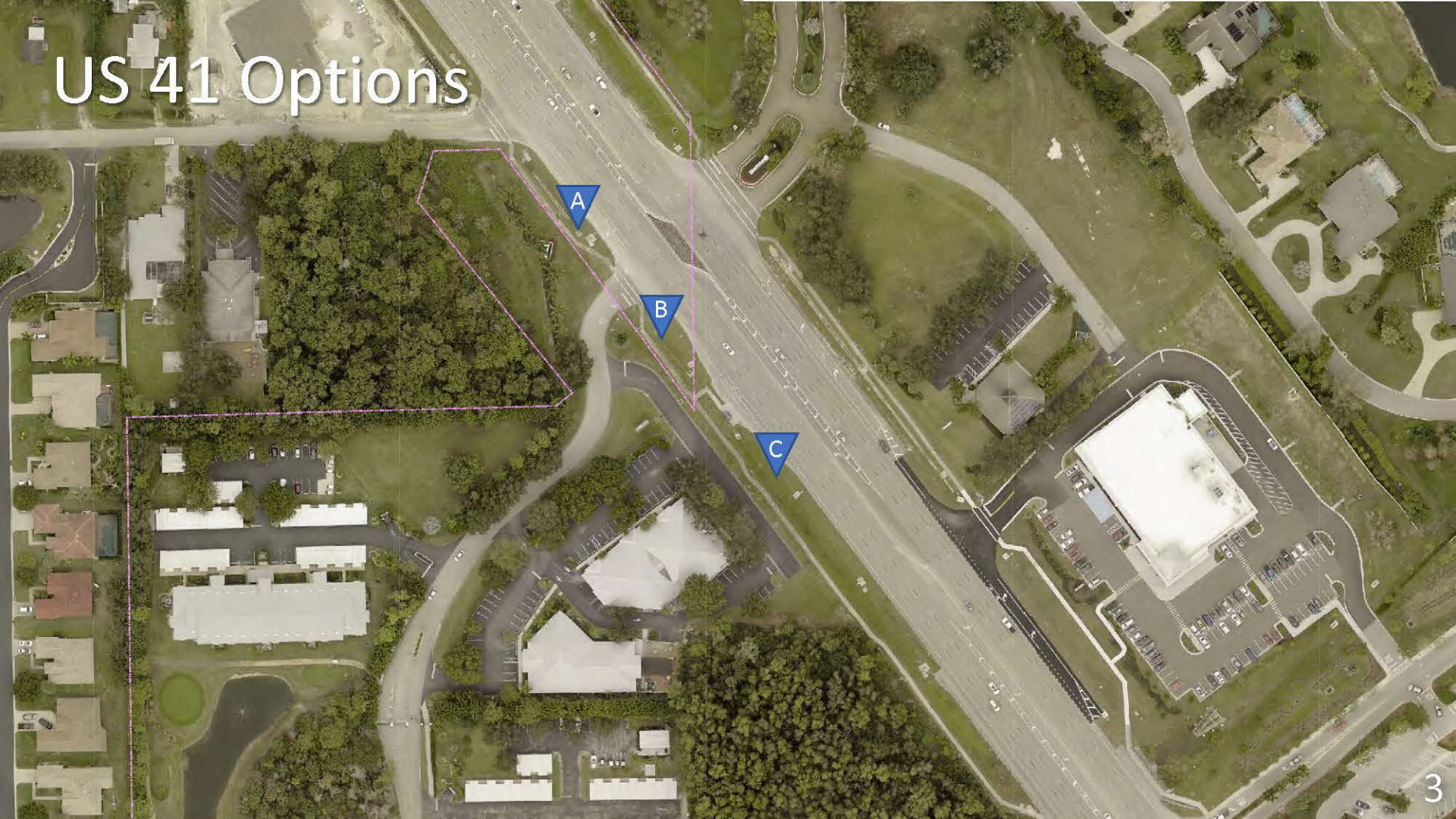
David Willems, P.E.



# Sign Locations



# US 41 Options



A

B

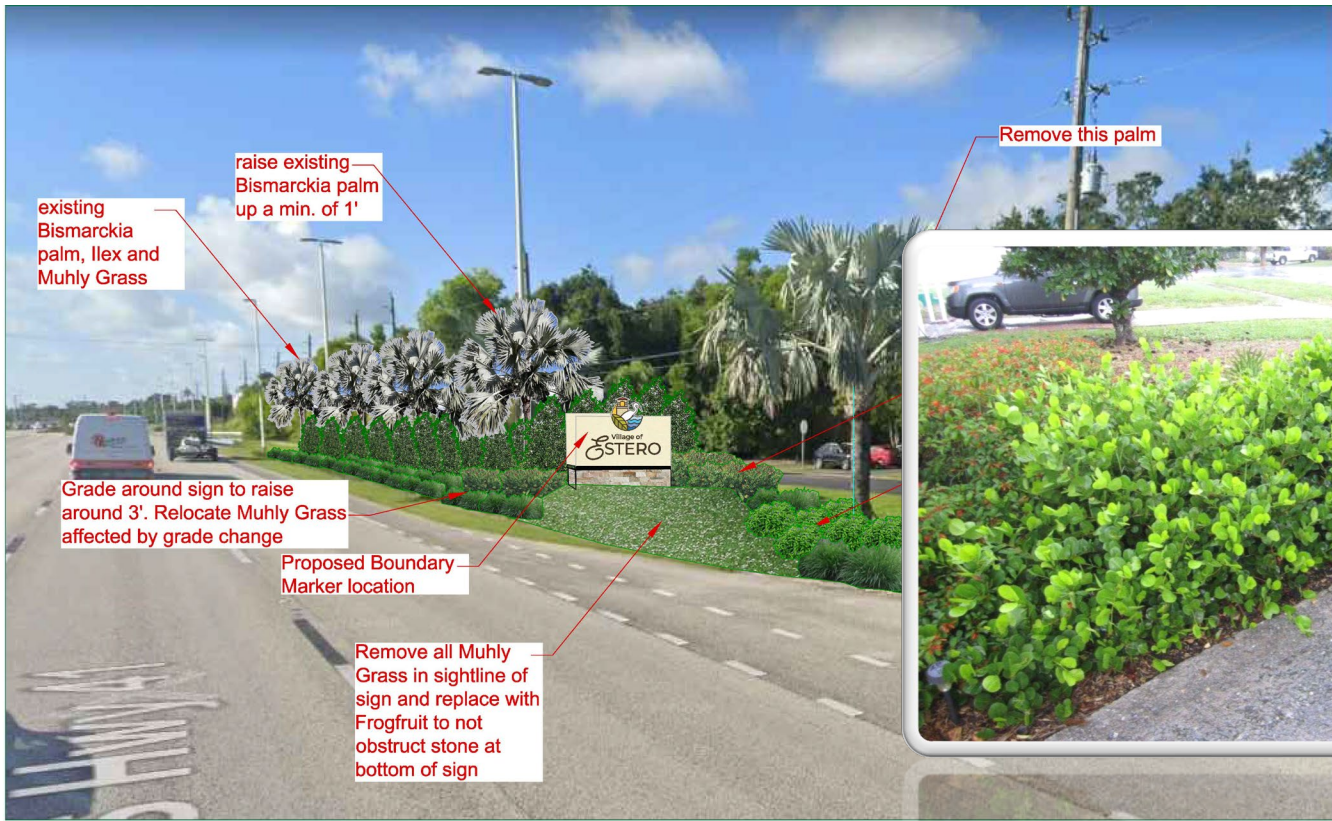
C



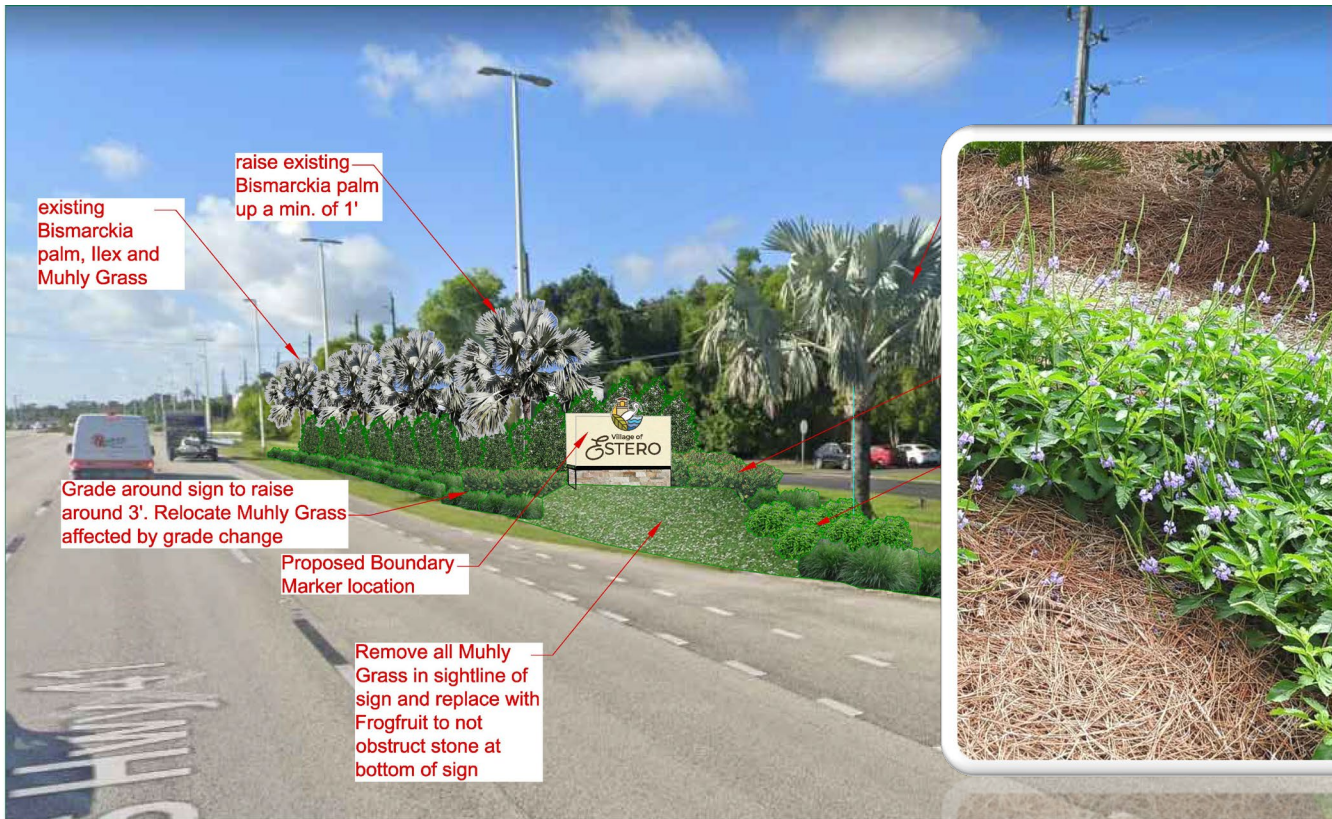
**Location on U.S.41- just South of Breckenridge**



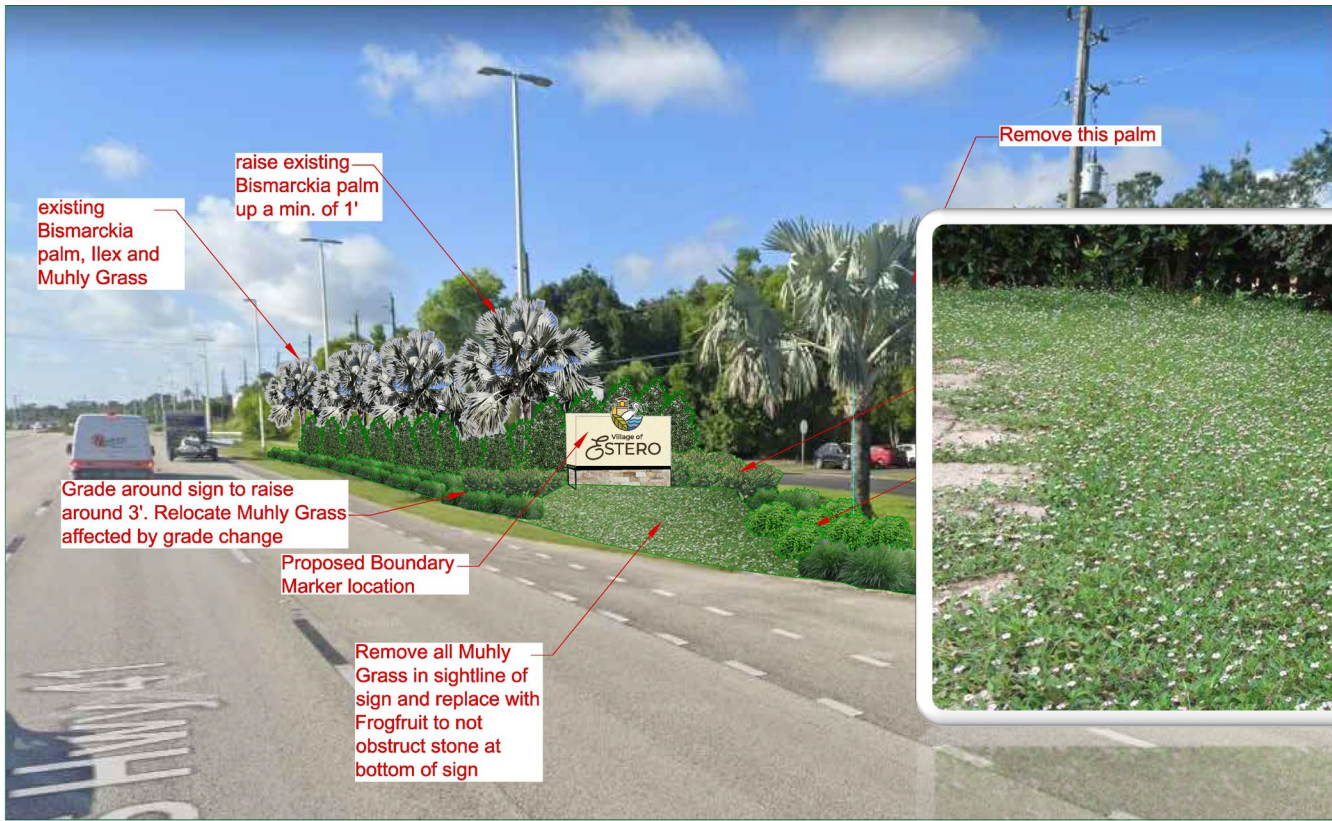
## Perspective View of Proposed North Boundary Marker on U.S.41



## Perspective View of Proposed North Boundary Marker on U.S.41

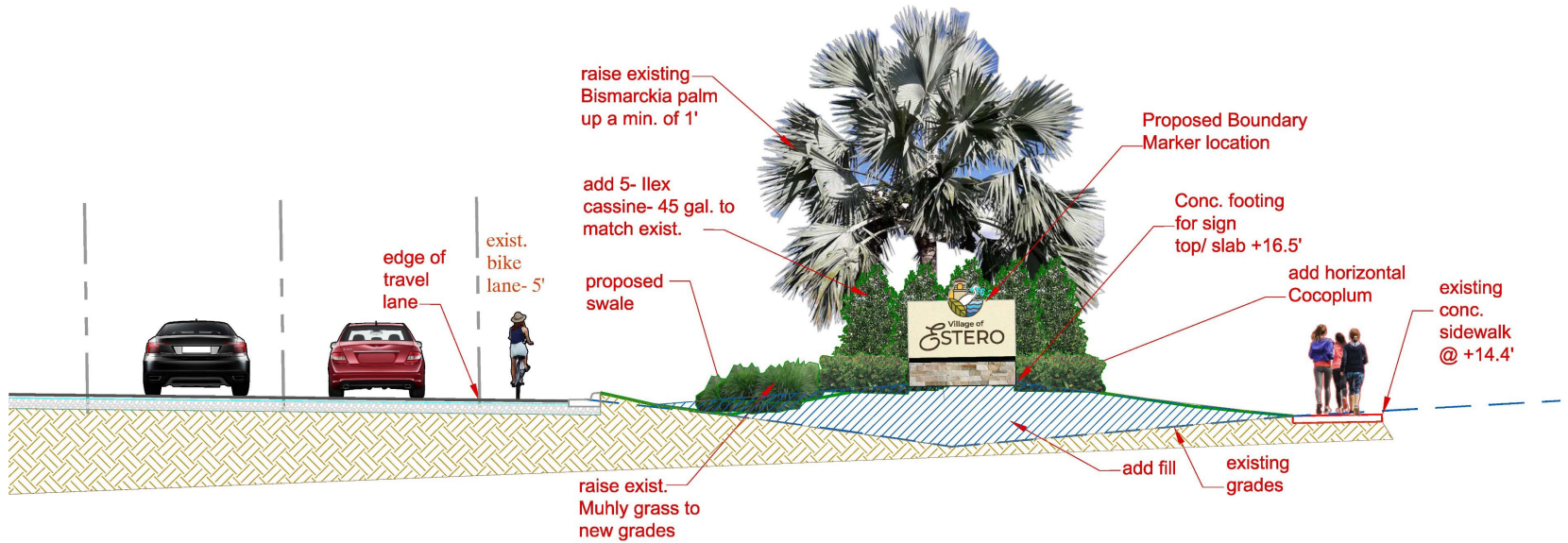


## Perspective View of Proposed North Boundary Marker on U.S.41



## Perspective View of Proposed North Boundary Marker on U.S.41





# Cross Section of Proposed North Boundary Marker on U.S.41

Three Oaks  
Elementary  
School


1

2

3

4





Proposed Boundary -  
Marker location

Location on Three Oaks- just South of Estero Parkway

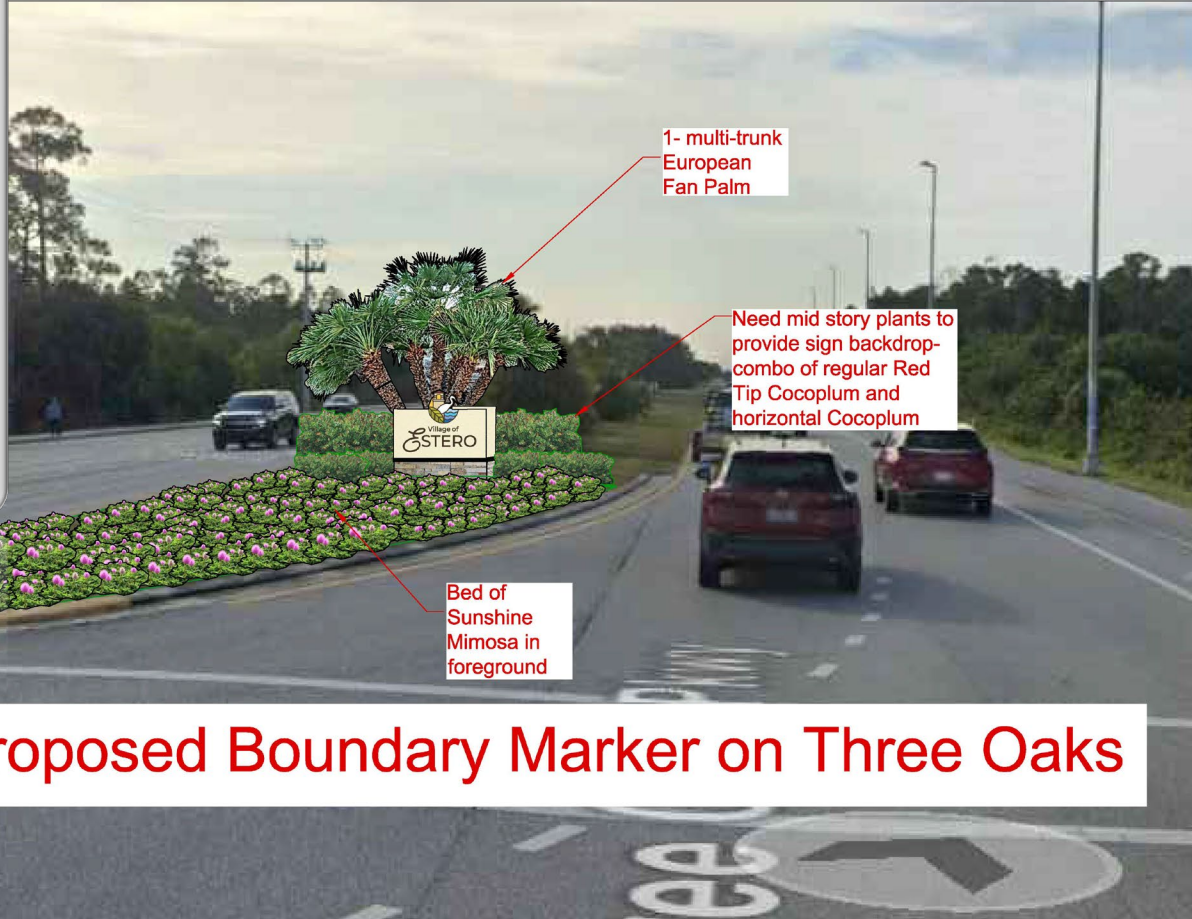


1- multi-trunk  
European  
Fan Palm

Need mid story plants to  
provide sign backdrop-  
combo of regular Red  
Tip Cocoplum and  
horizontal Cocoplum

Bed of  
Sunshine  
Mimosa in  
foreground

# Perspective View of Proposed Boundary Marker on Three Oaks



1- multi-trunk  
European  
Fan Palm

Need mid story plants to  
provide sign backdrop-  
combo of regular Red  
Tip Cocoplum and  
horizontal Cocoplum

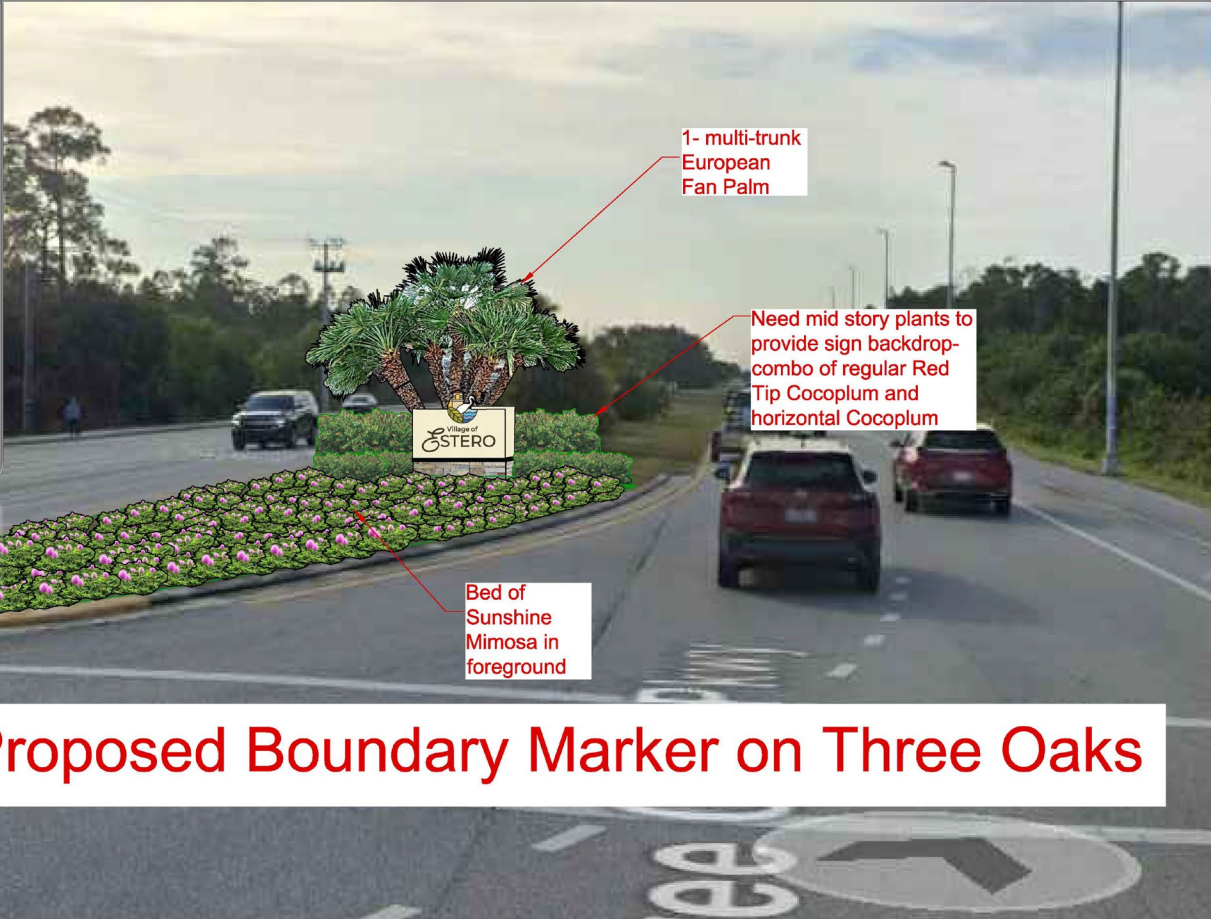
Bed of  
Sunshine  
Mimosa in  
foreground

# Perspective View of Proposed Boundary Marker on Three Oaks



South-Florida-Plant-Guide.com

South-Florida-Plant-Guide.com



1- multi-trunk  
European  
Fan Palm

Need mid story plants to  
provide sign backdrop-  
combo of regular Red  
Tip Cocoplum and  
horizontal Cocoplum

Bed of  
Sunshine  
Mimosa in  
foreground

# Perspective View of Proposed Boundary Marker on Three Oaks



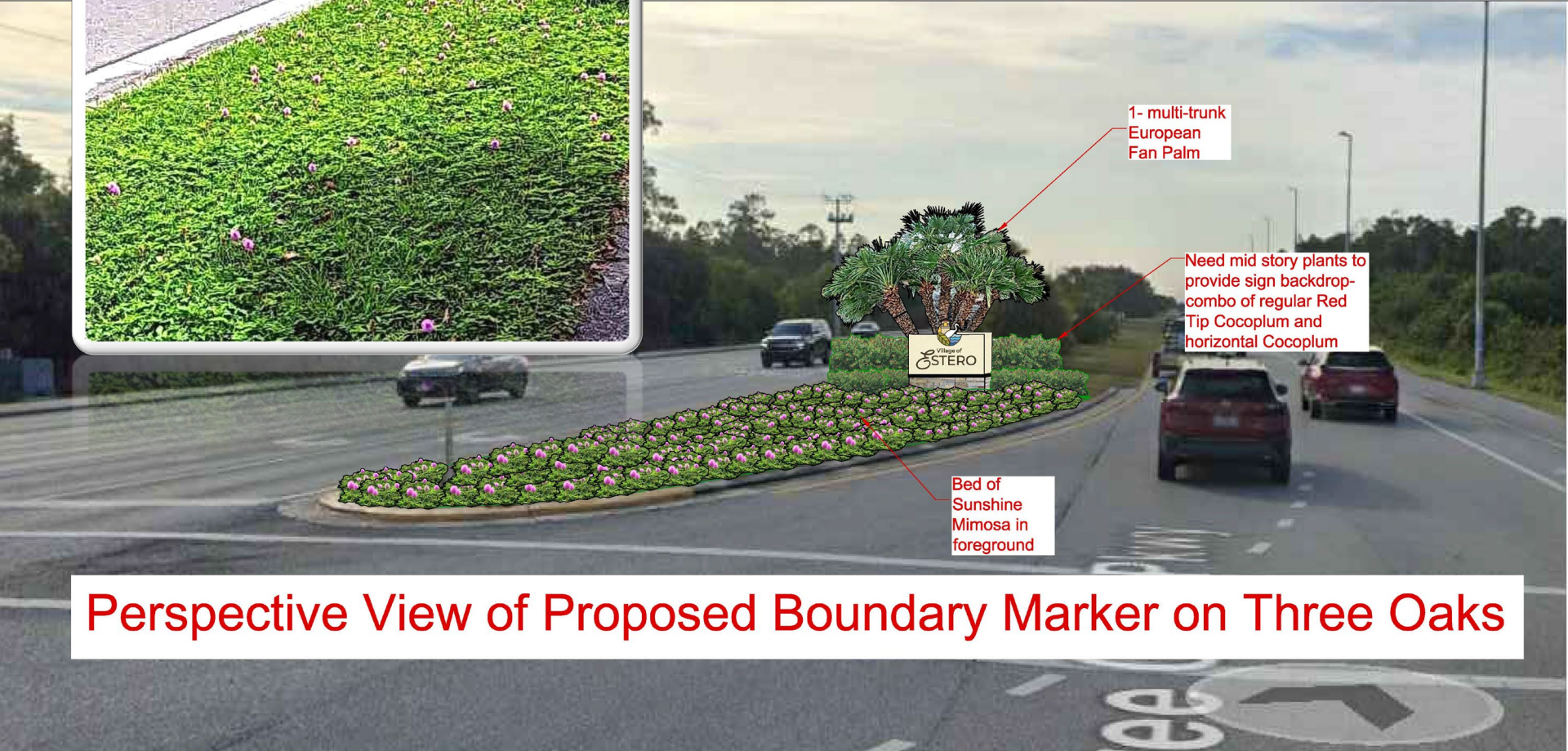
1- multi-trunk  
European  
Fan Palm

Need mid story plants to  
provide sign backdrop-  
combo of regular Red  
Tip Cocoplum and  
horizontal Cocoplum

Bed of  
Sunshine  
Mimosa in  
foreground

# Perspective View of Proposed Boundary Marker on Three Oaks



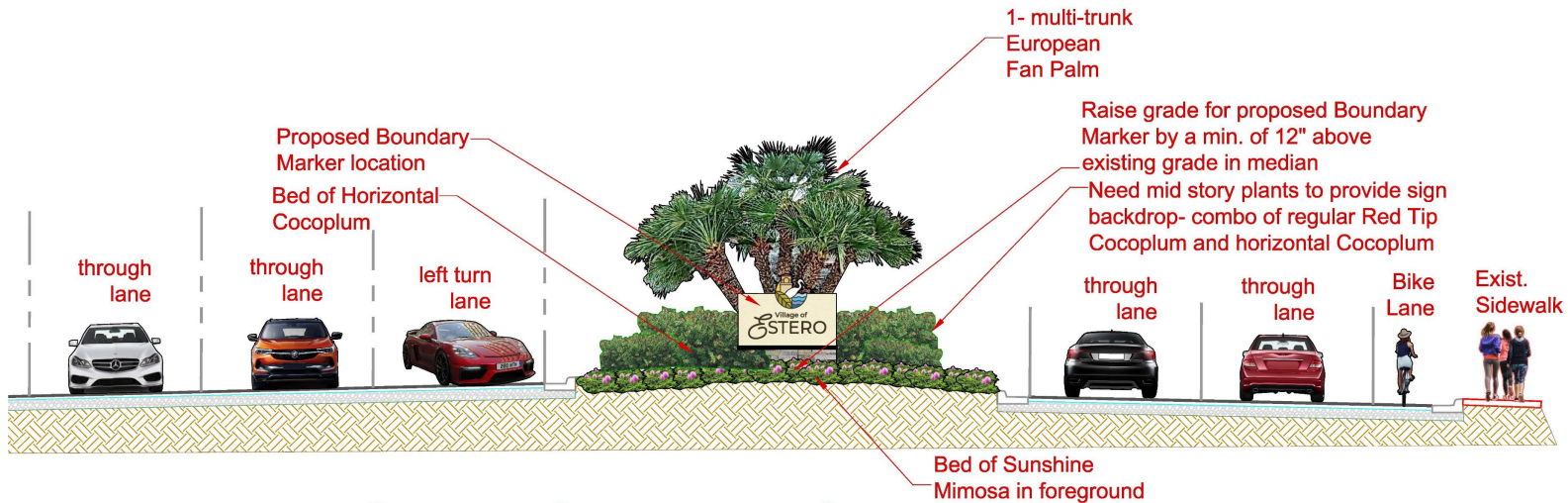


1- multi-trunk  
European  
Fan Palm

Need mid story plants to  
provide sign backdrop-  
combo of regular Red  
Tip Cocoplum and  
horizontal Cocoplum

Bed of  
Sunshine  
Mimosa in  
foreground

# Perspective View of Proposed Boundary Marker on Three Oaks



# Cross Section of Proposed North Boundary Marker on Three Oaks



# QUESTIONS?