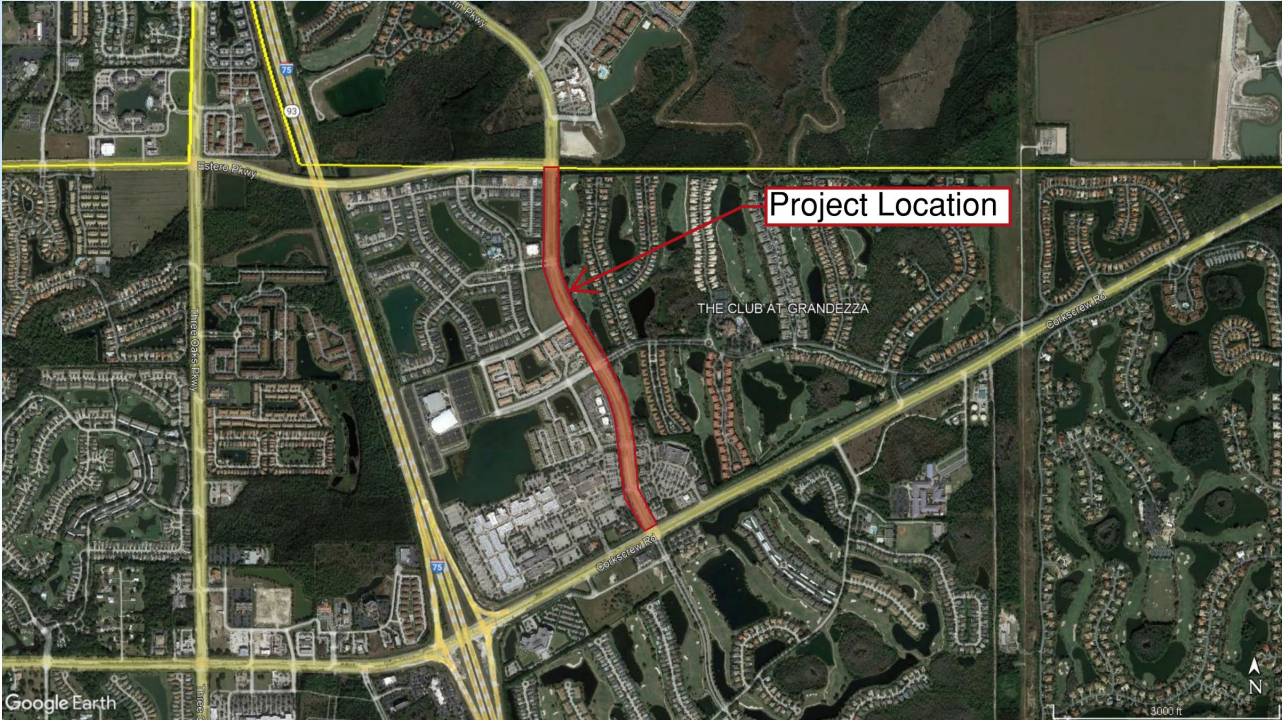




Ben Hill Griffin Parkway Project Update



Location





Project

Landscaping

Sides:

- Constrained due to utilities

- Mostly groundcover and shrubs

Medians:

- Shrubs and trees

- No curb

Sidewalk

- Sidewalk rebuilt in two locations

- Requires easements from Grandezza



Project

Irrigation

Existing uses wells

Proposed reclaimed water

Located on north side of Corkscrew Road

Requires easements from Miromar



Easements

Grandezza

- Agreed to easements in concept

- Working with Lee County on easement language

Miromar

- Preliminary discussion on easements

- Documents will be sent to Miromar Dec/Jan



Design Changes

Median Trees

County will not allow large trees in median due to speed limit and no median curb

Landscape Architect update plans to include smaller trees – coordinating with Lee County for approval.



QUESTIONS?