



THE

GODDARD SCHOOL®

FOR EARLY CHILDHOOD DEVELOPMENT

VILLAGE OF ESTERO

PLANNING, ZONING, & DESIGN REVIEW BOARD

PUBLIC INFORMATION MEETING | DECEMBER 12, 2023

APPLICANT REPRESENTATIVES

TENANT

Mike Thompson



OWNER

Chad Wheatley
Brandon Guy



ENGINEER

Brent Addison, P.E.



ARCHITECT

Cheryl Schweiker, AIA



PROJECT LOCATION



The project site is located in the Plaza Del Sol Subdivision on the SE corner of **Quente Way & Three Oaks Parkway**

Requesting **Development Order** approval for the construction of:

- ± 14,190 SF Early Development School
- ± 5,755 SF Playground
- Parking
- Paving, Grading, and Drainage
- Utility Connections to Lee County Utilities





BANKS
ENGINEERING

BRENT ADDISON, P.E.

EXISTING CONDITIONS

View looking west from Arcos Ave



View looking east from Three Oaks Parkway

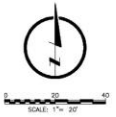
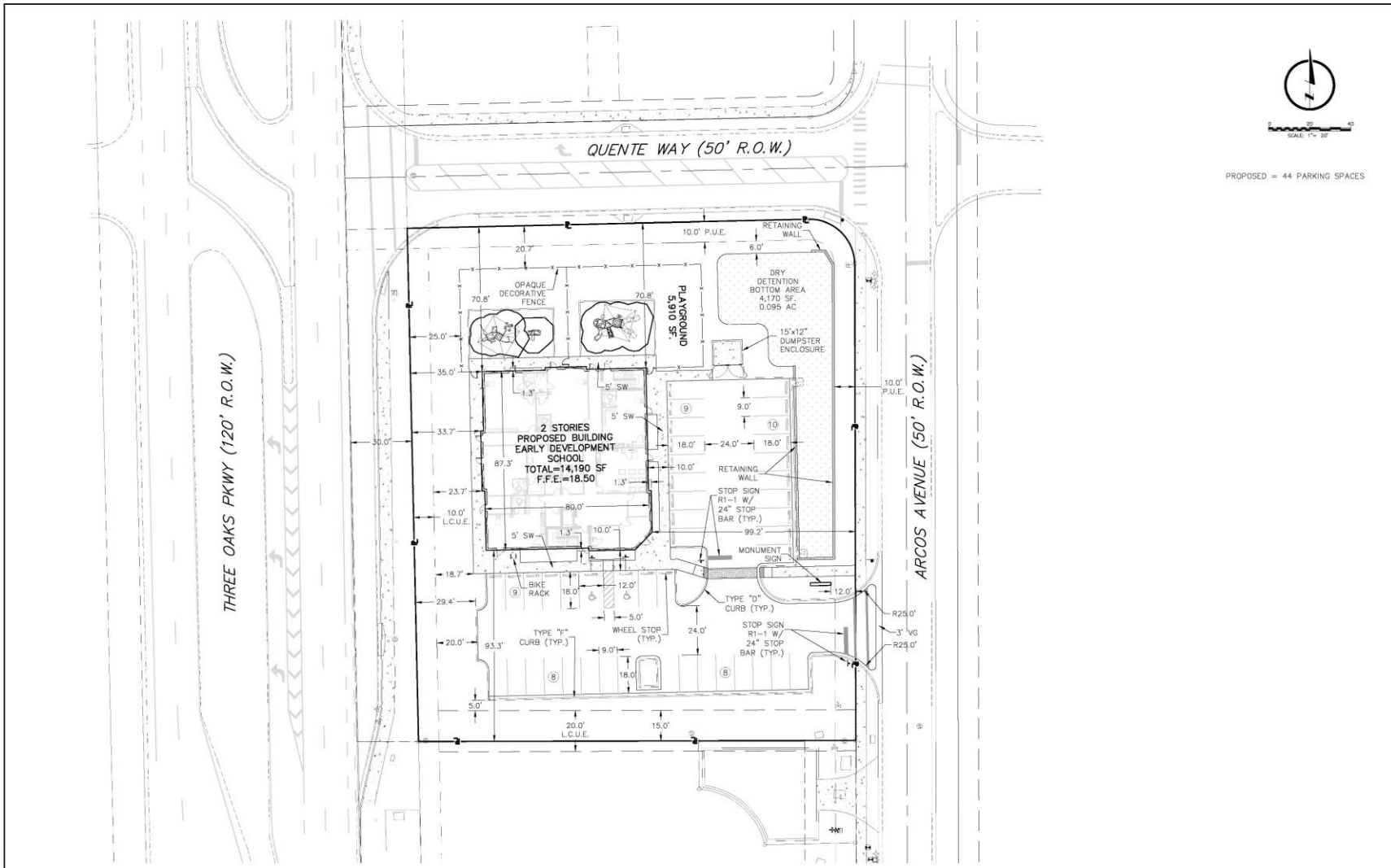


View looking south from Quente Way

SITE PLAN



ISSUE: THE GODDARD SCHOOL



PROPOSED = 44 PARKING SPACES

PREPARED FOR:
FF FLORIDA 1, LLC.
 338 COMLAND DRIVE
 FREEZEVILLE, PA 15332

ALL ELEVATIONS ON CIVIL ENGINEERING PLANS REFERENCE NAVD83

NO.	DATE	REVISION / DESCRIPTION

BANKS ENGINEERING
 Professional Engineers, Planners, & Land Surveyors
 Serving Southeast Florida

10511 SW WILE CRESS PKWY, SUITE 101
 FORT MYERS, FLORIDA 33908
 PHONE: (239) 539-4400
 ENGINEERING LICENSE # EB 8489
 SURVEY LICENSE # LR 8690
 WWW.BANKSENG1A.COM

S. BRENT JOHNSON
 P.E., LIC. #70811

PRELIMINARY SITE PLAN
THE GODDARD SCHOOL
 VILLAGE OF ESTERO, FLORIDA

COMPLETION DATE	PROJECT	DRAWN BY	DESIGNED BY	REVIEWED BY	SCALE	SHEET
11/9/2023	8890	JLS	DBA	DBA	1"=20'	1

© 2023 BANKS ENGINEERING, INC. ALL RIGHTS RESERVED. THIS PLAN IS THE PROPERTY OF BANKS ENGINEERING, INC. AND IS NOT TO BE REPRODUCED OR TRANSMITTED IN ANY FORM OR BY ANY MEANS, ELECTRONIC OR MECHANICAL, WITHOUT PERMISSION IN WRITING FROM BANKS ENGINEERING, INC.

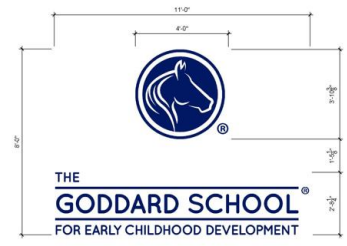




JarmelKizel
ARCHITECTS AND ENGINEERS INC.

CHERYL SCHWEIKER, AIA

SOUTH ELEVATION



4 BUILDING SIGN ELEVATIONS
SCALE: 1/12" = 1'-0"



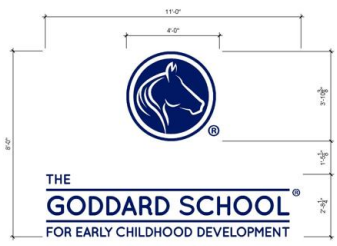
1 SOUTH ELEVATION
SCALE: 1/8" = 1'-0"

NORTH ELEVATION



2 NORTH ELEVATION
SCALE : 1/8" = 1'-0"

EAST ELEVATION



4 BUILDING SIGN ELEVATIONS
SCALE: 1/2" = 1'-0"



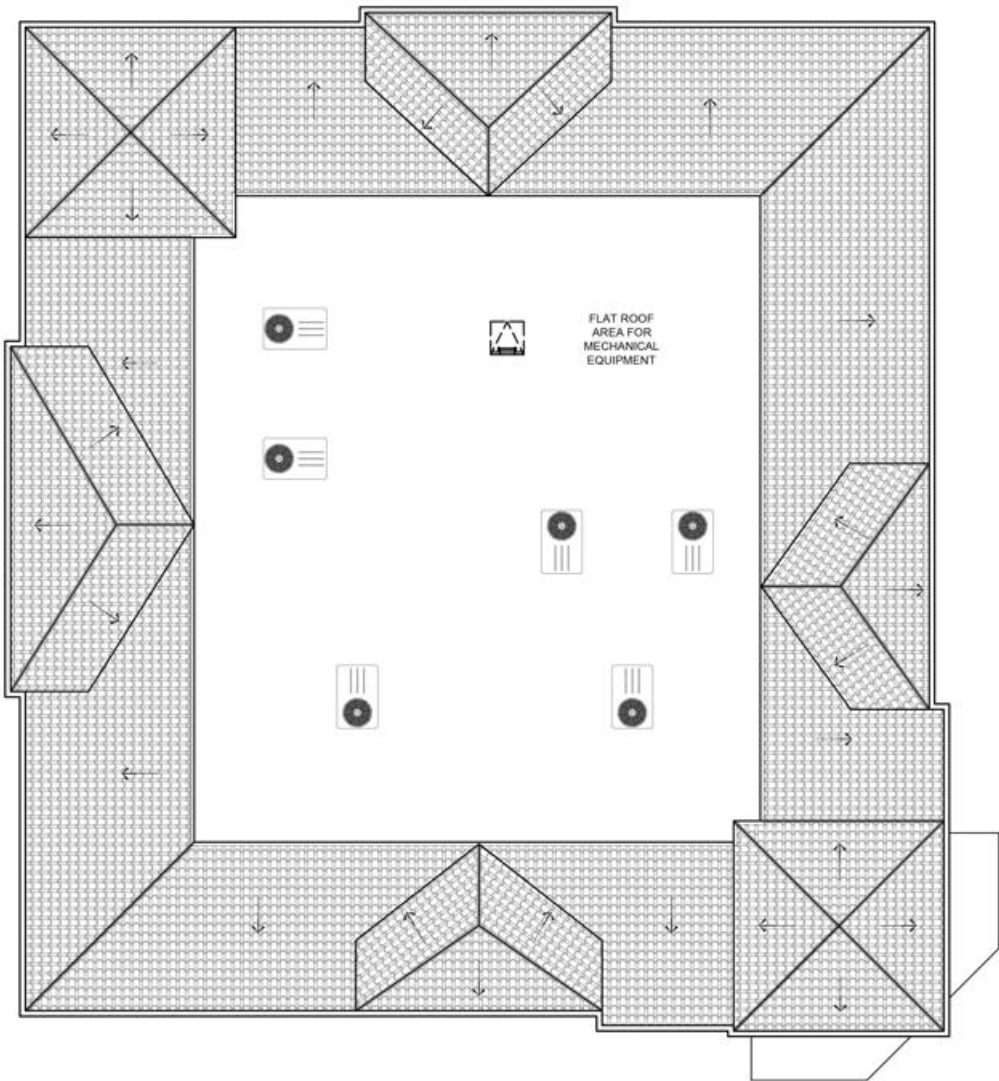
3 EAST ELEVATION
SCALE: 1/8" = 1'-0"

WEST ELEVATION



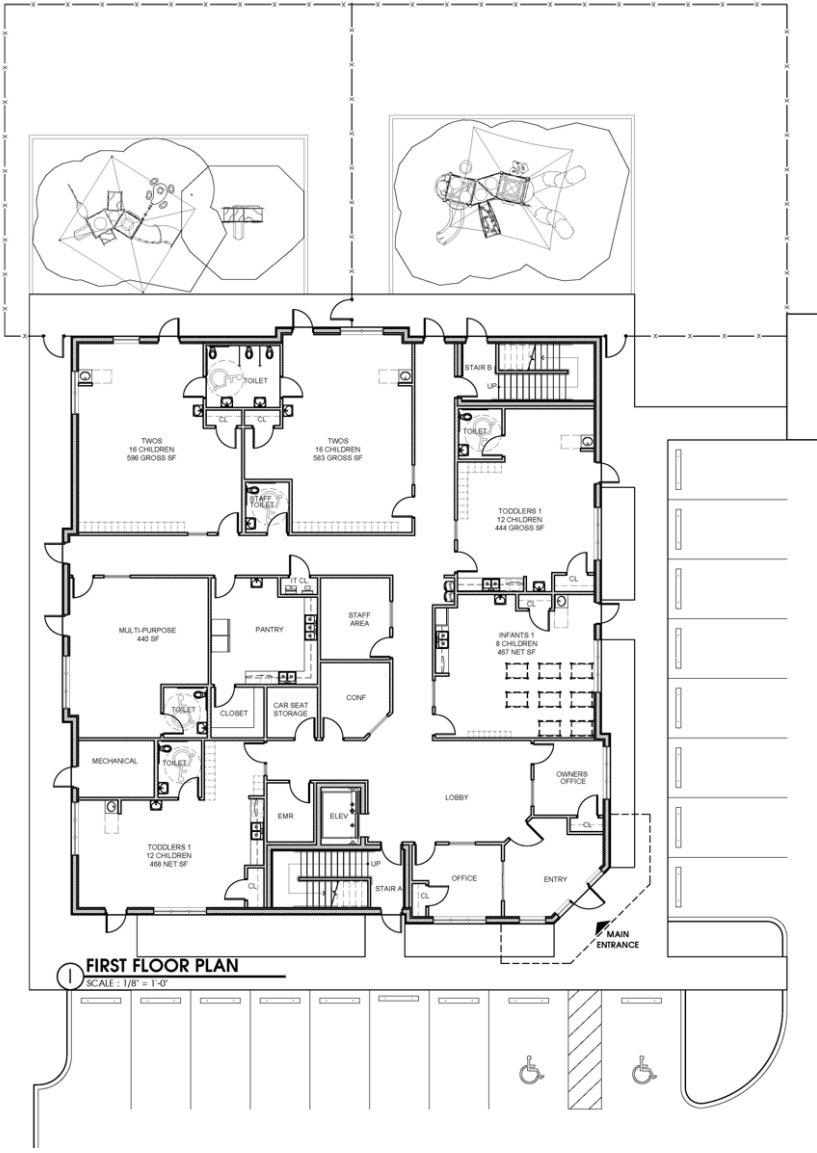
4 WEST ELEVATION
SCALE : 1/8" = 1'-0"

ROOF PLAN

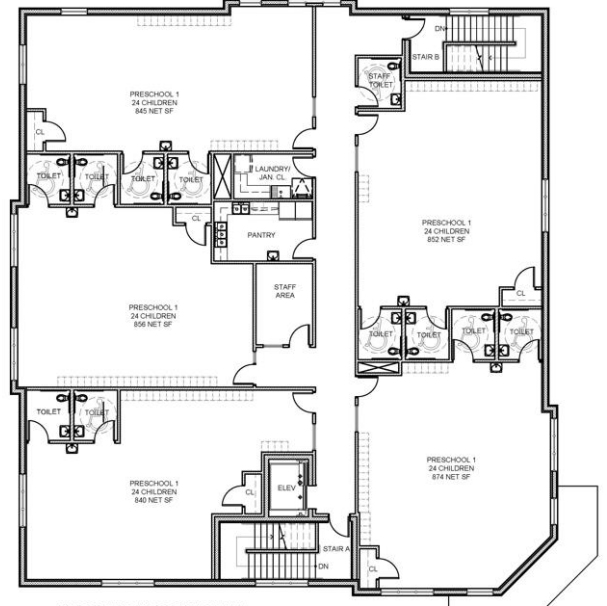


5 ROOF PLAN
SCALE: 1/8"=1'-0"

FIRST & SECOND FLOOR PLAN



1 FIRST FLOOR PLAN
SCALE = 1/8" = 1'-0"



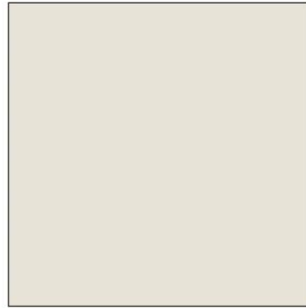
2 SECOND FLOOR PLAN
SCALE = 1/8" = 1'-0"

BUILDING PLAN DATA TABLE	
NUMBER OF STUDENTS - 36 MONTHS OLD	66
NUMBER OF STUDENTS - 24 MONTHS OLD	120
TOTAL STUDENTS	186
TOTAL STAFF	22
TOTAL OCCUPANCY	208

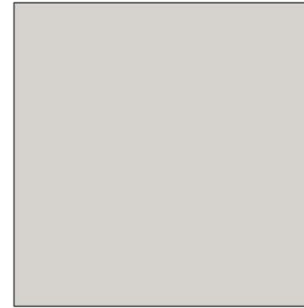
MATERIAL SAMPLE BOARD



WINDOW/DOOR FRAMES
DARK BRONZE



STUCCO-1
COLOR: SW 7009 - PEARLY WHITE



STUCCO-2
COLOR: SW 7647 - CRUSHED ICE

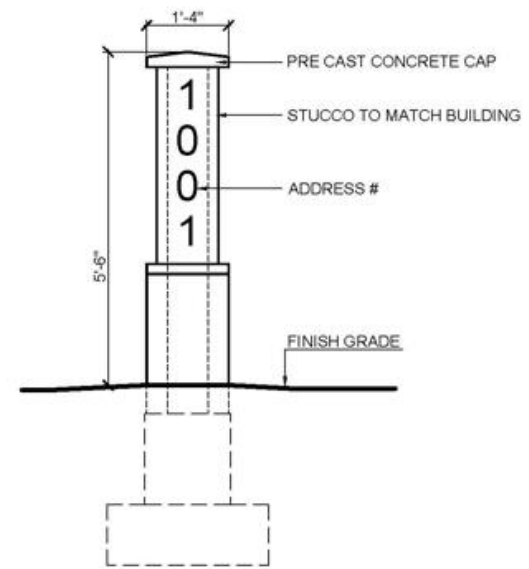
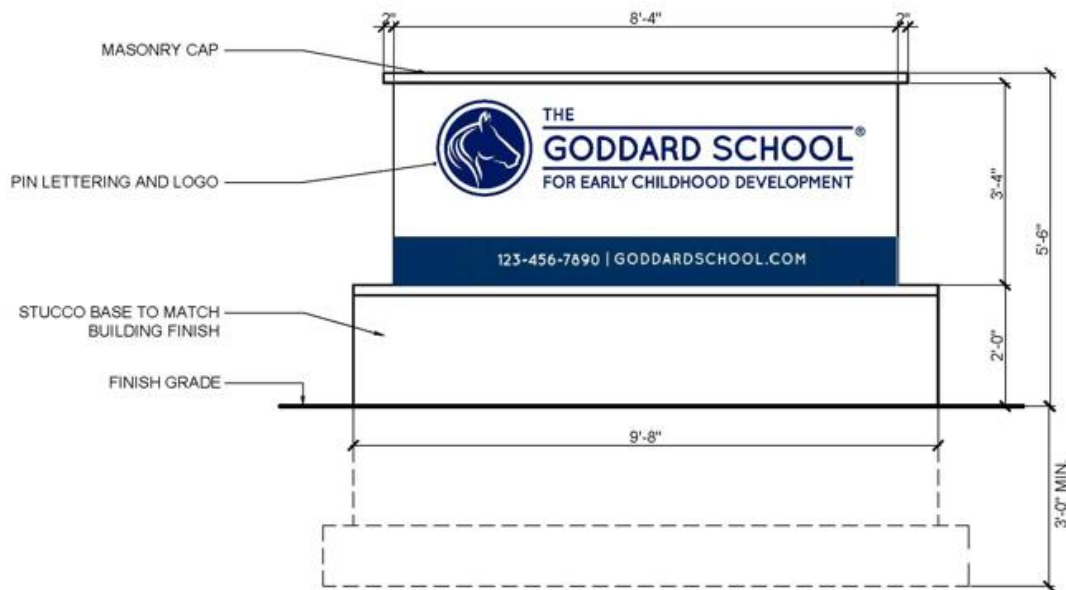


ROOF
SPANISH TILE - TERRA COTTA

EXTERIOR MATERIAL SCHEDULE

LABEL	MANUFACTURER	SIZE / TYPE	FINISH / COLOR
STOREFRONT	KAWNEER	TRIFAB 451T / 350 PER DOOR SCHEDULE	DARK BRONZE
DOOR	-	PER DOOR SCHEDULE	DARK BRONZE
FIXED WINDOW	TBD	TBD	DARK BRONZE
STUCCO-1	DRYVIT	-	SAND PEBBLE FINISH COLOR: SW 7009
STUCCO-2	DRYVIT	-	SAND PEBBLE FINISH COLOR: SW 7647
GUTTER-1	-	6" ALUMINUM TYPE 'K' W/ LEAF SCREEN AND 6" LEADERS	TBD
VINYL-1	ROYAL BUILDING PRODUCTS	COLORSCAPES TRIPLE 4 PERFORATED SOFFIT NOM. THICKNESS 0.042"	WHITE (REF. NOTE 2 BELOW)
KNOX-1	KNOX BOX	3200 SERIES W/ RECESSED MOUNT FLANGE, HINGE DOOR, & TAMPER SWITCH	DARK BRONZE (REF. NOTE 2 BELOW)
ROOF	BRAVA	SPANISH TILE	TERRA COTTA
TRIM	TBD	-	TBD

MONUMENT SIGN ELEVATIONS

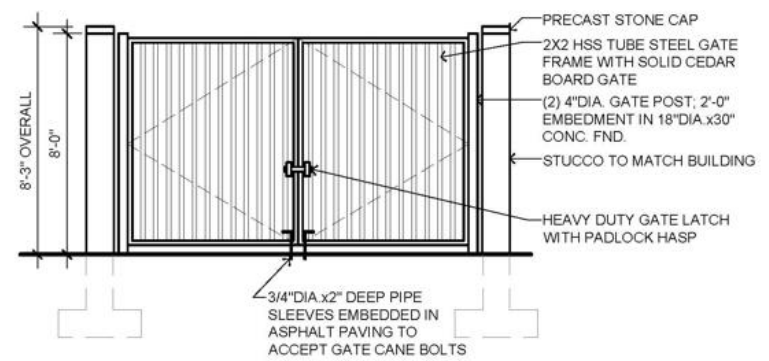
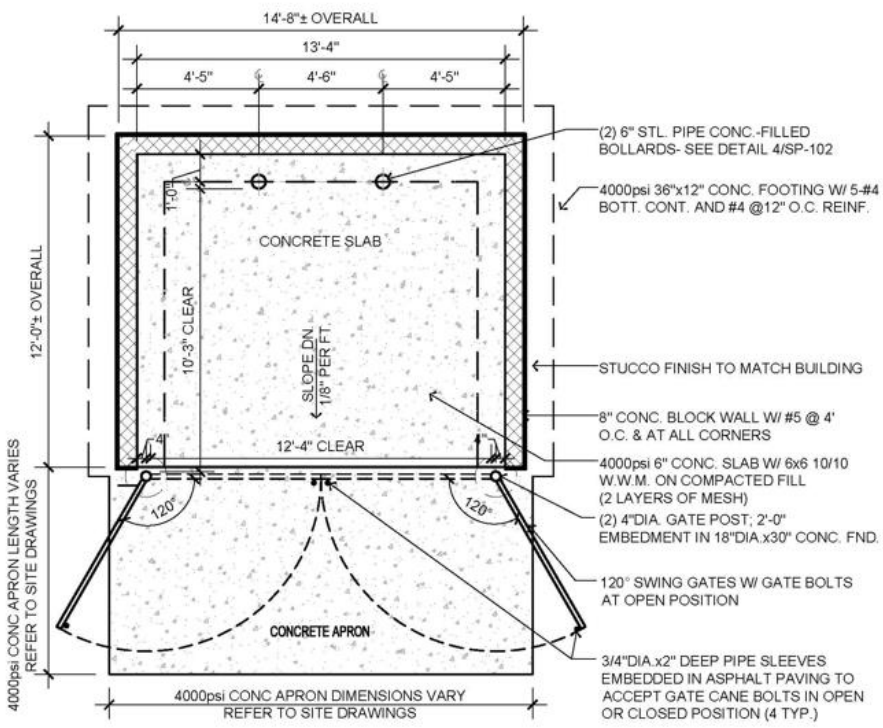


NOTE: REFER TO CIVIL ENGINEER'S PLANS FOR LOCATION OF MONUMENT SIGN ON SITE.

3 MONUMENT SIGN ELEVATIONS

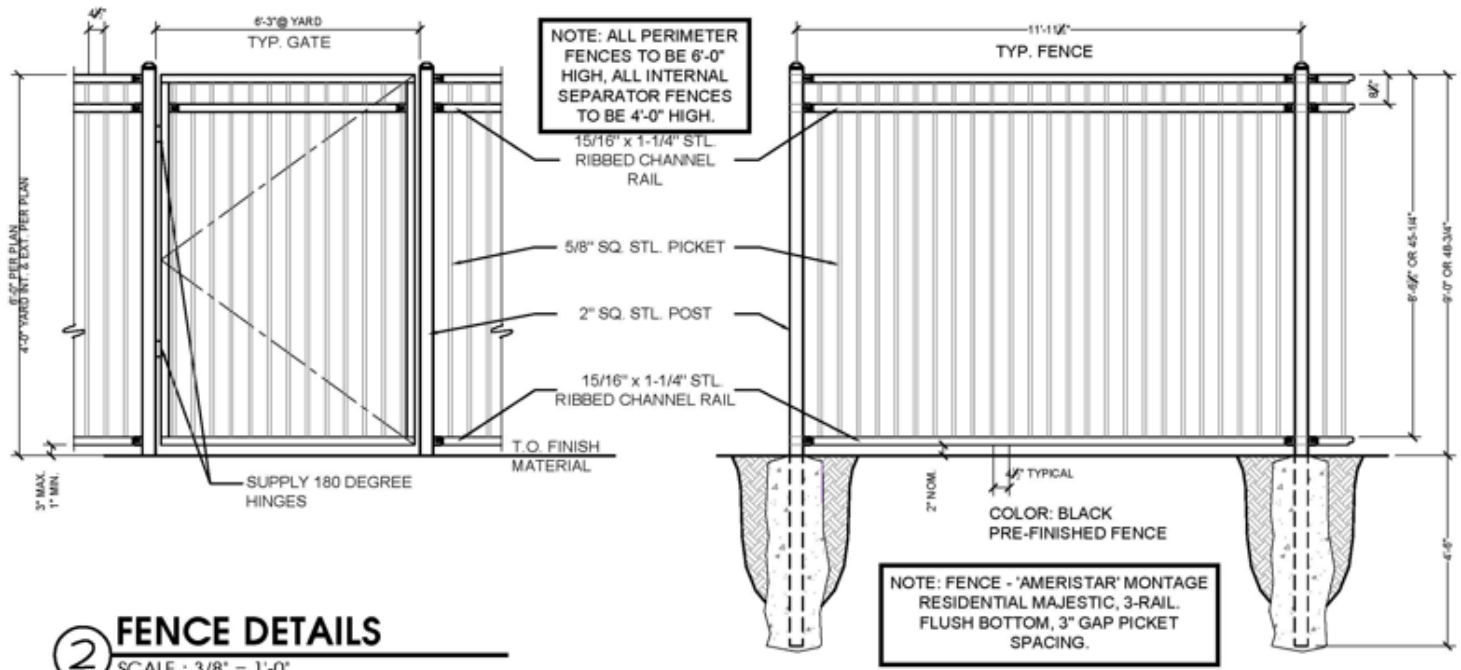
SCALE : 1/2" = 1'-0"

DUMPSTER ENCLOSURE DETAILS



1 DUMPSTER ENCLOSURE DETAILS
 SCALE : 1/4" = 1'-0"

FENCE DETAILS



2 FENCE DETAILS
SCALE : 3/8" = 1'-0"



QUESTIONS?