

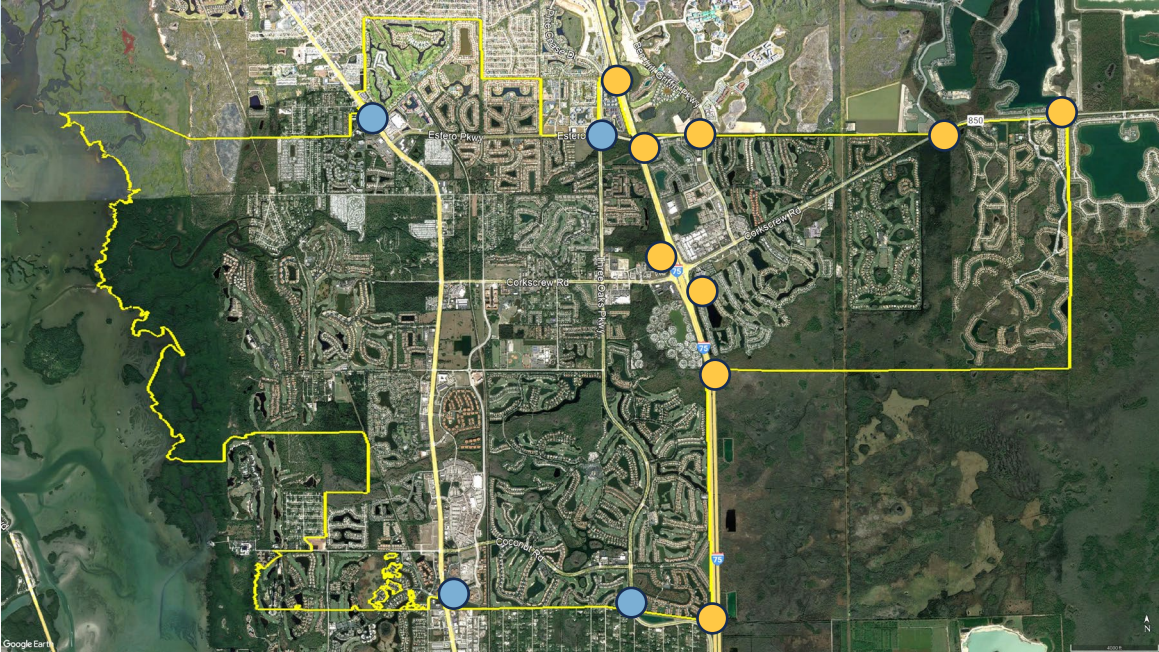


Village of Estero Monument Signs Update

David Willems, P.E.



Monument Sign Locations



- Approved
- Additional



Imperial Parkway (South)

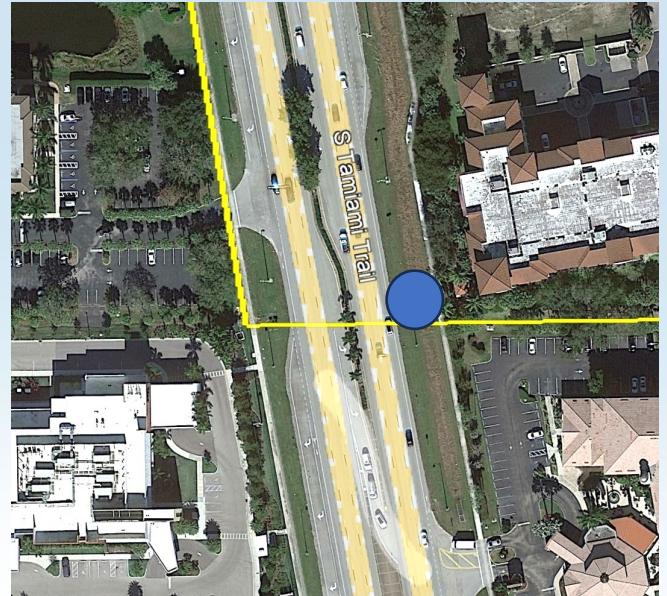
Sign is complete





US 41 South

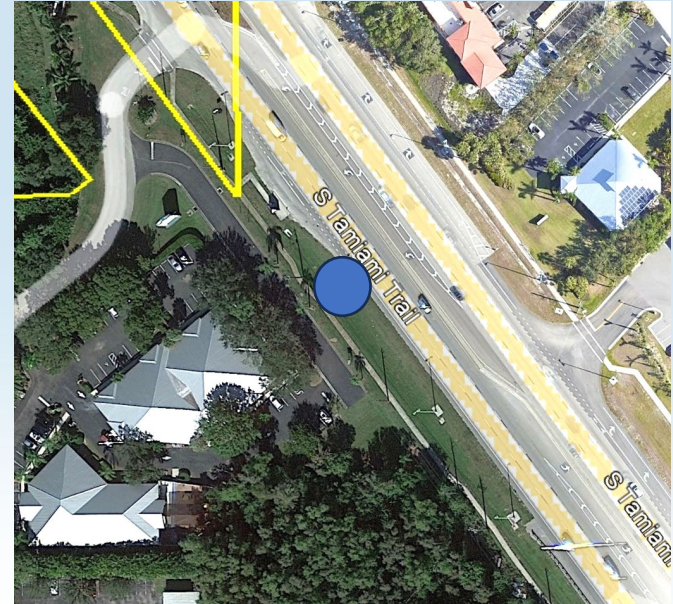
- Permits approved
- Pipe & Fill installed
- Sign to be installed Feb 23rd
- Landscaping installed Mar 1st





US 41 North

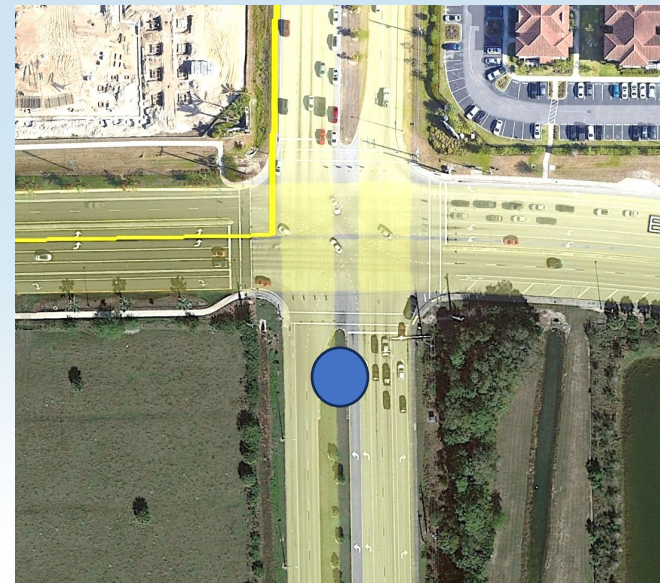
- Permit Approved
- Pipe & Fill installed Feb 7th
- Sign installed by Feb 29th
- Landscaping installed Mar 7th





Three Oaks Pkwy North

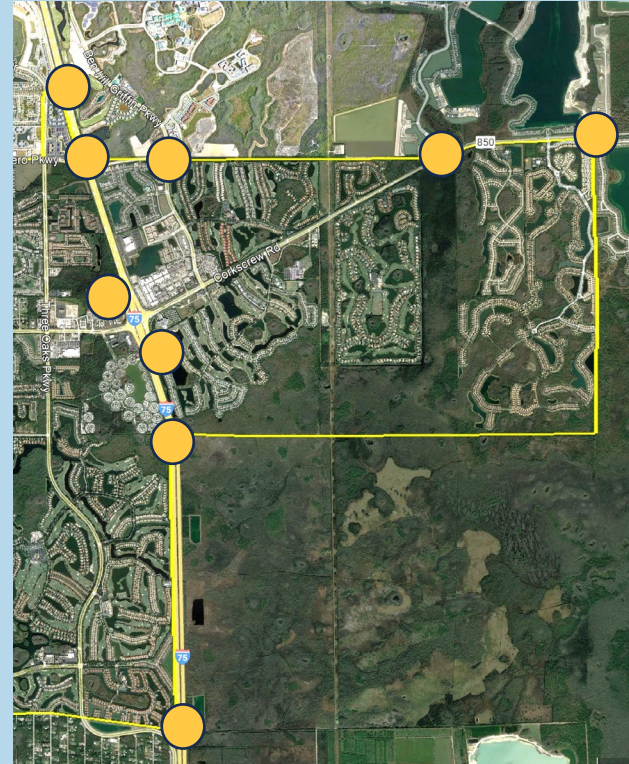
- Permits Approved
- No fill or pipe needed
- Sign installed Feb 23rd
- Landscaping installed Mar 1st





Additional Sign Locations

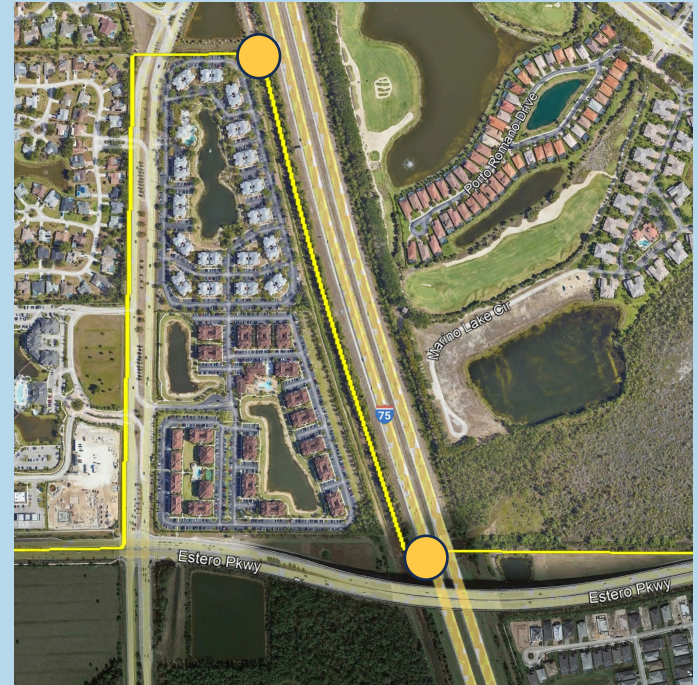
1. I-75 North
2. I-75 Interchange
3. I-75 South
4. Ben Hill Griffin Parkway
5. Corkscrew Road





I-75 North

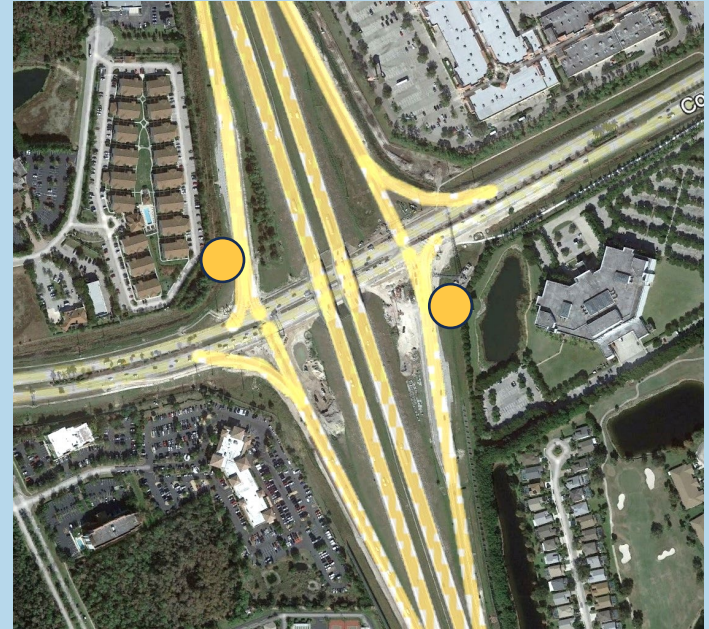
- Two potential locations along shoulder
- Large signs to be visible
- Could Incorporate Overpass
- Will require FDOT Approval





I-75 Interchange

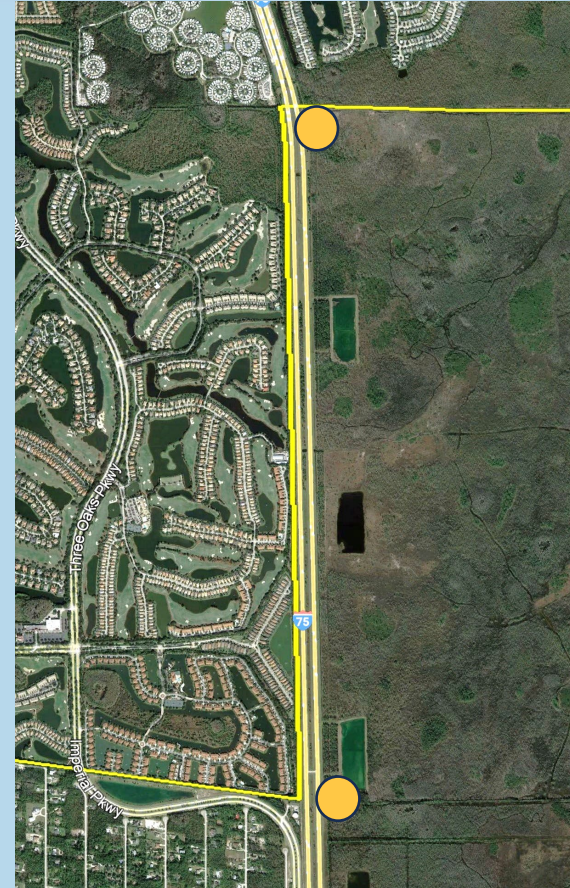
- Signs Located at off ramps
- May not be noticed
- Will require FDOT Approval





I-75 South

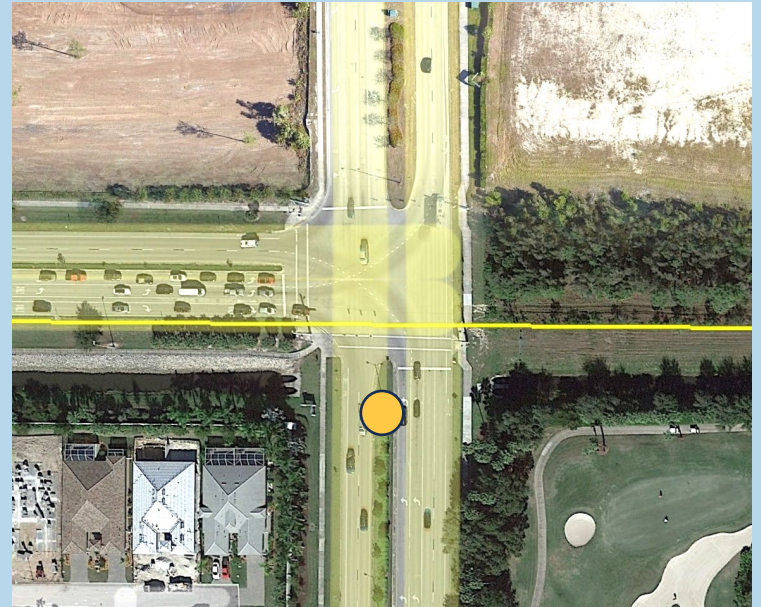
- Two potential locations along shoulders
- Large sign to be visible
- Will require FDOT Approval





Ben Hill Griffin Parkway

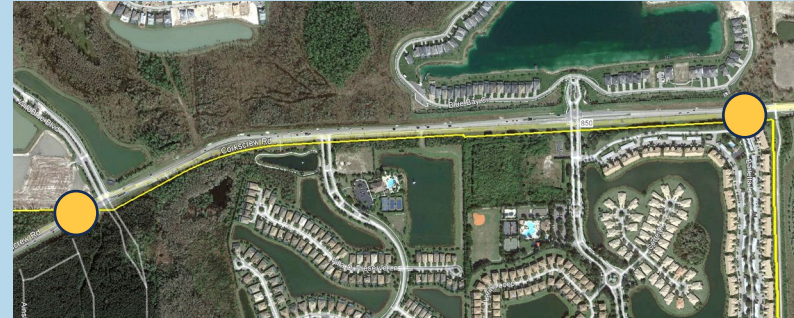
- Location in median like Three Oaks Pkwy and Imperial Parkway
- Landscape design contemplates potential future sign
- Will required Lee County approval





Corkscrew Road

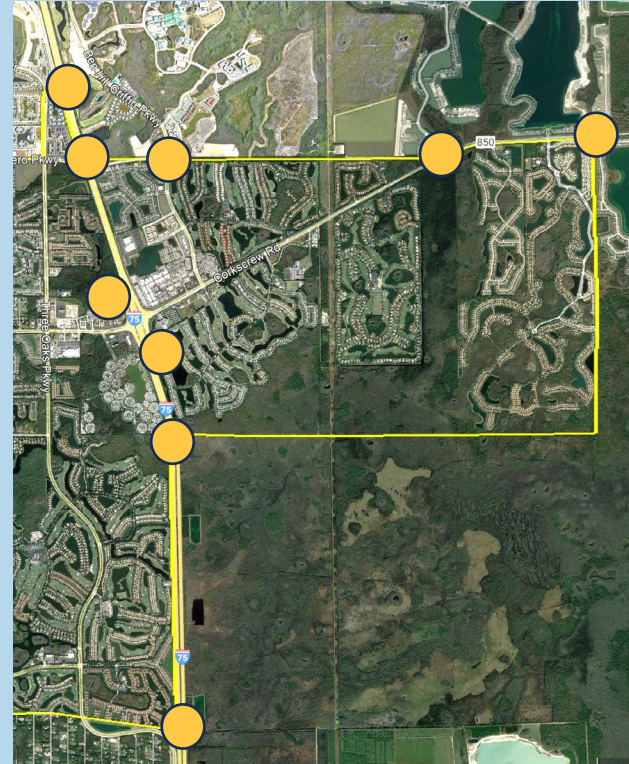
- Two potential locations - median
- Landscape design does not currently contemplate sign location
- Will required Lee County approval





Additional Sign Locations

1. I-75 North
2. I-75 Interchange
3. I-75 South
4. Ben Hill Griffin Parkway
5. Corkscrew Road





QUESTIONS?