



# Ben Hill Griffin Pkwy

Project Update

David Willems, P.E.



# Outline

Location Map

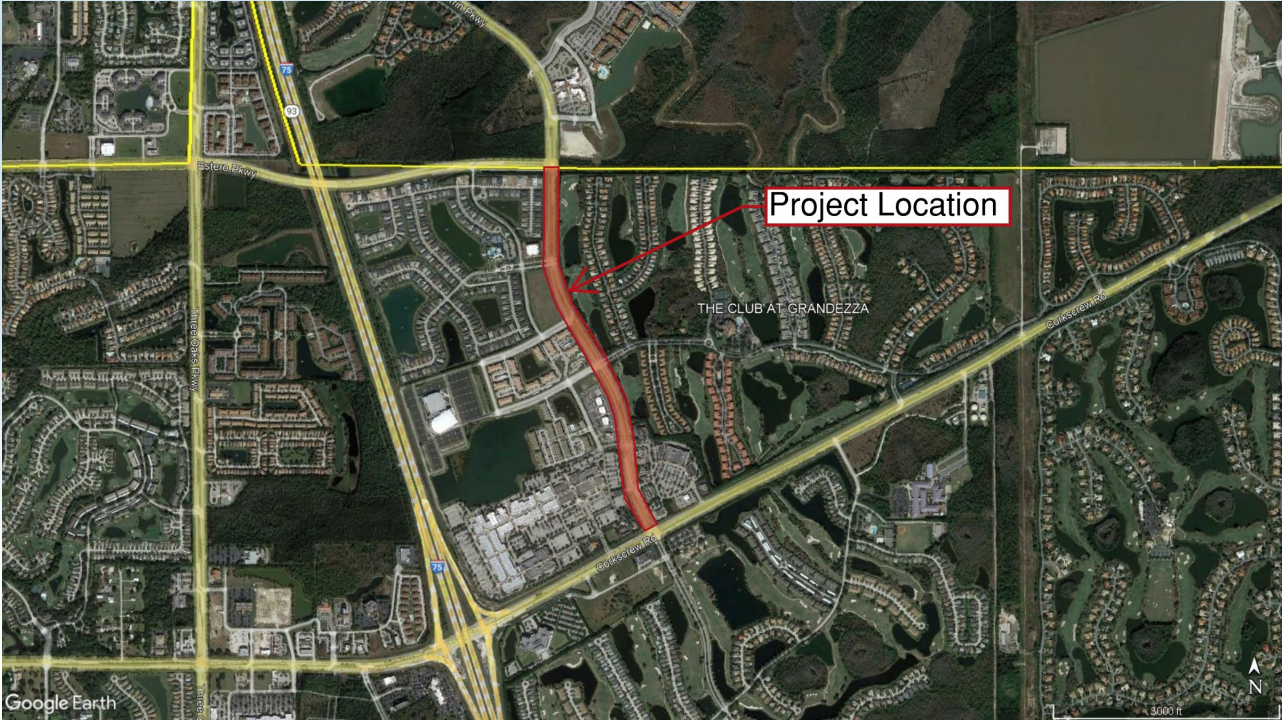
Sidewalk Easements

Irrigation Easements

Monument Sign Locations



# Location Map





# Sidewalk Easements

Along East side of road

Property Owner: HGC Grandezza LLC (The Club at Grandezza)

Verbally Approved March 28, 2024



# Irrigation Easements

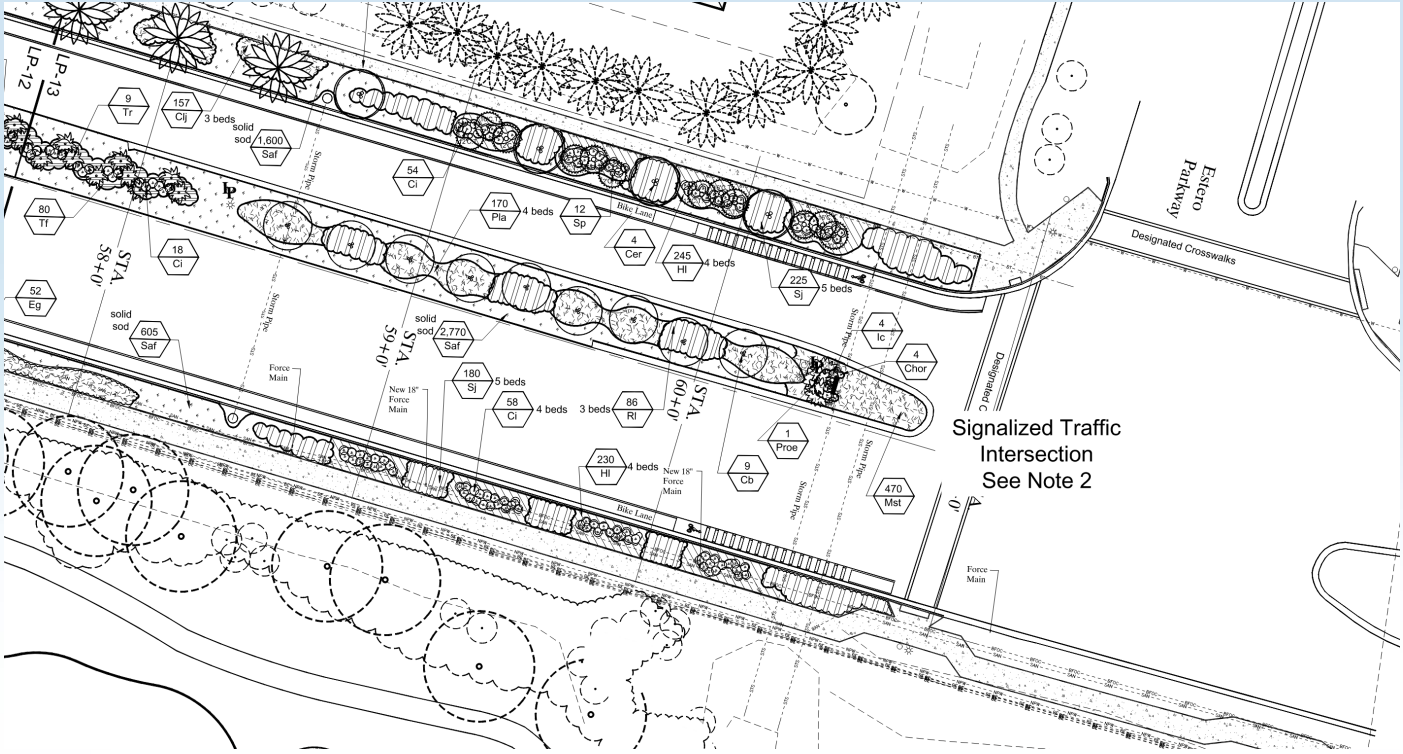
West Side of Road Near Corkscrew Rd

Property Owner: University Square CDD (Miromar  
Outlets)

May need alternate location



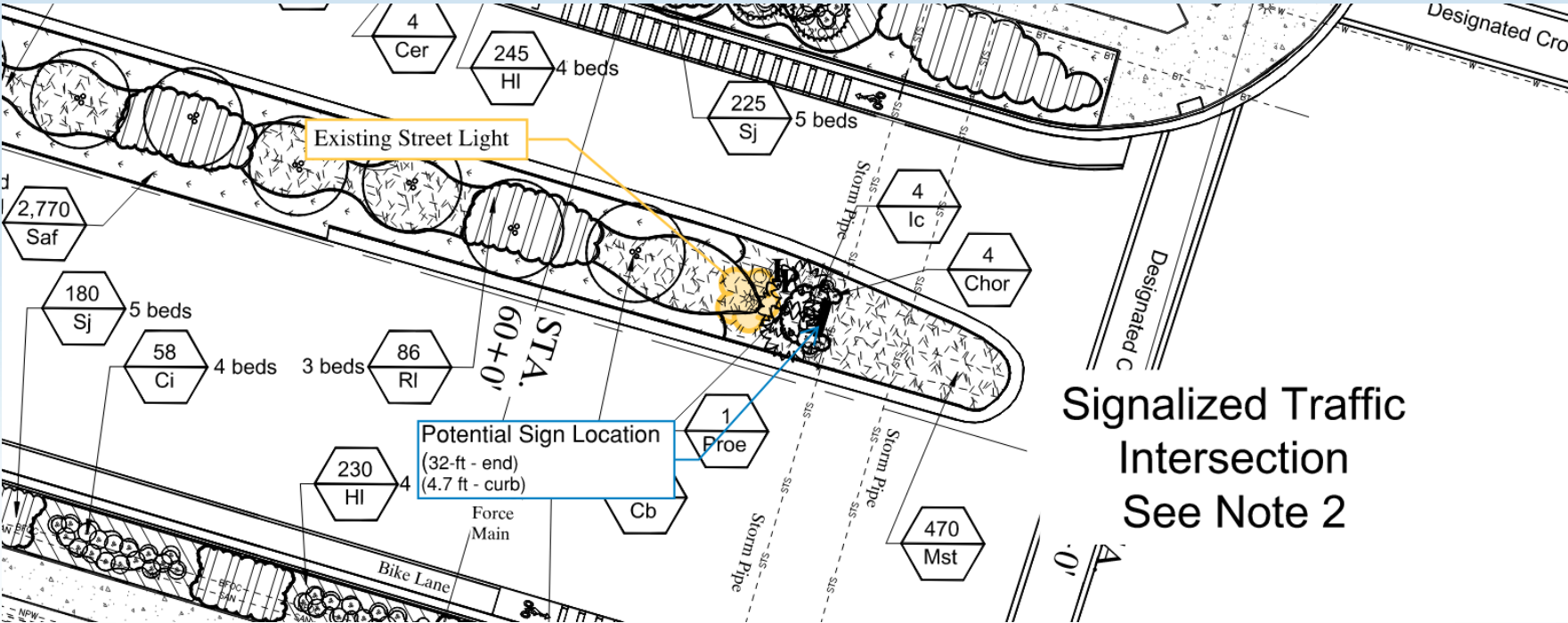
# Monument Sign Locations







# Center Median



Signalized Traffic  
Intersection  
See Note 2



# Center Median







# Center Median





# Center Median

## Three Oaks Parkway

Median Width – Approx. 28-ft

Distance from end: Approx 75-ft

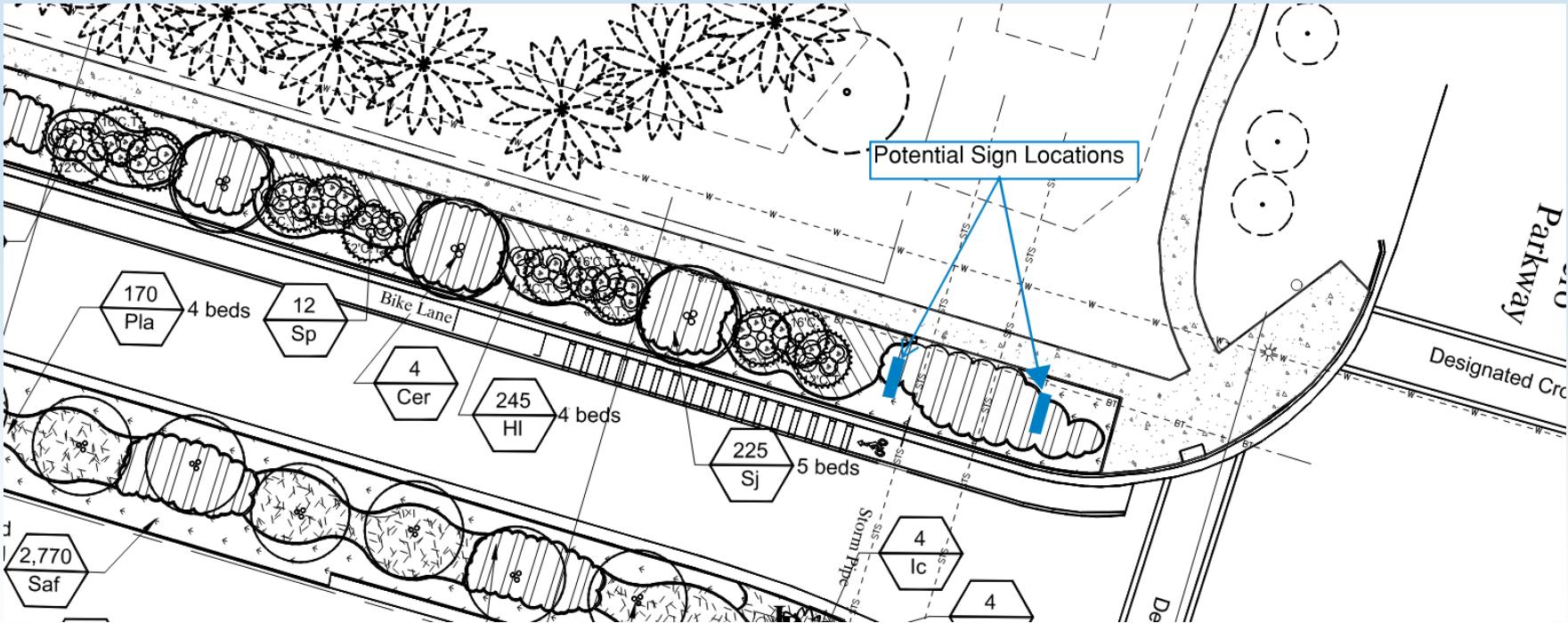
## Ben Hill Griffin Parkway

Median Width – Approx. 17-ft

Distance from end: Approx 32-ft



# West Shoulder





# West Shoulder







# QUESTIONS?