

NEWBRIDGE COURT & STONEYBROOK  
GOLF DRIVE  
NEIGHBORHOOD MEETING 10/8/2024

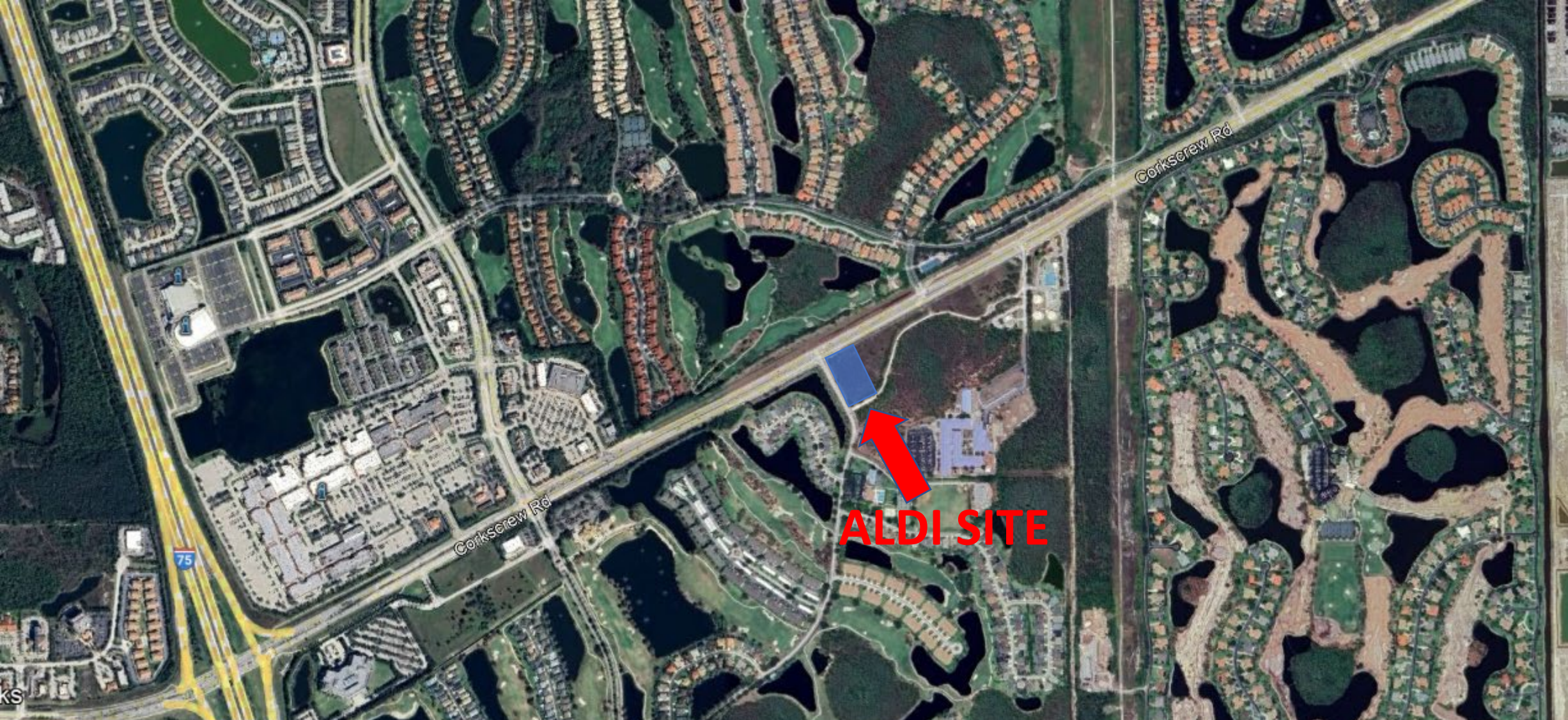
---

ALDI  
Grocery Store





LOCATED AT: 11906 NEWBRIDGE COURT: SOUTH OF  
CORKSCREW ROAD, EAST STONEYBROOK GOLF DRIVE





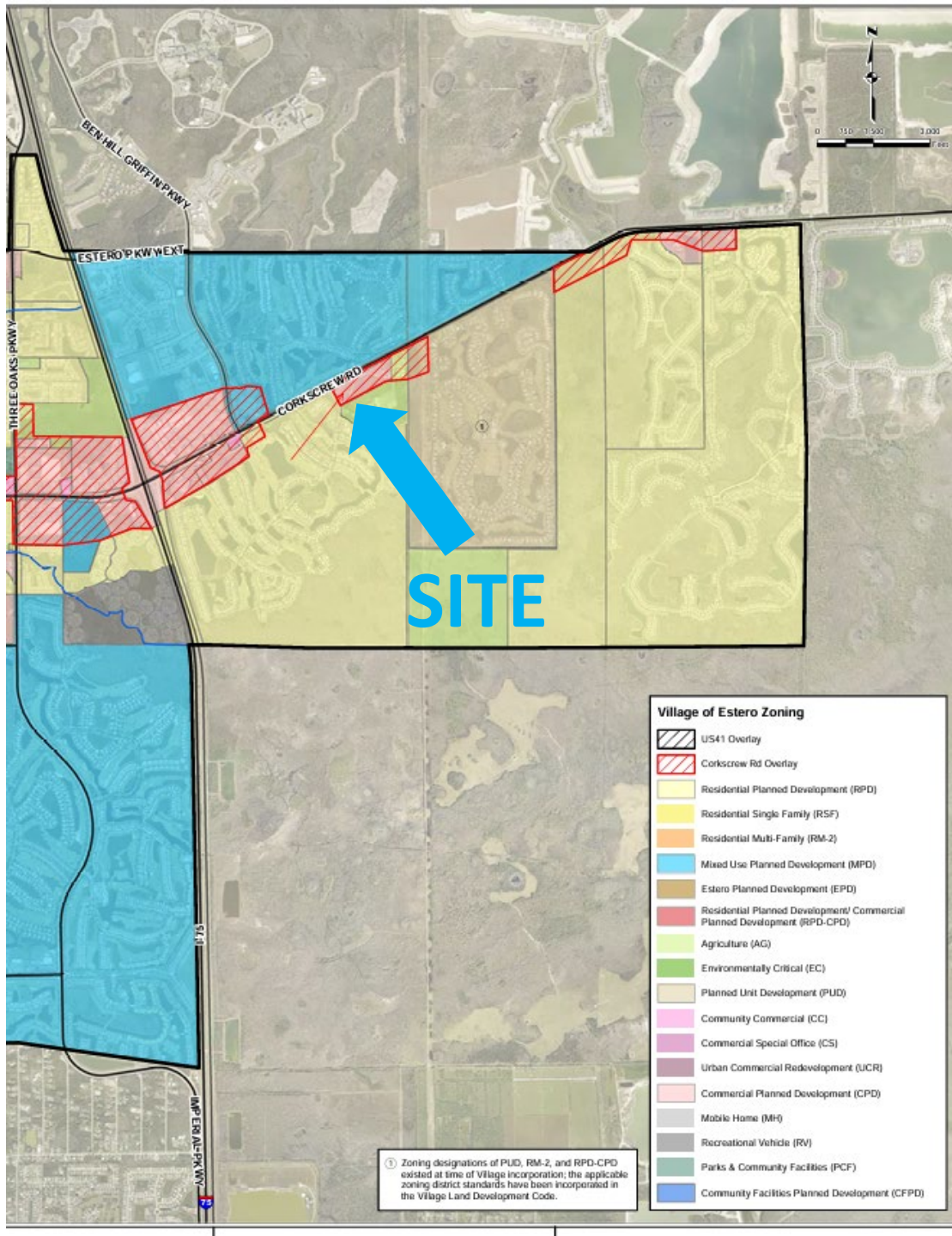
LOCATED AT: 11906 NEWBRIDGE COURT: SOUTH OF  
CORKSCREW ROAD, EAST STONEYBROOK GOLF DRIVE

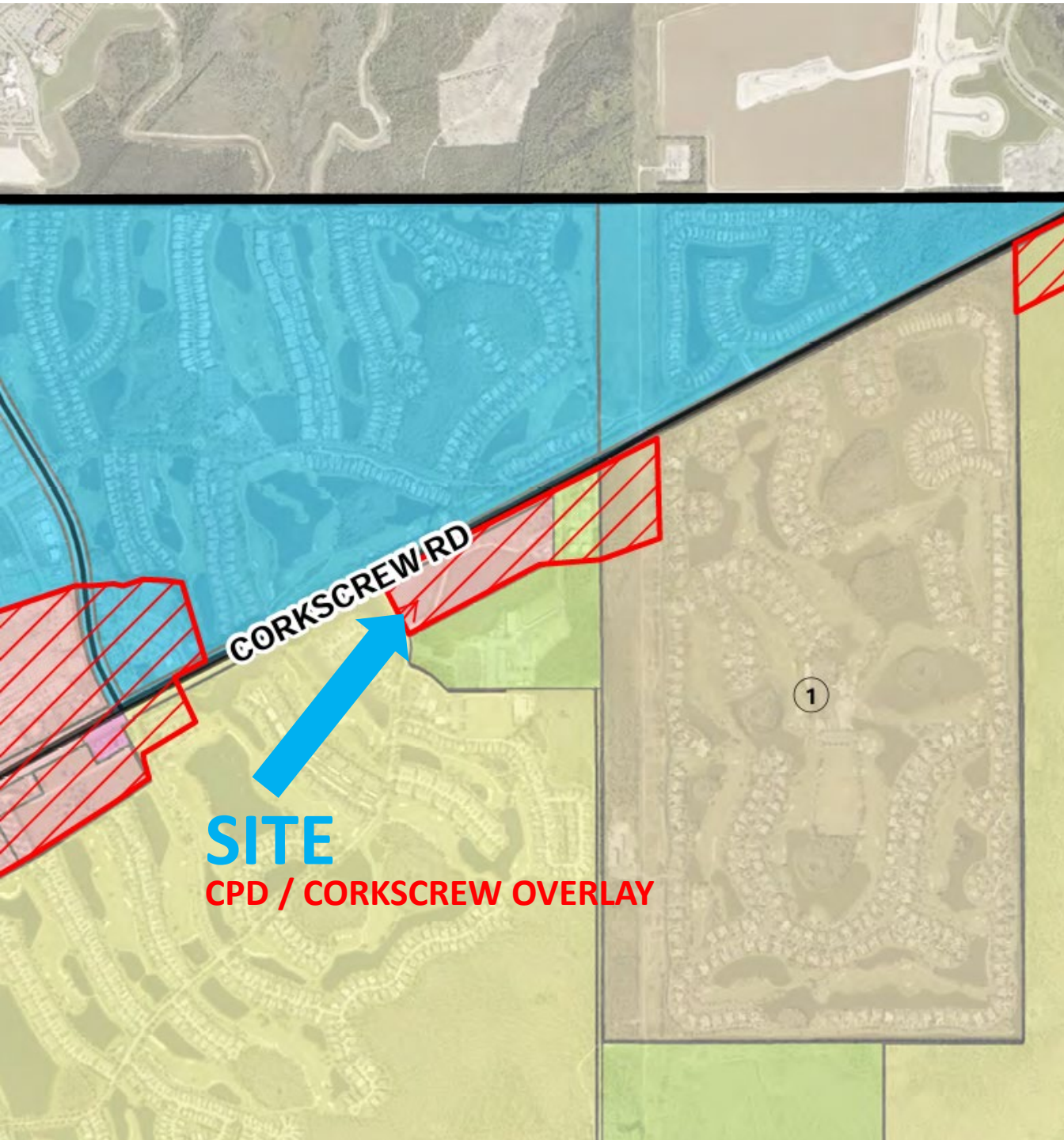




# ZONING MAP

- CORKSCREW ROAD OVERLAY
- COMMERCIAL PLANNED DEVELOPMENT



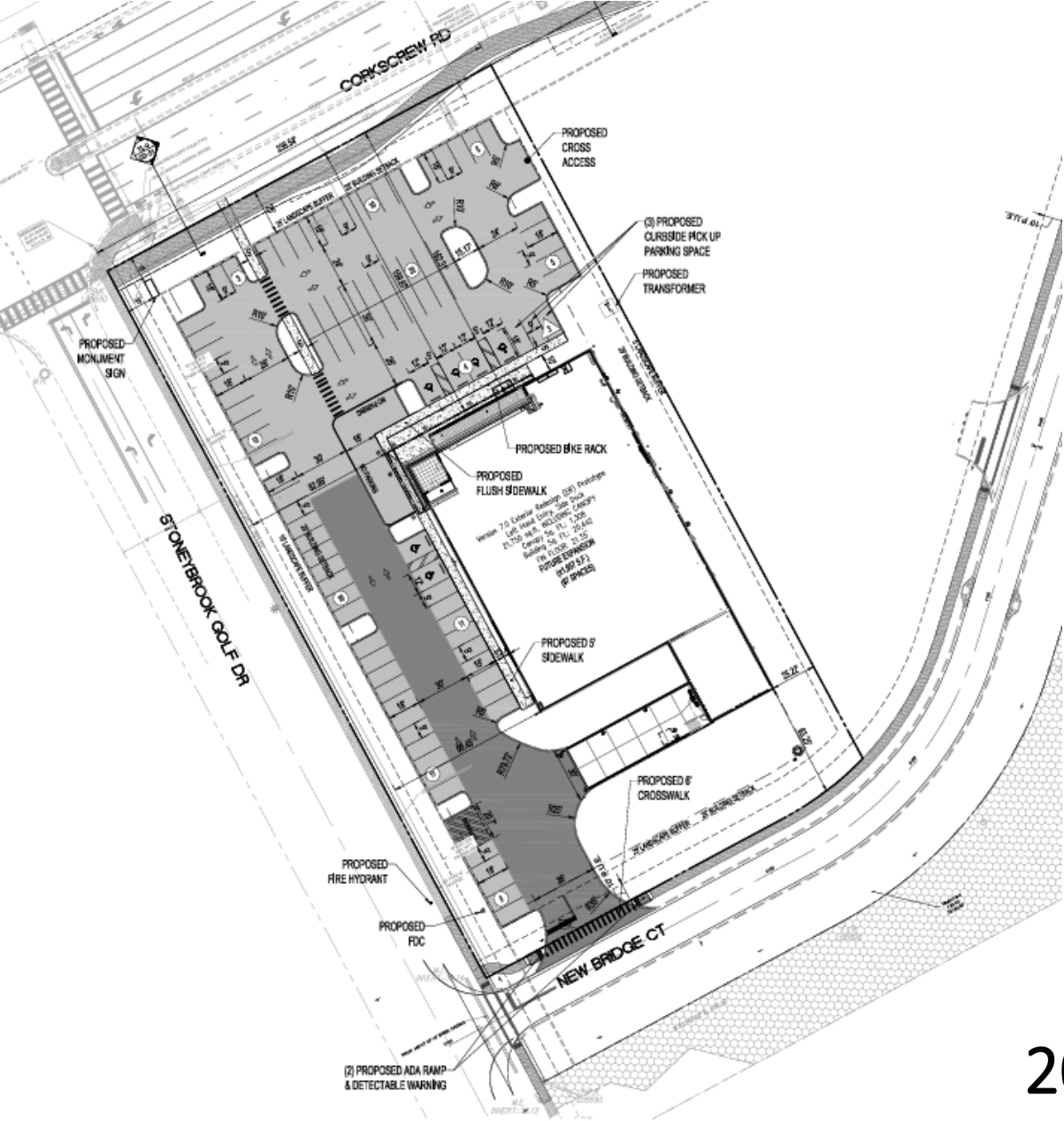


## ZONING MAP – ZOOMED IN

- ZONING DECISION Z-08-053
  - LEE COUNTY APPROVAL  
12/15/2008
  - ALLOWS FOOD STORES,  
UNDER 25,000 SQUARE FEET
  - 25 FOOT SETBACK FROM  
CORKSCREW ROAD



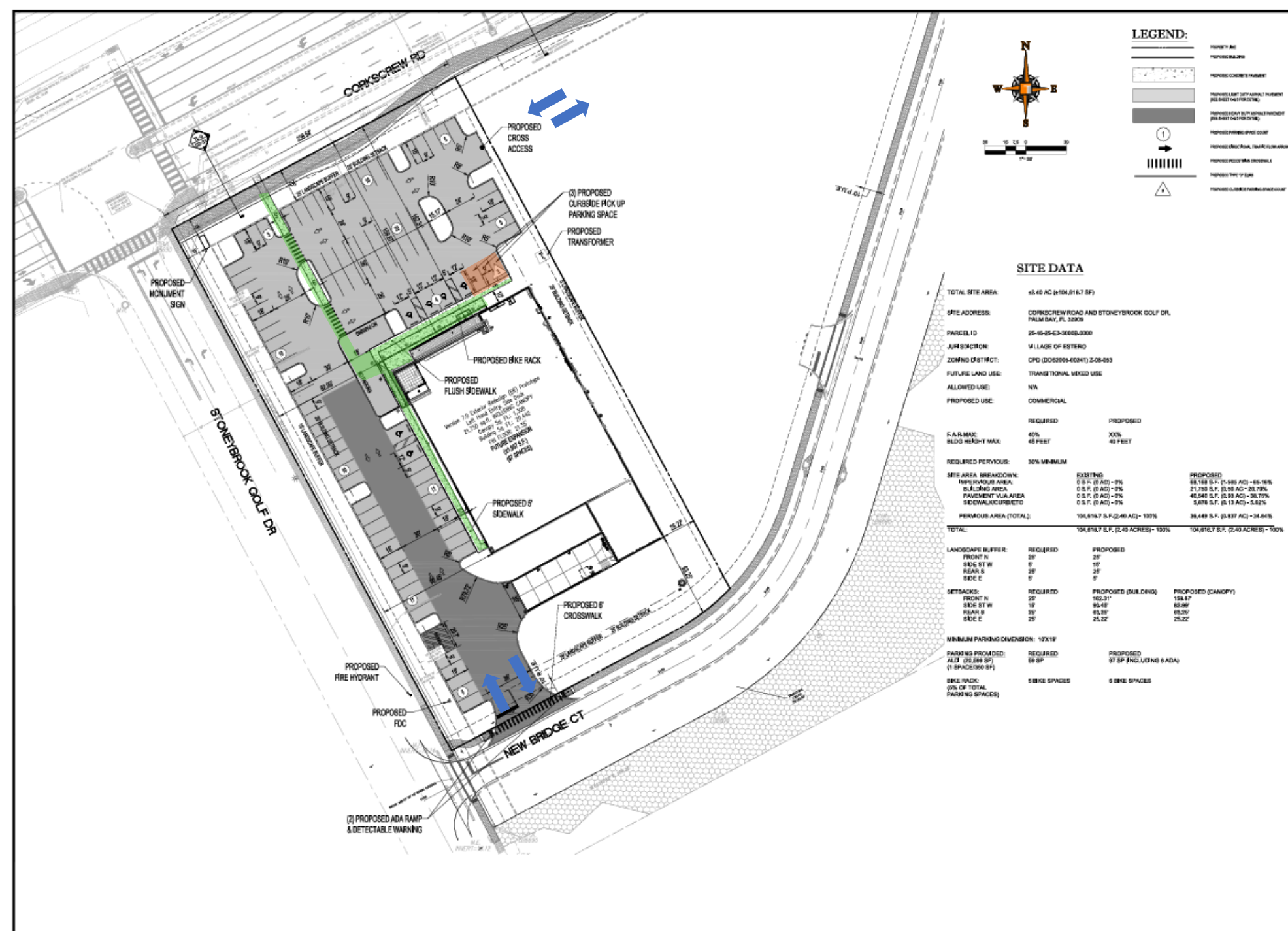




2024-10-08  
 Site Plan



# Site Plan



**THOMAS ENGINEERING GROUP**  
 CIVIL/MECHANICAL PROJECT MANAGER - LAND PLANNING - LANDSCAPE ARCHITECTURE  
 1882 W. FLETCHER AVE., SUITE 101 TAMPA, FL 33613  
 PHONE: 813.274.4100 FAX: 813.274.4101  
 WWW.THOMASENGINEERINGGROUP.COM

**811** KNOW WHAT'S BELOW ALWAYS CALL 811 BEFORE YOU DIG  
 www.call811fla.com

**PERMIT SET**

PROJECT No: P230811  
 DRAWN BY: HULL  
 CHECKED BY: GRIFFIN  
 DATE: 08/12/2024  
 SCALE: AS SHOWN  
 CDL NO: FT230811C-0.3-0P

**ALDI AT CORKSCREW ROAD**

FOR  
  
 CORKSCREW & STONEBROOK VILLAGE OF ESTERO LEE COUNTY, FL 33928

**THOMAS ENGINEERING GROUP**

1882 W. FLETCHER AVE., SUITE 101 TAMPA, FL 33613  
 Phone: 813.274.4100  
 www.ThomasEngineeringGroup.com

EDWARD M. McFARLAND, P.E.  
 No. 7115  
 LICENSED PROFESSIONAL ENGINEER  
 LICENSE NO. 12113  
 LICENSE EXPIRES 08/31/2028

SHEET TITLE: **SITE PLAN**

SHEET NUMBER: **C-5.0**  
 OF 11

- 21,750 square foot grocery store
- ADA accessible pedestrian walking path connected to existing sidewalk
- Covered bicycle parking
- Three (3) curbside pick-up parking spaces







# ABOUT THE ALDI PROJECT



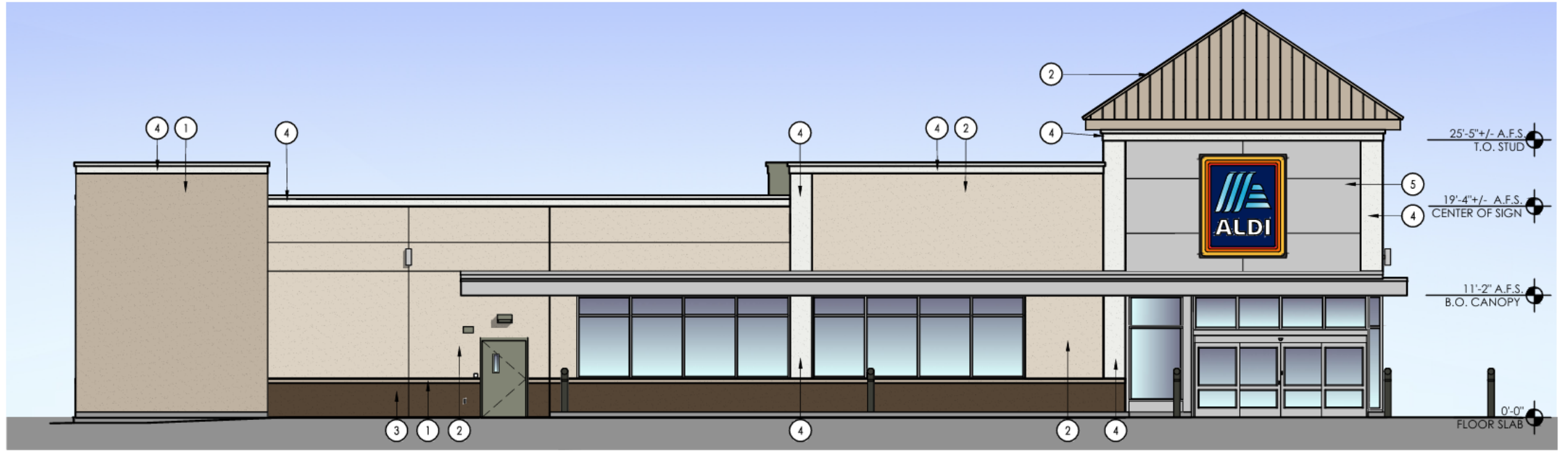
- PROVIDES NEEDED GROCERY STORE FOR CURRENT AND FUTURE POPULATION
- INCREASES ECONOMIC DEVELOPMENT AND EMPLOYMENT IN AREA
- STORE OPEN HOURS ARE 9AM TO 8PM.
- TYPICAL OPERATION HOURS ARE 7AM TO 9PM.



North Elevation

SCALE: 1/8" = 1'-0"

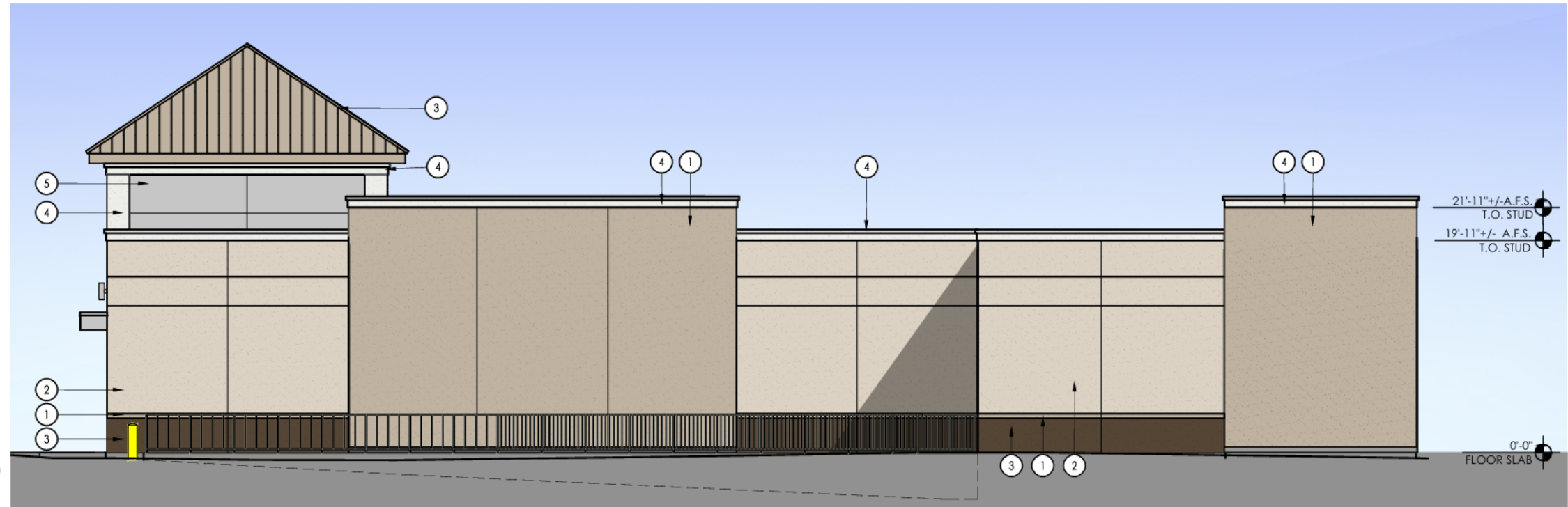
2



South Elevation

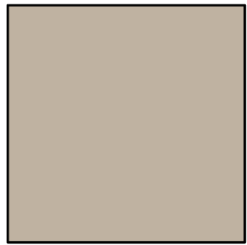
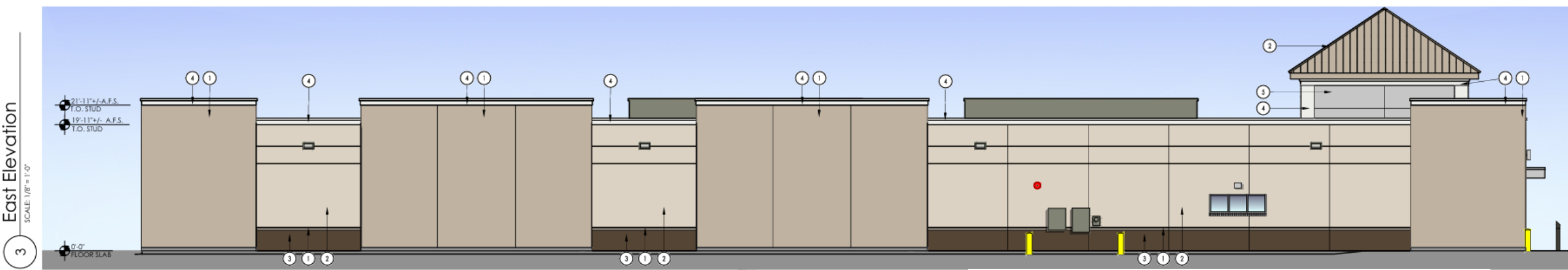
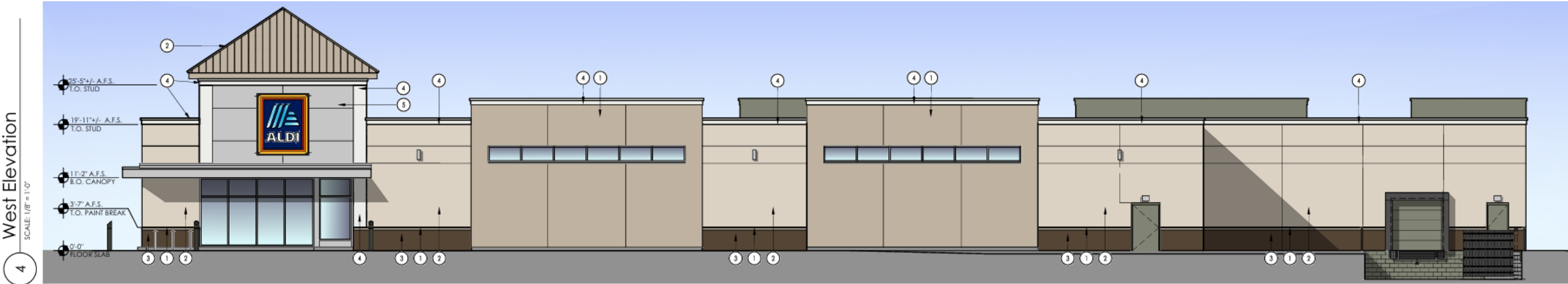
SCALE: 1/8" = 1'-0"

1



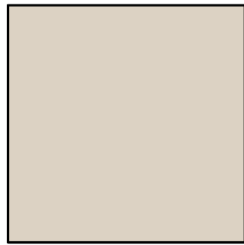


# ARCHITECTURAL ELEVATIONS



1

SHERWIN WILLIAMS - BALANCED BEIGE



2

SHERWIN WILLIAMS - NATURAL TAN



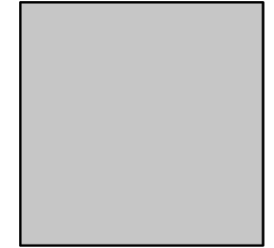
3

SHERWIN WILLIAMS - VAN DYKE BROWN



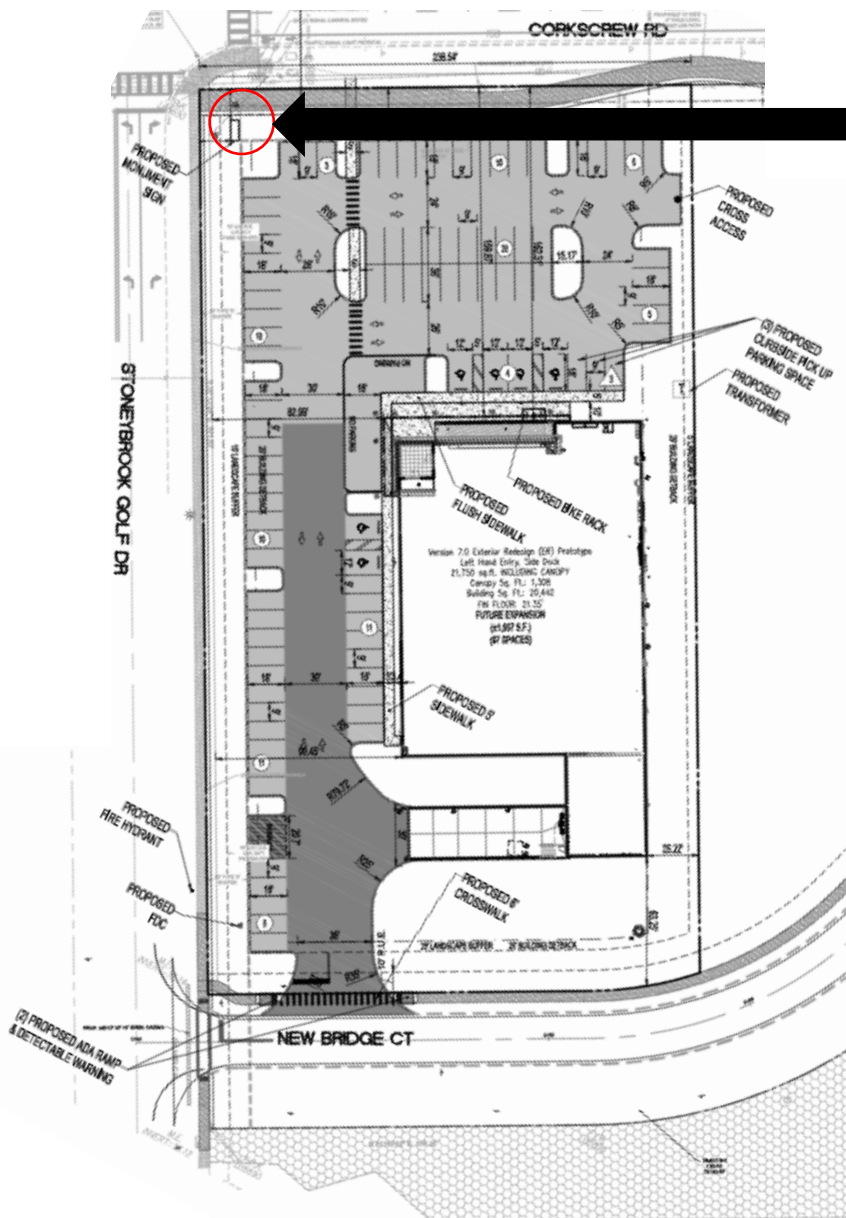
4

SHERWIN WILLIAMS - EXTRA WHITE



5

LAMINATORS INC - BRIGHT SILVER ALUMINUM COMPOSITE PANEL



## SITE SIGN – OFFSET 15 FEET FROM NORTH AND WEST PROPERTY LINES

Please note that the colors shown here are a graphical representation to show contrast in materials only. Due to the nature of electronic media, colors may vary depending on computer or printer used.

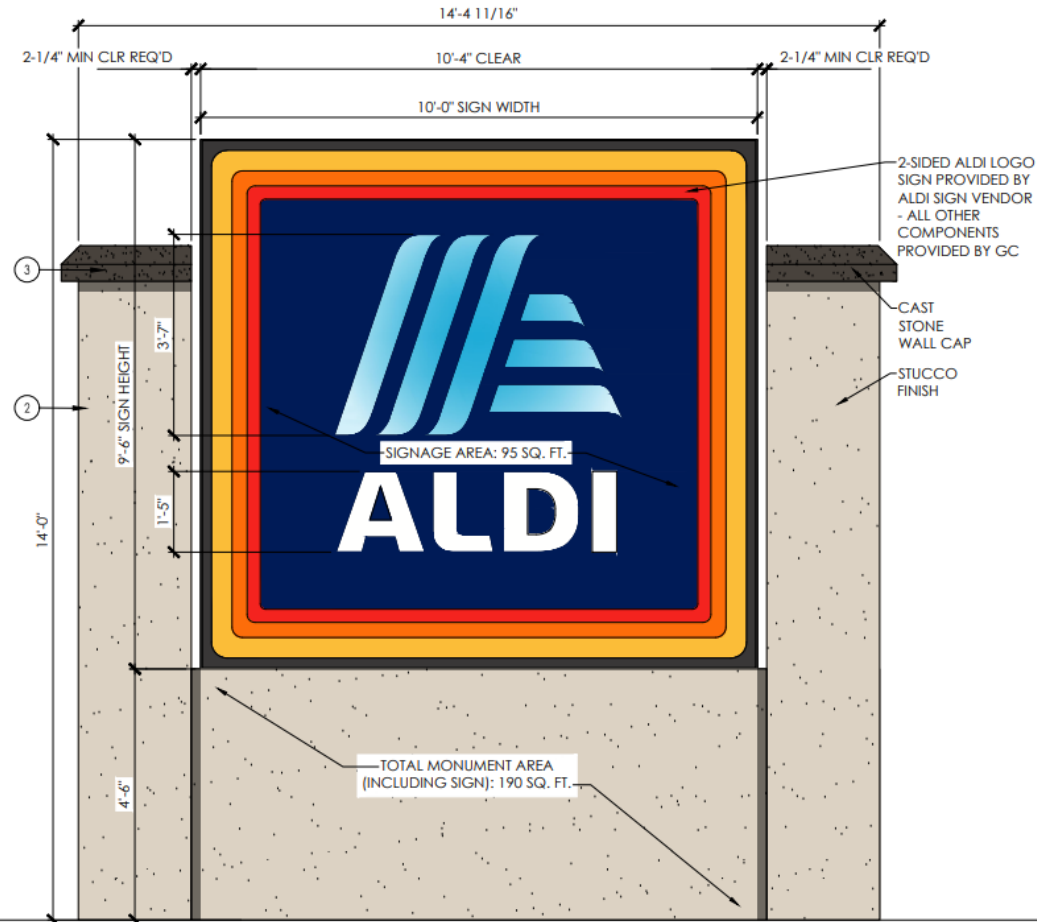
For review of actual colors, a material sample board should be created on a project specific basis.



① SHERWIN WILLIAMS - NATURAL TAN



② SHERWIN WILLIAMS - SEAL SKIN



B1 Monument Sign - Elevation

SCALE: 1" = 1'-0"