

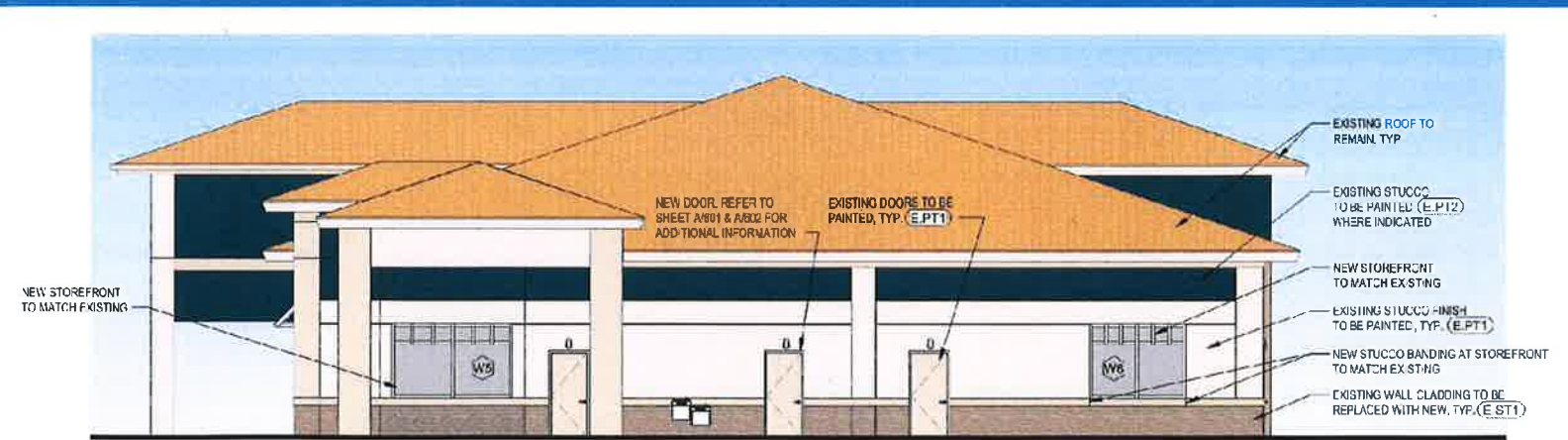
# Preferred Proposed Exterior

## EXTERIOR FINISH LEGEND:

(E.PT1)		(E.P14)	
(E.PT2)		(E.ST1)	
(F.PT3)		<b>SEE COLORS BELOW</b>	

## COLOR SELECTION:

E.PT1 - SW 7008 ALABASTER	SW 9109 NATURAL LINEN (BASE)
E.PT2 - SW 6250 RAINSTORM	SW 9140 BLUSTERY SKY
E.PT3 - SW 6711 PARAKEET	SW 7008 ALABASTER (TRIM)
E.PT4 - SW 0100 NATURAL LINEN	
E.ST1 - ELDCRACO STONE - DRY CREEK	



3 SOUTH ELEVATION  
1/8" = 1'-0"

4 NORTH ELEVATION  
1/8" = 1'-0"

**COLORS APPROVED BY 9/10/24 PZDB**

**APPROVED**  
VILLAGE OF ESTERO

SEP 18 2024

APPLICATION NO: DCS2024-0006

APPROVED BY: *[Signature]*