

Walmart Store #5347 Proposed Expansion

19975 S Tamiami Trl, Estero, FL 33928

Planning Zoning & Design Board Meeting

Village of Estero

Date: February 11, 2025



Project Team

- Developer/ Applicant: Wal-Mart Stores East LP
- Engineer: Bowman
- Landscape Architect: Evergreen
- Architect: Cuhaci Peterson
- Photometric: Current
- Signage : Florida Sign



Property Location

19975 S Tamiami Trl, Estero, FL

Located at the norther Corner of Intersection
of South Tamiami Trail & Estero Parkway



Site location in Lee County

Project Site Plan

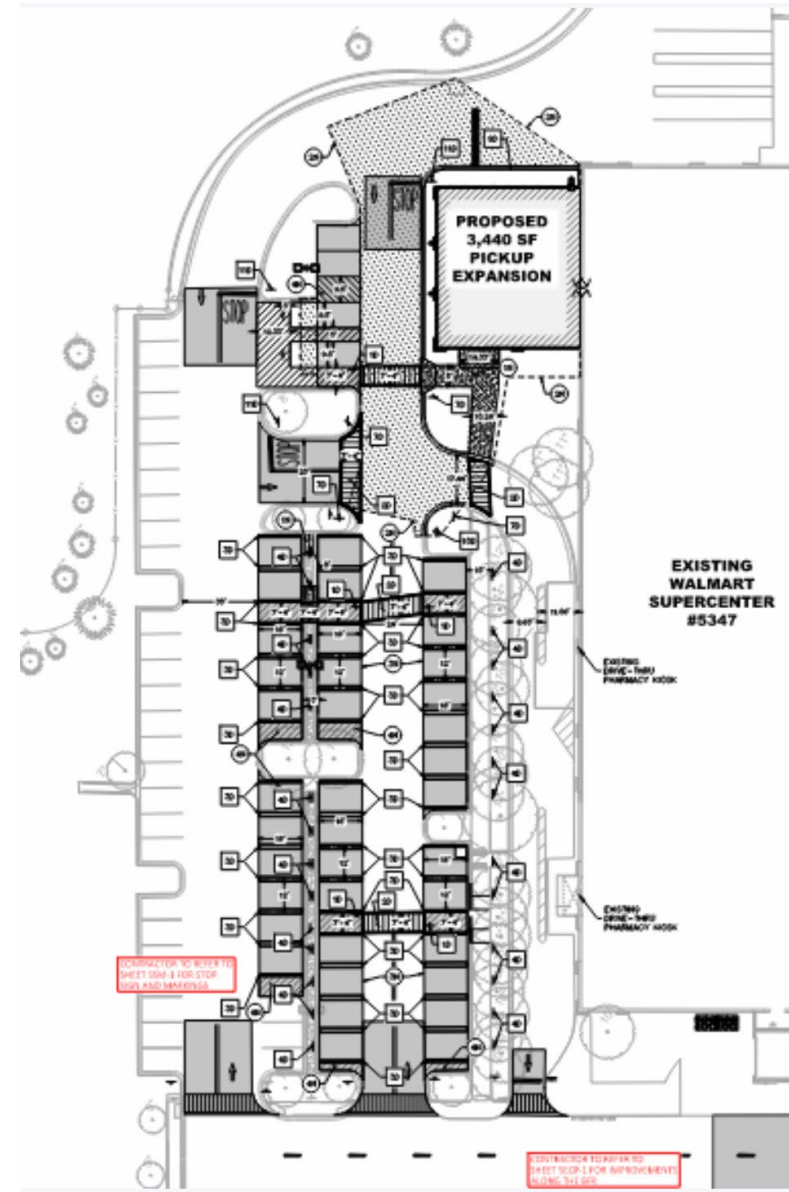
- ❑ Proposed ± 3,440 SF Pickup Expansion to North-East Corner of Existing Walmart (Estero Supercenter)
- ❑ Improvements consist of building expansion, associated pickup parking, traffic signage and associated pavement markings, and landscaping.



Site Plan Internal Circulation



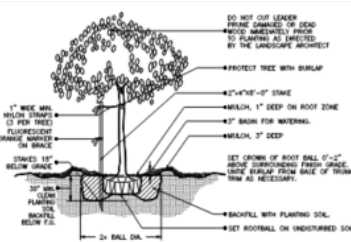
Existing Condition



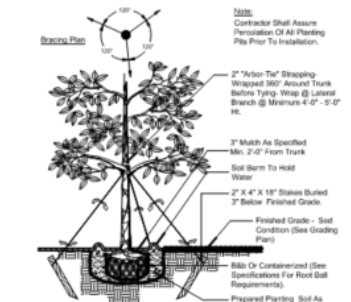
Proposed Condition

Site Landscaping

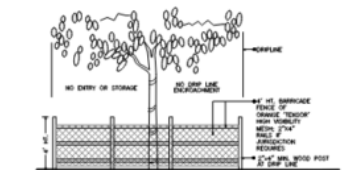
- Landscaping is provided in addition to the proposed expansion area of the site.
- The site has been heavily planted to maximize all available planting space.
- The caliper of shade trees were upsized to provide a more mature atmosphere to add the site's appearance.
- Tree choices consisted of Cypresses and Magnolias in order to ensure the trees can withstand the wet season. Palms and grasses are proposed for consistency with adjacent developments.



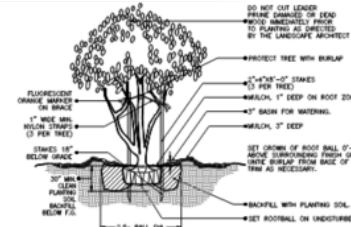
**(2" cal. and under)
SMALL TREE PLANTING DETAIL**



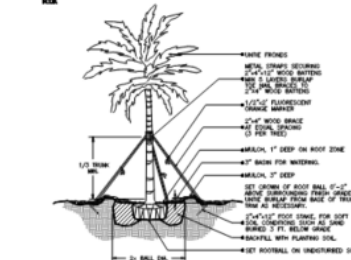
LARGE TREE PLANTING DETAIL



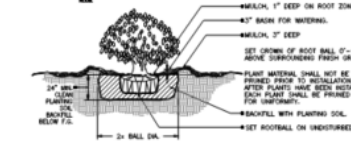
**TREE PRESERVATION
BARRICADE FENCING DETAIL**



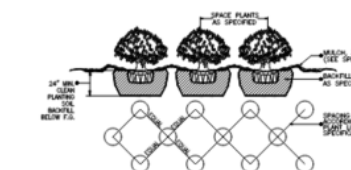
**MULTI-TRUNK AND SMALL TREE
(4" cal. and under) PLANTING DETAIL**



LARGE PALM PLANTING DETAIL



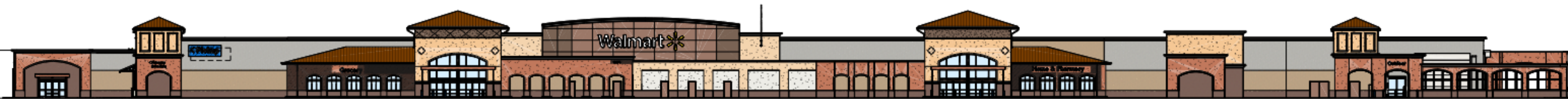
SHRUB PLANTING DETAIL



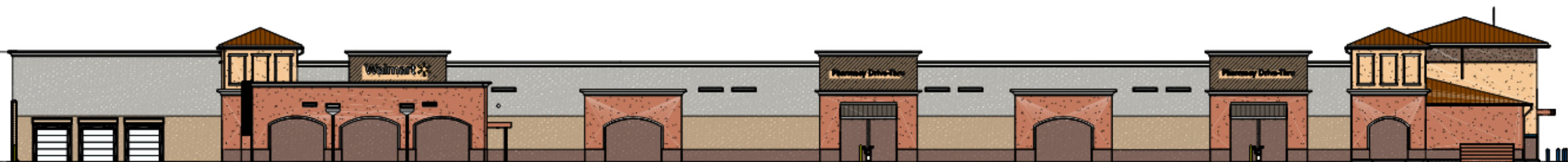
**SPACE PLANTS
PLANTING DETAIL**

Proposed Pattern Look – Front Elevation

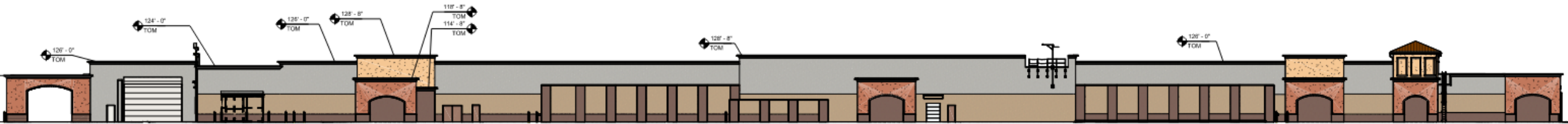
COLOR LEGEND	
P#	COLOR NAME
P5E	SAFETY YELLOW
P8E	PURE WHITE SW#7005
P36E	BLACK
P69E	BAKED CLAY SW6340
P80E	MOROCCAN BROWN SW6060
P83E	COBBLE BROWN SW6062
P200E	FLAN SW6652
P201E	DELICIOUS MELON SW6653
P76U	"WALMART BLUE"
P162E	DARK GRAY
P217E	DARK BRONZE
WP2	SOLID PHENOLIC PAN EL DARK BROWN
WP3	SOLID PHENOLIC PAN EL COBBLE BROWN



Left Elevation



Rear Elevation

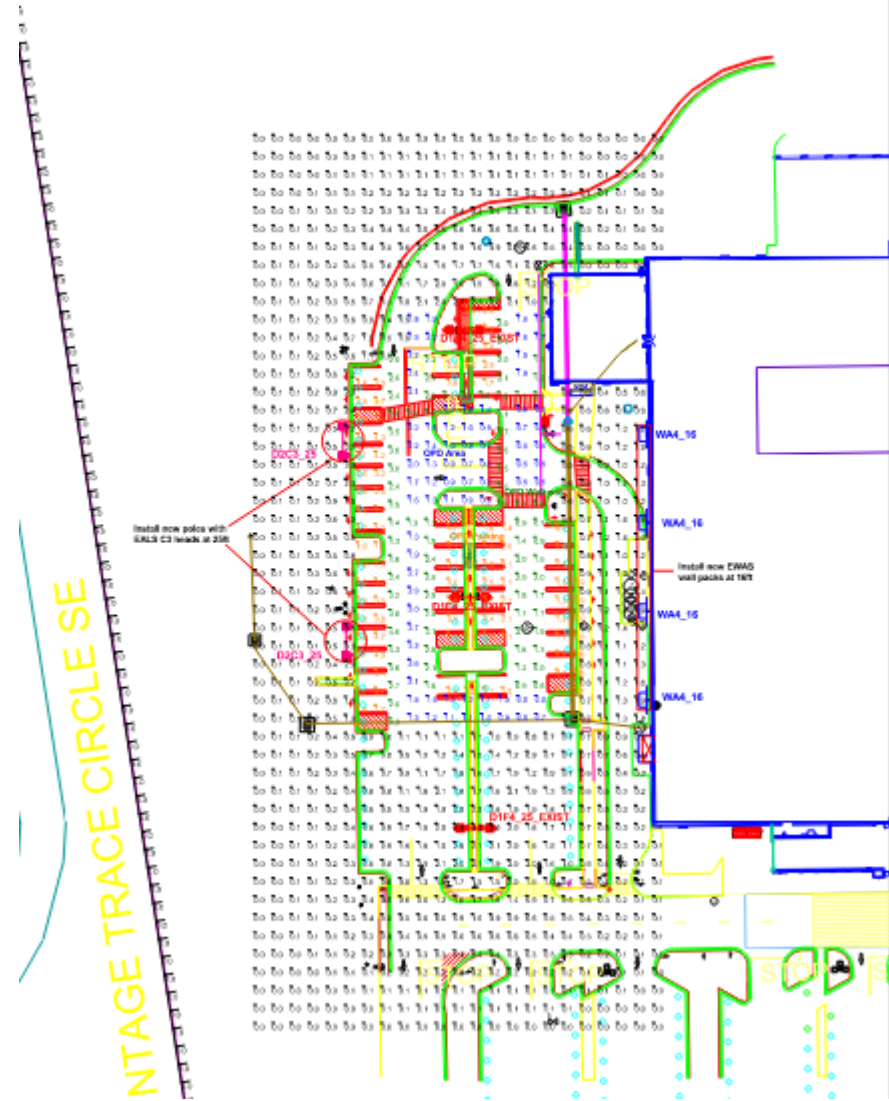


Right Elevation



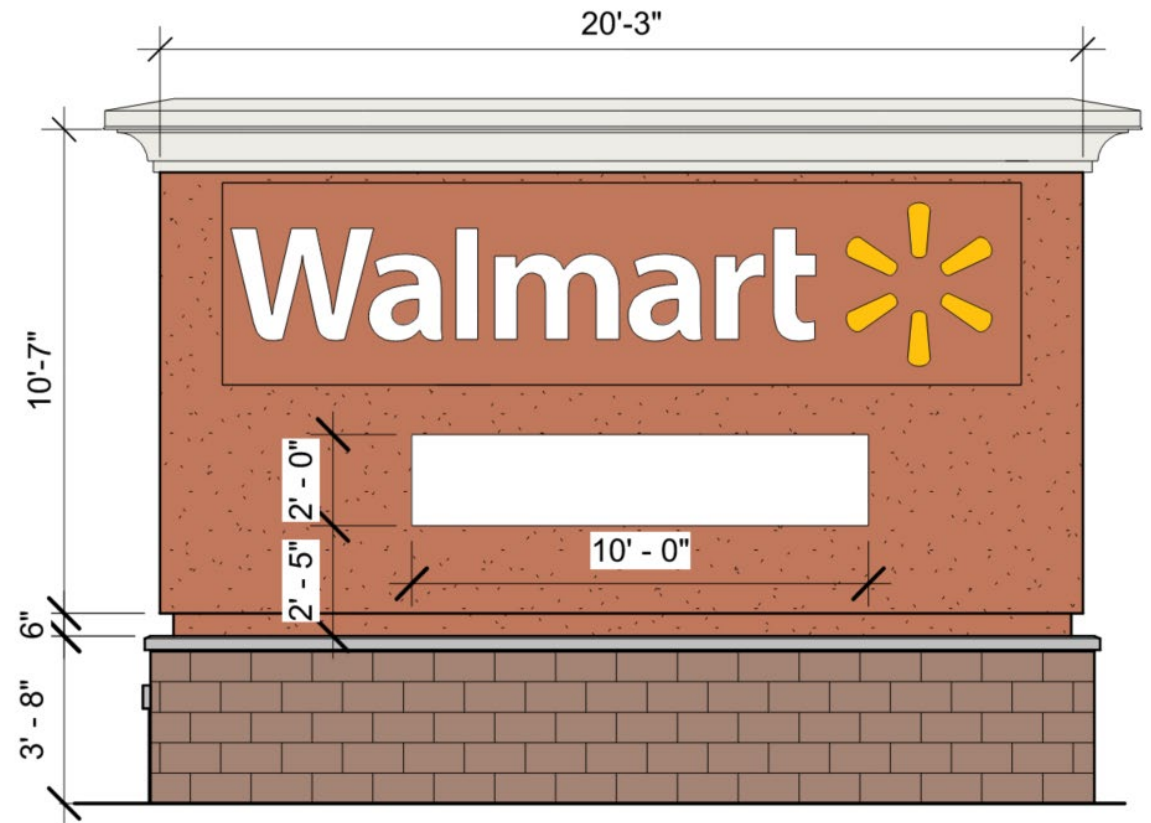
Site Lighting

- ❑ Lighting has been designed in accordance with the Village of Estero Land Development Code for the accessibility and safety of the community. New lighting does not affect neighboring properties as it is designed to have a net 0 before it reaches.
- ❑ Proposed design includes:
 - ❑ Pedestrian lighting
 - ❑ Expansion Parking area lighting
 - ❑ Walkway lighting



Site Signage

- ❑ Monument sign is proposed on the northwest corner at 10'-7" height.
- ❑ 4' tall directional signs will be placed at the driveways.





Summary

- ❑ The proposed development is designed in accordance with all AHJ guidelines, and currently in review with the Village of Estero to ensure the safety and attraction of the Village are met.
 - ❑ This development is a high-quality retail store with an online pickup designated area.
 - ❑ Community space is also provided in the form of outdoor seating and a public space on the Walmart property.
 - ❑ High Quality architectural elements are included to compliment the appearance of the surrounding community.
 - ❑ This addition to the existing location will serve the community along the South Tamiami Trail. Walmart prides itself on being resilient during emergency situations serving our community.
-



Are There Any Questions?