



Contract/Change Order/Task Order  
Request

Project Name: Water Monitoring Assistance 2025-2026

Contractor/Vendor: Johnson Engineering, LLC

Contract No.: 2022-38

Task Order No: STA 15

Change Order No:

Account Number: \_\_\_\_\_

Project String: \_\_\_\_\_

Total Fees: Not to Exceed \$199,560.00

---

Brief Description:

The Contractor will provide the Water Monitoring Assistance in accordance with Exhibit A Scope of Services and fees identified therein, under the terms and conditions outlined in the above referenced Village of Estero Contract number 2022-38.

Jonhson Engineering, LLC

Village of Estero

By: \_\_\_\_\_

By: \_\_\_\_\_

Name: \_\_\_\_\_

Name: Steve Sarkozy

Title: \_\_\_\_\_

Title: Village Manager

Date: \_\_\_\_\_

Date: \_\_\_\_\_

Attachment: Exhibit A

**EXHIBIT A  
SCOPE OF SERVICES**

**EC 2022-38 MISCELLANEOUS PROFESSIONAL SERVICES  
SUPPLEMENTAL TASK AUTHORIZATION**

**FOR**

**WATER MONITORING ASSISTANCE 2025-2026**

---

**A. PROJECT OVERVIEW**

Johnson Engineering, LLC ("CONSULTANT") shall provide water monitoring assistance to The Village of Estero (VILLAGE). The VILLAGE has implemented a water resource monitoring program. The program was designed to improve the VILLAGE's understanding of its water resources. The data can be used to help guide future actions/programs by the VILLAGE. The water quality parameters follow those measured by Lee County to allow direct comparisons.

**B. SCOPE OF SERVICES**

**TASK 1: Monthly Water Quality Sampling and Flow Monitoring**

CONSULTANT will conduct monthly surface water sampling at the eleven (11) water quality monitoring locations shown on the Water Quality Monitoring Location Map, *Attachment I* (47A-2GR, 47B-3GR, 47A-16GR, 47A-17GR, 47A-18GR, 47A-20GR, 47A-21GR, 47A-30GR, 47A-31GR, 47A-32GR, and 47B-33GR).

CONSULTANT will conduct the monthly surface water sampling from October 1, 2025, through September 30, 2026. Sampling of the Estero River locations will be conducted on the same day that Lee County will be sampling nearby locations. Sampling of locations along Halfway Creek will be conducted within one (1) day of the Lee County sample collection at nearby locations. Samples will be collected at each location where water is at least one (1) foot deep. One (1) field blank sample will also be collected each month. CONSULTANT will record field measurements of temperature, pH, specific conductance, dissolved oxygen, and turbidity at each location. CONSULTANT will collect the samples in accordance with applicable Florida Department of Environmental Protection (FDEP) Standard Operating Procedures (SOPs). CONSULTANT will prepare a Chain-Of-Custody (COC) for the samples and deliver them to a state-certified laboratory following proper COC procedures in adherence to established hold times. The samples will be laboratory analyzed for bacteria (enterococcus and E. Coli), nutrients (ammonia, nitrate, nitrite, nitrate + nitrite, organic nitrogen, total Kjeldahl nitrogen, total nitrogen, ortho phosphate, total phosphorus), metals (Al, As, Ba, Be, Ca, Cd, Cr, Cu, Fe, Mg, Mn, Mo, Ni, Pb, Sb, Se, Ti, V, Zr), biochemical oxygen demand, chloride, color, silica, total hardness, total organic carbon and total suspended solids. Flow direction and approximate velocity will also be noted at each of the eleven (11) monitoring locations. In addition, CONSULTANT will record surface water velocity, water depth, and channel area as needed to calculate flow at the four (4) sites labeled on the updated Flow Monitoring Location Map, *Attachment II* (HC@US41, ERSB@SS, ERNB@I75, and ERSB@CW).

**TASK 2: Quarterly Surface Water Level Downloading**

CONSULTANT will download water level data from the seven (7) monitor wells shown on the Water Level Monitoring Location map, *Attachment III* (HC-SW2, HC-SW3, ER-SW1, ERNB-SW1, ERNB-SW2, ERNB-SW3, and ERSB-SW1), at quarterly intervals. CONSULTANT will also download barometric data from the BaroTroll at ER-SW1 as part of this task.

**TASK 3: Data Management**

CONSULTANT will manage the water quality, water level, and flow data in Excel spreadsheets. The digital and lab report data provided by the lab each month will be reviewed as part of the Quality Assurance Quality Control (QAQC) process and the lab will be contacted about any discrepancies. Flow data from two (2) United States Geological Survey (USGS) sites shown on the Flow Monitoring Location Map, *Attachment II* (02291580 and 02291597), will be downloaded from the publicly available USGS database. Water level, flow, and water quality data from Lee County sites in the Village of Estero will be downloaded from the Lee County Natural Resources Department website.

**TASK 4: Annual Water Quality Monitoring Report**

CONSULTANT will prepare a monitoring report covering data collected from October 2025 through September 2026. The report will summarize the data collected using tables and charts which will include the sample date, analytical results, and comparison to nearby Lee County water quality sample results. The report will be provided on or before December 31, 2026.

**C. SCHEDULE**

Upon notice to proceed by the VILLAGE, monitoring will be for the period beginning October 1, 2025, through September 30, 2026. The sampling events will be scheduled based on the Lee County sampling schedule.

**SUB-CONSULTANT SERVICES:****LAB: Laboratory Testing**

Benchmark EnviroAnalytical, Inc. for laboratory testing.



**EXHIBIT B  
COMPENSATION**

**EC 2022-38 MISCELLANEOUS PROFESSIONAL SERVICES  
SUPPLEMENTAL TASK AUTHORIZATION**

**FOR**

**WATER MONITORING ASSISTANCE 2025-2026**

CONSULTANT fees for Tasks 1 through 4 will be on a Time and Materials basis per *Attachment 1 to Exhibit B, Professional Services Hourly Rate Schedule*. The Subconsultant fee will be billed on a Time & Materials basis. The total compensation not to exceed shall be \$ 199,560.

For services provided and performed by CONSULTANT for providing and performing the Task(s) set forth and enumerated in Exhibit A entitled "Scope of Services", the VILLAGE shall compensate the CONSULTANT as follows:

<b>TASK</b>	<b>ITEM</b>	<b>AMOUNT</b> (Estimated if T&M)	<b>FEE TYPE</b> (LS; T&M)
1	Monthly Water Quality Sampling and Flow Monitoring (Oct 2025 through Sept 2026)*	\$66,000.00	T&M
2	Quarterly Surface Water Level Downloading (4 quarters)**	\$12,000.00	T&M
3	Data Management	\$5,000.00	T&M
4	Annual Water Quality Monitoring Report (1 year)	\$10,000.00	T&M
<b>TOTAL COMPENSATION FOR CONSULTANT'S SERVICES:</b>		<b>\$93,000.00</b>	<b>T&amp;M</b>

\* Task 1: To be billed at approximately \$5,500 per month.

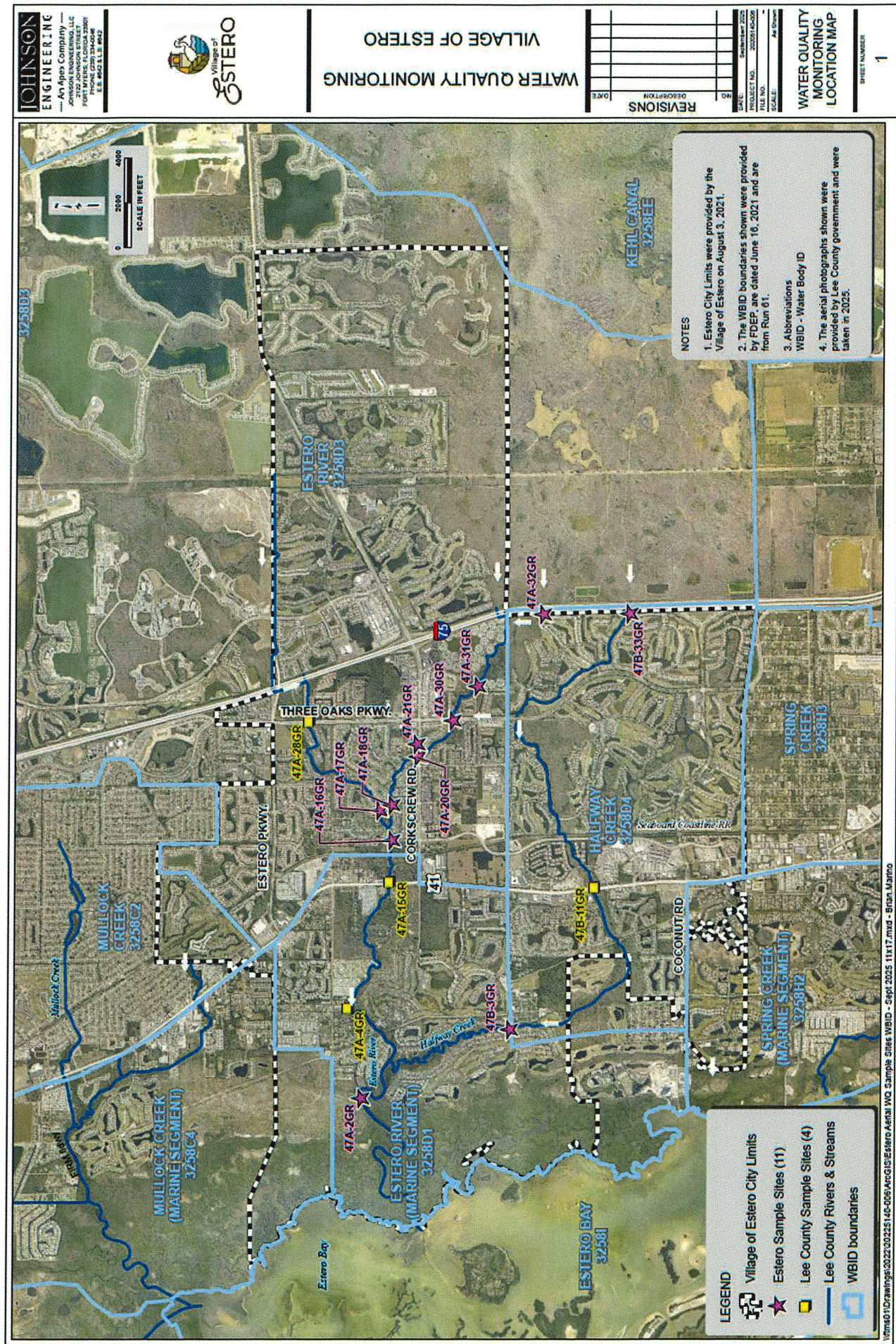
\*\* Task 2: To be billed at approximately \$3,000 per quarter.

For services of CONSULTANT's Sub-Consultant engaged to perform or furnish services, the VILLAGE shall compensate the CONSULTANT as follows:

<b>TASK</b>	<b>SUB-CONSULTANT</b>	<b>AMOUNT</b> (Estimated if T&M)	<b>FEE TYPE</b> (LS; T&M)
LAB	Cost for lab analysis of the samples is estimated at \$740 per sample x 11 samples for 12 monthly events plus 12 field blanks	\$106,560.00	T&M
<b>TOTAL COMPENSATION FOR SUB-CONSULTANT'S SERVICES:</b>		<b>\$106,560.00</b>	<b>T&amp;M</b>

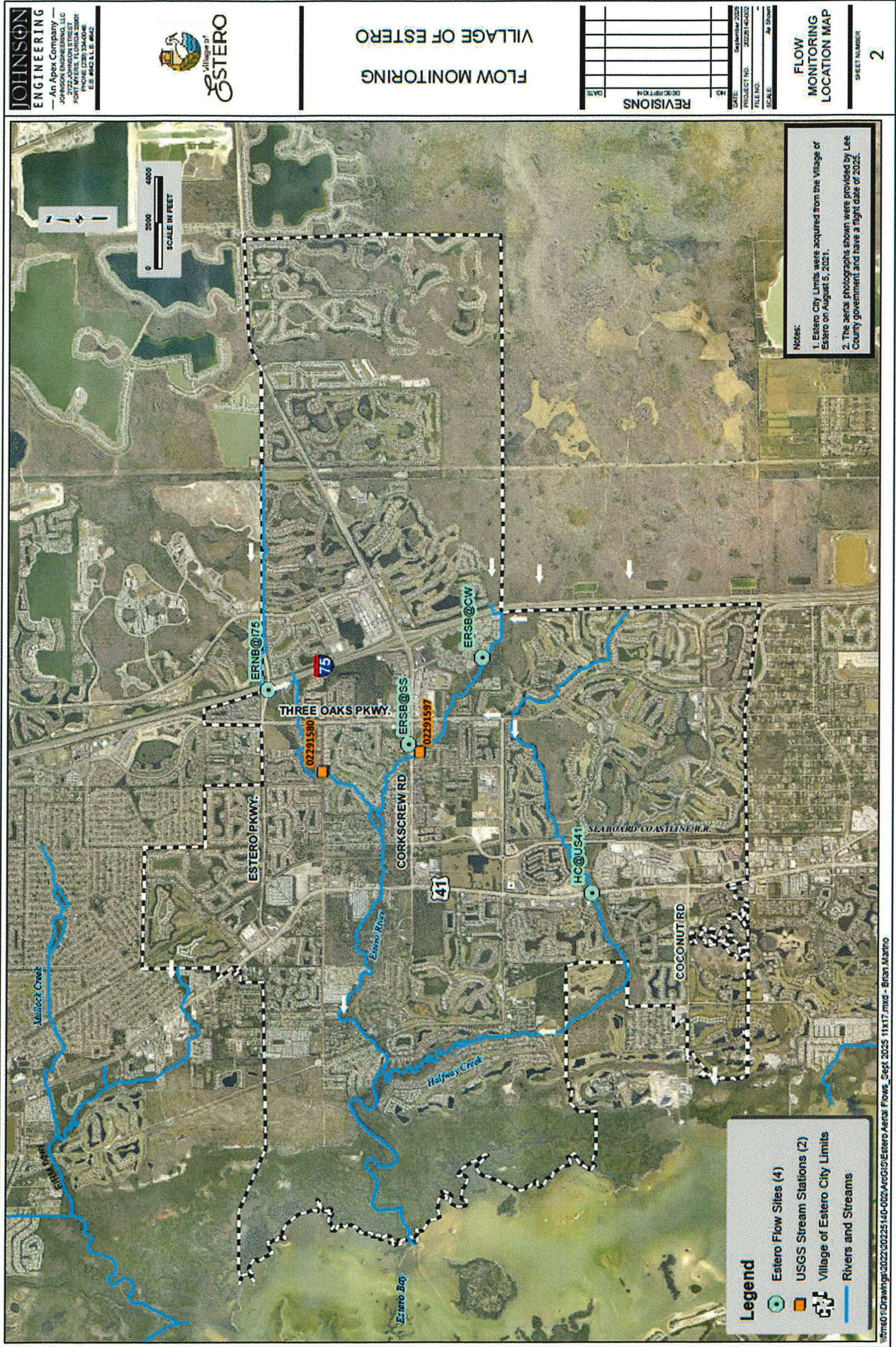
<b>TOTAL COMPENSATION, INCLUDING SUB-CONSULTANTS:</b>	<b>\$199,560.00</b>	<b>T&amp;M</b>
---	---------------------	----------------



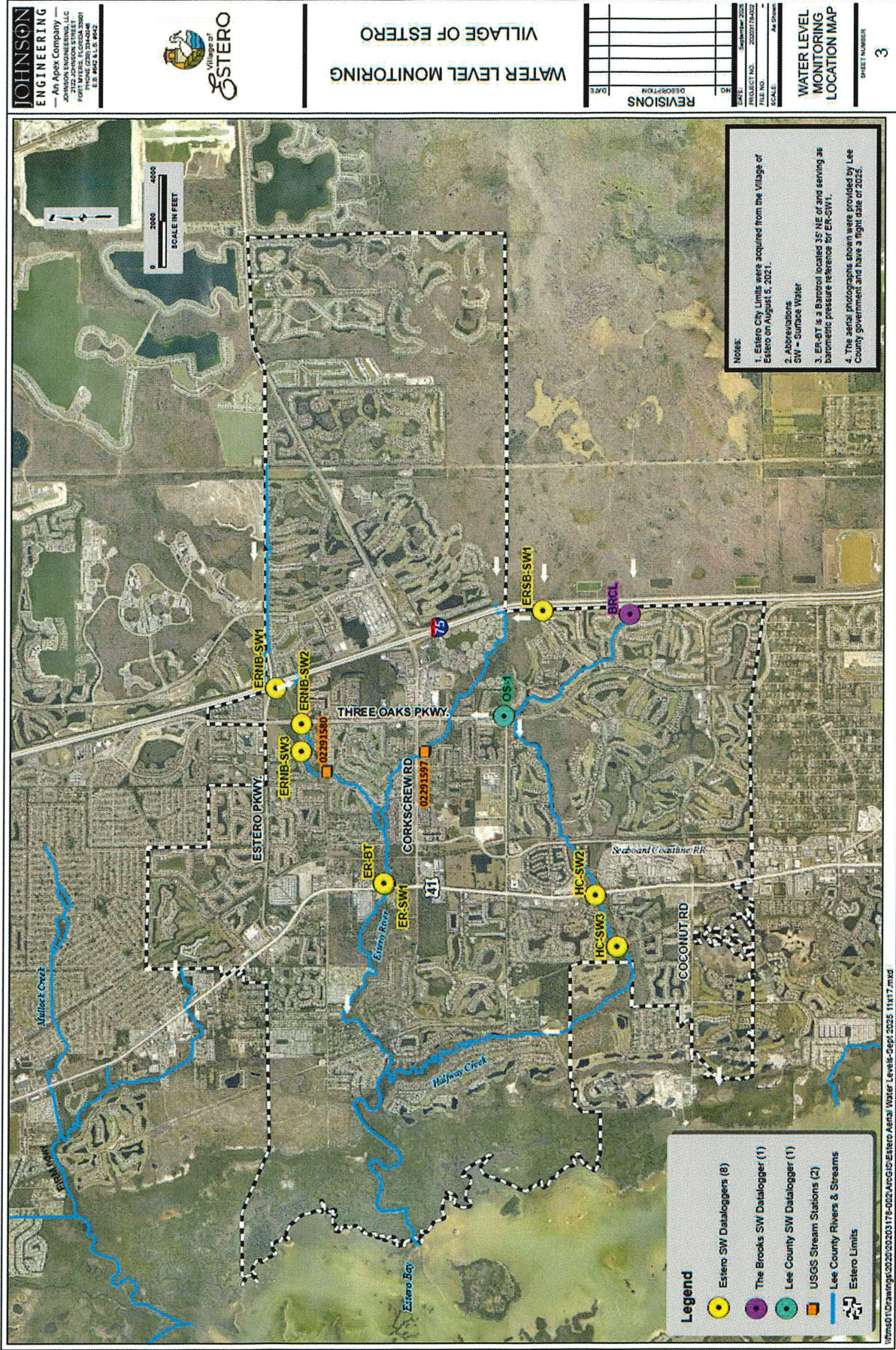




Attachment II to Exhibit A











**ATTACHMENT I TO EXHIBIT B  
PROFESSIONAL SERVICES  
HOURLY RATE SCHEDULE  
May 15, 2025**

**Professional**

9	\$330
8	\$285
7	\$262
6	\$230
5	\$205
4	\$187
3	\$170
2	\$145
1	\$135

**Technician**

6	\$188
5	\$160
4	\$138
3	\$117
2	\$92
1	\$82

**Administrative**

3	\$108
2	\$98
1	\$80

**Field Crew**

4-Person	\$285
3-Person	\$245
2-Person	\$193
1-Person	\$145

**Field Equipment**

*Field Equipment on Separate Schedule*

**Expert Witness** \$445

**Reimbursable Expenses  
and Sub-Consultants** Cost + 10%

**Construction Engineering and Inspection  
(CEI Services)**

CEI Services Manager	\$220
CEI Senior Project Administrator	\$190
CEI Project Administrator	\$172
Contract Support Specialist	\$145
Senior Inspector	\$132
CEI Inspector III	\$119
CEI Inspector II	\$110
CEI Inspector I	\$98
Compliance Specialist	\$108
CEI Inspector's Aide	\$80