

# **Coconut Point MPD PDA**

## **Public Information Meeting**

January 13, 2026

# Project Team

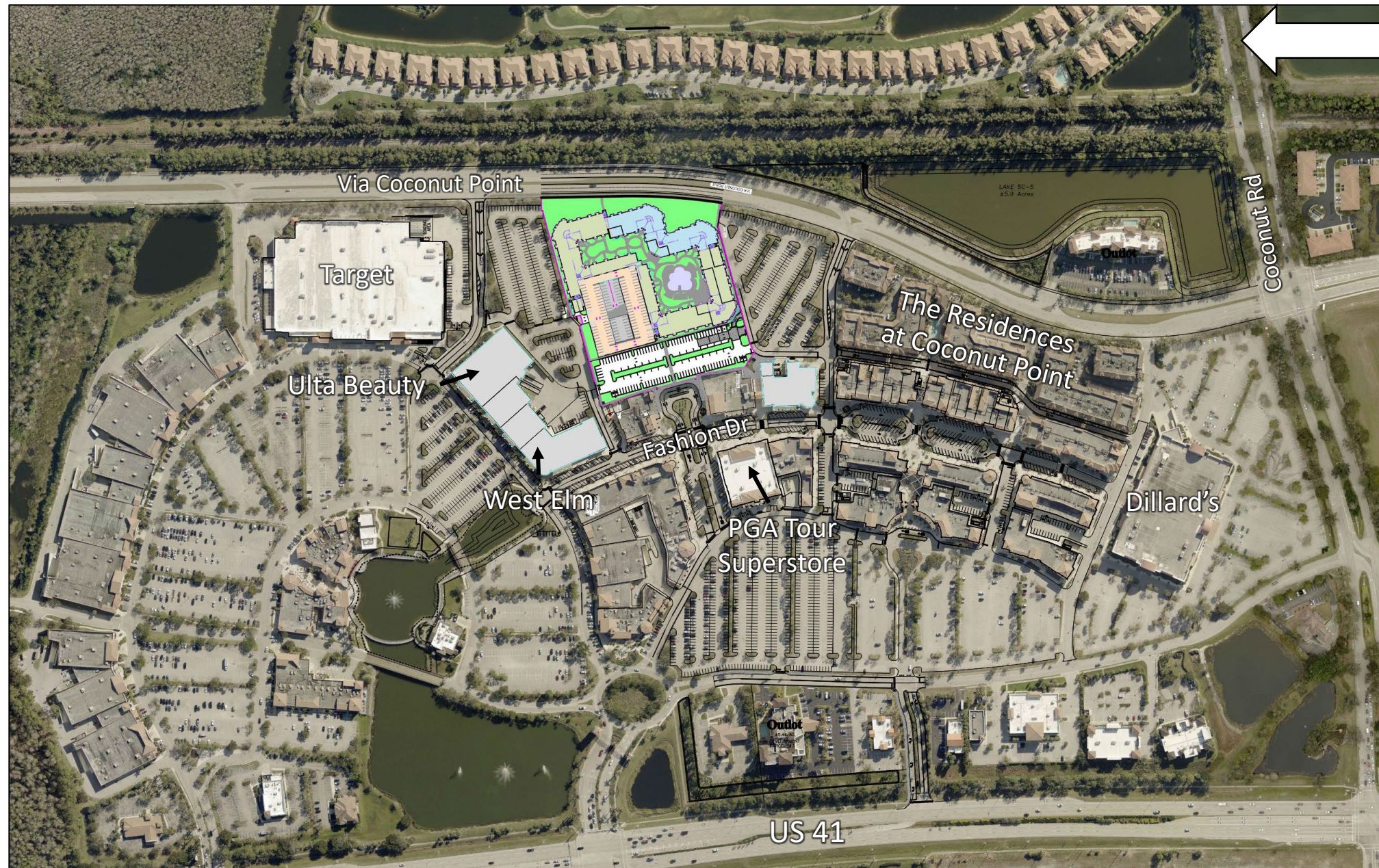


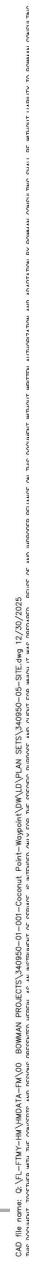
# Request

- Amend the Coconut Point MPD/DRI to allow for the development of a maximum of 365 multifamily dwelling units within Tract 2A.
- Multifamily dwelling units are an existing permitted use within Tract 2A.
- The request does not increase the number of net new external peak hour trips established in the DRI Development Order.





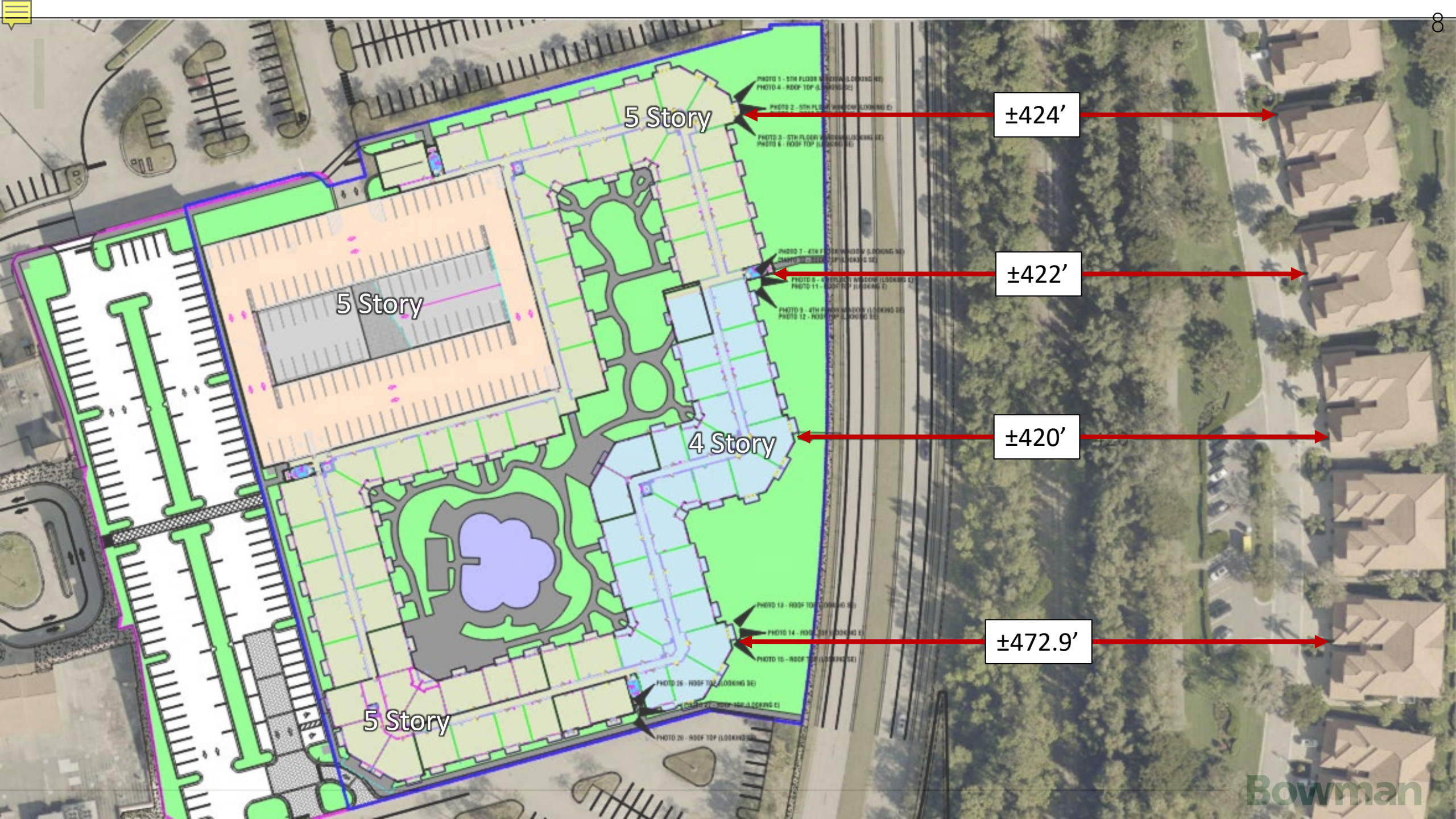




THESE DRAWINGS ARE NOT  
APPROVED UNLESS SIGNED  
AND SEALED BELOW :

CHARLES L. KREBS, P.E.  
FL. LICENSE NO. 56835  
10/10/2005

**nan**



5 Story

5 Story

4 Story

5 Story

±424'

±422'

±420'

±472.9'

PHOTO 1 - 5TH FLOOR WINDOW (LOOKING NE)  
PHOTO 4 - ROOF TOP (LOOKING SE)

PHOTO 2 - 5TH FLOOR WINDOW (LOOKING E)

PHOTO 3 - 5TH FLOOR WINDOW (LOOKING SE)  
PHOTO 6 - ROOF TOP (LOOKING SE)

PHOTO 7 - 4TH FLOOR WINDOW (LOOKING NE)  
PHOTO 10 - ROOF TOP (LOOKING SE)

PHOTO 8 - 4TH FLOOR WINDOW (LOOKING E)  
PHOTO 11 - ROOF TOP (LOOKING E)

PHOTO 9 - 4TH FLOOR WINDOW (LOOKING SE)  
PHOTO 12 - ROOF TOP (LOOKING SE)

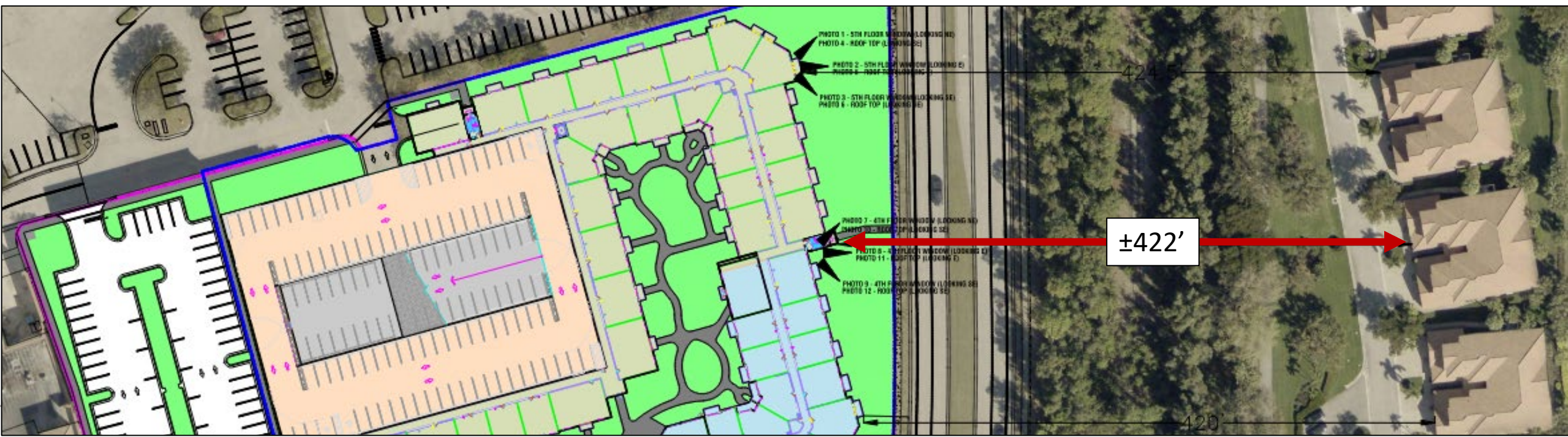
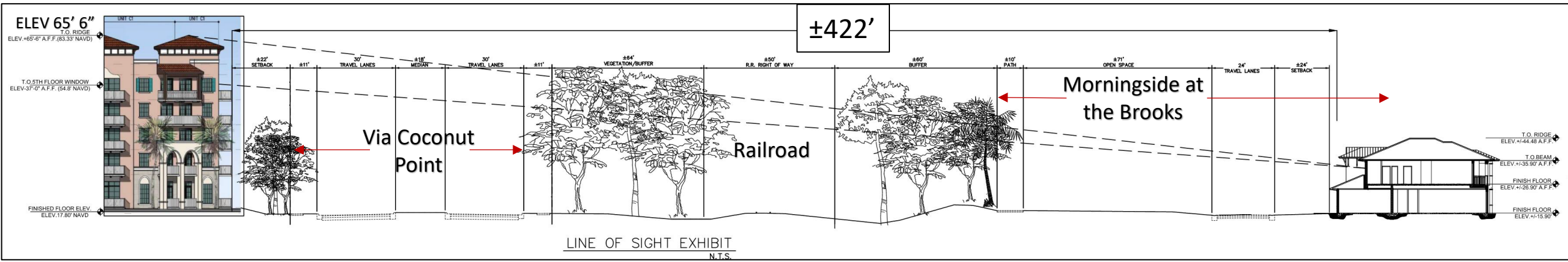
PHOTO 13 - ROOF TOP (LOOKING SE)

PHOTO 14 - ROOF TOP (LOOKING E)

PHOTO 15 - ROOF TOP (LOOKING SE)

PHOTO 25 - ROOF TOP (LOOKING SE)

PHOTO 26 - ROOF TOP (LOOKING SE)



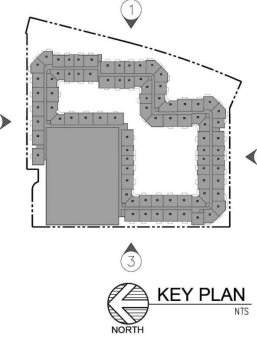


1 EAST ELEVATION



2 SOUTH ELEVATION

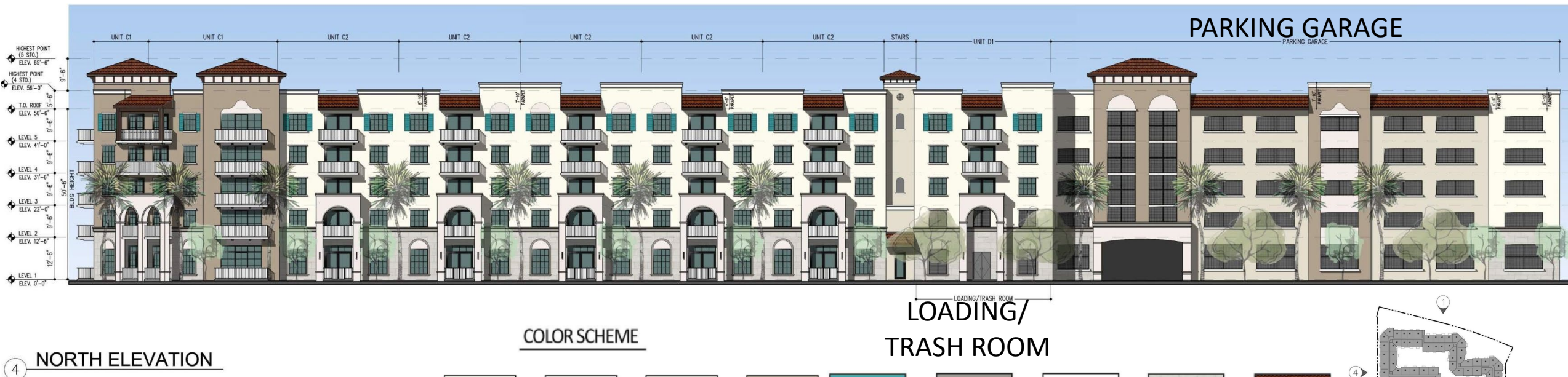
COLOR SCHEME



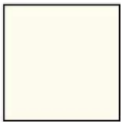


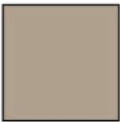







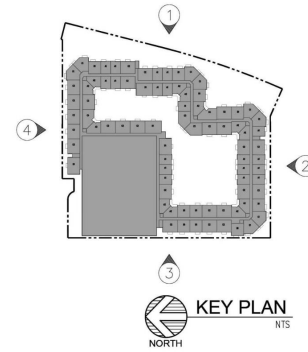
# PARKING GARAGE

11



## COLOR SCHEME

								
BASE ALABASTER SW 7008	BASE MODERATE WHITE SW 6140	BASE ACCESSIBLE BEIGE SW 7036	BASE TONY TAUPE SW 7038	ACCENT AQUARIUM SW 6767	ACCENT PAVESTONE SW 7642	ACCENT ULTRA WHITE SW 9500	PRECAST STONE VENEER	ROOF TILE



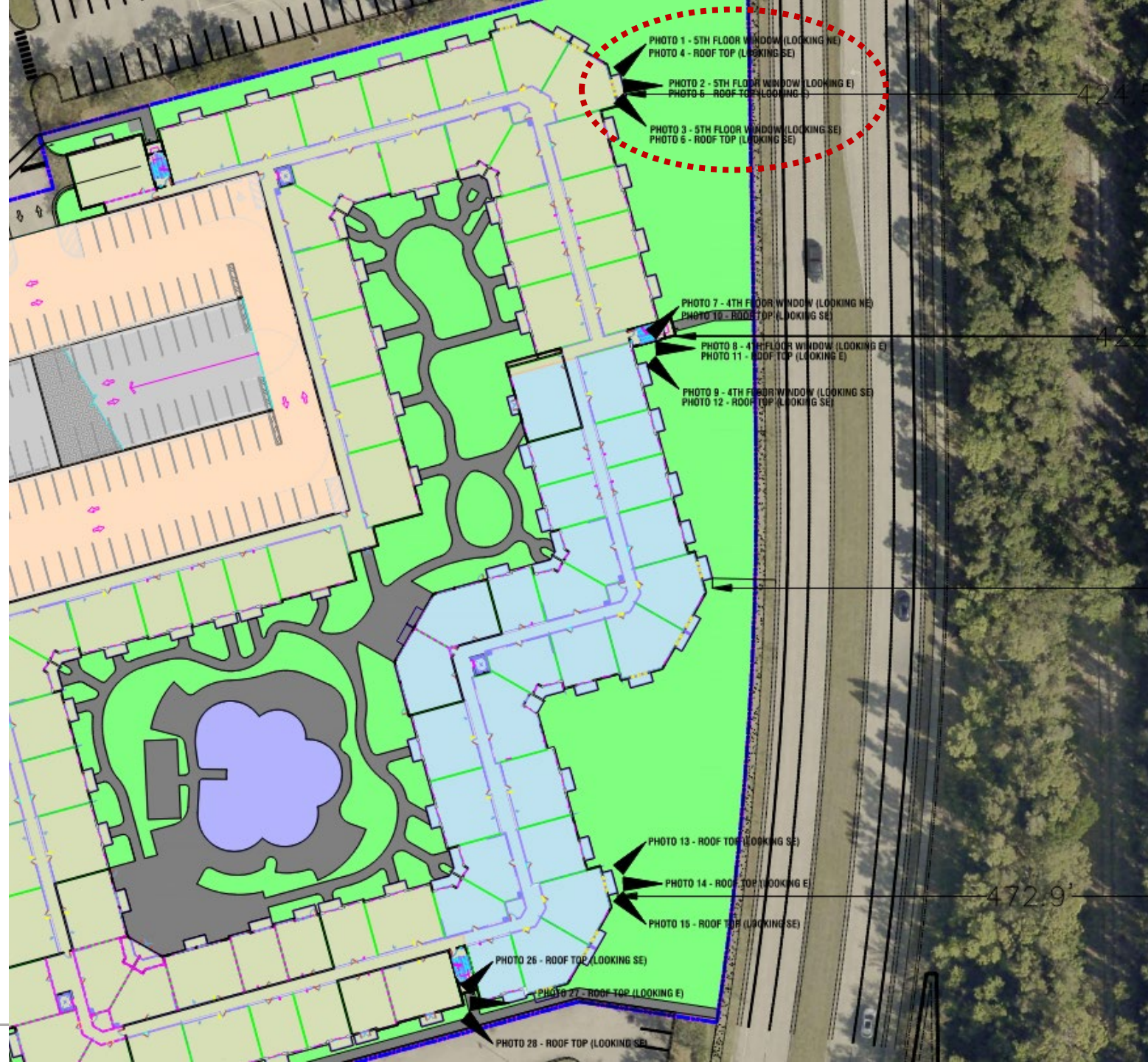




PHOTO #1



PHOTO #2

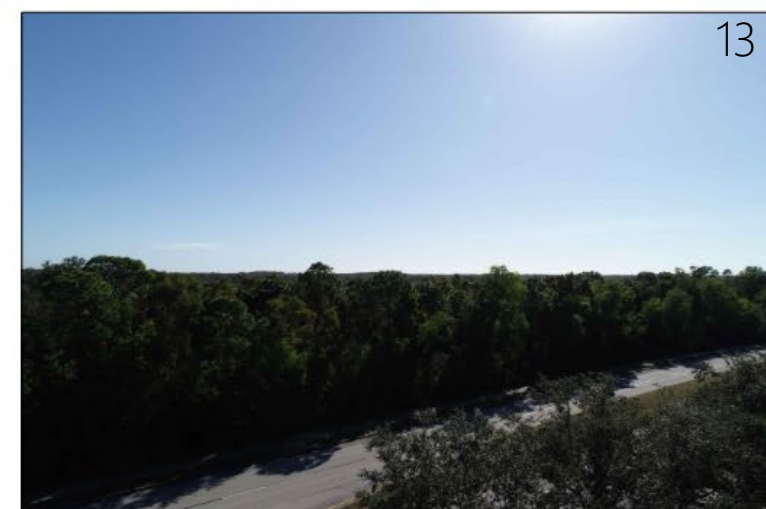


PHOTO #3

NORTHEAST CORNER  
5TH FLOOR WINDOW VIEW



PHOTO #4



PHOTO #5



PHOTO #6

NORTHEAST CORNER  
ROOF RIDGE VIEW

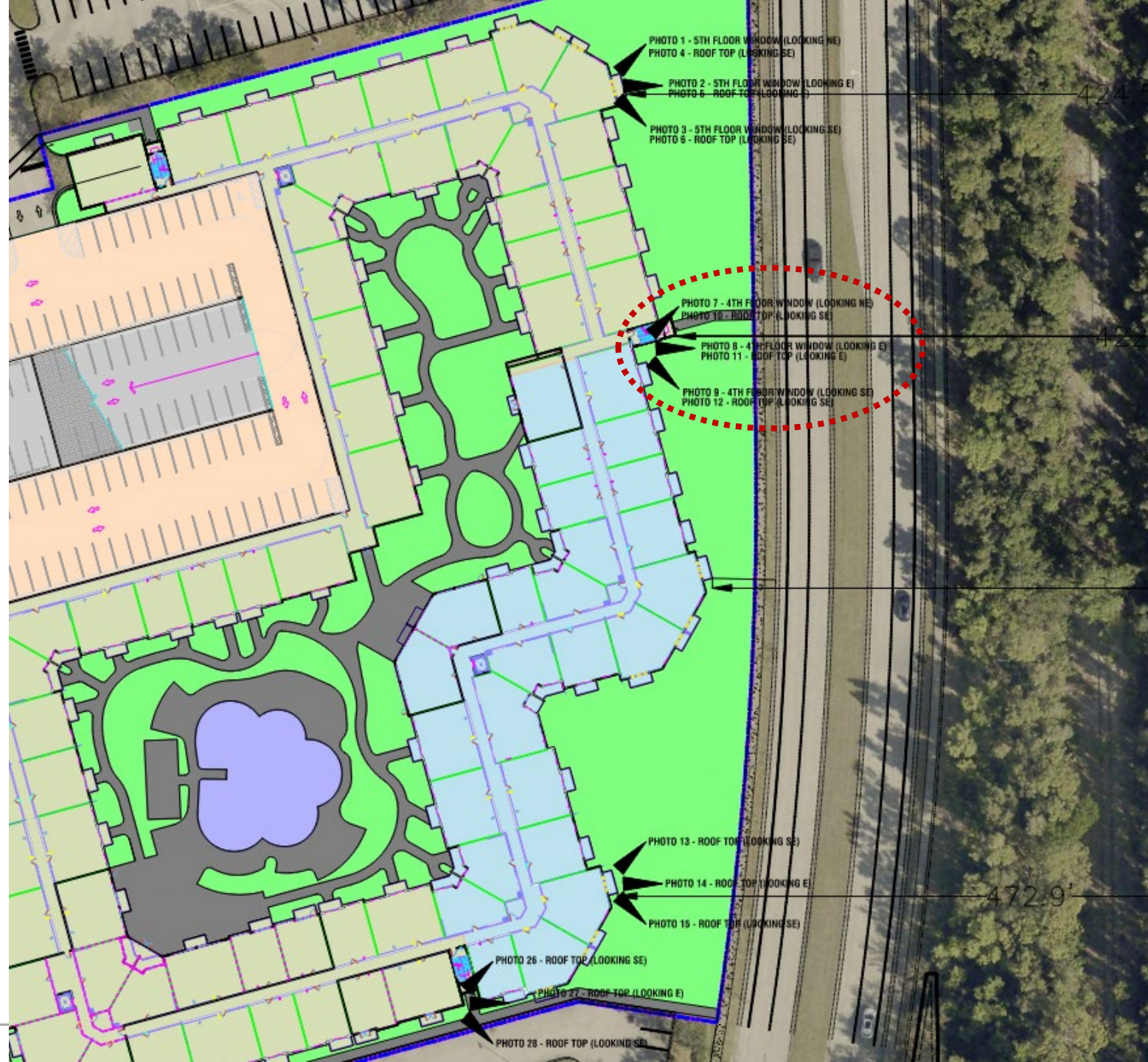




PHOTO #7



PHOTO #8



PHOTO #9

4 FLOOR TRANSITION  
4TH FLOOR WINDOW VIEW



PHOTO #10



PHOTO #11

4 FLOOR TRANSITION  
ROOF RIDGE VIEW



PHOTO #12





PHOTO #13



PHOTO #14



PHOTO #15

SOUTHEAST CORNER  
4TH FLOOR ROOF RIDGE VIEW



PHOTO #16



PHOTO #17



PHOTO #18

SOUTHEAST CORNER  
5TH FLOOR ROOF RIDGE VIEW

A large, light blue graphic of the letters 'Q&A' serves as a background. The 'Q' is on the left, the ampersand is in the middle, and the 'A' is on the right. The word 'Questions?' is written in white, bold, sans-serif font across the middle of the 'Q' and the ampersand.

Questions?