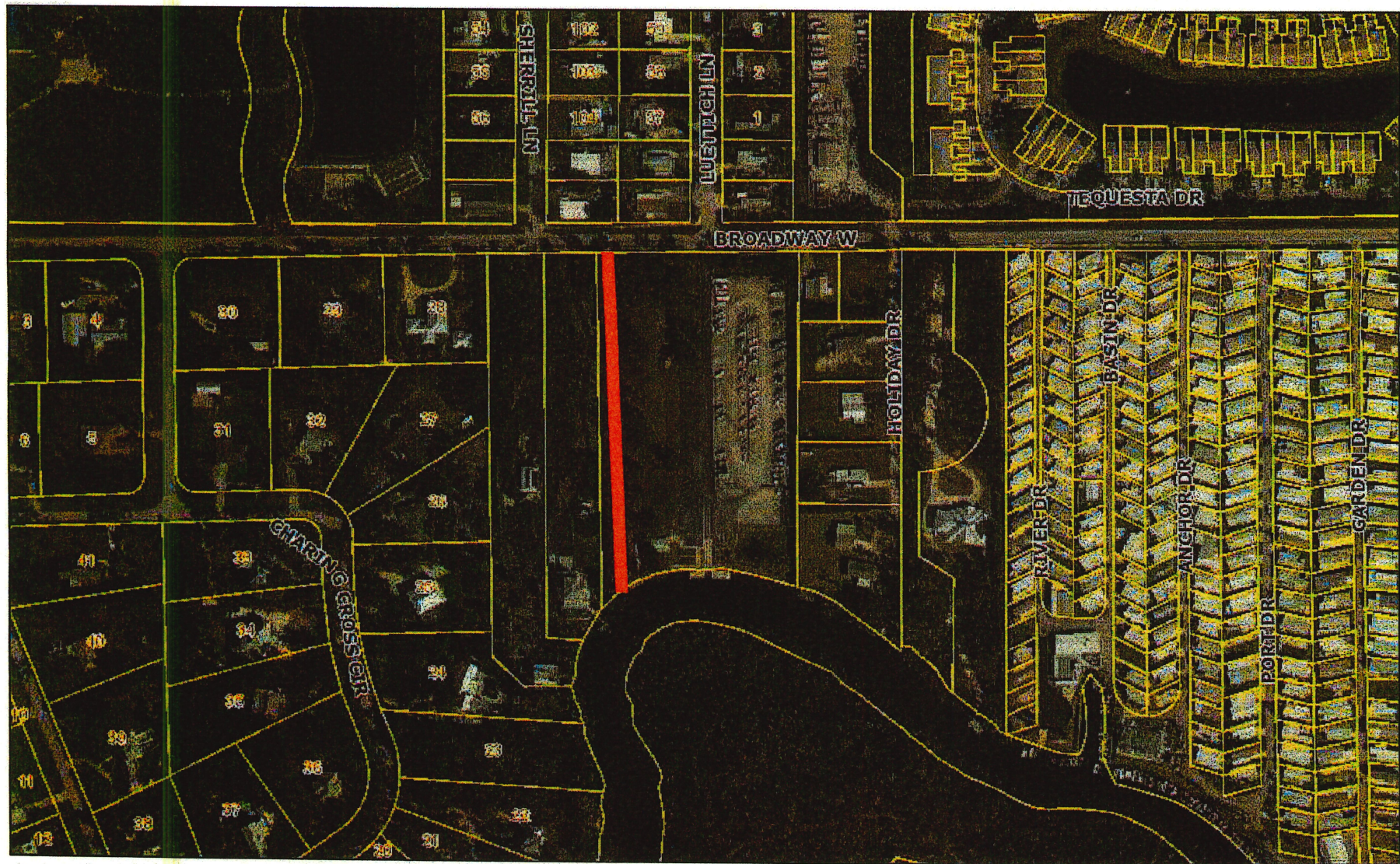


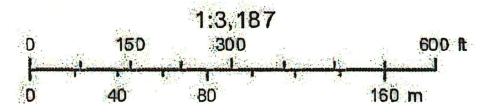
LOCATION #1- BROADWAY-WEST-RIVERWOOD BOAT RAMP



September 4, 2025

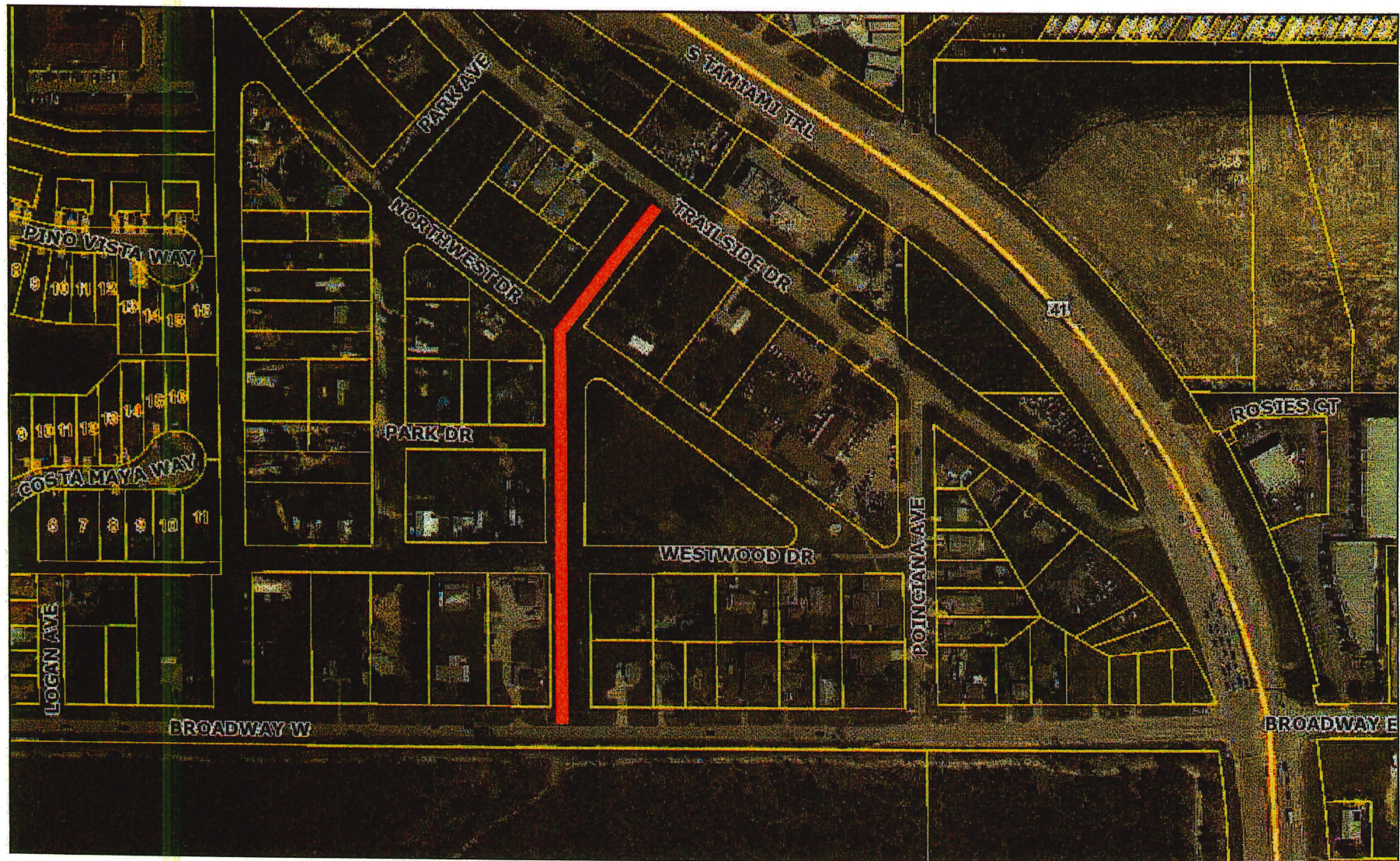
Air Photos: 2025 Hi-Res (3 inch)

- | | | | | |
|--------------------|------------------|--------------------|----------------|--------------|
| Hospital Locations | School Locations | County Boundary | US 41 | Parcels Near |
| Library Locations | School Locations | Major Roads Medium | Other Highways | |
| CCC_Parks | I-75 | Other Roads | | |



This map is NOT a legal land survey and should not be used or relied upon as such. No warranties, express or implied, are provided with the data, use, accuracy or interpretation.

LOCATION #2 - BROADWAY WEST TO TRAILSIDE DRIVE



September 4, 2025

Air Photos: 2025 Hi-Res (3 inch)



This map is NOT a legal land survey and should not be used or relied upon as such. No warranties, express or implied, are provided with the data, use, accuracy or interpretation.

LOCATION #3 - CHARING CROSS CIRCLE TO RIVER



September 4, 2025

Air Photos: 2025 Hi-Res (3 inch)

- | | | | | |
|--------------------|------------------|--------------------|----------------|--------------|
| Hospital Locations | School Locations | County Boundary | US 41 | Parcels Near |
| Library Locations | School Locations | Major Roads Medium | Other Highways | |
| CCC_Parks | I-75 | Other Roads | | |



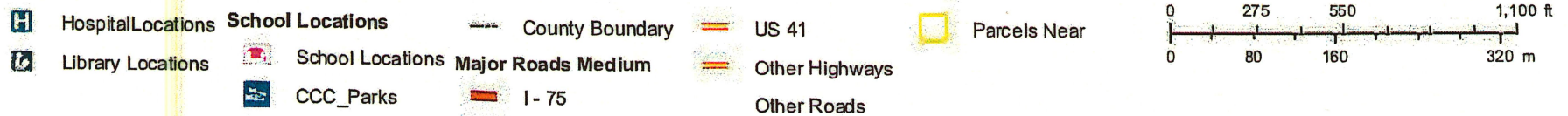
This map is NOT a legal land survey and should not be used or relied upon as such. No warranties, express or implied, are provided with the data, use, accuracy or interpretation.

LOCATION #4- BROADWAY WEST NEAR FPL PROPERTY



September 4, 2025

Air Photos: 2025 Hi-Res (3 inch)



This map is NOT a legal land survey and should not be used or relied upon as such. No warranties, express or implied, are provided with the data, use, accuracy or interpretation.

LOCATION #5 - RAILROAD DITCH BROADWAY EAST NORTH TO CASCADES



November 14, 2025

Air Photos: 2025 Hi-Res (3 inch)



Hospital Locations

School Locations

County Boundary

US 41



Parcels Near



Library Locations



School Locations

Major Roads Medium

Other Highways

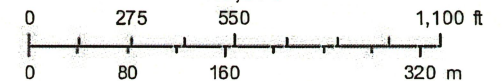


CCC_Parks

I - 75

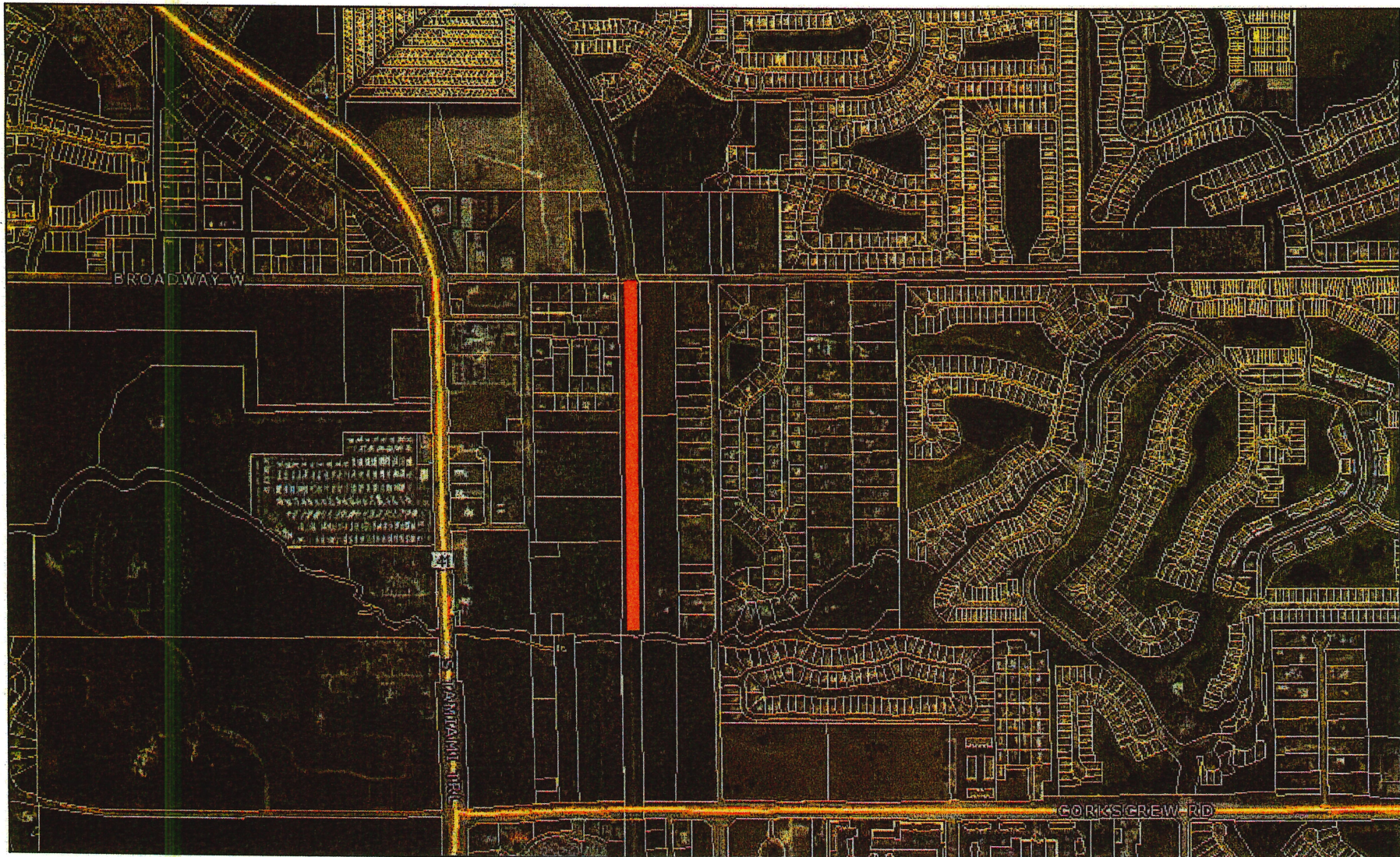
Other Roads

1:5,975



This map is NOT a legal land survey and should not be used or relied upon as such. No warranties, express or implied, are provided with the data, use, accuracy or interpretation.


LOCATION #6 - BROADWAY EAST SOUTH TO THE ESTERO RIVER



September 4, 2025

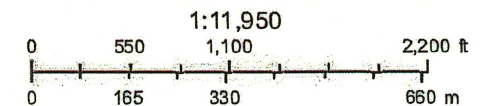
Air Photos: 2025 Hi-Res (3 inch)

 Hospital Locations

 Library Locations

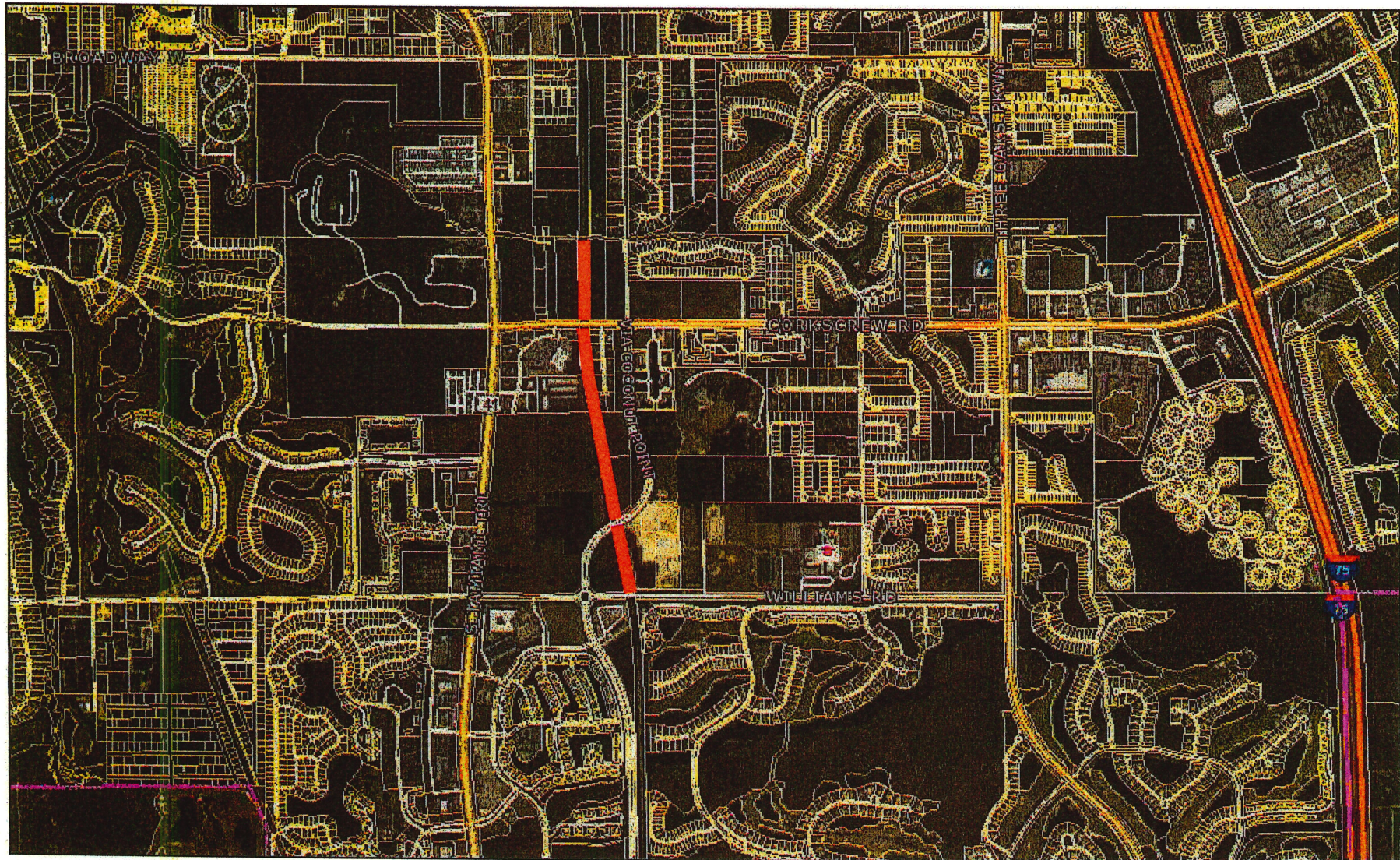
School Locations

 School Locations



This map is NOT a legal land survey and should not be used or relied upon as such.
No warranties, express or implied, are provided with the data, use, accuracy or interpretation.

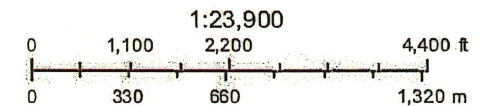
LOCATION #7 - ESTERO RIVER SOUTH TO WILLIAMS ROAD



September 4, 2025

Air Photos: 2025 Hi-Res (3 inch)

- | | | | |
|--------------------|------------------|--------------------|----------------|
| Hospital Locations | School Locations | County Boundary | US 41 |
| Library Locations | School Locations | Major Roads Medium | Other Highways |
| CCC_Parks | | I-75 | Other Roads |



This map is NOT a legal land survey and should not be used or relied upon as such. No warranties, express or implied, are provided with the data, use, accuracy or interpretation.