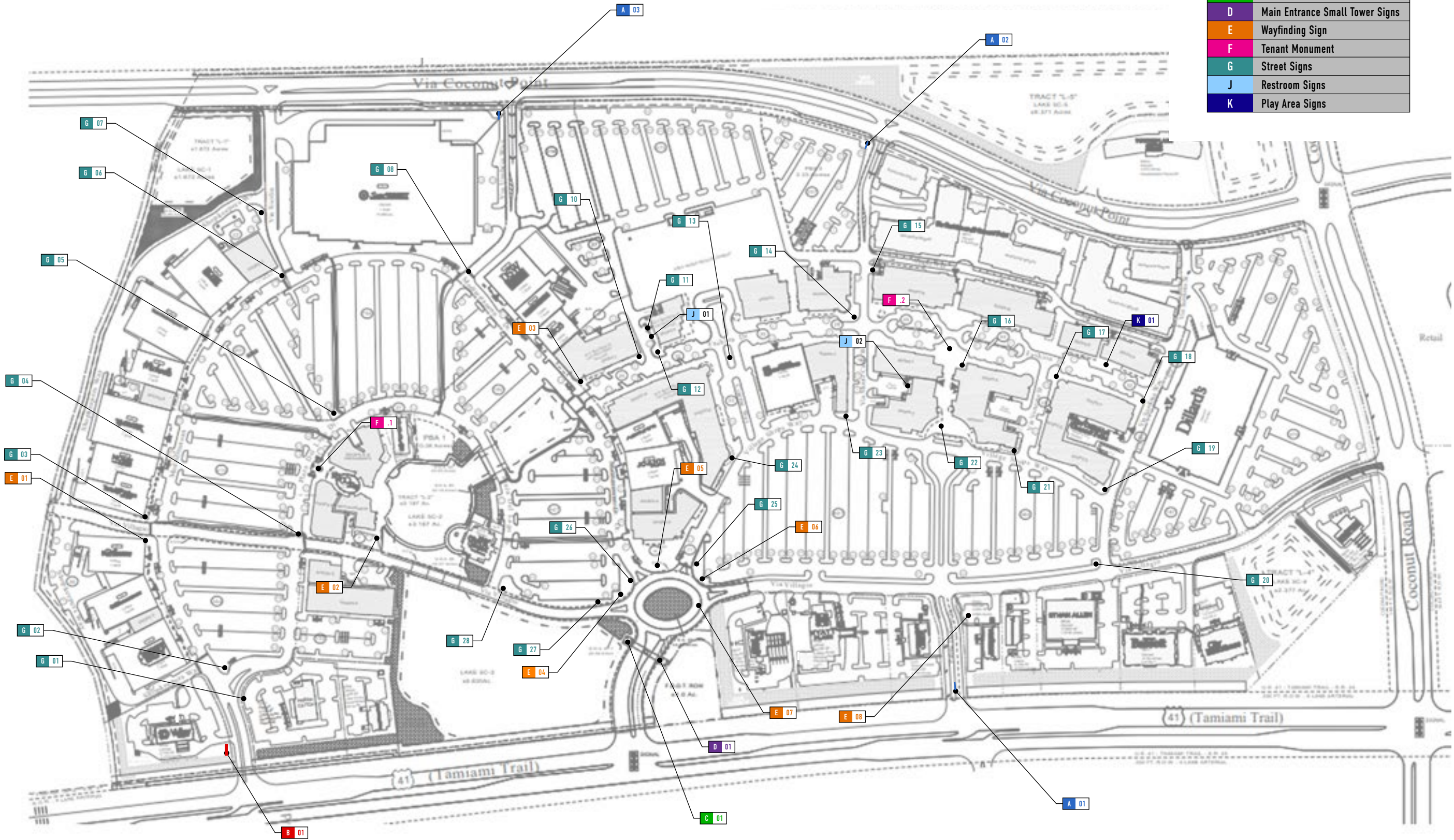




# Coconut Point - Site Signage Refresh

RSVD 01.14.2026

J:\Drawing Library\Coconut Point\2025\Job Scope\Design Intent



SIGN LEGEND	
Sign Type	Sign Description
Site Signage / Wayfinding	
A	Monument Sign
B	Pylon Sign
C	Main Entrance Large Tower Signs
D	Main Entrance Small Tower Signs
E	Wayfinding Sign
F	Tenant Monument
G	Street Signs
J	Restroom Signs
K	Play Area Signs



**INTEGRATED SIGN & GRAPHIC, INC.**  
5801 Kingpost Court  
Lexington, KY 40509  
Toll Free 800.755.7956  
Office 859.263.2800  
Online [integratedsign.com](http://integratedsign.com)

#### DESIGN INTENT DOCUMENT

© Copyright Integrated Sign & Graphic, Inc. This design/layout is an unpublished work of Integrated Sign & Graphic, Inc. which expressly reserves its common law rights pursuant to Title 17 Section 2 of the United States Code to prevent unauthorized copying. Publication or use of this design/layout, and to obtain damages thereon. This design/layout remains the property of Integrated Sign & Graphic, Inc. unless purchased by contractual sales agreement.

Property Owner

**Simon Property Group**

Name of Project

**Coconut Point  
Comprehensive  
Sign Package**

Project Address

**23106 Fashion Drive  
Estero, FL 33928**

ISG Project Number

**025072**

Drawn By

**BD**

Quantity

**1**

Original Drawing Date

**06.02.2025**

Issued Revisions

**① 06.25.2025 ⑧ 01.14.2026**

**② 07.08.2025**

**③ 07.25.2025**

**④ 09.30.2025**

**⑤ 11.12.2025**

**⑥ 11.24.2025**

**⑦ 12.04.2025**

Drawing Title

**Site Map**

**Page 02**

# EXTERIOR SIGN SCHEDULE

NOTE: All quantities and locations depicted are not exact and will require site survey to verify specific locations and better determine site-lines and visibility angles.  
Sign fabricator to confirm all final sign messaging and locations with client or general contractor prior to fabrication. ISG to be notified of any changes.

SIGN ID	SIGN DESCRIPTION	QTY.	CITY CODE DEFINITION	ILLUMINATION	NOTES:
A	Monument Sign	3	Freestanding Ground Sign	Illuminated	
B	Pylon Sign	1	Freestanding Ground Sign	Illuminated	
C	Main Entrance Large Tower Signs	4	Building-Affixed Sign	Illuminated	Small tower needs all 4 sides w/ signs replaced and new signs installed
D	Main Entrance Small Tower Signs	3	Building-Affixed Sign	Illuminated	Small tower needs 3 sides w/ signs replaced and new signs installed
E	Wayfinding Sign	8	Freestanding Pole Sign	Non-Illuminated	
F	Tenant Monument	2	Freestanding Ground Sign	Illuminated	
G	Street Signs	28	Freestanding Pole Sign	Non-Illuminated	
J	Restroom Blade Sign	2	Building-Affixed Sign	Illuminated	
K	Play Area Sign	1	Building-Affixed Sign	Non-Illuminated	



**INTEGRATED SIGN & GRAPHIC, INC.**  
5801 Kingpost Court  
Lexington, KY 40509  
Toll Free 800.755.7956  
Office 859.263.2800  
Online [integratedsign.com](http://integratedsign.com)

**DESIGN INTENT DOCUMENT**

© Copyright Integrated Sign & Graphic, Inc. This design/layout is an unpublished work of Integrated Sign & Graphic, Inc. which expressly reserves its common law rights pursuant to Title 17 Section 2 of the United States Code to prevent unauthorized copying. Publication or use of this design/layout, and to obtain damages thereon. This design/layout remains the property of Integrated Sign & Graphic, Inc. unless purchased by contractual sales agreement.

Property Owner  
**Simon Property Group**

Name of Project  
**Coconut Point Comprehensive Sign Package**

Project Address  
**23106 Fashion Drive  
Estero, FL 33928**

ISG Project Number  
**025072**

Drawn By <b>BD</b>	Quantity <b>1</b>
-----------------------	----------------------

Original Drawing Date  
**06.02.2025**

Issued Revisions

1 06.25.2025 8 01.14.2026

2 07.08.2025

3 07.25.2025

4 09.30.2025

5 11.12.2025

6 11.24.2025

7 12.04.2025

Drawing Title






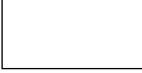
**Site Map**



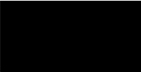







Paint

P1		SW7512 Pavilion Beige	P4		SW7048 Urbane Bronze
P2		SW6140 Moderate White	P5		Simon White
P3		Simon Black	P6		Paint to match PMS 5763

Material

M1		.125" Aluminum	M4		Day/Night Acrylic
M2		.063" Aluminum	M5		1/2" Clear Acrylic
M3		7328 White Acrylic	M5		3/16" White Translucent Acrylic

Vinyl

V1		3M Reflective Black	V5		PMS 157c
V2		Black Opaque Vinyl	V6		PMS 5763c
V3		PMS 5773c	V7		PMS 1355c
V4		PMS TBD	V8		PMS 872c

Logos

Simon Lockup



Simon Lockup  
Tower Entrance Only



Non-illuminated logo will be a  
digitally printed vinyl graphic



Font

Simon Circular Medium  
ABCDEFGHIJKLMNOPQRSTUVWXYZ  
abcdefghijklmnopqrstuvwxyz 1234567890



INTEGRATED SIGN & GRAPHIC, INC.  
5801 Kingpost Court  
Lexington, KY 40509  
Toll Free 800.755.7956  
Office 859.263.2800  
Online integratedsign.com

DESIGN INTENT DOCUMENT

© Copyright Integrated Sign & Graphic, Inc. This design/layout is an unpublished work of Integrated Sign & Graphic, Inc. which expressly reserves its common law rights pursuant to Title 17 Section 2 of the United States Code to prevent unauthorized copying. Publication or use of this design/layout, and to obtain damages thereon. This design/layout remains the property of Integrated Sign & Graphic, Inc. unless purchased by contractual sales agreement.

Property Owner  
Simon Property Group

Name of Project  
Coconut Point  
Comprehensive  
Sign Package

Project Address  
23106 Fashion Drive  
Estero, FL 33928

ISG Project Number  
025072

Drawn By BD	Quantity 1
----------------	---------------

Original Drawing Date  
06.02.2025

Issued Revisions  
A 06.25.2025 B 01.14.2026

C 07.08.2025

D 07.25.2025

E 09.30.2025

F 11.12.2025

G 11.24.2025

H 12.04.2025

Drawing Title

Sign Material, Paint,  
& Vinyl Information

Double-sided Monument Sign - Sign Type A



1 Existing Monument Sign  
SCALE: NTS

A 01



2 Existing Monument Sign  
SCALE: NTS

A 02



3 Existing Monument Sign  
SCALE: NTS

A 03



4 ST-A Monument Sign Refresh - Day Rendering  
SCALE: NTS



5 ST- A Monument Sign Refresh - Night Rendering  
SCALE: NTS

5



INTEGRATED SIGN & GRAPHIC, INC.  
5801 Kingpost Court  
Lexington, KY 40509  
Toll Free 800.755.7956  
Office 859.263.2800  
Online integratedsign.com

DESIGN INTENT DOCUMENT

© Copyright Integrated Sign & Graphic, Inc. This design/layout is an unpublished work of Integrated Sign & Graphic, Inc. which expressly reserves its common law rights pursuant to Title 17 Section 2 of the United States Code to prevent unauthorized copying. Publication or use of this design/layout, and to obtain damages thereon. This design/layout remains the property of Integrated Sign & Graphic, Inc. unless purchased by contractual sales agreement.

Property Owner  
**Simon Property Group**

Name of Project  
**Coconut Point Comprehensive Sign Package**

Project Address  
**23106 Fashion Drive  
Estero, FL 33928**

ISG Project Number  
**025072**

Drawn By <b>BD</b>	Quantity <b>1</b>
-----------------------	----------------------

Original Drawing Date  
**06.02.2025**

Issued Revisions

△ 06.25.2025    △ 01.14.2026

△ 07.08.2025

△ 07.25.2025

△ 09.30.2025

△ 11.12.2025

△ 11.24.2025

△ 12.04.2025

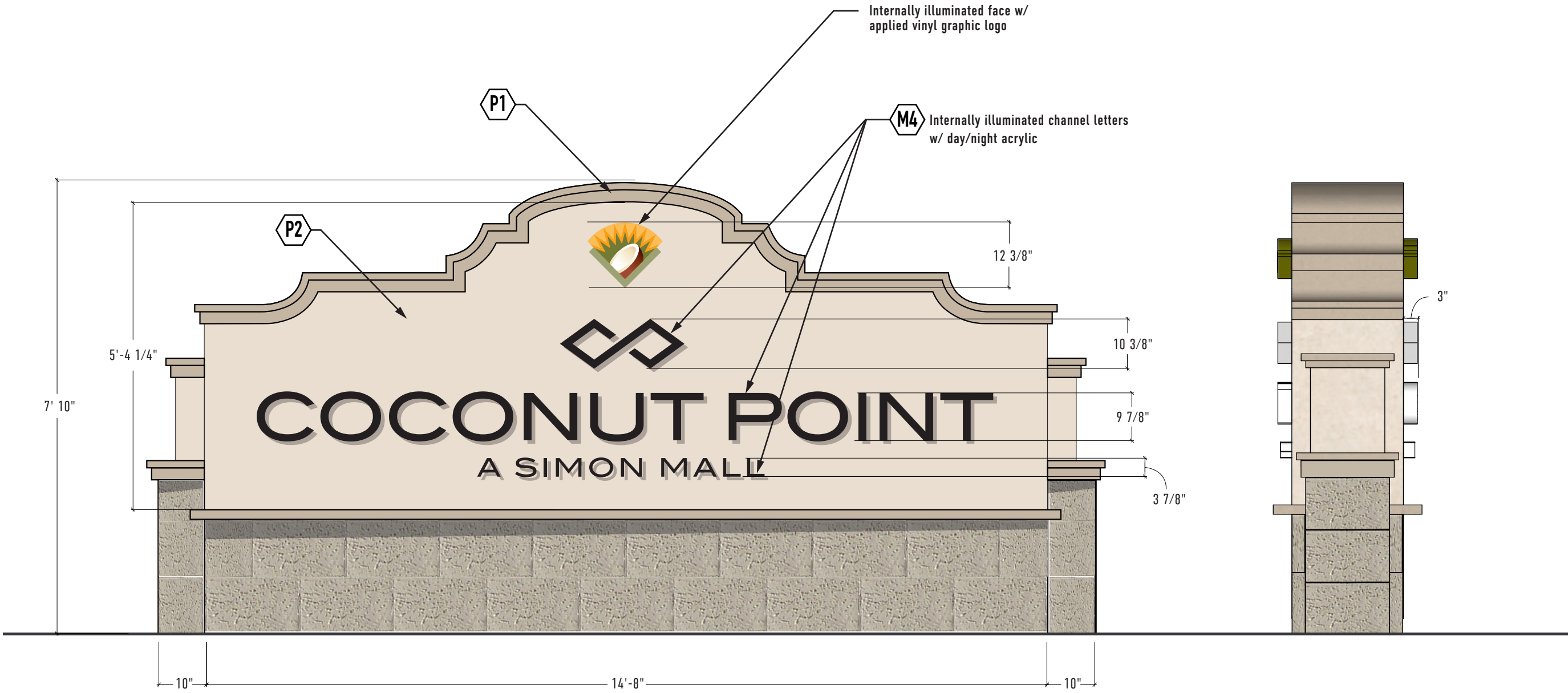
Drawing Title

**ST-A Double-sided Monument Day & Night Renderings**



Double-sided Monument Sign - Sign Type A

Sign Scope: Remove existing letters. Patch/paint existing faces.



1 Monument Sign - Front Elevation  
SCALE: NTS

2 Side View  
SCALE: NTS



INTEGRATED SIGN & GRAPHIC, INC.  
5801 Kingpost Court  
Lexington, KY 40509  
Toll Free 800.755.7956  
Office 859.263.2800  
Online integratedsign.com

DESIGN INTENT DOCUMENT

© Copyright Integrated Sign & Graphic, Inc. This design/layout is an unpublished work of Integrated Sign & Graphic, Inc. which expressly reserves its common law rights pursuant to Title 17 Section 2 of the United States Code to prevent unauthorized copying. Publication or use of this design/layout, and to obtain damages thereon. This design/layout remains the property of Integrated Sign & Graphic, Inc. unless purchased by contractual sales agreement.

Property Owner  
Simon Property Group

Name of Project  
Coconut Point Comprehensive Sign Package

Project Address  
23106 Fashion Drive  
Estero, FL 33928

ISG Project Number  
025072

Drawn By	Quantity
BD	1

Original Drawing Date  
06.02.2025

Issued Revisions

Δ 06.25.2025	Δ 01.14.2026
Δ 07.08.2025	
Δ 07.25.2025	
Δ 09.30.2025	
Δ 11.12.2025	
Δ 11.24.2025	
Δ 12.04.2025	

Drawing Title

ST-A Double-sided Monument Sign  
Front Elevation



Double-sided Pylon Sign - Sign Type B



1 Existing Pylon Sign  
SCALE: NTS

B 01



2 Pylon Sign Refresh - Day Rendering  
SCALE: NTS



2 Pylon Sign Refresh - Night Rendering  
SCALE: NTS



INTEGRATED SIGN & GRAPHIC, INC.  
5801 Kingpost Court  
Lexington, KY 40509  
Toll Free 800.755.7956  
Office 859.263.2800  
Online integratedsign.com

DESIGN INTENT DOCUMENT

© Copyright Integrated Sign & Graphic, Inc.  
This design/layout is an unpublished work of  
Integrated Sign & Graphic, Inc. which  
expressly reserves its common law rights  
pursuant to Title 17 Section 2 of the United  
States Code to prevent unauthorized copying.  
Publication or use of this design/layout, and to  
obtain damages thereon. This design/layout  
remains the property of Integrated Sign &  
Graphic, Inc. unless purchased by contractual  
sales agreement.

Property Owner  
Simon Property Group

Name of Project  
Coconut Point  
Comprehensive  
Sign Package

Project Address  
23106 Fashion Drive  
Estero, FL 33928

ISG Project Number  
025072

Drawn By BD	Quantity 1
----------------	---------------

Original Drawing Date  
06.02.2025

Issued Revisions  
A 06.25.2025 B 01.14.2026

C 07.08.2025

D 07.25.2025

E 09.30.2025

F 11.12.2025

G 11.24.2025

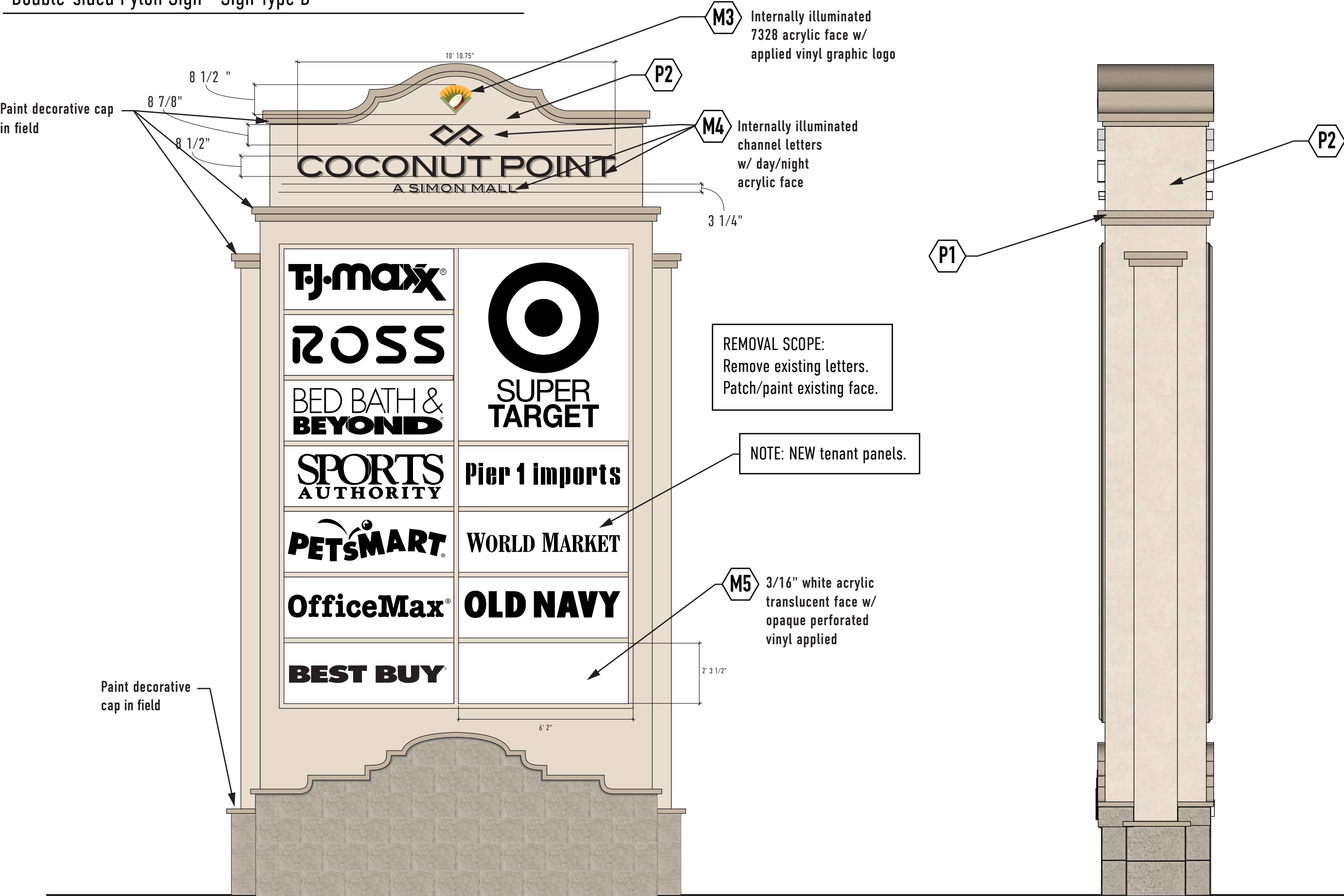
H 12.04.2025

Drawing Title

ST-B  
Pylon Sign Day &  
Night Renderings



Double-sided Pylon Sign - Sign Type B



1 Pylon Sign - Front Elevation  
SCALE: NTS

2 Side View  
SCALE: NTS



INTEGRATED SIGN & GRAPHIC, INC.  
5801 Kingpost Court  
Lexington, KY 40509  
Toll Free 800.755.7956  
Office 859.263.2800  
Online integratedsign.com

DESIGN INTENT DOCUMENT

© Copyright Integrated Sign & Graphic, Inc. This design/layout is an unpublished work of Integrated Sign & Graphic, Inc. which expressly reserves its common law rights pursuant to Title 17 Section 2 of the United States Code to prevent unauthorized copying. Publication or use of this design/layout, and to obtain damages thereon. This design/layout remains the property of Integrated Sign & Graphic, Inc. unless purchased by contractual sales agreement.

Property Owner  
Simon Property Group

Name of Project  
Coconut Point Comprehensive Sign Package

Project Address  
23106 Fashion Drive  
Estero, FL 33928

ISG Project Number  
025072

Drawn By	Quantity
BD	1

Original Drawing Date  
06.02.2025

Issued Revisions

△ 06.25.2025	△ 01.14.2026
△ 07.08.2025	
△ 07.25.2025	
△ 09.30.2025	
△ 11.12.2025	
△ 11.24.2025	
△ 12.04.2025	

Drawing Title

ST-B  
Pylon Sign  
Front Elevation



Main Entrance Tower Signs - Sign Type C



Sign Scope: Remove existing letters and logo on all 4 sides of large tower.  
Patch/paint wall surfaces. Install new letters/logos.  
Remove existing shell logo on 3 sides of small tower.  
Patch/paint wall surfaces. Install new shell logo.

NOTE to SIMON TEAM: No color change on towers until the city approves colors, so any paint work here would be matching existing colors.

1 Existing Entrance Tower Signs  
SCALE: NTS

C 01



2 Main Entrance Tower Signs - Day Rendering  
SCALE: NTS



INTEGRATED SIGN & GRAPHIC, INC.  
5801 Kingpost Court  
Lexington, KY 40509  
Toll Free 800.755.7956  
Office 859.263.2800  
Online integratedsign.com

DESIGN INTENT DOCUMENT

© Copyright Integrated Sign & Graphic, Inc. This design/layout is an unpublished work of Integrated Sign & Graphic, Inc. which expressly reserves its common law rights pursuant to Title 17 Section 2 of the United States Code to prevent unauthorized copying. Publication or use of this design/layout, and to obtain damages thereon. This design/layout remains the property of Integrated Sign & Graphic, Inc. unless purchased by contractual sales agreement.

Property Owner  
Simon Property Group

Name of Project  
Coconut Point  
Comprehensive  
Sign Package

Project Address  
23106 Fashion Drive  
Estero, FL 33928

ISG Project Number  
025072

Drawn By BD	Quantity 1
----------------	---------------

Original Drawing Date  
06.02.2025

Issued Revisions  
A 06.25.2025 B 01.14.2026

C 07.08.2025

D 07.25.2025

E 09.30.2025

F 11.12.2025

G 11.24.2025

H 12.04.2025

Drawing Title  
ST-C  
Main Entrance  
Tower Elevations  
Day Rendering



Main Entrance Tower Signs - Sign Type C



1 Existing Entrance Tower Signs  
SCALE: NTS

C 01



2 Main Entrance Tower Signs - Night Rendering  
SCALE: NTS



INTEGRATED SIGN & GRAPHIC, INC.  
5801 Kingpost Court  
Lexington, KY 40509  
Toll Free 800.755.7956  
Office 859.263.2800  
Online integratedsign.com

DESIGN INTENT DOCUMENT

© Copyright Integrated Sign & Graphic, Inc. This design/layout is an unpublished work of Integrated Sign & Graphic, Inc. which expressly reserves its common law rights pursuant to Title 17 Section 2 of the United States Code to prevent unauthorized copying. Publication or use of this design/layout, and to obtain damages thereon. This design/layout remains the property of Integrated Sign & Graphic, Inc. unless purchased by contractual sales agreement.

Property Owner  
Simon Property Group

Name of Project  
Coconut Point  
Comprehensive  
Sign Package

Project Address  
23106 Fashion Drive  
Estero, FL 33928

ISG Project Number  
025072

Drawn By BD	Quantity 1
----------------	---------------

Original Drawing Date  
06.02.2025

Issued Revisions  
A 06.25.2025 B 01.14.2026

C 07.08.2025

D 07.25.2025

E 09.30.2025

F 11.12.2025

G 11.24.2025

H 12.04.2025

Drawing Title  
ST-C  
Main Entrance  
Tower Elevations  
Night Rendering



Main Entrance Tower Signs - Sign Type C

Sign Scope: Remove existing letters and logo.  
Patch/paint wall surface.  
Install new letters/logo.

Closeup Front Elevation  
w/ measurements on page 15

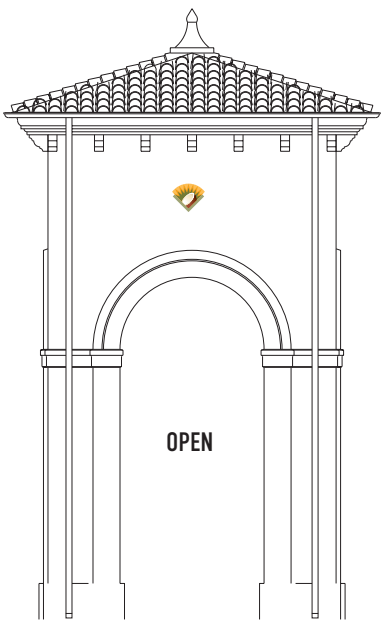


Elevation "A" - North Elevation  
Scale : 3/32"=1'-0"

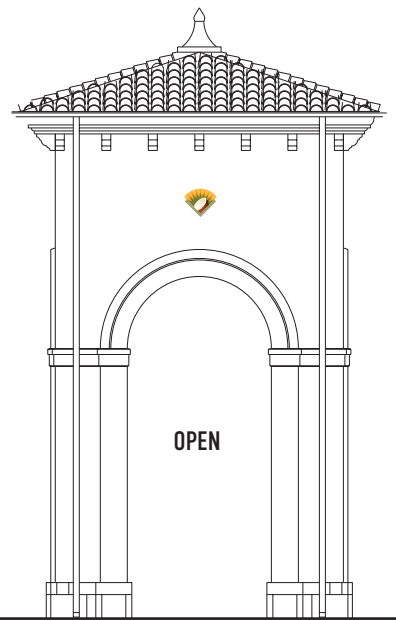
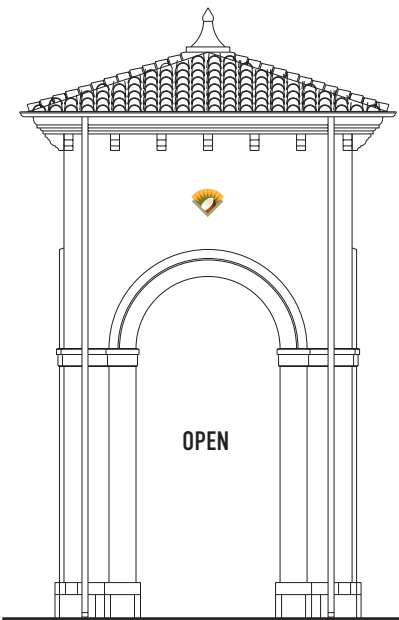
East Elevation  
Scale : 3/32"=1'-0"



Elevation "B" - South Elevation  
Scale : 3/32"=1'-0"



East Elevation  
Scale : 3/32"=1'-0"



INTEGRATED SIGN & GRAPHIC, INC.  
5801 Kingpost Court  
Lexington, KY 40509  
Toll Free 800.755.7956  
Office 859.263.2800  
Online integratedsign.com

DESIGN INTENT DOCUMENT

© Copyright Integrated Sign & Graphic, Inc.  
This design/layout is an unpublished work of  
Integrated Sign & Graphic, Inc. which  
expressly reserves its common law rights  
pursuant to Title 17 Section 2 of the United  
States Code to prevent unauthorized copying.  
Publication or use of this design/layout, and to  
obtain damages thereon. This design/layout  
remains the property of Integrated Sign &  
Graphic, Inc. unless purchased by contractual  
sales agreement.

Property Owner  
**Simon Property Group**

Name of Project  
**Coconut Point  
Comprehensive  
Sign Package**

Project Address  
**23106 Fashion Drive  
Estero, FL 33928**

ISG Project Number  
**025072**

Drawn By	Quantity
BD	1

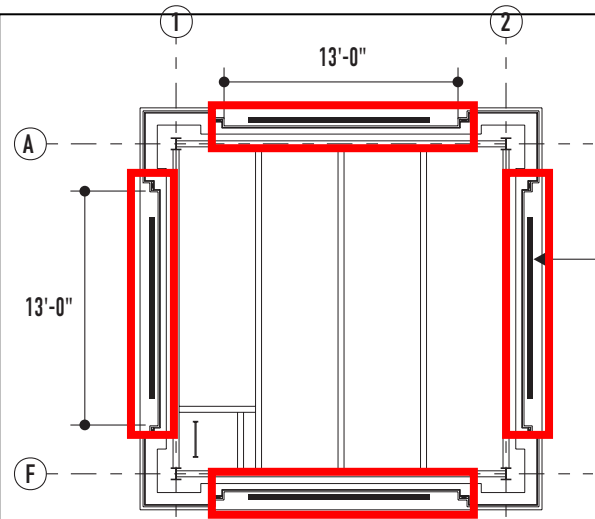
Original Drawing Date  
**06.02.2025**

Issued Revisions

△ 06.25.2025	△ 01.14.2026
△ 07.08.2025	
△ 07.25.2025	
△ 09.30.2025	
△ 11.12.2025	
△ 11.24.2025	
△ 12.04.2025	

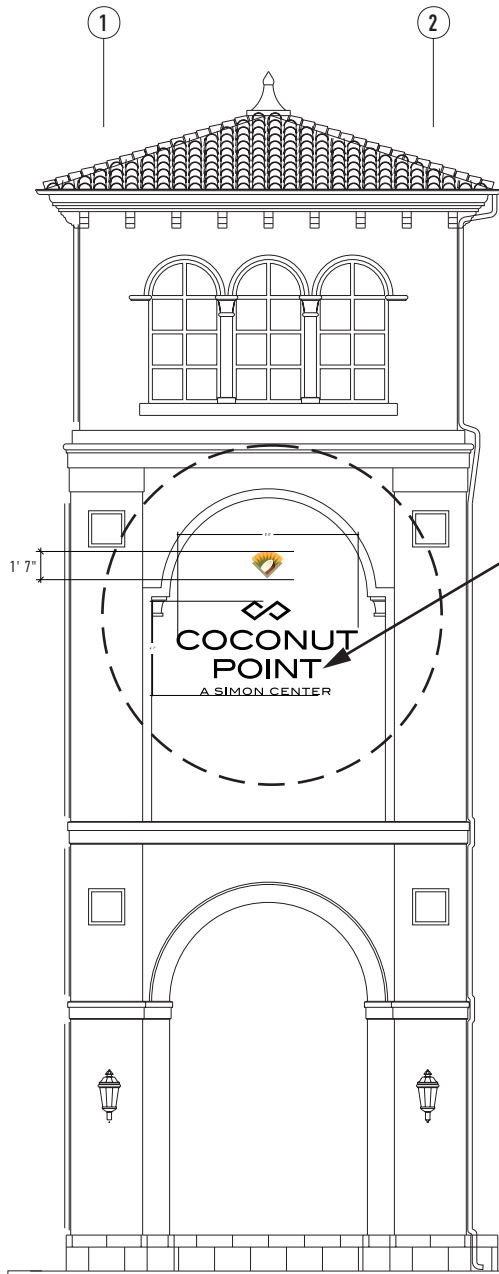
Drawing Title  
**ST-C  
Main Entrance  
Tower Elevations**

J:\Drawing Library\Coconut Point\2025\Job Scope\Design Intent



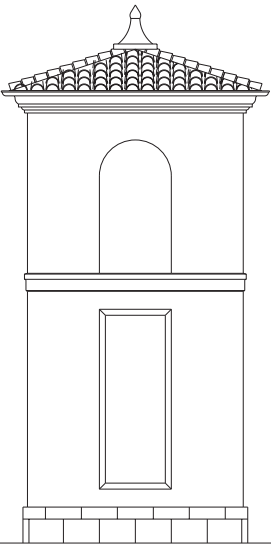
Plan View - North Tower  
Scale : 3/32"=1'-0"

Channel letters & logo  
(4 sides)

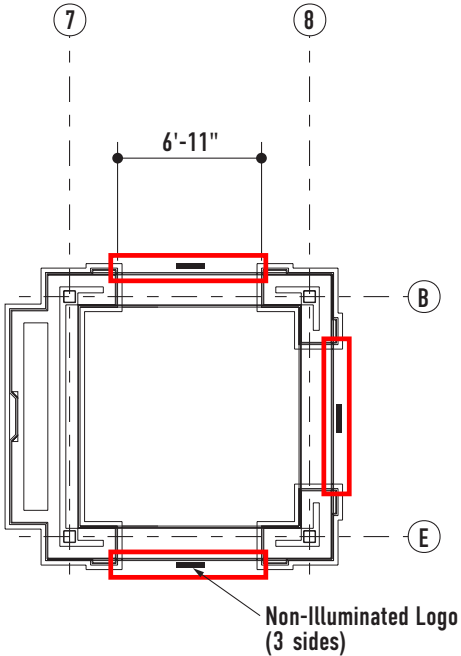


North Tower  
West Elevation

Closeup Front Elevation  
w/ measurements on page 15



West Elevation  
Scale : 3/32"=1'-0"



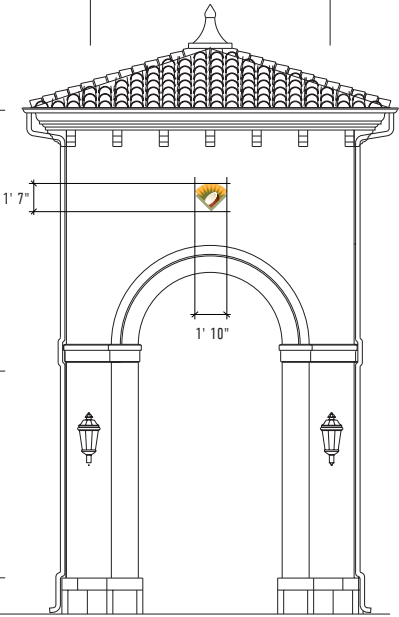
Plan View - South Tower  
Scale : 3/32"=1'-0"

Non-Illuminated Logo  
(3 sides)

T / STUD  
ELE V. 128'-0"

B / ARCH  
ELE V. 113'-6"

T / BASE  
ELE V. 102'-0"



South Tower  
West Elevation



INTEGRATED SIGN & GRAPHIC, INC.  
5801 Kingpost Court  
Lexington, KY 40509  
Toll Free 800.755.7956  
Office 859.263.2800  
Online integratedsign.com

DESIGN INTENT DOCUMENT

© Copyright Integrated Sign & Graphic, Inc.  
This design/layout is an unpublished work of  
Integrated Sign & Graphic, Inc. which  
expressly reserves its common law rights  
pursuant to Title 17 Section 2 of the United  
States Code to prevent unauthorized copying.  
Publication or use of this design/layout, and to  
obtain damages thereon. This design/layout  
remains the property of Integrated Sign &  
Graphic, Inc. unless purchased by contractual  
sales agreement.

Property Owner  
**Simon Property Group**

Name of Project  
**Coconut Point  
Comprehensive  
Sign Package**

Project Address  
**23106 Fashion Drive  
Estero, FL 33928**

ISG Project Number  
**025072**

Drawn By	Quantity
BD	1

Original Drawing Date  
**06.02.2025**

Issued Revisions

△ 06.25.2025    8 01.14.2026

△ 07.08.2025

△ 07.25.2025

△ 09.30.2025

△ 11.12.2025

△ 11.24.2025

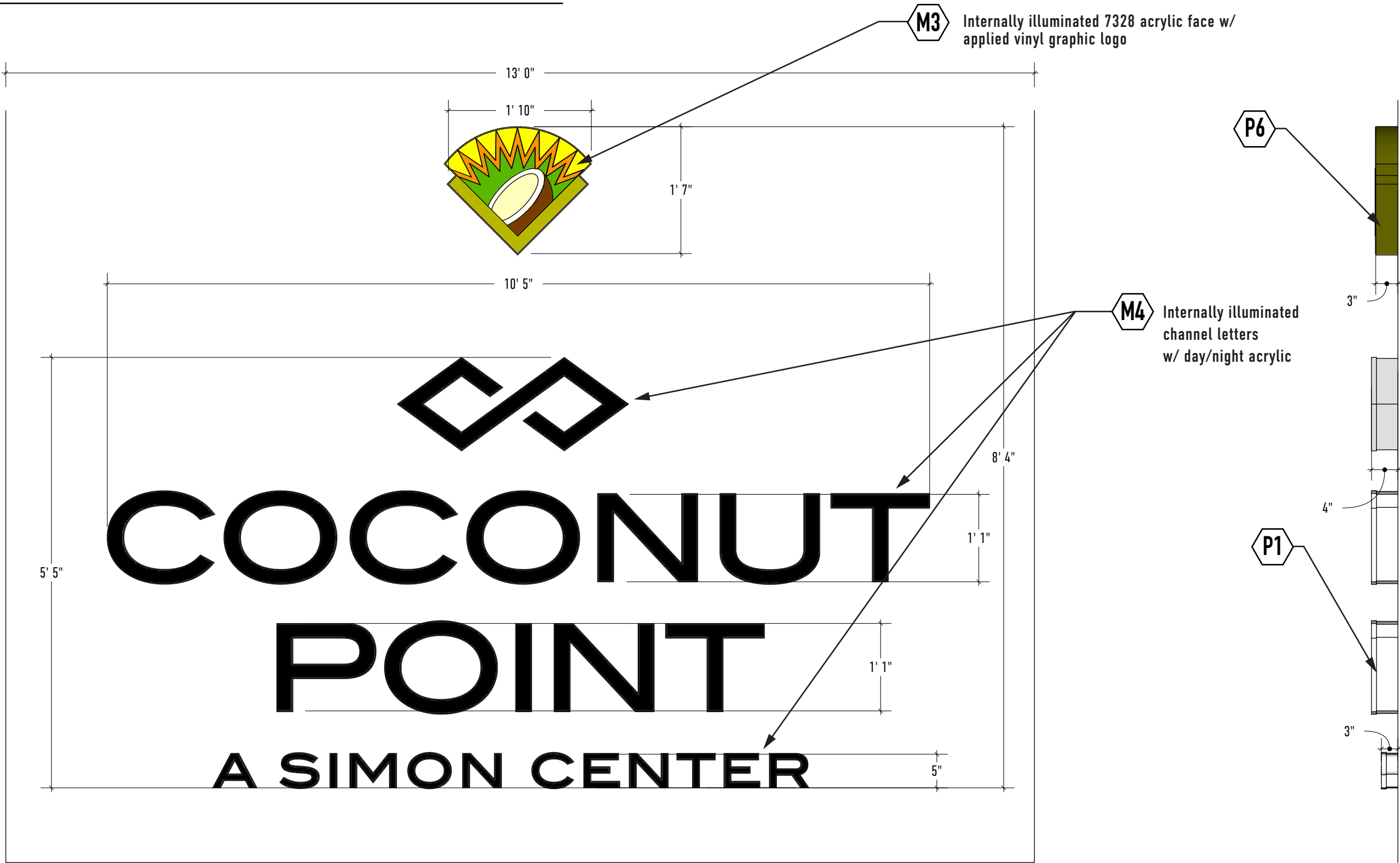
△ 12.04.2025

Drawing Title

**ST-C  
Main Entrance  
Tower Elevations**



Main Entrance Tower Signs - Sign Type C



01 North Tower Sign - Front Elevation  
Scale: 3/4" = 1'-0"

02 Side View  
Scale: 3/4" = 1'-0"

C 01



INTEGRATED SIGN & GRAPHIC, INC.  
5801 Kingpost Court  
Lexington, KY 40509  
Toll Free 800.755.7956  
Office 859.263.2800  
Online integratedsign.com

DESIGN INTENT DOCUMENT

© Copyright Integrated Sign & Graphic, Inc. This design/layout is an unpublished work of Integrated Sign & Graphic, Inc. which expressly reserves its common law rights pursuant to Title 17 Section 2 of the United States Code to prevent unauthorized copying. Publication or use of this design/layout, and to obtain damages thereon. This design/layout remains the property of Integrated Sign & Graphic, Inc. unless purchased by contractual sales agreement.

Property Owner  
Simon Property Group

Name of Project  
Coconut Point Comprehensive Sign Package

Project Address  
23106 Fashion Drive  
Estero, FL 33928

ISG Project Number  
025072

Drawn By	Quantity
BD	1

Original Drawing Date  
06.02.2025

Issued Revisions

△ 06.25.2025 △ 01.14.2026

△ 07.08.2025

△ 07.25.2025

△ 09.30.2025

△ 11.12.2025

△ 11.24.2025

△ 12.04.2025

Drawing Title

ST-C Logo & Channel Letters  
Front Elevation

Wayfinding Sign - Sign Type E



1 Existing Wayfinding Sign

SCALE: NTS

E 01



2 Wayfinding Sign Refresh - Rendering

SCALE: NTS



INTEGRATED SIGN & GRAPHIC, INC.  
5801 Kingpost Court  
Lexington, KY 40509  
Toll Free 800.755.7956  
Office 859.263.2800  
Online [integratedsign.com](http://integratedsign.com)

DESIGN INTENT DOCUMENT

© Copyright Integrated Sign & Graphic, Inc. This design/layout is an unpublished work of Integrated Sign & Graphic, Inc. which expressly reserves its common law rights pursuant to Title 17 Section 2 of the United States Code to prevent unauthorized copying. Publication or use of this design/layout, and to obtain damages thereon. This design/layout remains the property of Integrated Sign & Graphic, Inc. unless purchased by contractual sales agreement.

Property Owner  
**Simon Property Group**

Name of Project  
**Coconut Point Comprehensive Sign Package**

Project Address  
**23106 Fashion Drive  
Estero, FL 33928**

ISG Project Number  
**025072**

Drawn By <b>BD</b>	Quantity <b>1</b>
-----------------------	----------------------

Original Drawing Date  
**06.02.2025**

Issued Revisions

△ 06.25.2025    △ 01.14.2026

△ 07.08.2025

△ 07.25.2025

△ 09.30.2025

△ 11.12.2025

△ 11.24.2025

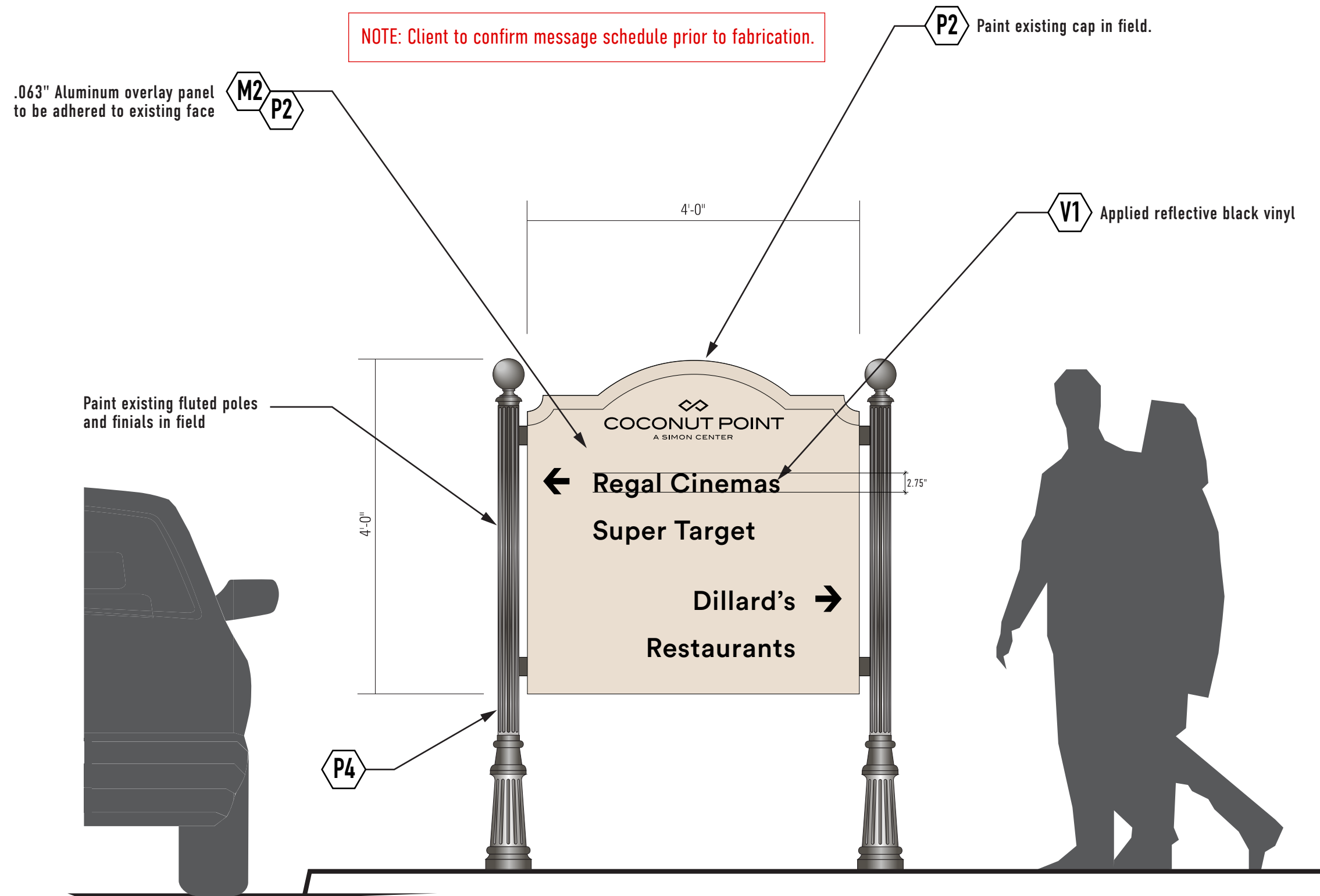
△ 12.04.2025

Drawing Title

**ST-E  
Wayfinding Sign  
Rendering**



J:\Drawing Library\C\Coconut Point\2025 Job Scope\Design Intent



1 Wayfinding Sign Refresh - Front Elevation  
SCALE: NTS



INTEGRATED SIGN & GRAPHIC, INC.  
5801 Kingpost Court  
Lexington, KY 40509  
Toll Free 800.755.7956  
Office 859.263.2800  
Online integratedsign.com

#### DESIGN INTENT DOCUMENT

© Copyright Integrated Sign & Graphic, Inc. This design/layout is an unpublished work of Integrated Sign & Graphic, Inc. which expressly reserves its common law rights pursuant to Title 17 Section 2 of the United States Code to prevent unauthorized copying. Publication or use of this design/layout, and to obtain damages thereon. This design/layout remains the property of Integrated Sign & Graphic, Inc. unless purchased by contractual sales agreement.

Property Owner

Simon Property Group

Name of Project

Coconut Point  
Comprehensive  
Sign Package

Project Address

23106 Fashion Drive  
Estero, FL 33928

ISG Project Number

025072

Drawn By

BD

Quantity

1

Original Drawing Date

06.02.2025

Issued Revisions

⚠ 06.25.2025 ⚠ 01.14.2026

⚠ 07.08.2025

⚠ 07.25.2025

⚠ 09.30.2025

⚠ 11.12.2025

⚠ 11.24.2025

⚠ 12.04.2025

Drawing Title

ST-E  
Wayfinding Sign  
Elevations

Tenant Monument - Sign Type F



1 Tenant Monument Sign Concept - Day Rendering  
SCALE: NTS  
F .1

2 Tenant Monument Sign Concept - Night Rendering  
SCALE: NTS



INTEGRATED SIGN & GRAPHIC, INC.  
5801 Kingpost Court  
Lexington, KY 40509  
Toll Free 800.755.7956  
Office 859.263.2800  
Online integratedsign.com

DESIGN INTENT DOCUMENT

© Copyright Integrated Sign & Graphic, Inc. This design/layout is an unpublished work of Integrated Sign & Graphic, Inc. which expressly reserves its common law rights pursuant to Title 17 Section 2 of the United States Code to prevent unauthorized copying. Publication or use of this design/layout, and to obtain damages thereon. This design/layout remains the property of Integrated Sign & Graphic, Inc. unless purchased by contractual sales agreement.

Property Owner  
Simon Property Group

Name of Project  
Coconut Point  
Comprehensive  
Sign Package

Project Address  
23106 Fashion Drive  
Estero, FL 33928

ISG Project Number  
025072

Drawn By BD	Quantity 1
----------------	---------------

Original Drawing Date  
06.02.2025

Issued Revisions  
A 06.25.2025 B 01.14.2026

C 07.08.2025

D 07.25.2025

E 09.30.2025

F 11.12.2025

G 11.24.2025

H 12.04.2025

Drawing Title  
ST-F.1  
Tenant Monument  
Renderings





1 Tenant Monument Sign Concept - Day Rendering

SCALE: NTS

F .2

2 Tenant Monument Sign Concept - Night Rendering

SCALE: NTS



INTEGRATED SIGN & GRAPHIC, INC.  
5801 Kingpost Court  
Lexington, KY 40509  
Toll Free 800.755.7956  
Office 859.263.2800  
Online integratedsign.com

DESIGN INTENT DOCUMENT

© Copyright Integrated Sign & Graphic, Inc. This design/layout is an unpublished work of Integrated Sign & Graphic, Inc. which expressly reserves its common law rights pursuant to Title 17 Section 2 of the United States Code to prevent unauthorized copying. Publication or use of this design/layout, and to obtain damages thereon. This design/layout remains the property of Integrated Sign & Graphic, Inc. unless purchased by contractual sales agreement.

Property Owner

Simon Property Group

Name of Project

Coconut Point  
Comprehensive  
Sign Package

Project Address

23106 Fashion Drive  
Estero, FL 33928

ISG Project Number

025072

Drawn By

BD

Quantity

1

Original Drawing Date

06.02.2025

Issued Revisions

△ 06.25.2025 △ 01.14.2026

△ 07.08.2025

△ 07.25.2025

△ 09.30.2025

△ 11.12.2025

△ 11.24.2025

△ 12.04.2025

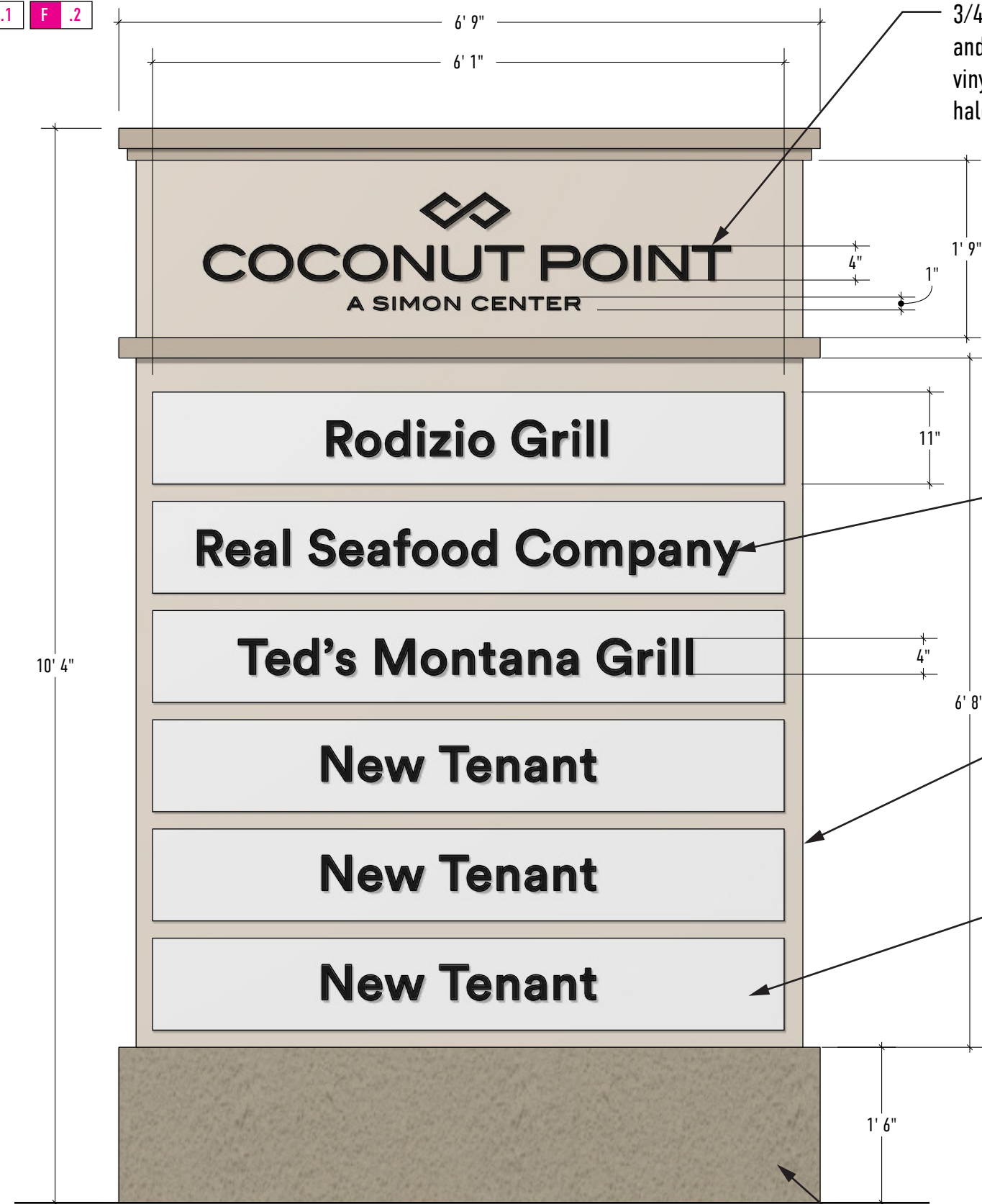
Drawing Title

ST-F.2  
Tenant Monument  
Renderings



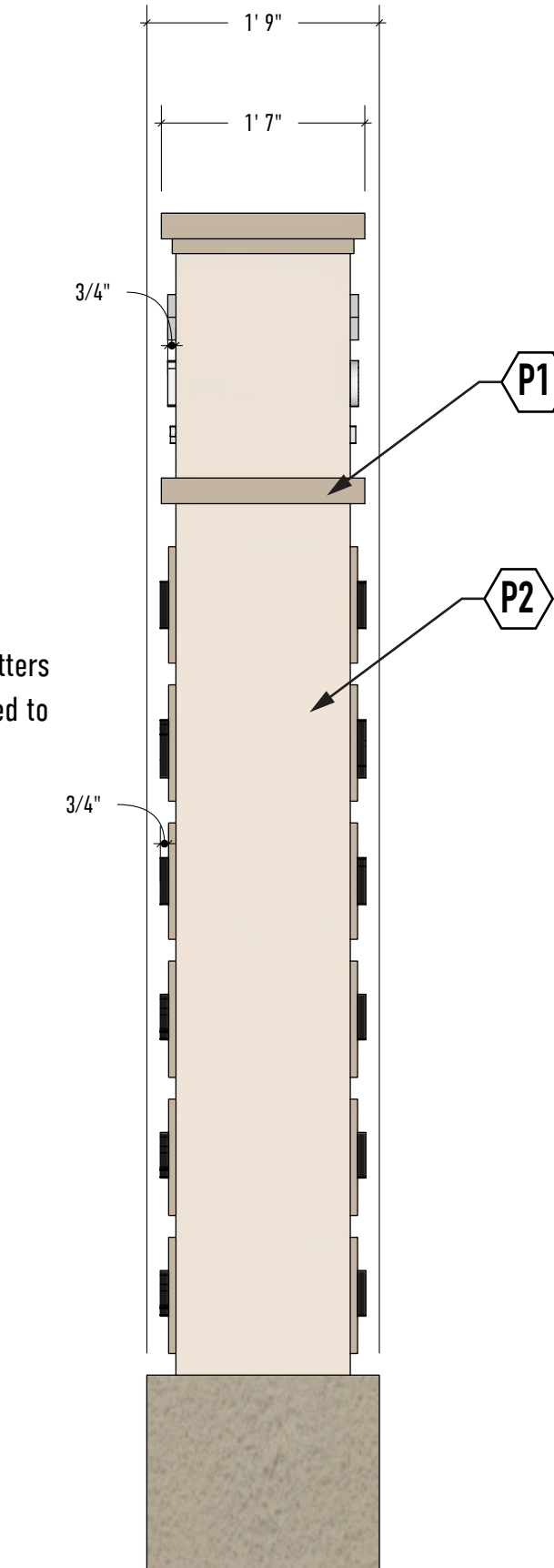
**F** **.1**   **F** **.2**

- 3/4" White acrylic push-thru letters  
and logo w/ opaque applied  
vinyl to face of letters for  
halo lighting



Scale:  $\frac{3}{4}" = 1'-0"$

Textured aluminum base



Scale:  $\frac{3}{4}" = 1'-0"$



## DESIGN INTENT DOCUMENT

Property Owner

Name of Project

Project Address

ISG Project Number

025072

Quantity
1

Original Drawing Date

06.02.2025

### Issued Revisions

1 06.25.2025 8 01.14.2026

**2 07.08.2025**

3 07.25.2025

**4 09.30.2025**

11.12.2025

△ 11.24.2025

7 12.04.2025

Drawing Title

## ST-F.1 & ST-F.2 Tenant Monument Elevations



1 Existing Street Sign  
SCALE: NTS

G 01



2 Street Sign Refresh - Rendering  
SCALE: NTS



INTEGRATED SIGN & GRAPHIC, INC.  
5801 Kingpost Court  
Lexington, KY 40509  
Toll Free 800.755.7956  
Office 859.263.2800  
Online integratedsign.com

DESIGN INTENT DOCUMENT

© Copyright Integrated Sign & Graphic, Inc. This design/layout is an unpublished work of Integrated Sign & Graphic, Inc. which expressly reserves its common law rights pursuant to Title 17 Section 2 of the United States Code to prevent unauthorized copying. Publication or use of this design/layout, and to obtain damages thereon. This design/layout remains the property of Integrated Sign & Graphic, Inc. unless purchased by contractual sales agreement.

Property Owner  
Simon Property Group

Name of Project  
Coconut Point  
Comprehensive  
Sign Package

Project Address  
23106 Fashion Drive  
Estero, FL 33928

ISG Project Number  
025072

Drawn By BD	Quantity 1
----------------	---------------

Original Drawing Date  
06.02.2025

Issued Revisions

△ 06.25.2025 △ 01.14.2026

△ 07.08.2025

△ 07.25.2025

△ 09.30.2025

△ 11.12.2025

△ 11.24.2025

△ 12.04.2025

Drawing Title

ST-G  
Street Sign  
Rendering



Street Signs - Sign Type G

.063" Aluminum overlay panel  
adhered to existing

M2  
P2

V1  
Applied reflective black vinyl

3'-7"

8 7/8"

2.70"

Mediterranean Dr.

P4

3 Street Sign - Front Elevation  
SCALE: 1" = 1'-0"

Mediterranean Dr.

Mediterranean Dr.

P4

Vertical pole

Street signage

4 Street Sign - Plan View  
SCALE: NTS

1 Light Pole Sign - Front Elevation  
SCALE: 1/2" = 1'-0"

2 Standard Pole Sign - Front Elevation  
SCALE: 1/2" = 1'-0"

NOTE: Client to confirm street names and quantities prior to production.



INTEGRATED SIGN & GRAPHIC, INC.  
5801 Kingpost Court  
Lexington, KY 40509  
Toll Free 800.755.7956  
Office 859.263.2800  
Online integratedsign.com

DESIGN INTENT DOCUMENT

© Copyright Integrated Sign & Graphic, Inc.  
This design/layout is an unpublished work of  
Integrated Sign & Graphic, Inc. which  
expressly reserves its common law rights  
pursuant to Title 17 Section 2 of the United  
States Code to prevent unauthorized copying.  
Publication or use of this design/layout, and to  
obtain damages thereon. This design/layout  
remains the property of Integrated Sign &  
Graphic, Inc. unless purchased by contractual  
sales agreement.

Property Owner

Simon Property Group

Name of Project

Coconut Point  
Comprehensive  
Sign Package

Project Address

23106 Fashion Drive  
Estero, FL 33928

ISG Project Number

025072

Drawn By

BD

Quantity

1

Original Drawing Date

06.02.2025

Issued Revisions

△ 06.25.2025 △ 01.14.2026

△ 07.08.2025

△ 07.25.2025

△ 09.30.2025

△ 11.12.2025

△ 11.24.2025

△ 12.04.2025

Drawing Title

ST-G  
Street Sign  
Elevations

Street Signs - Sign Type G

NOTE: Client to confirm street names and quantities prior to production.

Mediterranean Dr.

Quantity 7

Fashion Dr.

Quantity 6

Village Shops Way

Quantity 5

Via Venezia St.

Quantity 2

Amgci Way

Quantity 1

Via Villagio

Quantity 7

Palma De Coco Dr.

Quantity 1

Via Monte Carlo Way

Quantity 2

Shopkeepers Way

Quantity 1

Plaza Del Lago Dr.

Quantity 5

Via Sardinia St.

Quantity 4

Cinema Way

Quantity 2

3 Street Sign - Message Schedule  
SCALE: NTS



INTEGRATED SIGN & GRAPHIC, INC.  
5801 Kingpost Court  
Lexington, KY 40509  
Toll Free 800.755.7956  
Office 859.263.2800  
Online integratedsign.com

DESIGN INTENT DOCUMENT

© Copyright Integrated Sign & Graphic, Inc. This design/layout is an unpublished work of Integrated Sign & Graphic, Inc. which expressly reserves its common law rights pursuant to Title 17 Section 2 of the United States Code to prevent unauthorized copying. Publication or use of this design/layout, and to obtain damages thereon. This design/layout remains the property of Integrated Sign & Graphic, Inc. unless purchased by contractual sales agreement.

Property Owner  
Simon Property Group

Name of Project  
Coconut Point  
Comprehensive  
Sign Package

Project Address  
23106 Fashion Drive  
Estero, FL 33928

ISG Project Number  
025072

Drawn By BD	Quantity 1
----------------	---------------

Original Drawing Date  
06.02.2025

Issued Revisions

1	06.25.2025	8	01.14.2026
---	------------	---	------------

2	07.08.2025
---	------------

3	07.25.2025
---	------------

4	09.30.2025
---	------------

5	11.12.2025
---	------------

6	11.24.2025
---	------------

7	12.04.2025
---	------------

Drawing Title

ST-G  
Street Sign  
Schedule

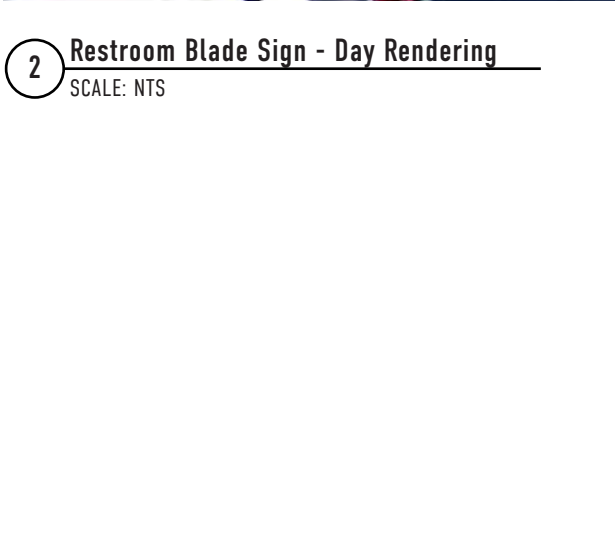


Double-sided Internally Illuminated Restroom Blade Sign - Sign Type J

J 01



Aluminum blade sign with .125" aluminum panel, 3" x 3" aluminum tube frame



1 Double-sided Restroom Blade Sign - Front Elevation  
SCALE: 1 1/2" = 1'-0"

2 Restroom Blade Sign - Day Rendering  
SCALE: NTS

3 Restroom Blade Sign - Night Rendering  
SCALE: NTS



INTEGRATED SIGN & GRAPHIC, INC.  
5801 Kingpost Court  
Lexington, KY 40509  
Toll Free 800.755.7956  
Office 859.263.2800  
Online integratedsign.com

DESIGN INTENT DOCUMENT

© Copyright Integrated Sign & Graphic, Inc. This design/layout is an unpublished work of Integrated Sign & Graphic, Inc. which expressly reserves its common law rights pursuant to Title 17 Section 2 of the United States Code to prevent unauthorized copying. Publication or use of this design/layout, and to obtain damages thereon. This design/layout remains the property of Integrated Sign & Graphic, Inc. unless purchased by contractual sales agreement.

Property Owner  
Simon Property Group

Name of Project  
Coconut Point Comprehensive Sign Package

Project Address  
23106 Fashion Drive  
Estero, FL 33928

ISG Project Number  
025072

Drawn By	Quantity
BD	1

Original Drawing Date  
06.02.2025

Issued Revisions

△ 06.25.2025 △ 01.14.2026

△ 07.08.2025

△ 07.25.2025

△ 09.30.2025

△ 11.12.2025

△ 11.24.2025

△ 12.04.2025

Drawing Title

ST-J  
Restroom Blade Sign  
Rendering

Children’s Play Area Dimensional Letters - Sign Type K

Scope: Remove existing letters. Patch/paint as needed.



1 Existing Children’s Play Area Sign  
SCALE: NTS

K01



2 Children’s Play Area Dimensional Letters - Rendering  
SCALE: NTS



INTEGRATED SIGN & GRAPHIC, INC.  
5801 Kingpost Court  
Lexington, KY 40509  
Toll Free 800.755.7956  
Office 859.263.2800  
Online integratedsign.com

DESIGN INTENT DOCUMENT

© Copyright Integrated Sign & Graphic, Inc. This design/layout is an unpublished work of Integrated Sign & Graphic, Inc. which expressly reserves its common law rights pursuant to Title 17 Section 2 of the United States Code to prevent unauthorized copying. Publication or use of this design/layout, and to obtain damages thereon. This design/layout remains the property of Integrated Sign & Graphic, Inc. unless purchased by contractual sales agreement.

Property Owner  
Simon Property Group

Name of Project  
Coconut Point  
Comprehensive  
Sign Package

Project Address  
23106 Fashion Drive  
Estero, FL 33928

ISG Project Number  
025072

Drawn By BD	Quantity 1
----------------	---------------

Original Drawing Date  
06.02.2025

Issued Revisions  
1 06.25.2025 2 01.14.2026

3 07.08.2025

4 07.25.2025

5 09.30.2025

6 11.12.2025

7 11.24.2025

8 12.04.2025

Drawing Title  
ST-K  
Children’s Play Area  
Dimensional Letters  
Rendering