



*Village of Estero Council Presentation
Broadway Avenue W Concept Phase
Safety and Drainage Improvements
March 18, 2026*

Broadway W

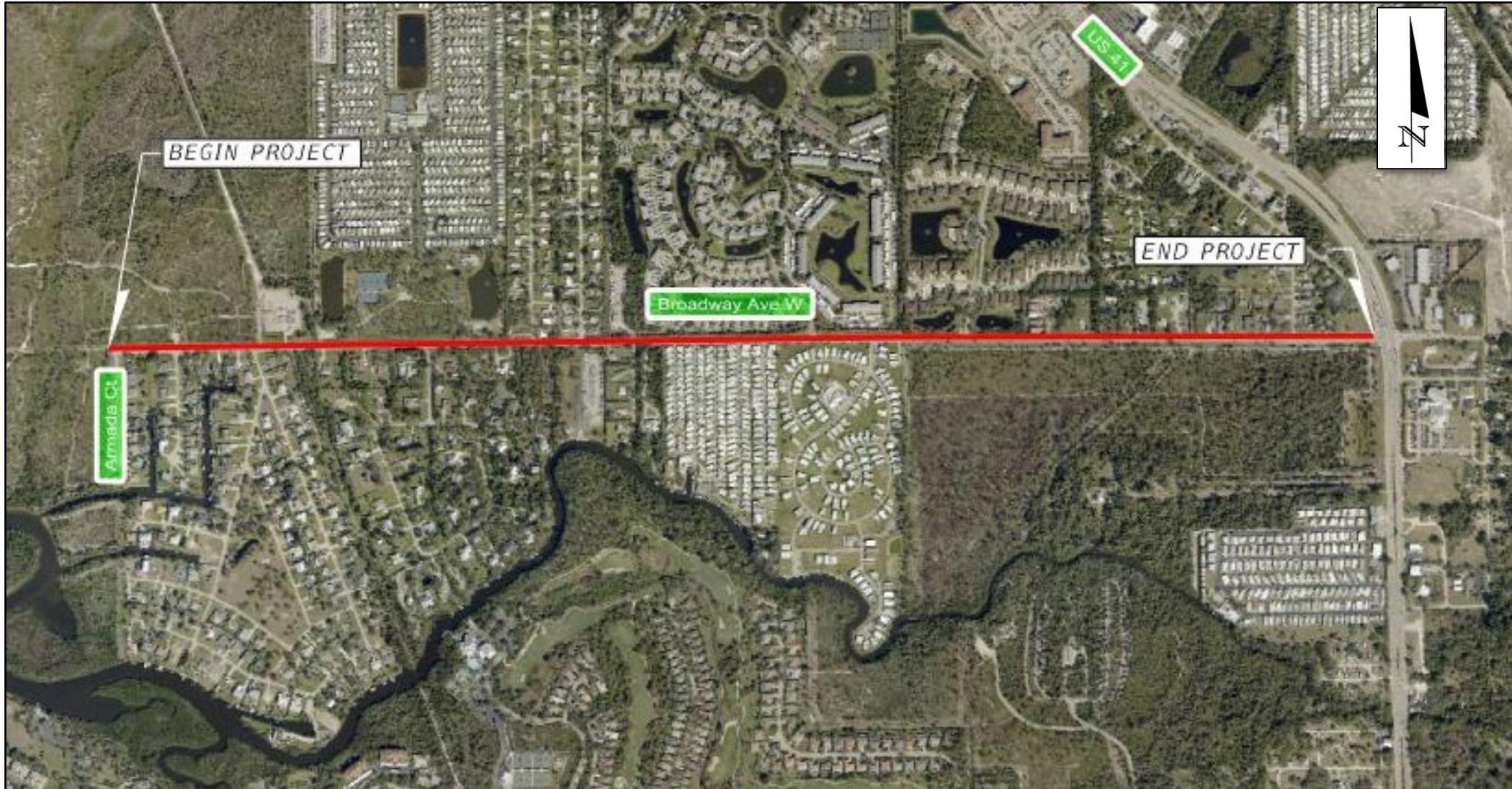
NO OUTLET



MEETING AGENDA

- Project Scope
- Existing Conditions
- Analysis
- Design Alternatives
- Construction Cost Estimates
- Public Involvement
- Recommendations
- Project schedule
- Questions?

PROJECT LIMITS



- Safety
 - Address Roadside Hazards
- Drainage Improvements
- Pedestrian Improvements
 - Sidewalks on Both Sides Desired
 - Potential Lighting
- Landscape Improvements

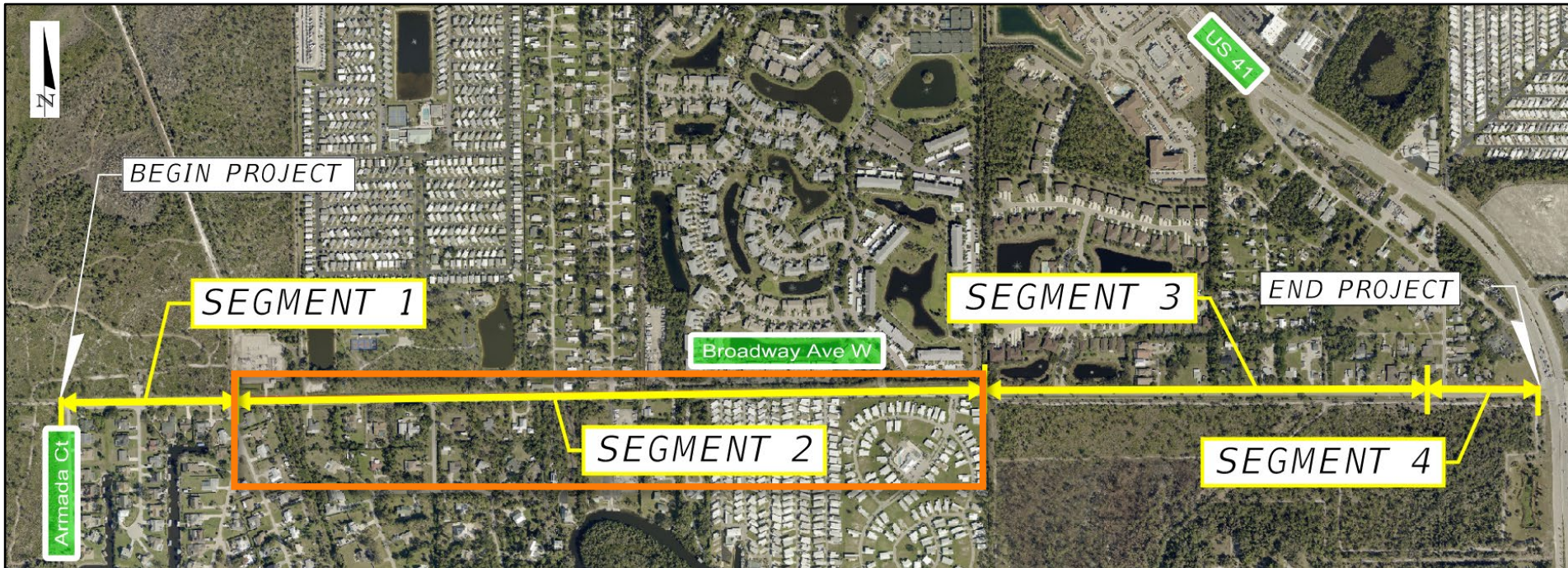


Feature	Broadway Ave W
Functional Classification	Major Collector
Existing Posted Speed (mph)	25 (Armada Ct. to Pine Tree Ln. / 35 (Pine Tree Ln. to US 41)
Roadway Section	2-Lane Rural Undivided (9'-10' lanes)

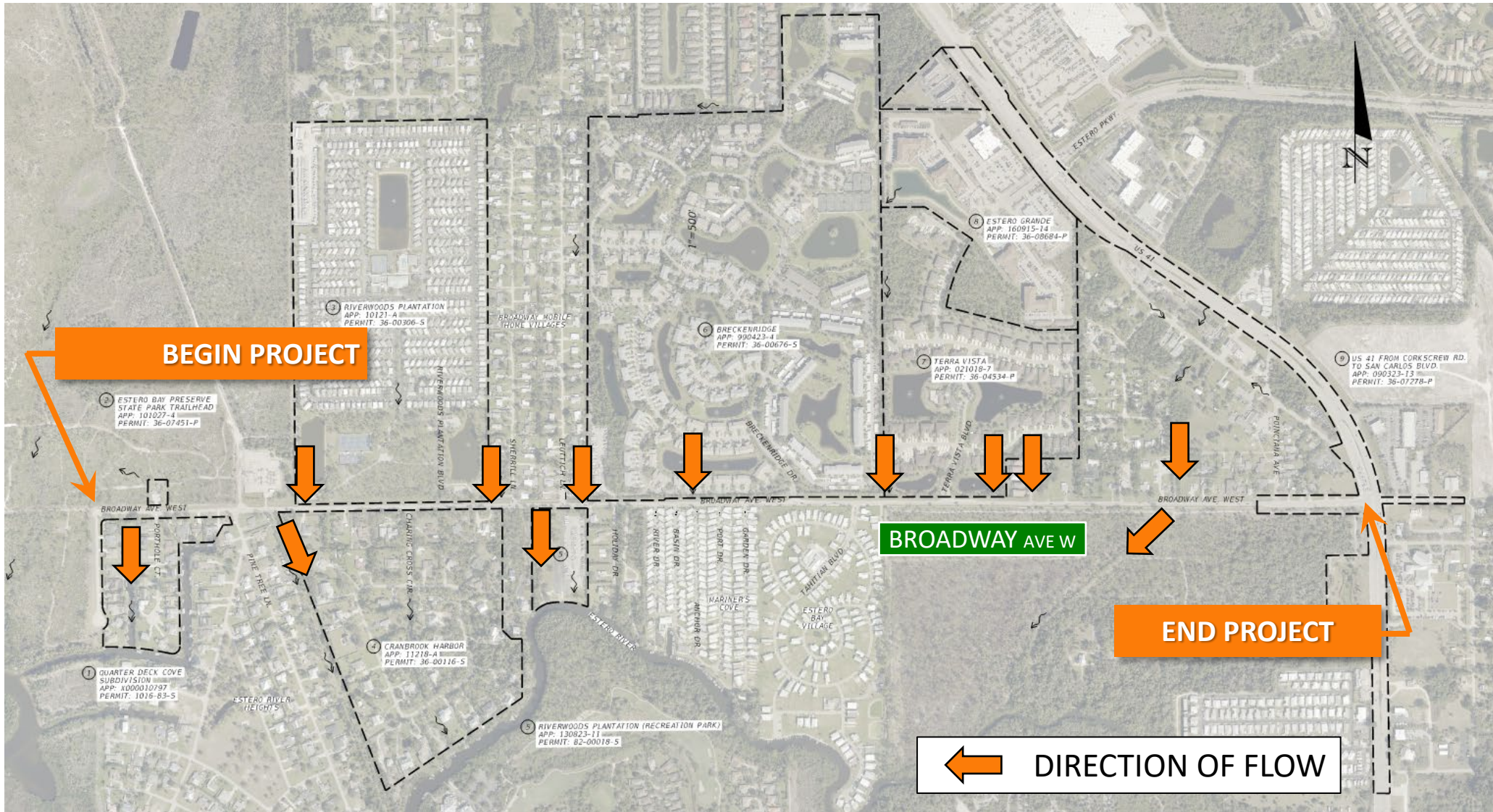


EXISTING CONDITIONS

Seg. No	From	To	Distance (ft)	R/W Width (ft)
1	Armada Ct.	Pine Tree Ln.	±982	±65 - 89
2	Pine Tree Ln.	±190 ft east of Tahitian	±4,361	±50 - 70
3	±190 ft east of Tahitian	±110 ft west of Poinciana Ave.	±2,540	±68 - 89
4	±110 ft west of Poinciana Ave.	US 41	±663	±89 - 91

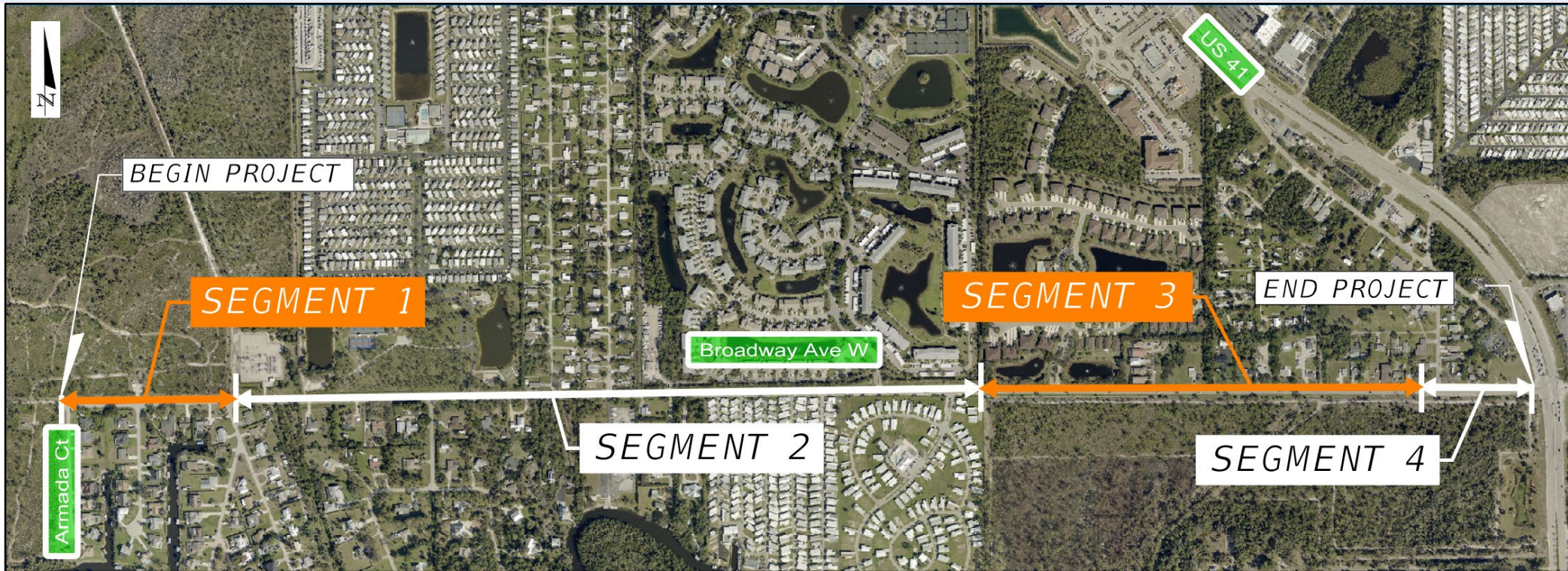


EXISTING CONDITIONS



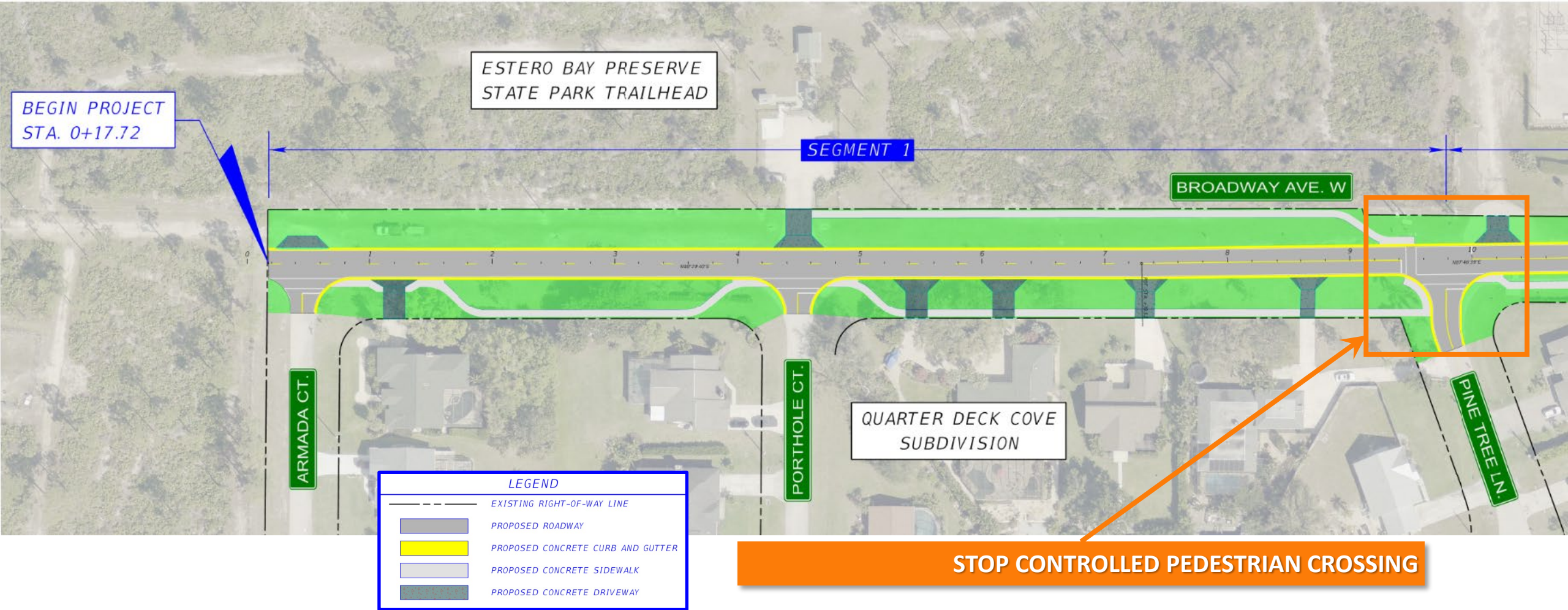
DESIGN ALTERNATIVES

Seg. No	Alternative 1	Alternative 2
1	Urban (11' travel lanes w/ curb & gutter)	Rural (11' travel lanes w/ 6' unpaved shoulder)
2	Urban (11' travel lanes w/ curb & gutter)	Urban (11' travel lanes w/ curb & gutter)
3	Urban (11' travel lanes w/ curb & gutter)	Rural (11' travel lanes w/ 6' unpaved shoulder)
4	Add Sidewalk only (exist. Urban)	Add Sidewalk only (exist. Urban)



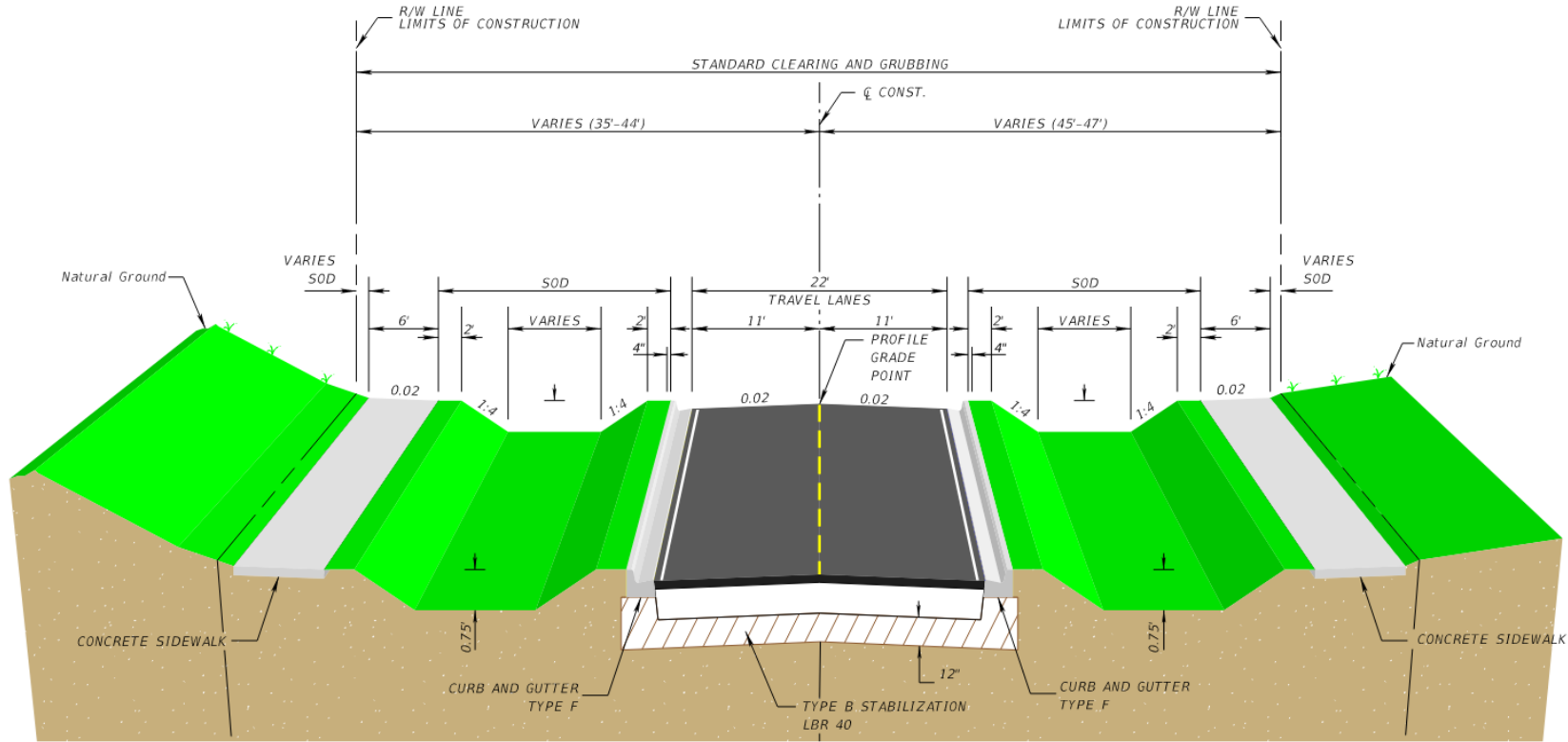
DESIGN ALTERNATIVES

SEGMENT 1 - URBAN



DESIGN ALTERNATIVES

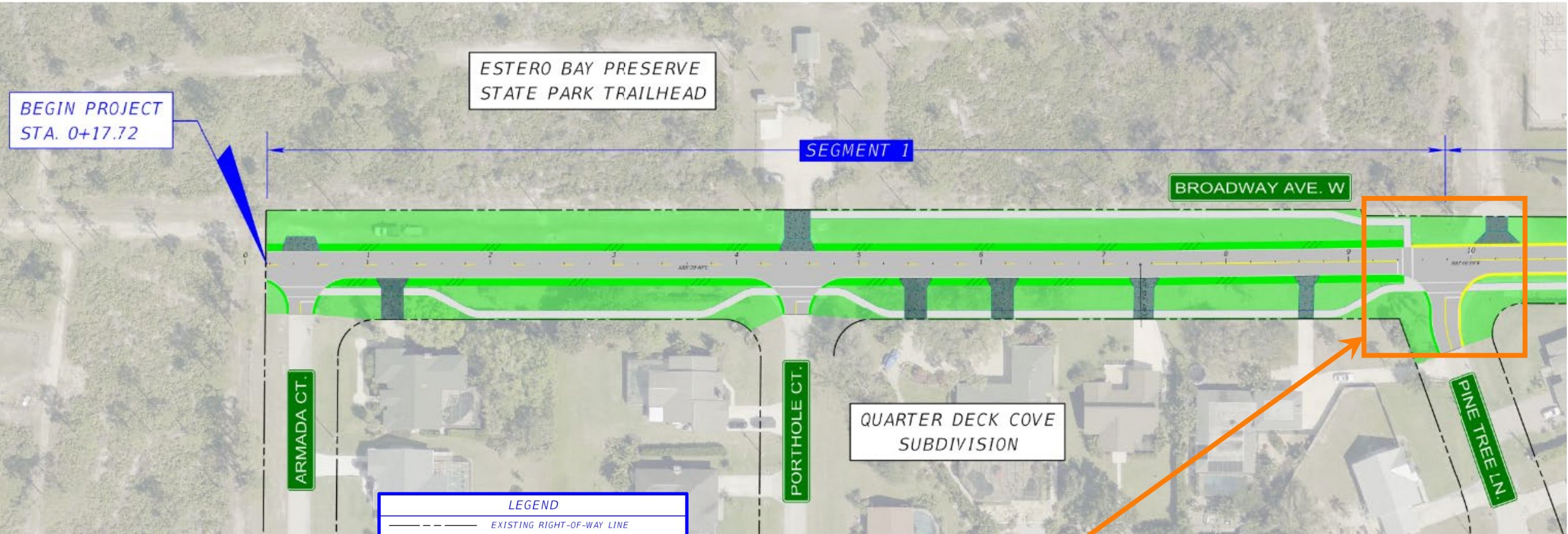
SEGMENT 1 - URBAN








PROPOSED SEGMENT NO. 1 ALTERNATIVE 1
TYPICAL SECTION
BROADWAY AVE. WEST
ARMADA CT. TO PINE TREE LN.
STA. 0+17.72 TO STA. 10+00.00±

DESIGN ALTERNATIVES

SEGMENT 1 - RURAL

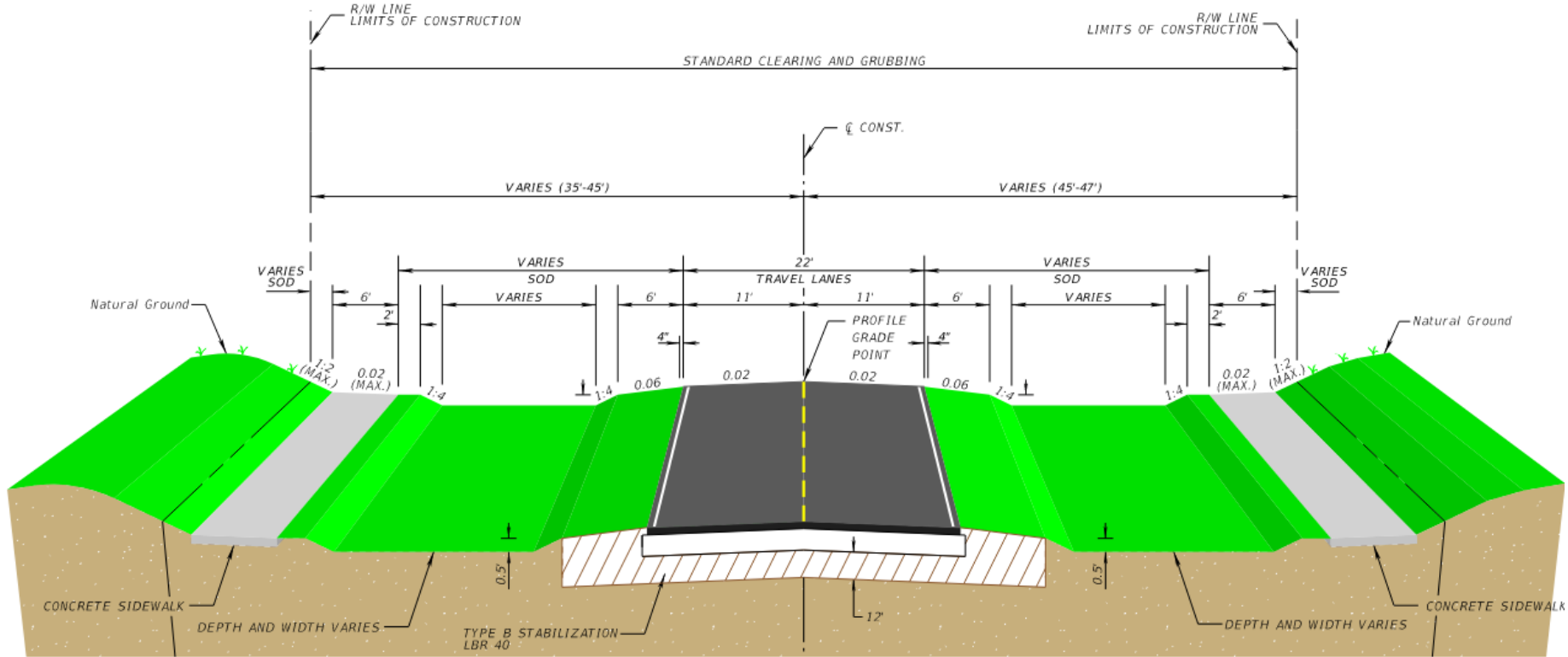


LEGEND	
	EXISTING RIGHT-OF-WAY LINE
	PROPOSED ROADWAY
	PROPOSED CONCRETE CURB AND GUTTER
	PROPOSED CONCRETE SIDEWALK
	PROPOSED CONCRETE DRIVEWAY

STOP CONTROLLED PEDESTRIAN CROSSING

DESIGN ALTERNATIVES

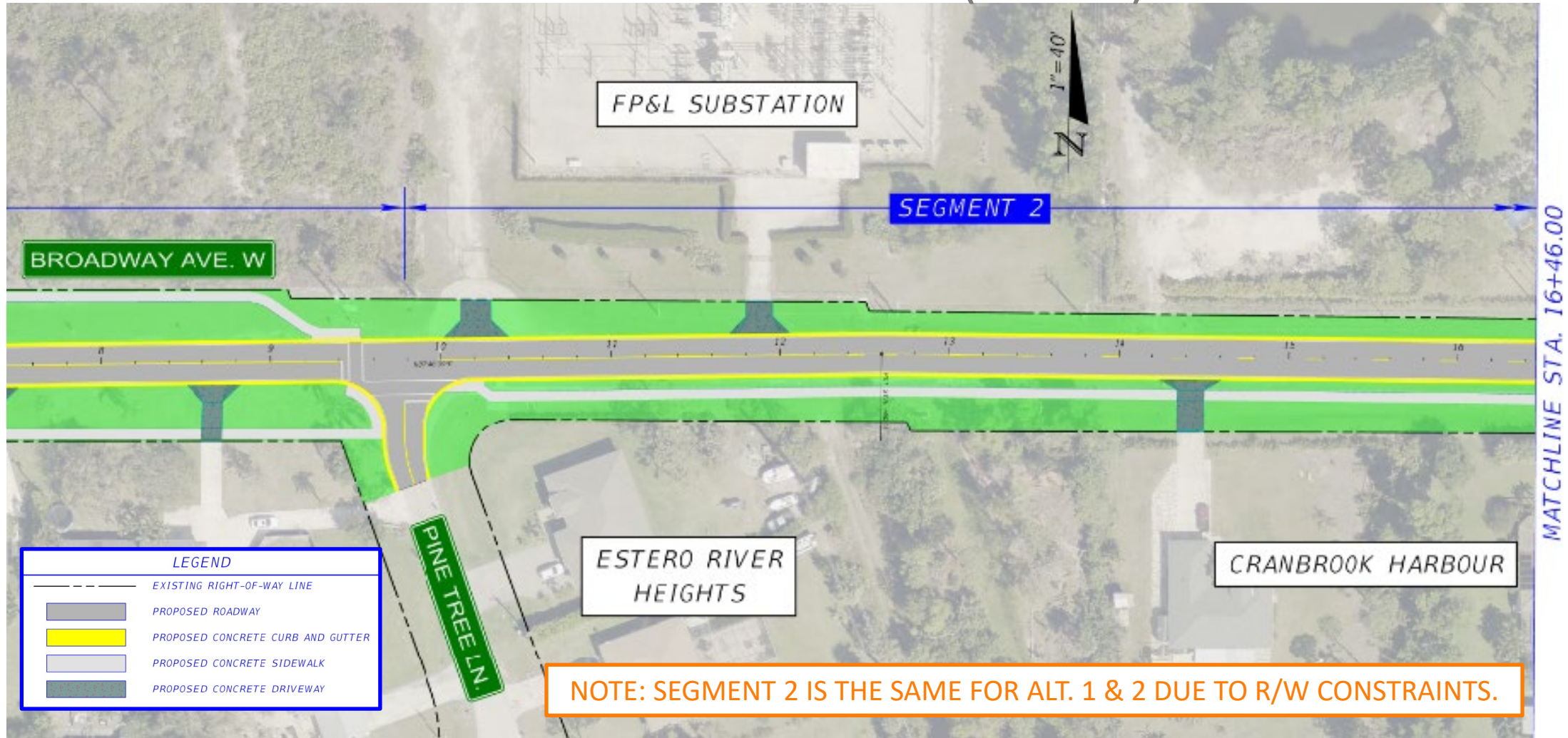
SEGMENT 1 - RURAL



SEGMENT NO. 1 ALTERNATIVE 2
 PROPOSED TYPICAL SECTION
 BROADWAY AVE. WEST
 ARMADA CT. TO PINE TREE LN.
 STA. 0+17.72 TO STA. 10+00.00±

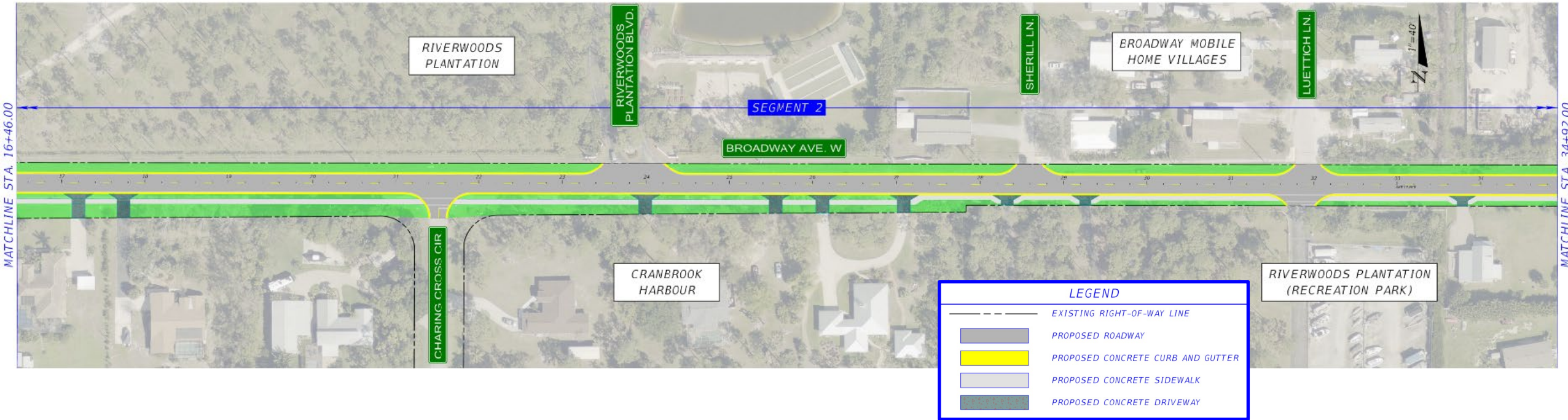
DESIGN ALTERNATIVES

SEGMENT 2 – URBAN (1 OF 3)



DESIGN ALTERNATIVES

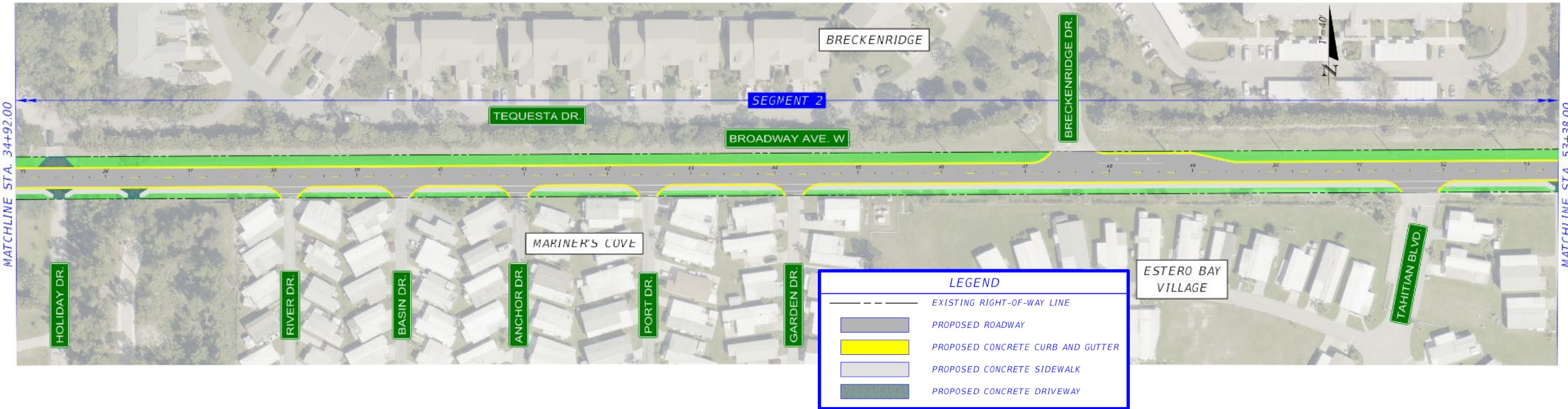
SEGMENT 2 - URBAN (2 OF 3)



NOTE: SEGMENT 2 IS THE SAME FOR ALT. 1 & 2 DUE TO R/W CONSTRAINTS.

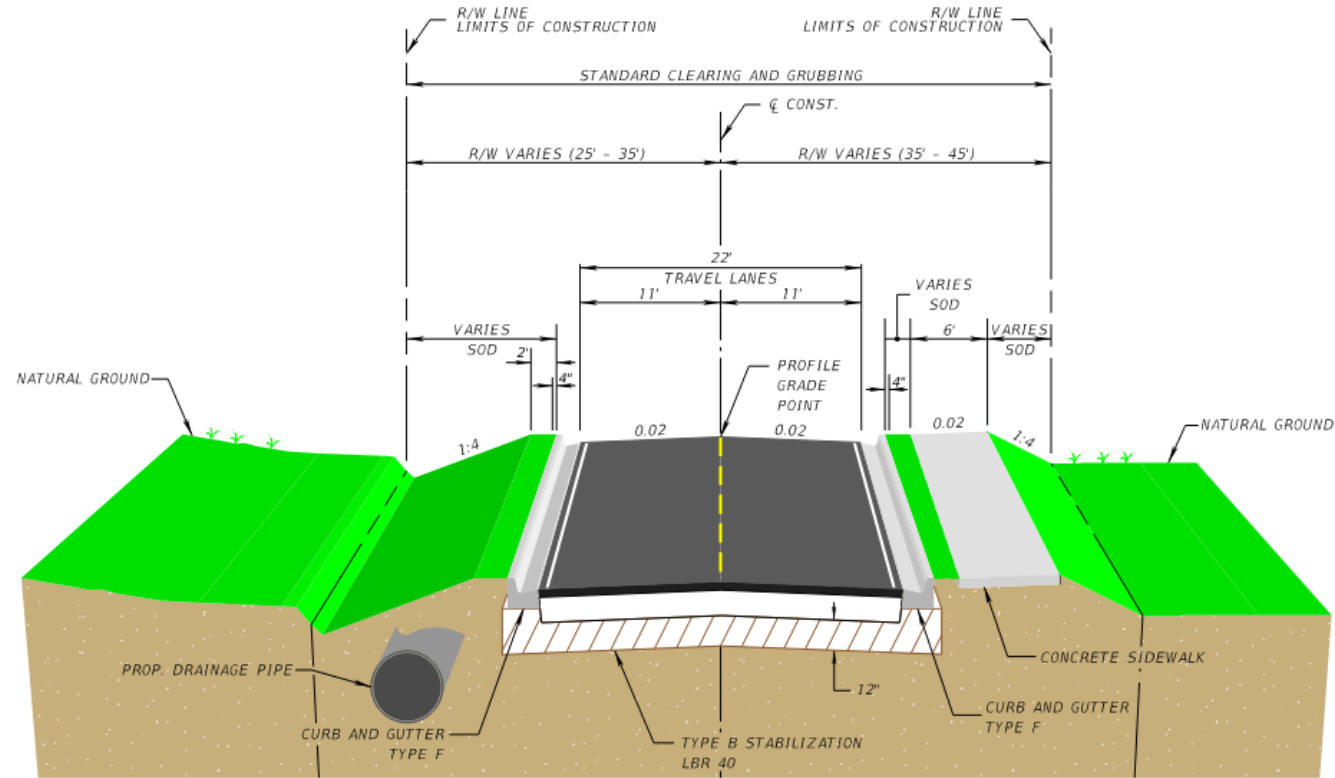
DESIGN ALTERNATIVES

SEGMENT 2 - URBAN (3 OF 3)



NOTE: SEGMENT 2 IS THE SAME FOR ALT. 1 & 2 DUE TO R/W CONSTRAINTS.

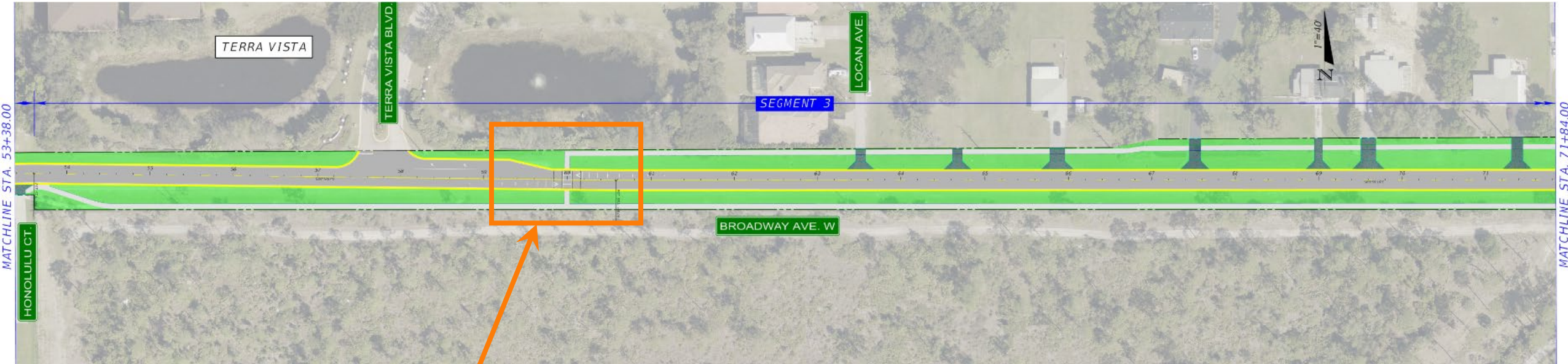
SEGMENT 2 - URBAN





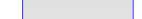

SEGMENT NO. 2 ALTERNATIVE 1 & 2 - OPTION NO. 1
 PROPOSED TYPICAL SECTION
 BROADWAY AVE. WEST
 PINE TREE LN. TO ±190' EAST OF TAHITIAN BLVD.
 STA. 10+00.00 TO STA. 53+60.91

DESIGN ALTERNATIVES

SEGMENT 3 - URBAN (1 OF 2)

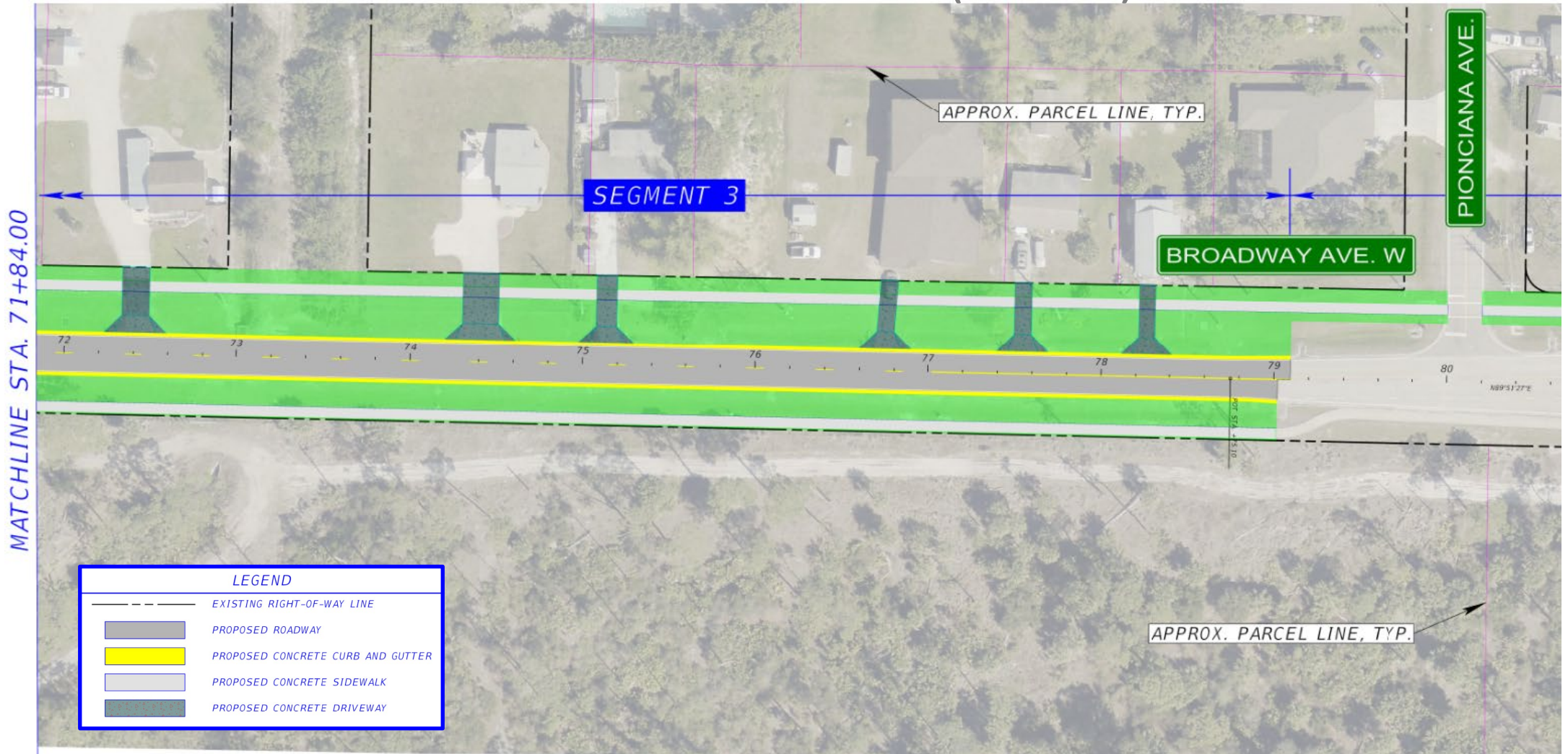


RAISED MID-BLOCK CROSSING

LEGEND	
	EXISTING RIGHT-OF-WAY LINE
	PROPOSED CONCRETE CURB AND GUTTER
	PROPOSED CONCRETE SIDEWALK
	PROPOSED CONCRETE DRIVEWAY

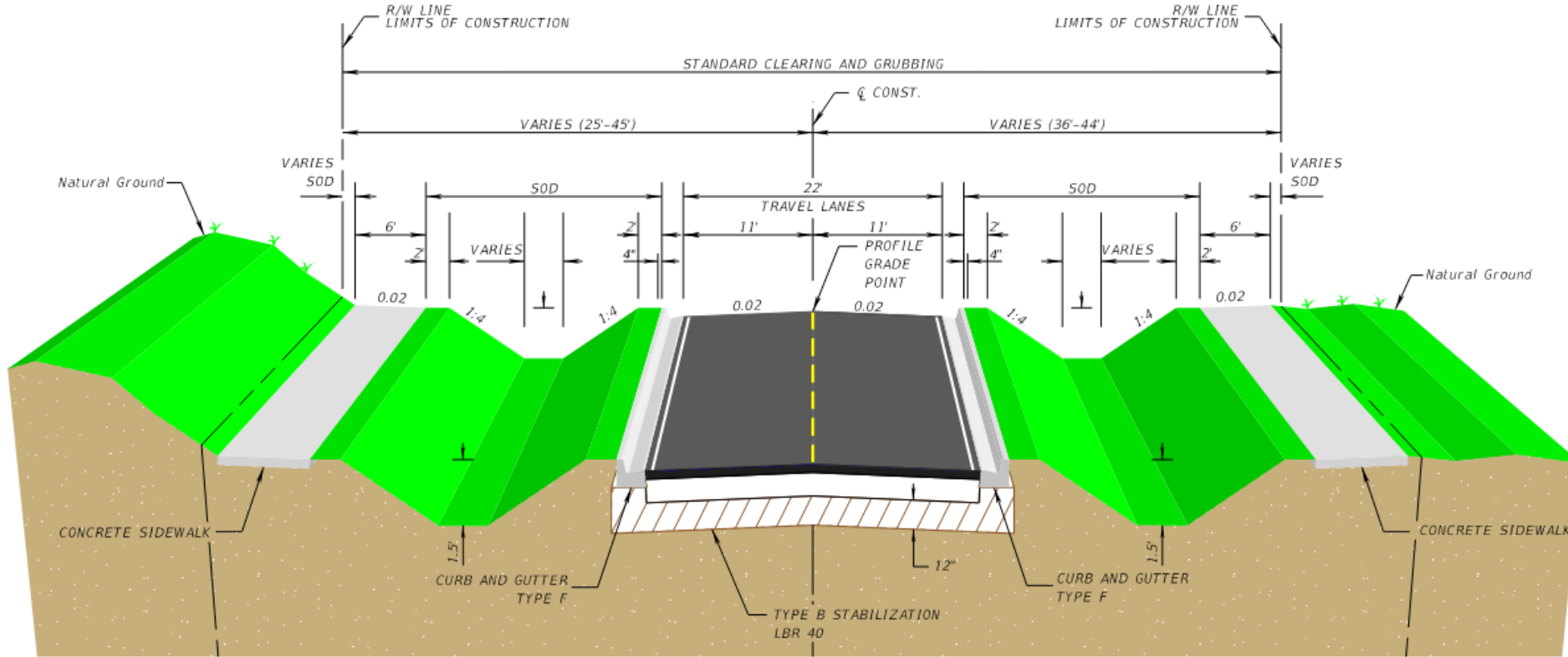
DESIGN ALTERNATIVES

SEGMENT 3 - URBAN (2 OF 2)



DESIGN ALTERNATIVES

SEGMENT 3 - URBAN



SEGMENT NO. 3 ALTERNATIVE 1

PROPOSED TYPICAL SECTION

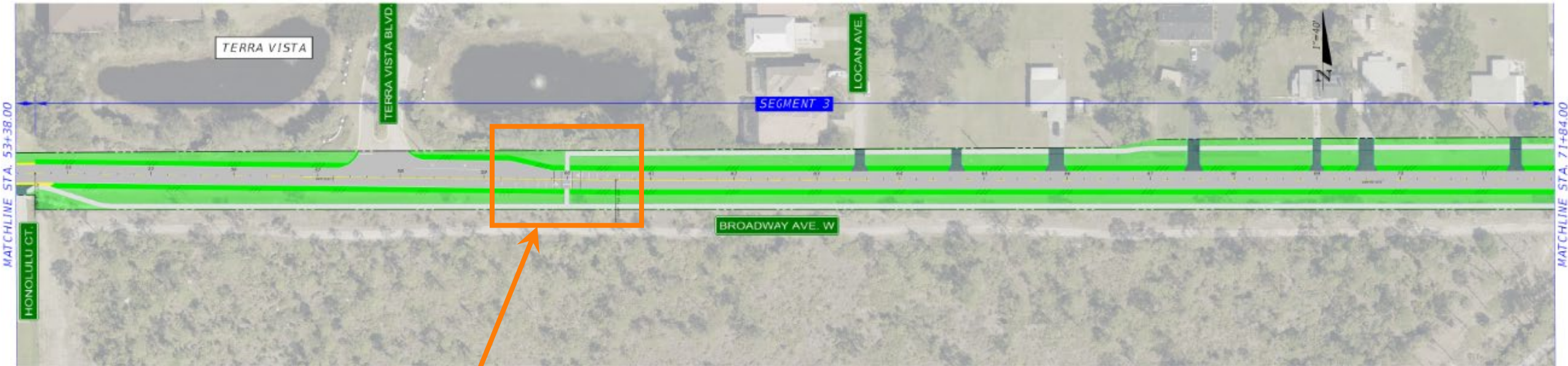
BROADWAY AVE. WEST

±190' EAST OF TAHITIAN BLVD. TO ±110' WEST OF POINCIANA AVE.






STA. 53+60.91 TO STA. 79+00.00±

DESIGN ALTERNATIVES

SEGMENT 3 – RURAL (1 OF 2)

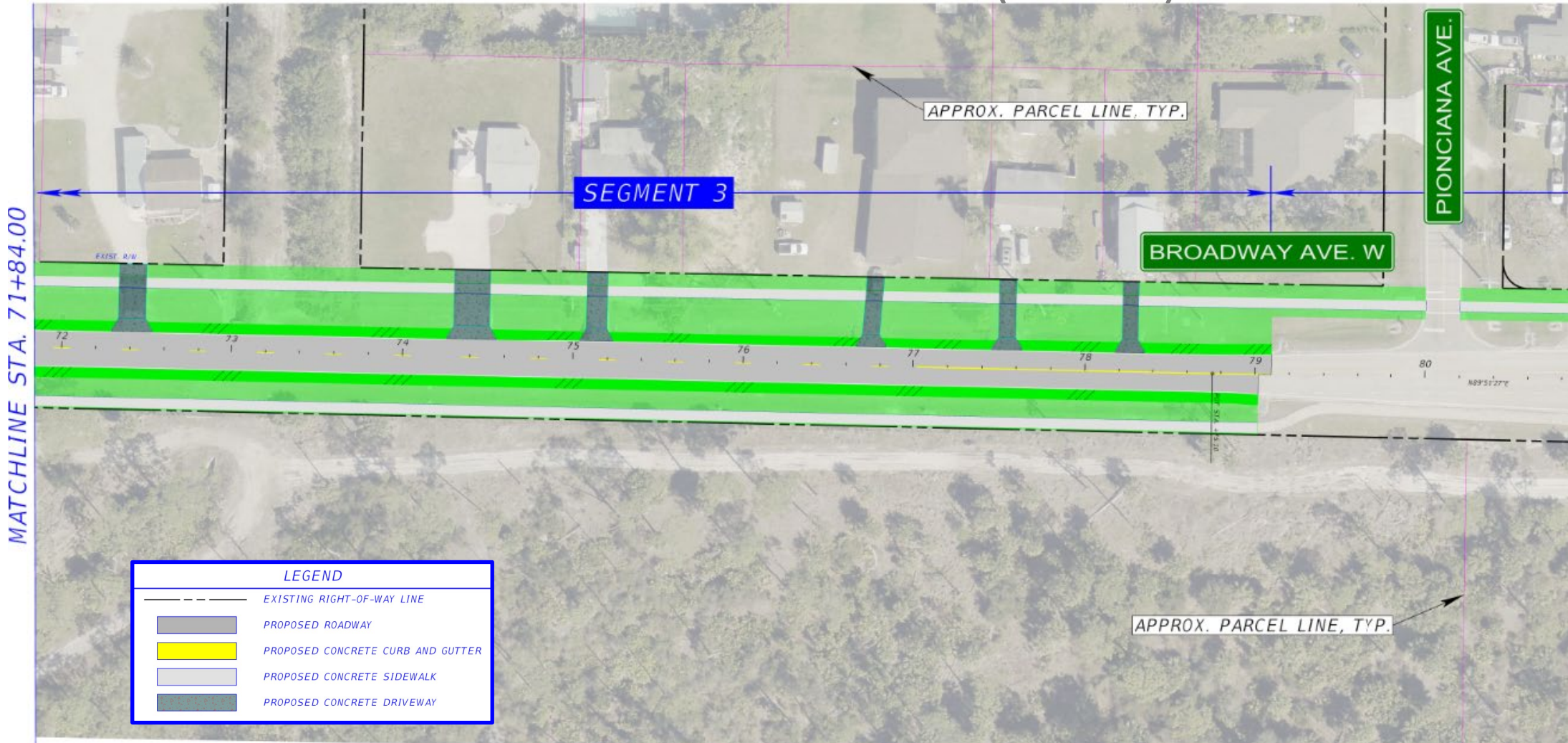


RAISED MID-BLOCK CROSSING

LEGEND	
	EXISTING RIGHT-OF-WAY LINE
	PROPOSED ROADWAY
	PROPOSED CONCRETE CURB AND GUTTER
	PROPOSED CONCRETE SIDEWALK
	PROPOSED CONCRETE DRIVEWAY

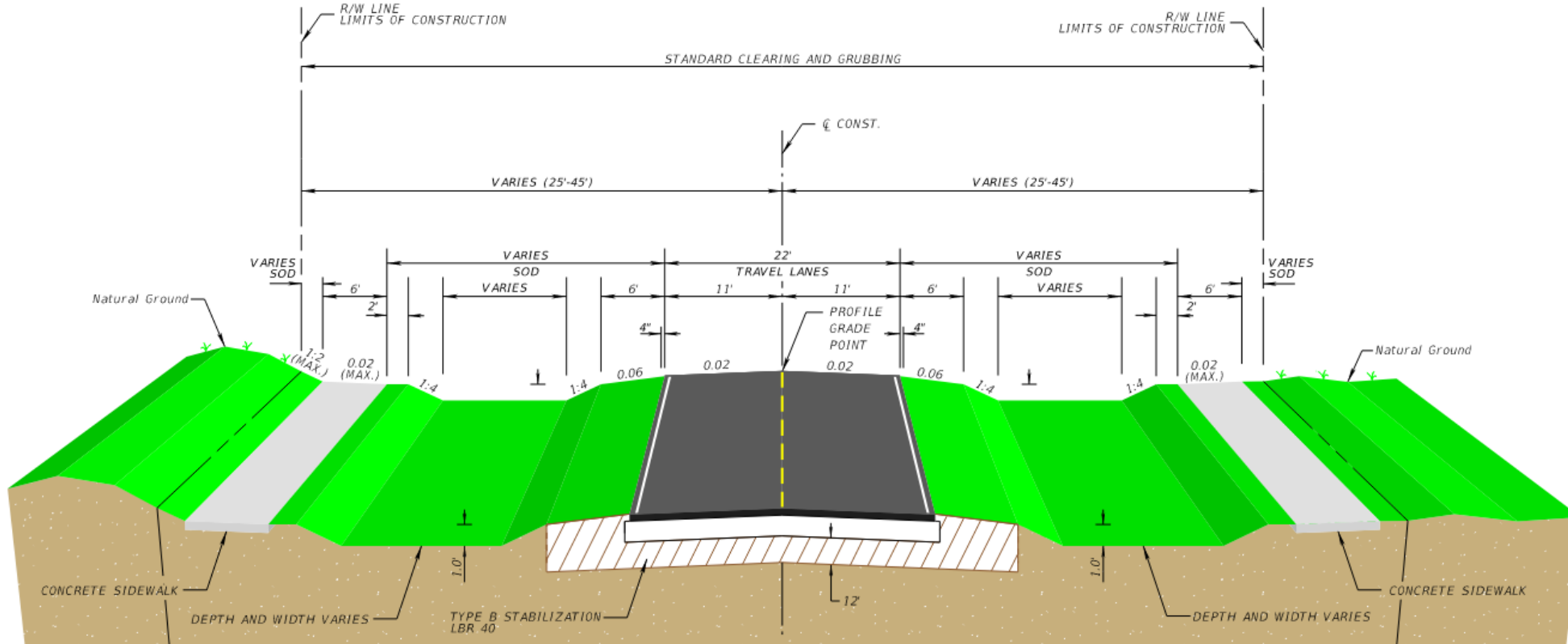
DESIGN ALTERNATIVES

SEGMENT 3 – RURAL (2 OF 2)



DESIGN ALTERNATIVES

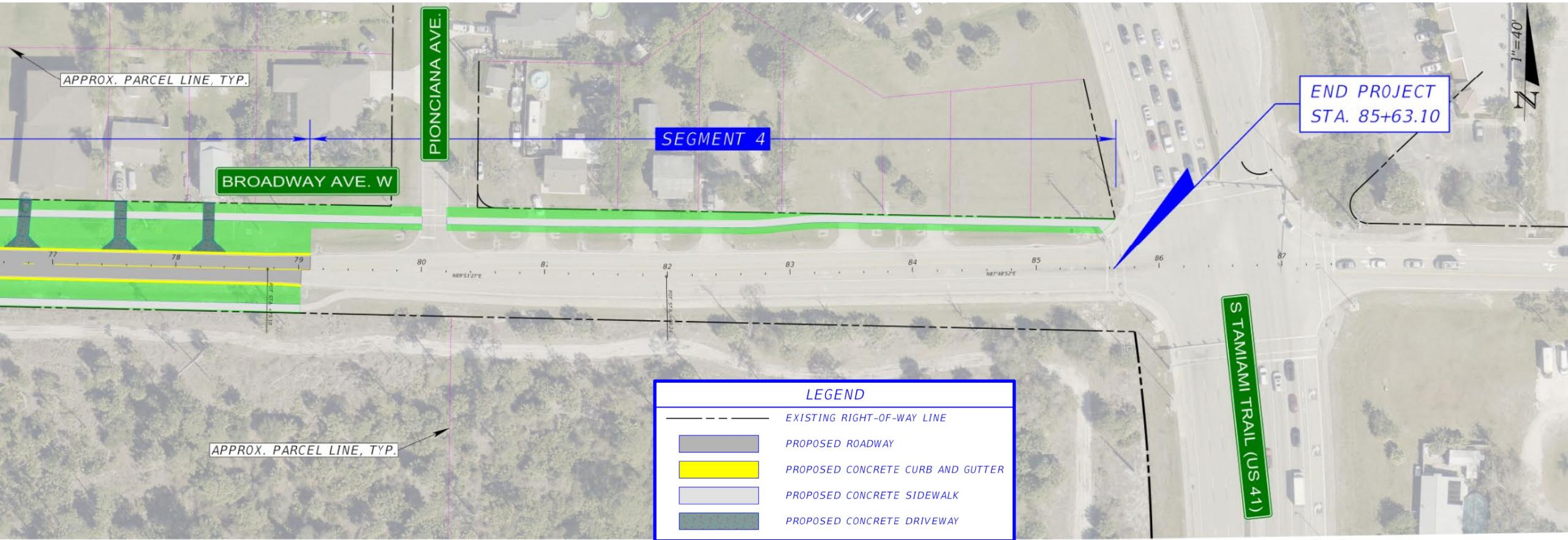
SEGMENT 3 - RURAL



SEGMENT NO. 3 ALTERNATIVE 2
 PROPOSED TYPICAL SECTION
 BROADWAY AVE. WEST
 ±190' EAST OF TAHITIAN BLVD. TO ±110' WEST OF POINCIANA AVE.
 STA. 53+60.91 TO STA. 79+00.00±

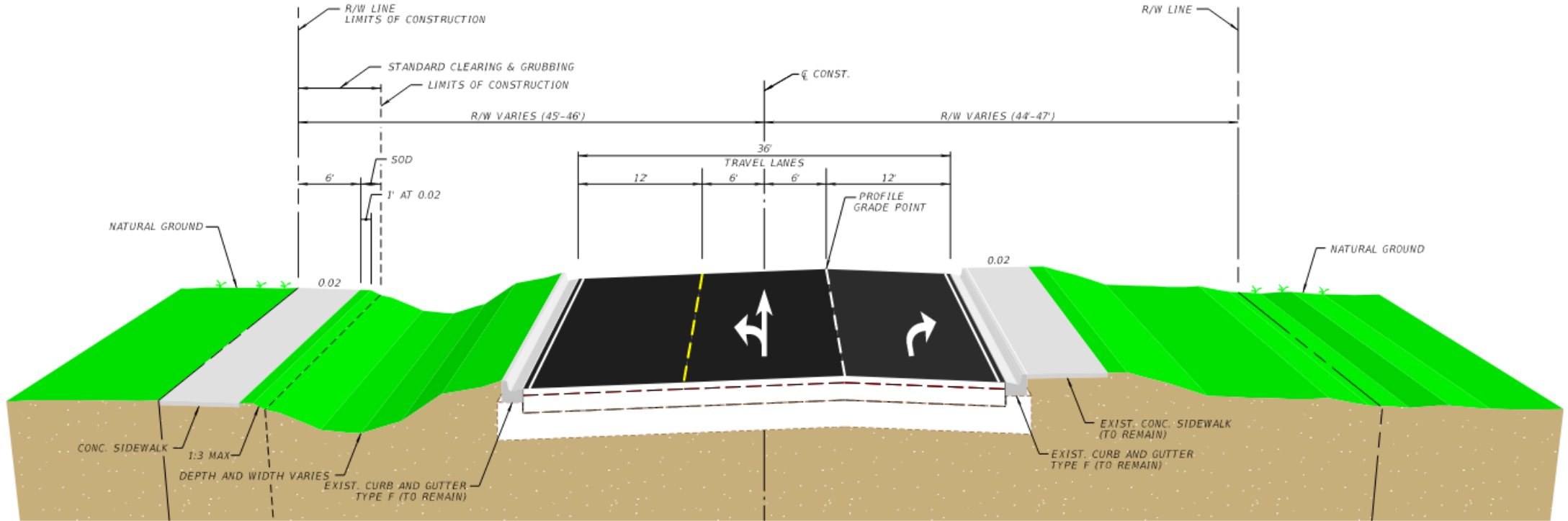
DESIGN ALTERNATIVES

SEGMENT 4 - URBAN



NOTE: SEGMENT 4 IS THE SAME FOR ALT. 1 & 2 (PROP. S/W ONLY).

SEGMENT 4 - URBAN

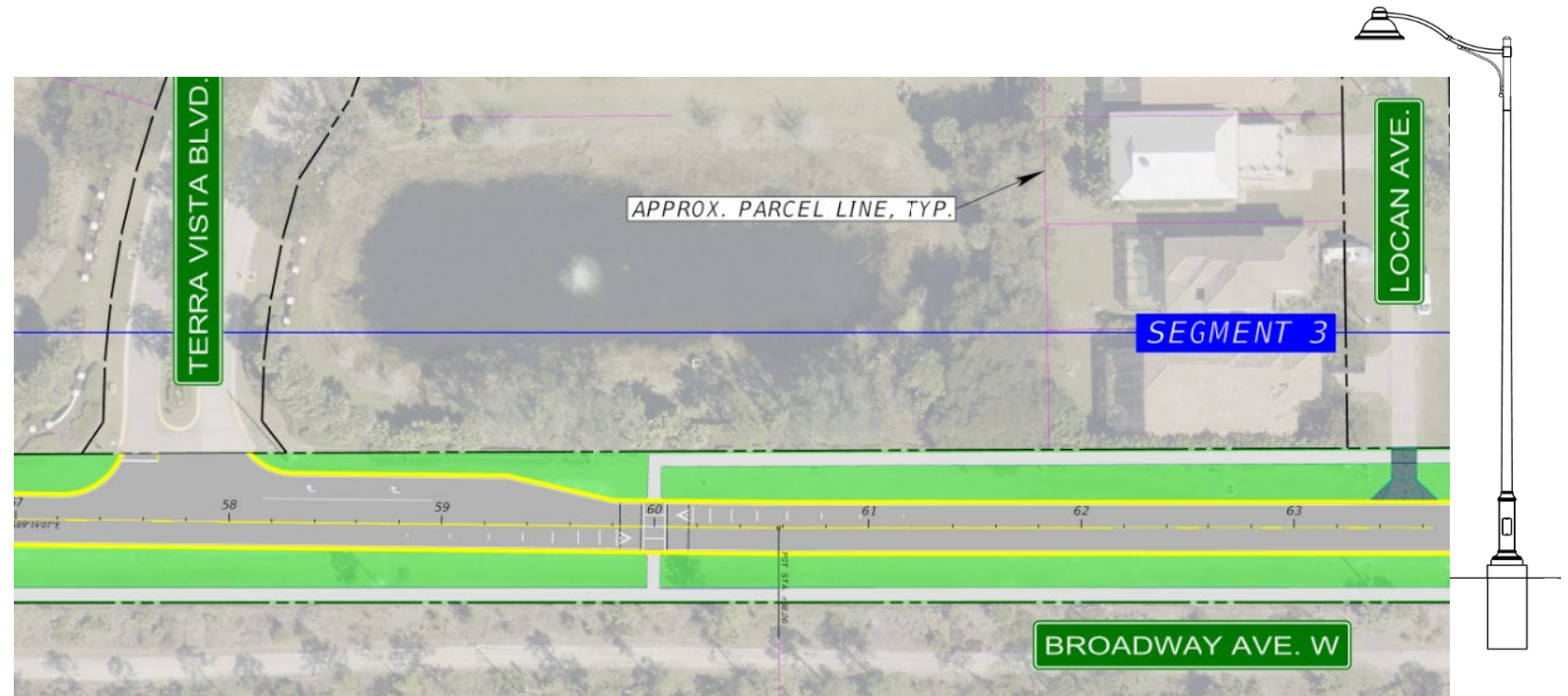


SEGMENT NO. 4 ALTERNATIVE 1
 PROPOSED TYPICAL SECTION
 BROADWAY AVE. WEST
 ±10' WEST OF POINCIANA AVE. TO US 41
 STA. 79+00.00± TO STA. 85+62.77

Lighting Option	Urban	Rural / Urban
Mid-Block Decorative Lighting Only	\$14.1M±	\$12.5M±
Full Corridor Decorative Lighting	\$18.9M±	\$17.2M±

Estimate Considers:

- Roadway
- Drainage
- Signing & Pavement Markings
- Decorative Lighting
- Landscape
- CEI (10% of construction)



- Kick-off Newsletter
- Project Website
 - www.broadwayavewest.com
- Public Meeting
 - March 3, 2026
 - Estero Recreation Center
 - 29 Attendees
 - 11 Comments Received
 - Locate sidewalk closer to roadway or only on north side (Quarterdeck Cove)
 - Preservation of mature trees (Quarterdeck Cove)
 - Install culverts instead of ditches
 - No curb where tortoises are present
 - Overall supportive of infrastructure improvements with exception of the above



RECOMMENDATIONS

Evaluation Criteria	Urban	Rural / Urban
Safety	Better	Good
Estimated Construction Cost	Higher	Lower
	\$14.1M± (Mid-Blk Lighting) \$18.9M± (Corridor Lighting)	\$12.5M± (Mid-Blk Lighting) \$17.2M± (Corridor Lighting)
Pedestrian Accommodations	Medium	Medium
Environmental Factors / Regulatory Permitting Requirements	Low Risk	Low Risk
Right-of-Way Impacts	Medium Risk	Medium Risk

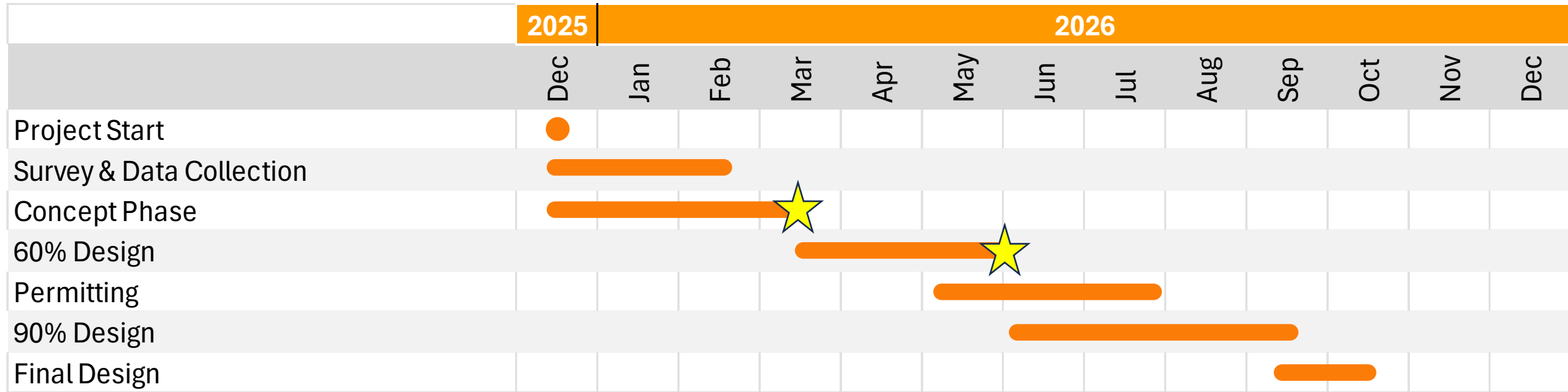
RECOMMENDATION:

- Rural Section within Segment 1
- Urban Section within Segment 2
- Urban Section within Segment 3 (if budget allows, otherwise Rural)
 - Urban Section within Segment 4 (existing)





PROJECT SCHEDULE



★ Village Council Meeting

QUESTIONS?

