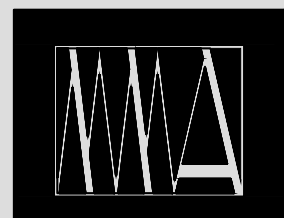


FALMOUTH DENTISTRY

- addition
- building revisions

78 leighton road
falmouth maine

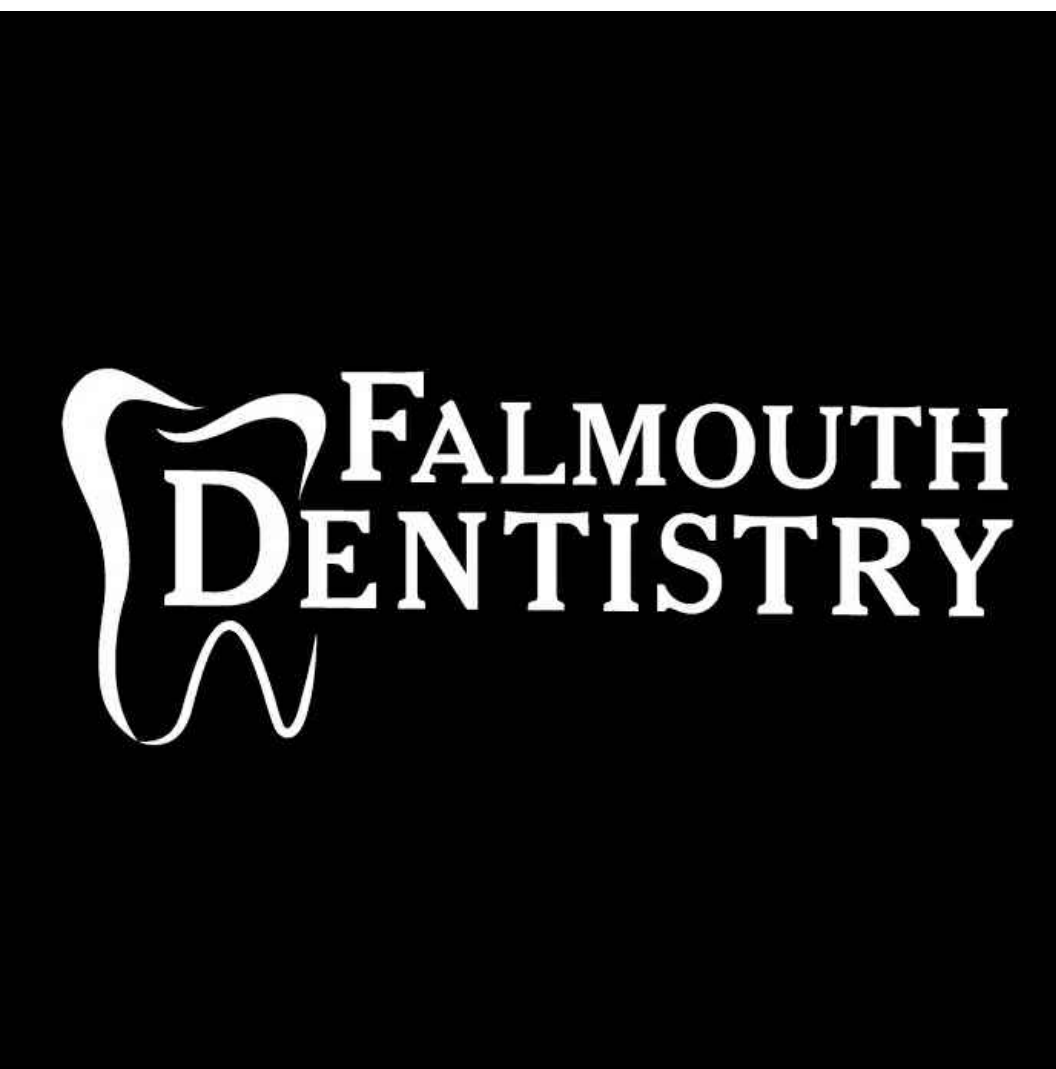
MAY 6, 2026



MARK
MUELLER
ARCHITECTS
100 COMMERCIAL STREET
SUITE 205
PORTLAND MAINE
04101
207.774.9057

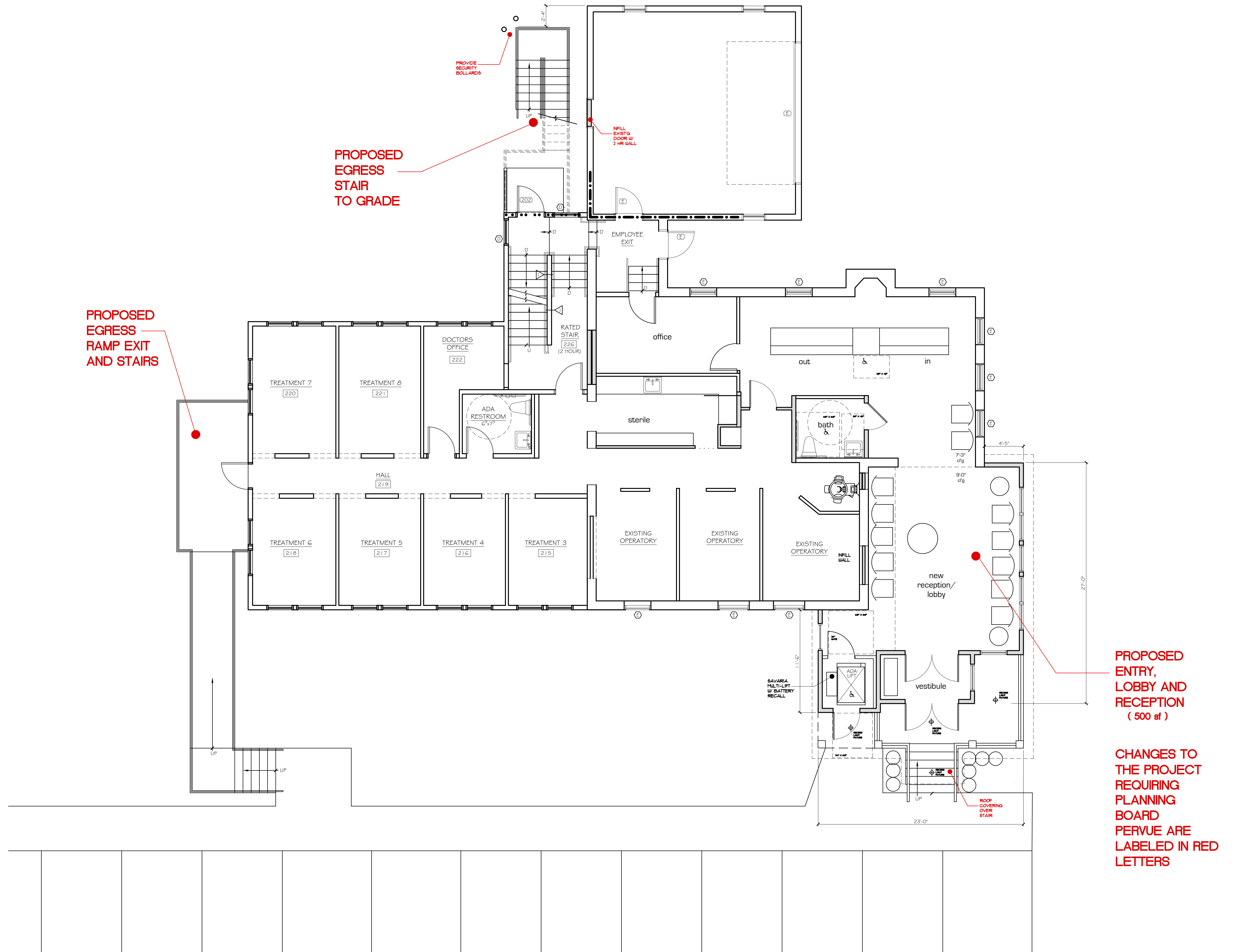
amended site plan review

MAP 373
LOT U44-014



MARK MUELLER ARCHITECTS

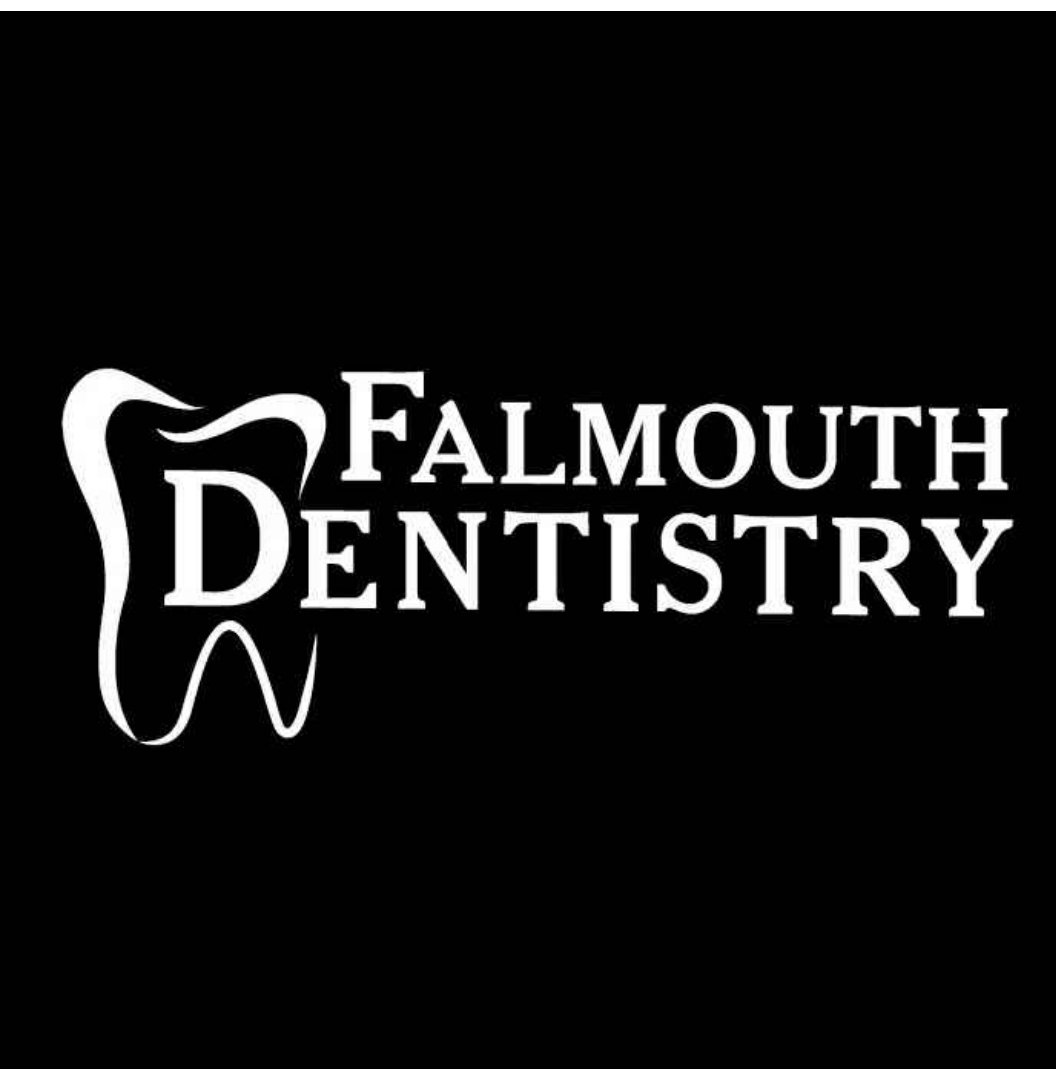
100 Commercial Street
Suite 205
Portland, Maine 04101
Phone: 207.774.9057
Email: rfi@muellerarchitects.com



FIRST FLOOR PLAN
SCALE: 3/16" = 1'-0"

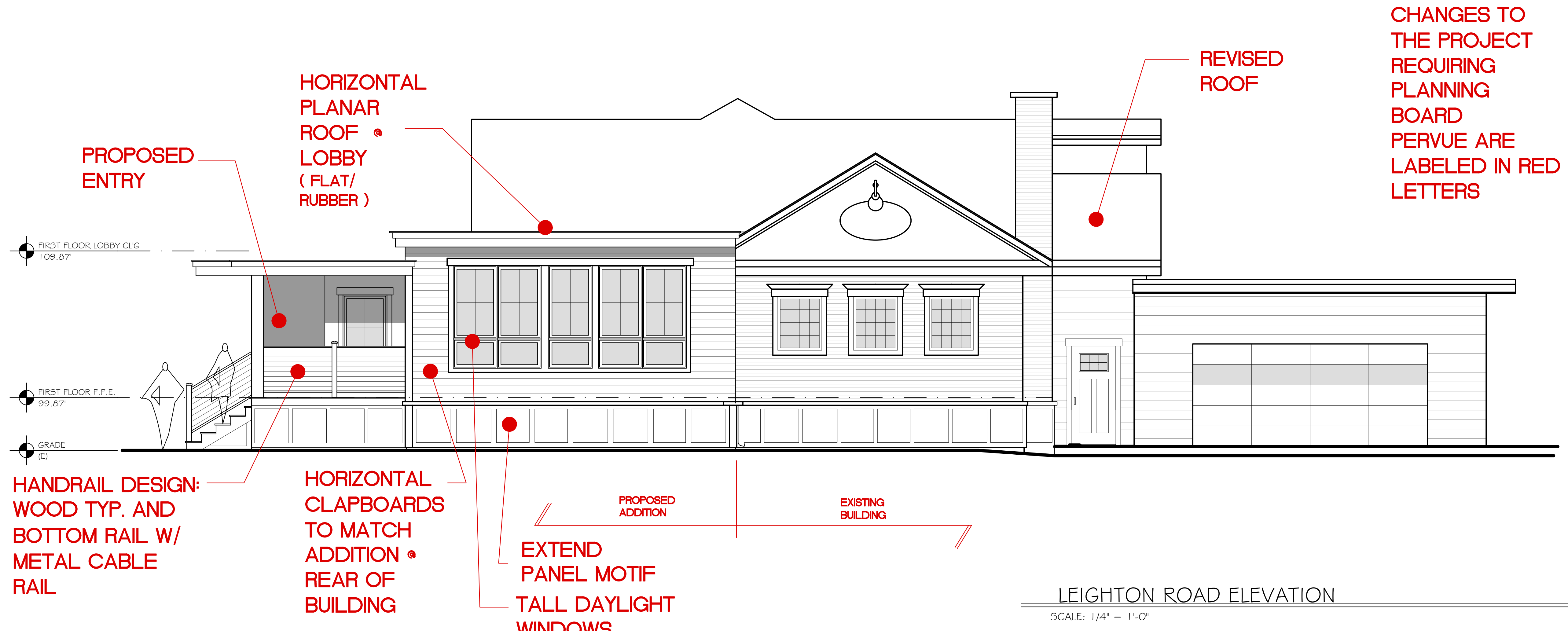


A-1.0
5.6.26

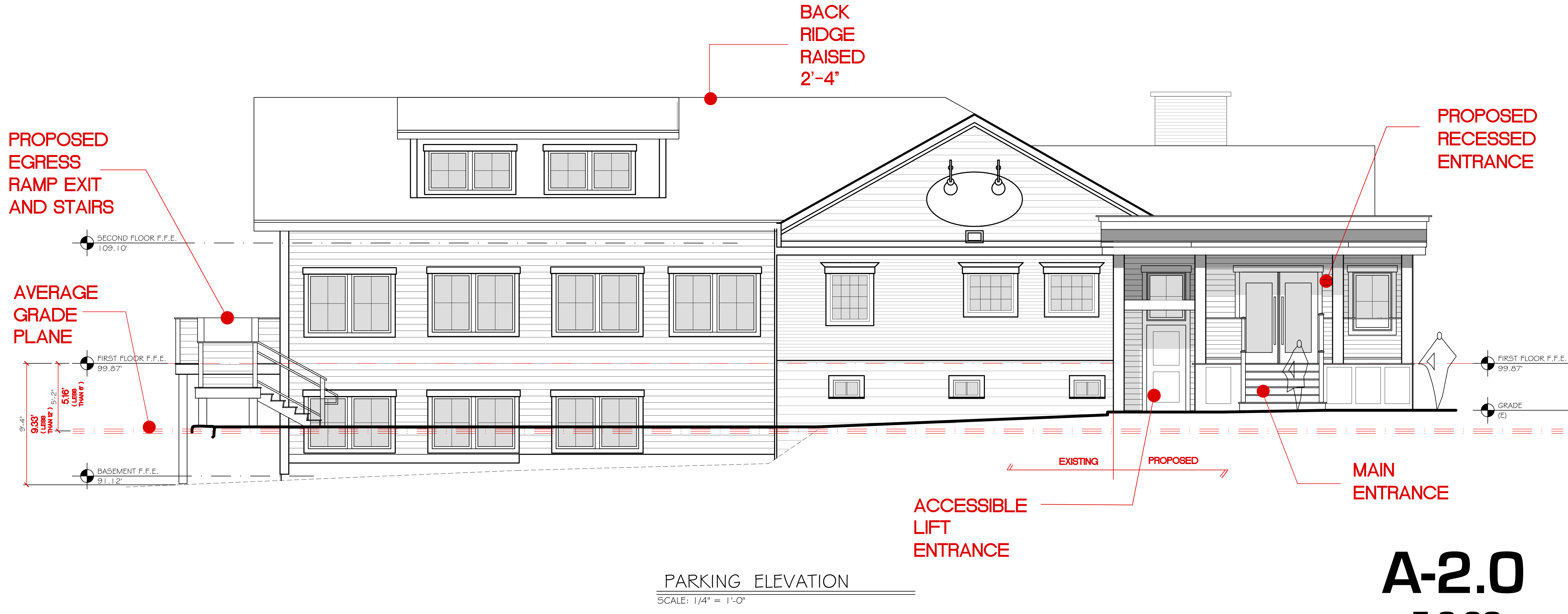


MARK MUELLER ARCHITECTS

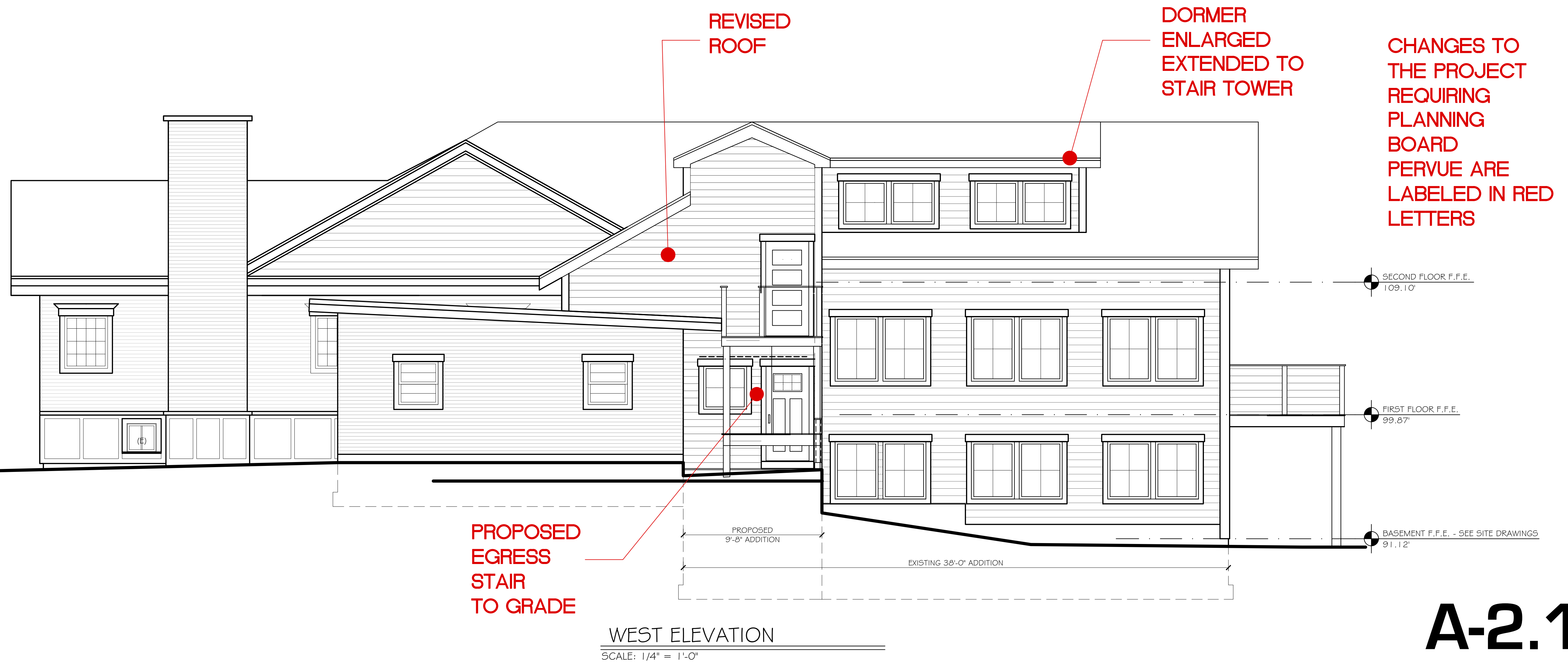
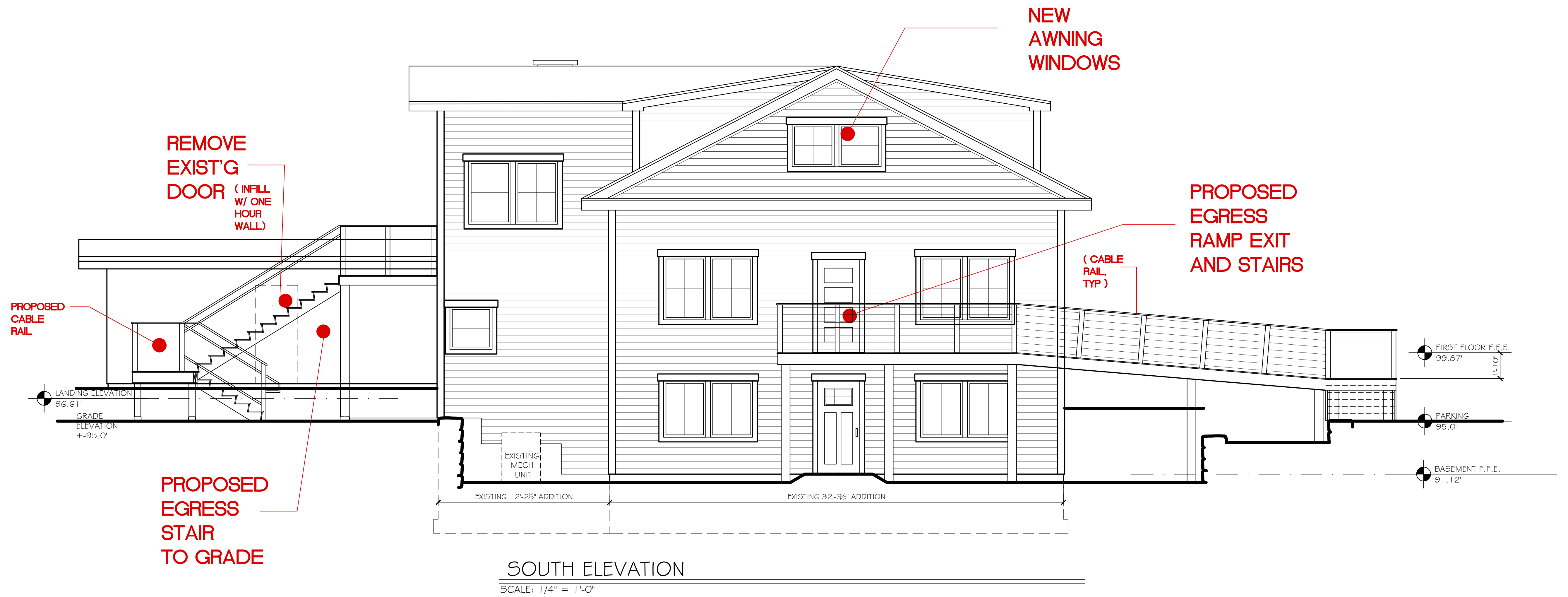
100 Commercial Street
Suite 205
Portland, Maine 04101
Phone: 207.774.9057
Email: rfi@muellerarchitects.com



CHANGES TO THE PROJECT REQUIRING PLANNING BOARD PERVUE ARE LABELED IN RED LETTERS



A-2.0
5.6.26



**MARK
MUELLER
ARCHITECTS**

100 Commercial Street
Suite 205
Portland, Maine 04101
Phone: 207.774.9057
Email: rfi@muellerarchitects.com