



Wetland Determination Report

Project Name:	670 S. Old Rand Road	Client:	Advantage Consulting Engineers
Location:	Lake Zurich, Ela Township, Lake County, Illinois 60047		
Parcel PIN #	1420400003		
PLSS	SE S20 T43N R10E		
Coordinates	Latitude: 42.189303 Longitude: -88.083428		
Ecologist:	Lisa Pajon		
Project #	AC2289		
Attachments	Preliminary Water Resource Summary: Exhibit A		

A wetland determination was conducted by Gary R Weber Associates, Inc. (GRWA) to establish the presence and location of any wetlands or other water resources on the above referenced property located on S Old Rand Road and Buesching Road in Lake Zurich; hereafter referred to as the study area.

Our investigation consisted of a review of available water resource maps and publicly available historic aerials to determine if any areas on-site contained wetland signatures or water resources identified on regional mapping (see summary below). This review was initiated during winter conditions and no site visit has been conducted at this time. A follow-up investigation to collect data and stake boundaries will be required for permitting.

One (1) wetland signature was identified within the study area. This report and the attached exhibits do not constitute a full wetland delineation report and is provided for planning purposes only.

Map Review

Prior to the field investigation, a preliminary site evaluation was performed using natural resource mapping. Reviewed maps are summarized below. A preliminary water resource exhibit provides an estimation of wetland boundaries and is included with this report (Exhibit A).

- The National Wetlands Inventory identifies a freshwater, unconsolidated bottom, semi-permanently flooded water body (PUBF) within the study area.
- The Lake County Wetland Inventory identifies wetland within the study area.
- The Soil Map identifies the following soils within the study area (Exhibit D):
 - 1103A Houghton Muck – Hydric soil
 - 531C2 Markham Silt Loam – Predominately non-hydric soil
 - 530D3 Ozaukee Silty Clay Loam – Non-hydric
- The United States Geologic Survey (USGS) Topographic Map identifies a perennial pond within the study area.
- The FEMA Flood Insurance Rate Map identifies the study area outside the 500-year floodplain.
- The **Preliminary Water Resource Summary: Exhibit A** identifies present conditions within the study area. Locations and estimated boundaries of water resources are denoted.



Review Summary:

The project area consists of a single-family home with access drive and accessory structures. The central and northern portions are fully vegetated and contain an open water pond and associated drainageway (Wetland 1).

Two wetlands appear to be located off-site to the north and west. An unnamed tributary is located east of the study area and connects to Wetland 1 via the drainageway.

The pond and drainageway are identified on the Lake County Wetland Inventory. The pond is also identified on the USGS Topographic map and the National Wetland Inventory.

A review of publicly available historic aerials shows the drainageway and pond were present before local development which occurred circa 1962.

Conclusions:

One (1) wetland with an associated drainageway was determined to be located within the study area. The wetland may connect off-site with an unnamed tributary that is associated with Buffalo Creek.

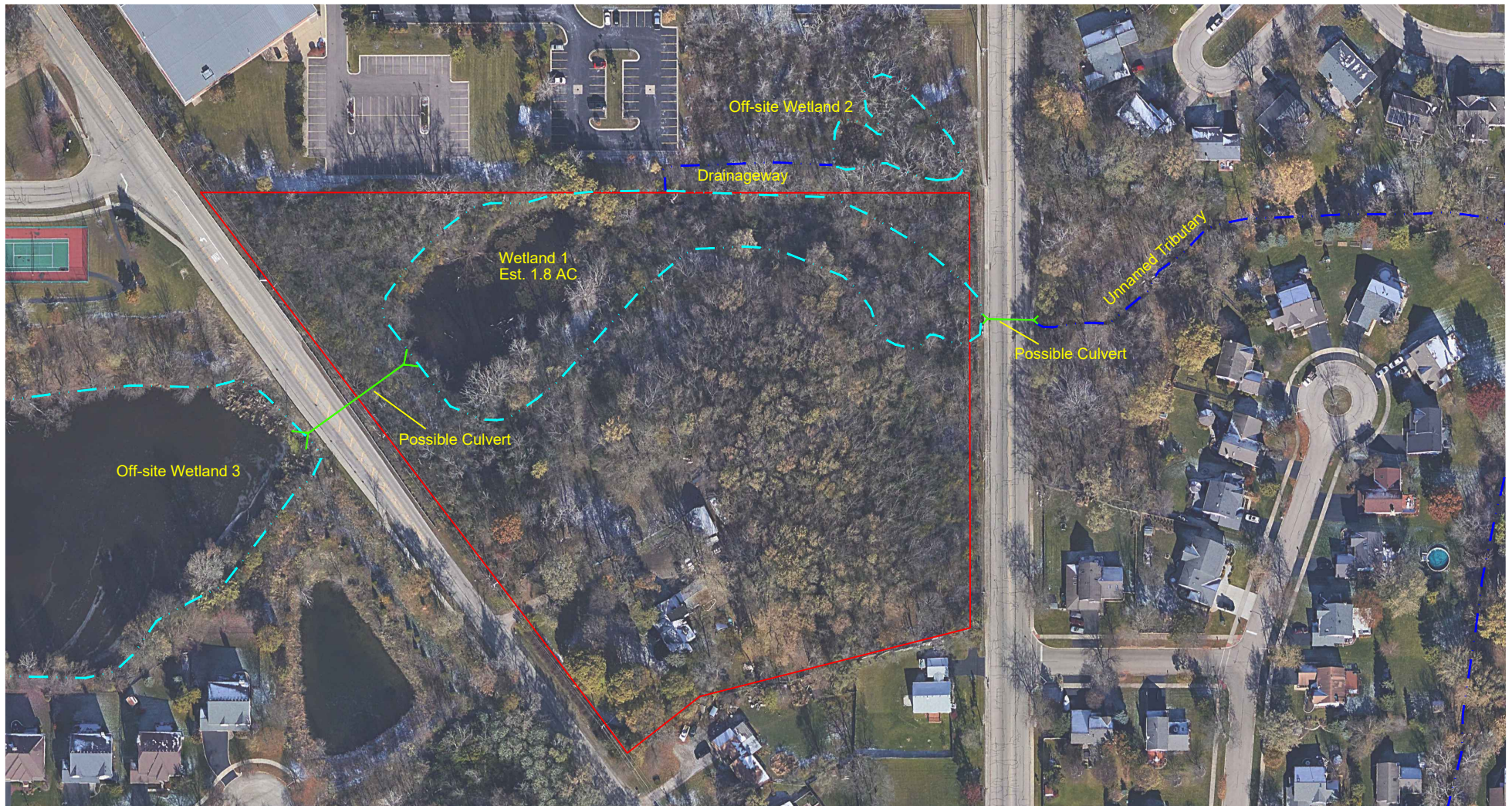
Wetlands in Lake Zurich are regulated under the Lake County Watershed Development Ordinance and may require a minimum buffer width of 50-ft.

This determination was done outside of the growing season using mapping resources and historic aerials. This report is to be used for planning purposes. Due to potential connectivity to Buffalo Creek, Wetland 1 will be under the jurisdiction of the U.S. Army Corps of Engineers.

Regulatory Summary:

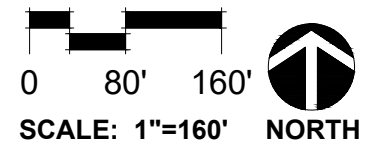
The U.S. Army Corps of Engineers has the final authority in determining the jurisdictional status of the wetlands identified on site. GRWA recommends that a request for jurisdictional determination be sent to the U.S. Army Corps of Engineers as soon as possible. Any impacts to jurisdictional wetland, Waters of the U.S., or associated buffers will require U.S. Army Corps of Engineers notification.

The Village of Lake Zurich Stormwater Management Ordinance regulates the development of all areas within the Village. A Watershed Development Permit is required for the development of any site which impacts water resources.



LEGEND

- Study Area —
- Estimated Wetland Boundaries - - -
- Estimated Non-wetland Waters Boundaries - - -



Provided by: Google Earth - 2018 Aerial Image



GARY R. WEBER
ASSOCIATES, INC.

670 S. Old Rand Road
Lake Zurich, Lake County, Illinois 60047

AC2289
Advantage Consulting Engineers

PRELIMINARY WATER
RESOURCES SUMMARY

EXHIBIT A