

Hybrid Learning

Smart Restart Update | Planning for K-5, Middle & High School



Key Takeaways:

1. Waiting on COVID testing results from Health District.
2. Transition to hybrid will happen sometime after parent-teacher conferences.
3. We will provide a two week window for communication and transition to hybrid.

COVID-19 Testing Update

Conducting prevalence testing
October 6-16

- Community wide testing
- K-2 testing
- Staff testing

**COVID Testing Results are Currently
Pending.**

Considerations

Look, Listen and Learn:

We have been looking at models, learning from others, and listening to our staff on the academics, safety and logistics.

Go slow, to go fast:

Things continue to fluctuate and evolve from guidance to what we learn from others.

Our district has a unique set of students/families, staff, facilities, resources and geography. It is difficult to compare ourselves to other districts.

Considerations

- COVID Rates
- Academics
- Transportation
- Meals
- Health and Safety
- Cohorting
- Daycare



Transition to Hybrid

Depending on the prevalent rates, and if we receive approval from the Chelan-Douglas Health District we plan to transition the following levels first.

Kindergarten - 2nd grade

As rates continue to stabilize we plan to return grades 3-5 to classrooms incrementally.



Academics

Daily in-person instruction for PreK-2

- Youngest learners need a foundation in literacy and numeracy
- Students have difficulty maintaining focus online all day
- Continue skill building and supporting using instructional technology for learning activities (Laptops/Tablets/Canvas/Google/iReady/Lexia)



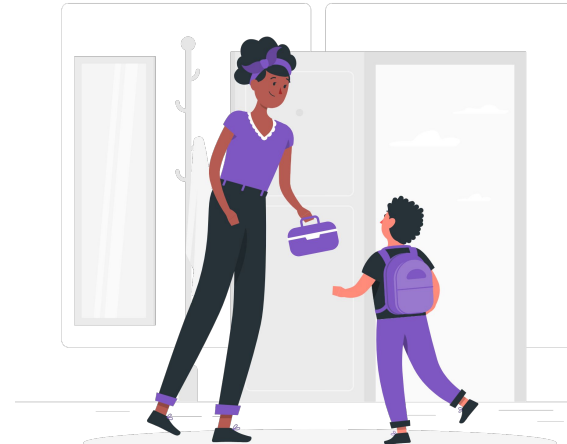
Transportation

- Important operational support for in-person learning
- Worked closely with transportation to work through different hybrid scenarios
- Ensure we have adequate staffing levels
- Working through geographical groupings for mitigation compliance.



Meals

- Nutrition Services will offer two meal programs during hybrid: On-site and drive thru
- Developing plans for making school breakfast/lunch available on-site for hybrid K-2 students transitioning in and out of buildings.
 - Ensuring safety protocols are in place to avoid groups
 - Maintaining safe food handling practices
- Drive-thru meal pick up will continue for grades 5-12 & WIA
- Continue being responsive to needs of students/families



Health & Safety

- Personal Protective Equipment
- Daily Attestation/Symptom screening
- Cleaning and sanitizing
- Traffic flow (in and out of building)
- Masking and face coverings
- Protocol for symptoms at school (Awaiting guidance from CDHD)
- Cold/flu symptoms



These protocols will be communicated through the [Smart Restart Plan](#) with staff, students and parents as we get closer to a start date.

Learning from others

- Weekly regional superintendent calls. Learning from those that are starting to open.
- “Field Trip” to Moses Lake to observe mitigation, traffic flow and daily interaction.
- Continued to look at different hybrid models around the region and country
- Explored variations of the following models to determine what is feasible given our unique staffing, resources and values.
- Working with our union leaders and hearing from our staff about concerns.

HYBRID MODELS

A/B COHORTS (Alternating days in-person and online)

AM/PM COHORTS (Daily online and in-person)

K-2 Hybrid

AM/PM COHORT SCHEDULE - For PreK-2

- Blend of online and daily in-person instruction.
- Students will alternate between in-person and online at home learning daily

PROJECTED START: After Parent Teacher Conferences

This projected start is subject to change and is only viable if the CDHD feels the COVID-19 rates are low and the district has implemented all required health and safety protocols.



K-2 Hybrid Schedule (Tues- Fri)

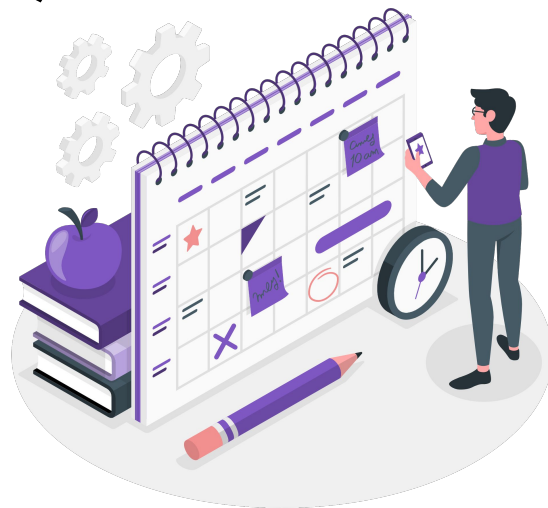
AM COHORT SCHEDULE

AM COHORT @ SCHOOL

7:45-10:15 AM (Breakfast, SEL, ELA, Math & Recess)

AM COHORT @ HOME

Noon - 2:30 PM (Eat Lunch, Lexia, iReady, Specialists, Intervention, Science, Social Studies)



K-2 Hybrid Schedule (Tues- Fri)

PM COHORT SCHEDULE

PM COHORT @ HOME

7:45-10:15 AM (Eat Breakfast, Lexia, iReady, Specialists, Intervention, Science, Social Studies)

PM COHORT @ SCHOOL

Noon - 2:30 PM (Lunch, SEL, ELA, Math & Recess)

K-2 Hybrid Schedule (Late Start Mon.)

AM COHORT @ SCHOOL

9:15 - 11:00 AM (Breakfast, SEL, ELA & Math)

PM COHORT @ HOME

12:45 - 2:30 (Lexia, iReady, Specialists, Intervention, Science, Social Studies)

PM COHORT @ HOME

9:15 - 11:00 AM (Lexia, iReady, Specialists, Intervention, Science, Social Studies)

PM COHORT @ SCHOOL

12:45- 2:30 PM (Lunch, SEL, ELA & Math)

K-2 Communication

- DISTRICT: PreK-12
 - District Smart Restart Update with all grade level updates
 - Letter
 - Website update
 - Social media
- PRESCHOOL, ELEMENTARY SCHOOL: PreK - 2
 - Video
 - Letter
 - Email
 - Remind
 - Conversation during parent teacher conferences



Phasing and Flexibility for Remaining Grades

Grades 3-5

Plan to return grades 3-5 once approved by health district. Based on staffing, hybrid for this group may look different. Staff is continuing to evaluate models for 3-5.

Middle & High School

Middle and High Schools will not be able to transition to an AM/PM hybrid model due transportation limitations.

1. Semester is a natural transition for students moving between WHS and WIA. It allows students to finish the semester and earn their credit before moving to their new school.
2. The A/B hybrid cohorts will require changing many students' schedules. Doing this at semester (when schedules are usually changing anyway) allows a single transition period instead changing once for hybrid and then changing again at semester.

Questions